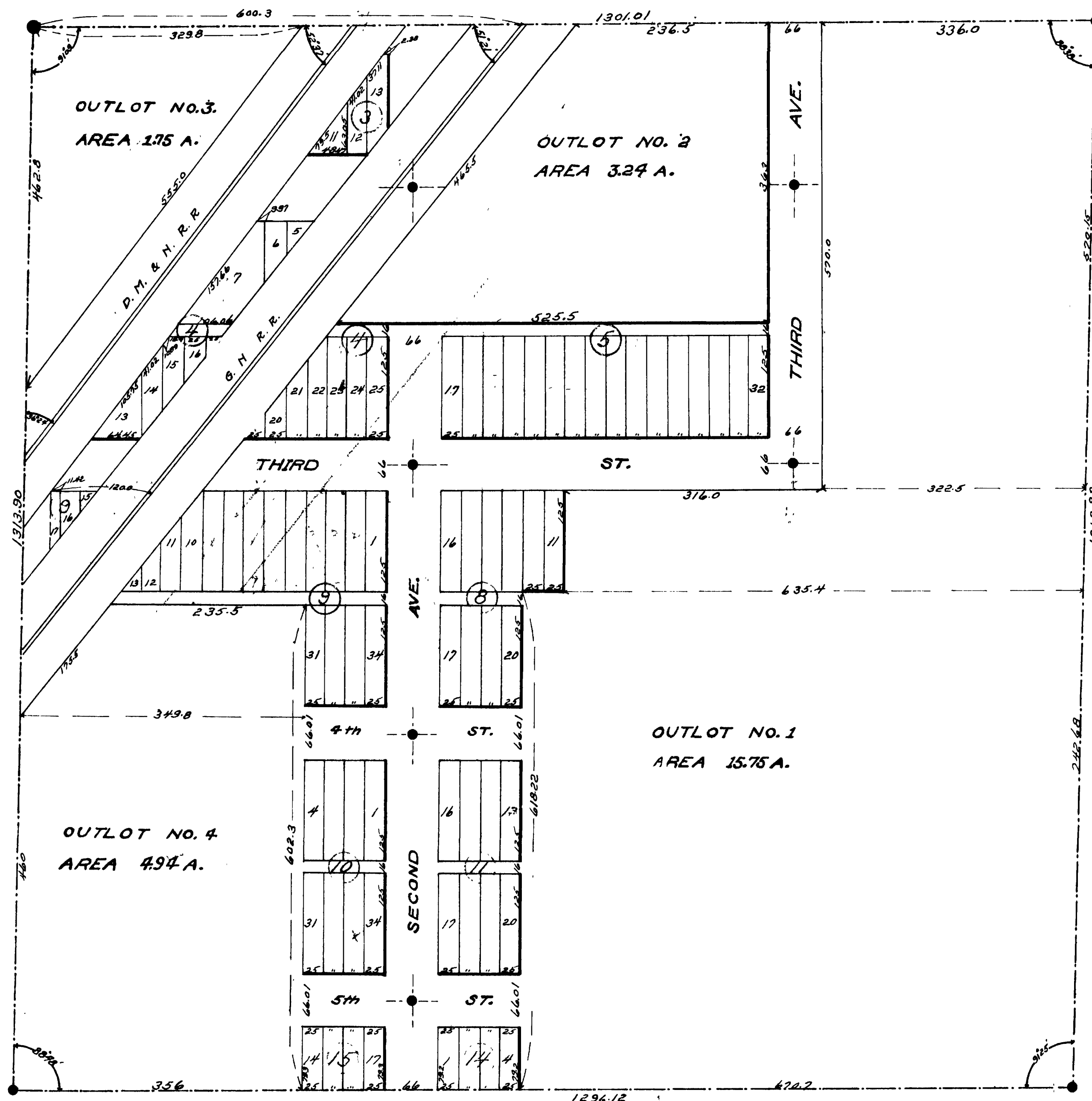


AUDITOR'S SUBDIVISION NO. 1

N. W. ¼ OF N. E. ¼ OF SECTION NO. 27
T. NO. 56 N., R. NO. 24 W.
ITASCA COUNTY, MINNESOTA

A MAP OF THE VACATED PORTIONS OF THE PLAT OF HOLMAN
SCALE-1 INCH EQUALS 100 FEET. • IRON MONUMENTS.

P. C. WARNER, ENGINEER.



DEDICATION

KNOW ALL MEN BY THESE PRESENTS:

That, pursuant to notice given to me by the Auditor of Itasca County, Minnesota, in accordance with the provisions of Section 2200 of the General Statutes of Minnesota, 1913, I, John P. Sims, an unmarried man, of Minneapolis, in Hennepin County, Minnesota, as the owner of all that part of the Northwest Quarter of the Northeast Quarter of Section No. 27, Township No. 56 North, Range No. 24 West of the Fourth Principal Meridian, being those portions of the Plat of Holman vacated by the decree of the District Court of Itasca County, Minnesota, entered on the 21st day of March, 1916, have caused the same to be surveyed and the annexed plat thereof to be made, in accordance with the statutes of the State of Minnesota, in such cases made and provided; Now, therefore, I do hereby ratify and confirm in all respects said survey and plat thereof as "AUDITOR'S SUBDIVISION No. 1" of the NW¼ of the NE¼ of Section No. 27, Township No. 56 North, Range No. 24 West, of the Fourth Principal Meridian, and sign and execute said plat.

In Witness Whereof, I have hereunto set my hand and seal this 17th day of July, A. D., 1916.
In the presence of:

John P. Sims
John P. Sims

STATE OF MINNESOTA }
County of Itasca } SS.

On this 17th day of July, A. D. 1916, personally appeared before me John P. Sims, widower, to me well known to be the person described in and who executed the foregoing certificate and acknowledged that he executed the same as his free act and deed.

Marcella White
Notary Public, Itasca County, Minn.
My commission expires Dec 31-1920

I, P. C. Warner, do hereby certify that I am a Civil Engineer and Surveyor, and that I have at the request of the proprietor thereof, from the notes of a survey of "Holman" by W. B. Patton, platted the property described in the foregoing certificate, being the vacated portions of the Plat of Holman, into Out Lots, as more fully appears on the annexed plat. All distances and areas shown on the plat are correct as taken from the Plat of Holman. Monuments for the guidance of future surveys are correctly planted in the ground as shown; there are no wet or swampy lands included therein except as shown; and there are no public highways laid out or traveled across said lands except as designated on the plat.

In the presence of:

Frank E. Rausaug
Edmond E. Warner

STATE OF MINNESOTA }
County of Itasca } SS.

On this 8th day of July, A. D. 1916, personally appeared before me P. C. Warner, to me known to be the County Surveyor of Itasca County, Minnesota, and to be the officer and person described in and who executed the foregoing certificate and acknowledged that he executed the same as his free act and deed.

P. C. Warner
P. C. Warner, Itasca County, Minn.
My commission expires _____

The annexed Plat was approved by action of the County Board of Itasca County, Minnesota, at a meeting held on the August day of 17th, A. D. 1916.

M. C. Bessie
Chairman

James Parland Transfer
Entered this 17th day of
August, A. D. 1917
James Parland
Auditor Itasca County
By *Edmond E. Warner*

Frank Deerman
County Auditor

70691
OFFICE OF REGISTER OF DEEDS
STATE OF MINNESOTA
County of Itasca
I hereby certify that the within
document is a true and correct
copy of the original as filed in this office
on 30th day of July, 1916.
E. M. Jordan
By *A. W. Haulton*