

MINNESOTA DEPARTMENT OF TRANSPORTATION RIGHT OF WAY PLAT NO. 31-185

CONTROL SECTION NO. 3108 (38=196) 906
IN THE NORTHWEST QUARTER OF THE SOUTHEAST QUARTER OF SECTION 33, T.59 N., R.26 W.,
IN GOVERNMENT LOT 6 OF SECTION 33, T.59 N., R.26 W.,
ITASCA COUNTY, MINNESOTA

THE COMMISSIONER OF TRANSPORTATION IS HEREBY DESIGNATING THE DEFINITE LOCATION OF TRUNK HIGHWAY NO. 38 FROM 0.2 MILES NORTH OF THE JUNCTION WITH COUNTY STATE AID HIGHWAY NO. 19 TO 1.5 MILES SOUTHEAST OF MARCELL

as shown on this plat prepared by the State of Minnesota Department of Transportation is hereby certified as the official plat of that portion of said T.H. 38 within the designated portion of Section 33 and the Commissioner's Order therefor, pursuant to Minnesota Statutes, Section 160.085, Section 160.14 subd. 1, Section 161.16 subd. 2, and Section 161.18.

It is further ordered that it is necessary to acquire all trees, shrubs, grass and herbage within the right of way of said Trunk Highway, and to keep and have the exclusive control of the same.

Commissioner's Order No. 96009 Location PLAT 31-185 Nature of Interest Definite location, width, access and temporary easement.

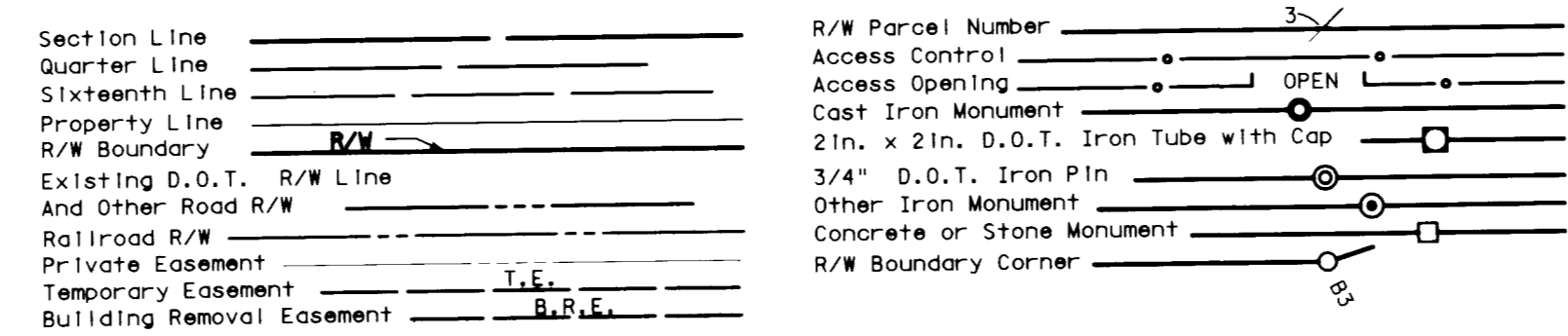
Certified by *Charles A. Zell* 9/20/17
Commissioner of Transportation
by Peter W. Jenkins Date
Assistant Director, Office of Land Management

I hereby certify that this plat was surveyed and prepared by me or under my direct supervision and that I am a duly Licensed Land Surveyor under the Laws of the State of Minnesota; that all measurements are correctly shown on this plat; that all monuments have been correctly placed corners as shown on this plat are on file in the County Recorder's Office (if required under Minnesota Statutes, Section 160.15) and/or the County Surveyor's Office; that this plat meets the requirements of Minnesota Statutes, Section 160.085, Section 160.14 subd. 1, Section 161.16 subd. 2, and Section 161.18; that the parcel ownerships are correctly described and delineated on the plat; and that the proposed right of way boundary lines are correctly designated on the plat.

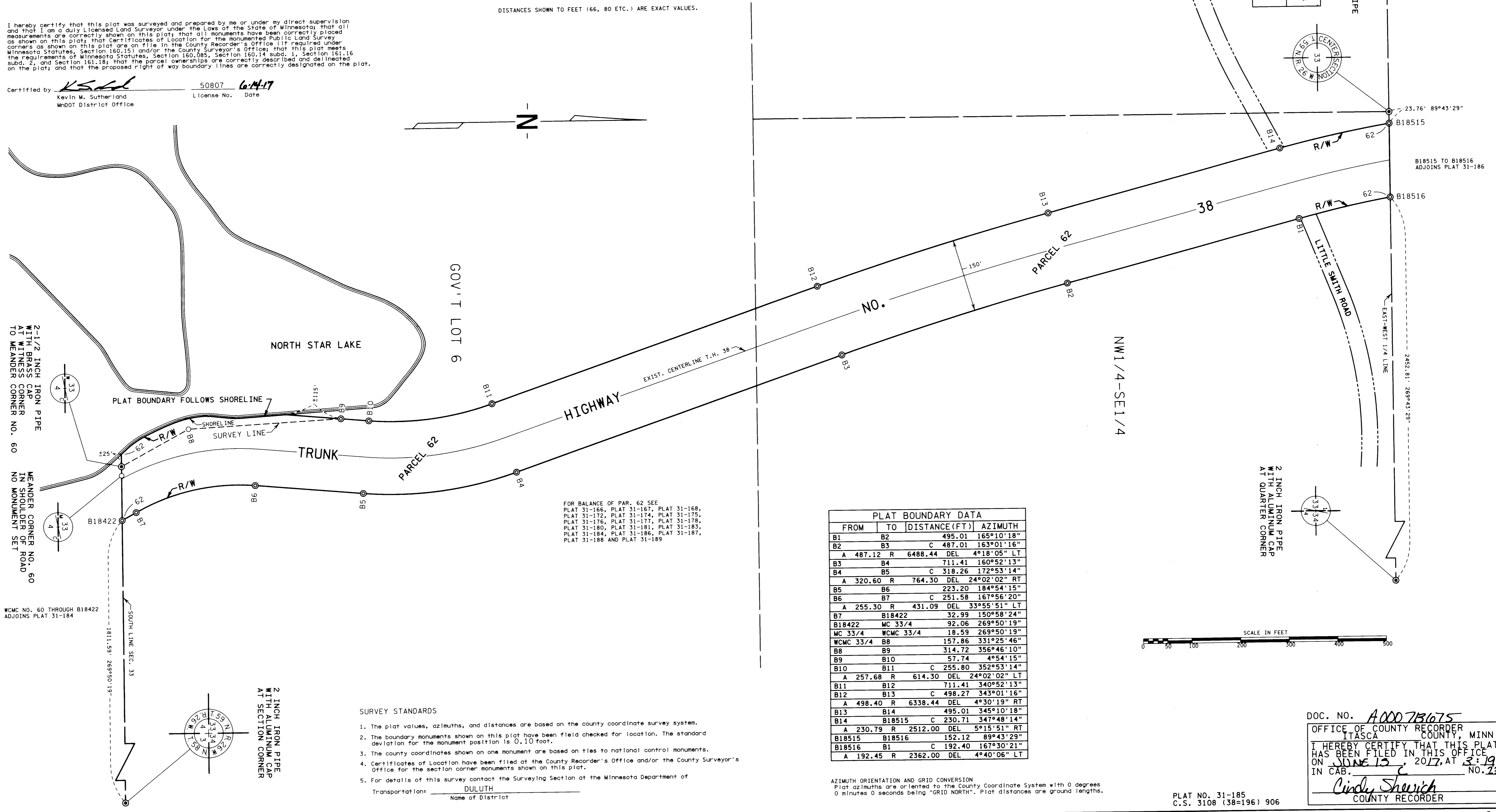
Certified by *Kev M. Sutherland* 50807 6/14/17
Kev M. Sutherland License No. Date
MnDOT District Office

RIGHT OF WAY IN SECTION 33					
PARCEL	OWNER	LOCATION	NEW T.H.	TEMPORARY	PERMANENT
			R/W	EASEMENT	
			ACRES	ACRES	INTEREST
			MORE OR LESS	MORE OR LESS	EXPIRES
62	UNITED STATES OF AMERICA	NW1/4 SE1/4 GOV'T LOT 6	8.62		EASEMENT

CONVENTIONAL SYMBOLS



DISTANCES SHOWN TO FEET (66, 80 ETC.) ARE EXACT VALUES.



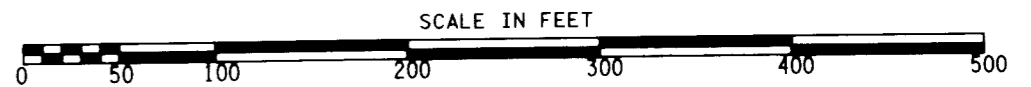
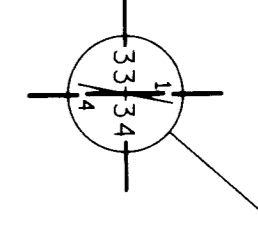
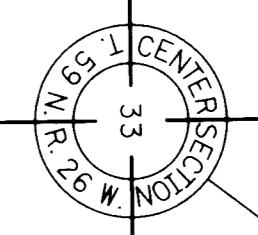
PLAT BOUNDARY DATA			
FROM	TO	DISTANCE (FT)	AZIMUTH
B1	B2	495.01	165°10'18"
B2	B3	C 487.01	163°01'16"
A	487.12 R 6488.44	DEL 4°18'05" LT	
B3	B4	711.41	160°52'13"
B4	B5	C 318.26	172°53'14"
A	320.60 R 764.30	DEL 24°02'02" RT	
B5	B6	223.20	184°54'15"
B6	B7	C 251.58	167°56'20"
A	255.30 R 431.09	DEL 33°55'51" LT	
B7	B18422	32.99	150°58'24"
B18422	MC 33/4	92.06	269°50'19"
MC 33/4	WCMC 33/4	18.59	269°50'19"
WCMC 33/4	B8	157.86	331°25'46"
B8	B9	314.72	356°46'10"
B9	B10	57.74	4°54'15"
B10	B11	C 255.80	352°53'14"
A	257.68 R 614.30	DEL 24°02'02" LT	
B11	B12	711.41	340°52'13"
B12	B13	C 498.27	343°01'16"
A	498.40 R 6338.44	DEL 4°30'19" RT	
B13	B14	495.01	345°10'18"
B14	B18515	C 230.71	347°48'14"
A	230.79 R 2512.00	DEL 5°15'51" RT	
B18515	B18516	152.12	89°43'29"
B18516	B1	C 192.40	167°30'21"
A	192.45 R 2362.00	DEL 4°40'06" LT	

FOR BALANCE OF PAR. 62 SEE PLAT 31-166, PLAT 31-167, PLAT 31-168, PLAT 31-172, PLAT 31-174, PLAT 31-175, PLAT 31-176, PLAT 31-177, PLAT 31-178, PLAT 31-180, PLAT 31-181, PLAT 31-183, PLAT 31-184, PLAT 31-186, PLAT 31-187, PLAT 31-188 AND PLAT 31-189

SURVEY STANDARDS

- The plat values, azimuths, and distances are based on the county coordinate survey system.
- The boundary monuments shown on this plat have been field checked for location. The standard deviation for the monument position is 0.10 foot.
- The county coordinates shown on one monument are based on ties to national control monuments.
- Certificates of Location have been filed at the County Recorder's Office and/or the County Surveyor's Office for the section corner monuments shown on this plat.
- For details of this survey contact the Surveying Section at the Minnesota Department of Transportation: DULUTH Name of District

ITASCA COUNTY COORDINATES
NORTH ZONE
X=520405.726
Y=118870.670
NAD 83(2011 ADJ.)



DOC. NO. A000751075
OFFICE OF COUNTY RECORDER
ITASCA COUNTY, MINN
I HEREBY CERTIFY THAT THIS PLAT
HAS BEEN FILED IN THIS OFFICE
ON JUNE 13, 2017, AT 3:19 PM
IN CAB. C NO. 235
Cindy Shewch
COUNTY RECORDER

PLAT NO. 31-185
C.S. 3108 (38=196) 906