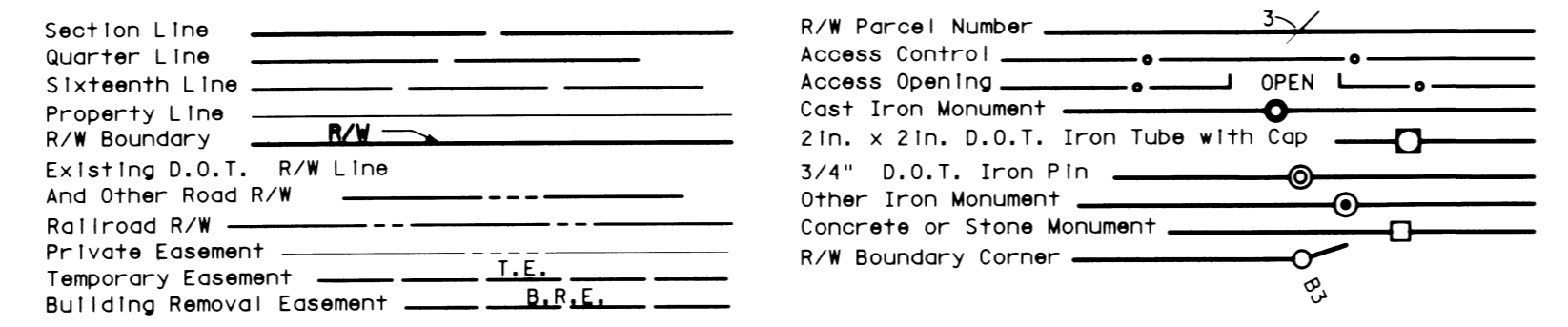


PLAT BOUNDARY DATA			
FROM	TO	DISTANCE(FT)	AZIMUTH
B1	B2	267.60	179°39'57"
B2	B3	302.49	182°15'16"
A	302.59 R 3349.04 DEL	5°10'36"	RT
B3	B4	63.91	184°50'34"
B4	B5	201.39	187°35'41"
A	201.47 R 2097.20 DEL	5°30'15"	RT
B5	B6	111.06	190°20'48"
B6	B17822	96.02	190°48'28"
A	96.02 R 5965.60 DEL	0°55'20"	RT
B17822	B17821	153.36	269°24'56"
B17821	B7	125.11	10°57'47"
A	125.11 R 5815.60 DEL	1°13'57"	LT
B7	B8	111.06	10°20'48"
B8	B9	186.98	7°35'41"
A	187.06 R 1947.20 DEL	5°30'15"	LT
B9	B10	63.91	4°50'34"
B10	B11	288.94	2°15'16"
A	289.04 R 3199.04 DEL	5°10'36"	LT
B11	B12	266.13	359°39'57"
B12	B17913	1574.99	358°32'36"
B17913	B17914	150.03	89°43'38"
B17914	B1	1573.36	178°32'36"

AZIMUTH ORIENTATION AND GRID CONVERSION
 Plat azimuths are oriented to the County Coordinate System with 0 degrees 0 minutes 0 seconds being "GRID NORTH". Plat distances are ground lengths.

RIGHT OF WAY IN SECTION 16					
PARCEL	OWNER	LOCATION	NEW T.H.	TEMPORARY	PERMANENT
			R/W	EASEMENT	R/W
			ACRES	ACRES	INTEREST
			MORE OR LESS	MORE OR LESS	EXPIRES
59	STATE OF MINNESOTA	E1/2 SE1/4	9.01		EASEMENT

CONVENTIONAL SYMBOLS



DISTANCES SHOWN TO FEET (66, 80 ETC.) ARE EXACT VALUES.

SURVEY STANDARDS

- The plat values, azimuths, and distances are based on the county coordinate survey system.
- The boundary monuments shown on this plat have been field checked for location. The standard deviation for the monument position is 0.10 foot.
- The county coordinates shown on one monument are based on ties to national control monuments.
- Certificates of Location have been filed at the County Recorder's Office and/or the County Surveyor's Office for the section corner monuments shown on this plat.
- For details of this survey contact the Surveying Section at the Minnesota Department of Transportation: DULUTH Name of District

MINNESOTA DEPARTMENT OF TRANSPORTATION
 RIGHT OF WAY PLAT NO. 31-179

CONTROL SECTION NO. 3108 (38=196) 906
 IN THE EAST HALF OF THE SOUTHEAST QUARTER OF SECTION 16, T.58 N., R.26 W.,
 ITASCA COUNTY, MINNESOTA

THE COMMISSIONER OF TRANSPORTATION IS HEREBY DESIGNATING THE DEFINITE LOCATION OF TRUNK HIGHWAY NO. 38 FROM 0.2 MILES NORTH OF THE JUNCTION WITH COUNTY STATE AID HIGHWAY NO. 19 TO 1.5 MILES SOUTHEAST OF MARCELL

as shown on this plat prepared by the State of Minnesota Department of Transportation is hereby certified as the official plat of that portion of said T.H. 38 within the designated portion of Section 16 and the Commissioner's Order therefor, pursuant to Minnesota Statutes, Section 160.085, Section 160.14 subd. 1, Section 161.16 subd. 2, and Section 161.18.

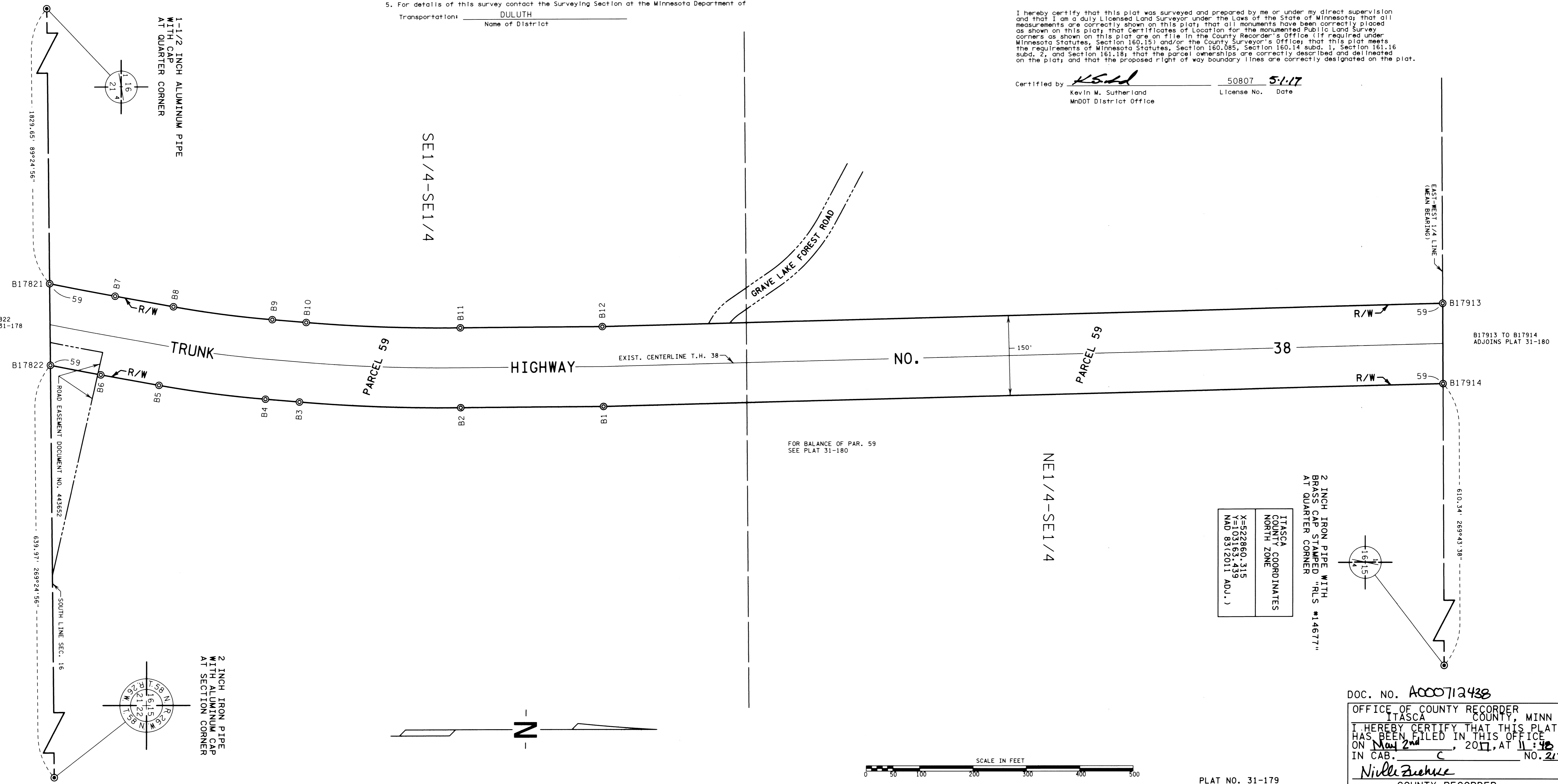
It is further ordered that it is necessary to acquire all trees, shrubs, grass and herbage within the right of way of said Trunk Highway, and to keep and have the exclusive control of the same.

Commissioner's Order No.	Location	Nature of Interest
95920	PLAT 31-179	Definite location, width, access and temporary easement.

Certified by:
 Charles A. Zelle
 Commissioner of Transportation
 Date: 24 Dec 17
 by Peter W. Jenkins
 Assistant Director, Office of Land Management

I hereby certify that this plat was surveyed and prepared by me or under my direct supervision and that I am a duly Licensed Land Surveyor under the Laws of the State of Minnesota; that all measurements are correctly shown on this plat; that all monuments have been correctly placed as shown on this plat; that Certificates of Location for the monumented Public Land Survey corners as shown on this plat are on file in the County Recorder's Office (if required under Minnesota Statutes, Section 160.15) and/or the County Surveyor's Office; that this plat meets the requirements of Minnesota Statutes, Section 160.085, Section 160.14 subd. 1, Section 161.16 subd. 2, and Section 161.18; that the parcel ownerships are correctly described and delineated on the plat; and that the proposed right of way boundary lines are correctly designated on the plat.

Certified by: Kevin M. Sutherland License No. 50807 Date 5-1-17
 MnDOT District Office



ITASCA COUNTY NORTH ZONE
 X-522860.315
 Y-103163.439
 NAD 83(2011 ADU.)

2 INCH IRON PIPE WITH BRASS CAP STAMPED "RLS #14677" AT QUARTER CORNER

DOC. NO. A000712438
 OFFICE OF COUNTY RECORDER
 ITASCA COUNTY, MINN
 I HEREBY CERTIFY THAT THIS PLAT HAS BEEN FILED IN THIS OFFICE ON May 2nd, 2017, AT 11:40 AM IN CAB. C NO. 217
Nicole Zuehlke
 COUNTY RECORDER

PLAT NO. 31-179
 C.S. 3108 (38=196) 906