

RIGHT OF WAY IN SECTION 21							
PARCEL	OWNER	LOCATION	TORRENS NUMBER	NEW T.H. R/W	TEMPORARY EASEMENT		PERMANENT R/W INTEREST
				ACRES MORE OR LESS	ACRES MORE OR LESS	EXPIRES	
62	UNITED STATES OF AMERICA	SE1/4 NE1/4 SW1/4 NE1/4 NE1/4 NE1/4	2354 2352	2.64 2.18 4.75			EASEMENT

PLAT BOUNDARY DATA			
FROM	TO	DISTANCE(FT)	AZIMUTH
B1	B2	427.03	194°25'21"
B2	B3	452.70	198°25'01"
A	453.06 R 3249.41 DEL	7°59'19"	RT
B3	B4	96.94	202°24'41"
B4	B5	253.16	196°29'04"
A	253.61 R 1225.83 DEL	11°51'14"	LT
B5	B6	235.24	190°33'27"
B6	B7	271.68	199°12'28"
A	272.71 R 903.18 DEL	17°18'01"	RT
B7	B8	208.16	207°51'28"
B8	B9	366.80	200°48'26"
A	367.73 R 1494.19 DEL	14°06'03"	LT
B9	B10	136.69	193°45'25"
B10	B11	154.96	269°13'39"
B11	B12	175.57	13°45'25"
B12	B13	403.63	20°48'26"
A	404.65 R 1644.19 DEL	14°06'03"	RT
B13	B14	208.16	27°51'28"
B14	B15	226.56	19°12'28"
A	227.42 R 753.18 DEL	17°18'01"	LT
B15	B16	235.24	10°33'27"
B16	B17	284.14	16°29'04"
A	284.64 R 1375.83 DEL	11°51'14"	RT
B17	B18	96.94	22°24'41"
B18	B19	431.80	18°25'01"
A	432.15 R 3099.41 DEL	7°59'19"	LT
B19	B20	427.03	14°25'21"
B20	B17821	288.56	13°00'03"
A	288.59 R 5815.60 DEL	2°50'36"	LT
B17821	B17822	153.36	89°24'56"
B17822	B1	328.31	192°50'45"
A	328.35 R 5965.60 DEL	3°09'13"	RT

MINNESOTA DEPARTMENT OF TRANSPORTATION RIGHT OF WAY PLAT NO. 31-178

CONTROL SECTION NO. 3108 (38=196) 906
IN THE SOUTHWEST QUARTER OF THE NORTHEAST QUARTER OF SECTION 21, T.58 N., R.26 W.,
IN THE EAST HALF OF THE NORTHEAST QUARTER OF SECTION 21, T.58 N., R.26 W.,
ITASCA COUNTY, MINNESOTA

THE COMMISSIONER OF TRANSPORTATION IS HEREBY DESIGNATING THE DEFINITE LOCATION OF TRUNK HIGHWAY NO. 38 FROM 0.2 MILES NORTH OF THE JUNCTION WITH COUNTY STATE AID HIGHWAY NO. 19 TO 1.5 MILES SOUTHEAST OF MARCELL

as shown on this plat prepared by the State of Minnesota Department of Transportation is hereby certified as the official plat of that portion of said T.H. 38 within the designated portion of Section 21 and the Commissioner's Order therefor, pursuant to Minnesota Statutes, Section 160.085, Section 160.14 subd. 1, Section 161.16 subd. 2, and Section 161.18.

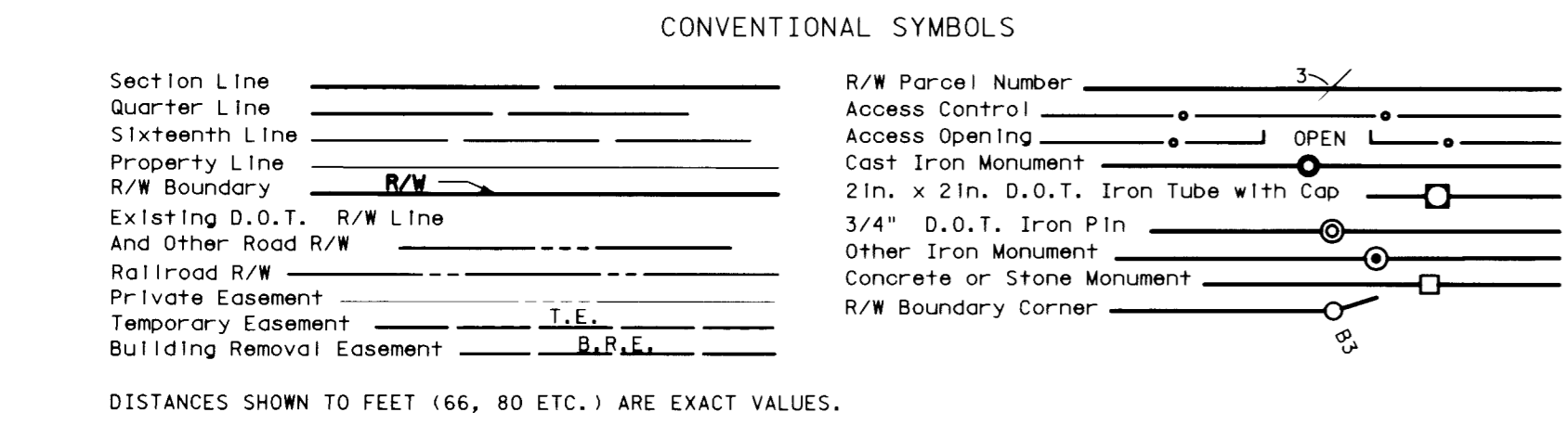
It is further ordered that it is necessary to acquire all trees, shrubs, grass and herbage within the right of way of said Trunk Highway, and to keep and have the exclusive control of the same.

Commissioner's Order No.	Location	Nature of Interest
95911	PLAT 31-178	Definite location, width, access and temporary easement.

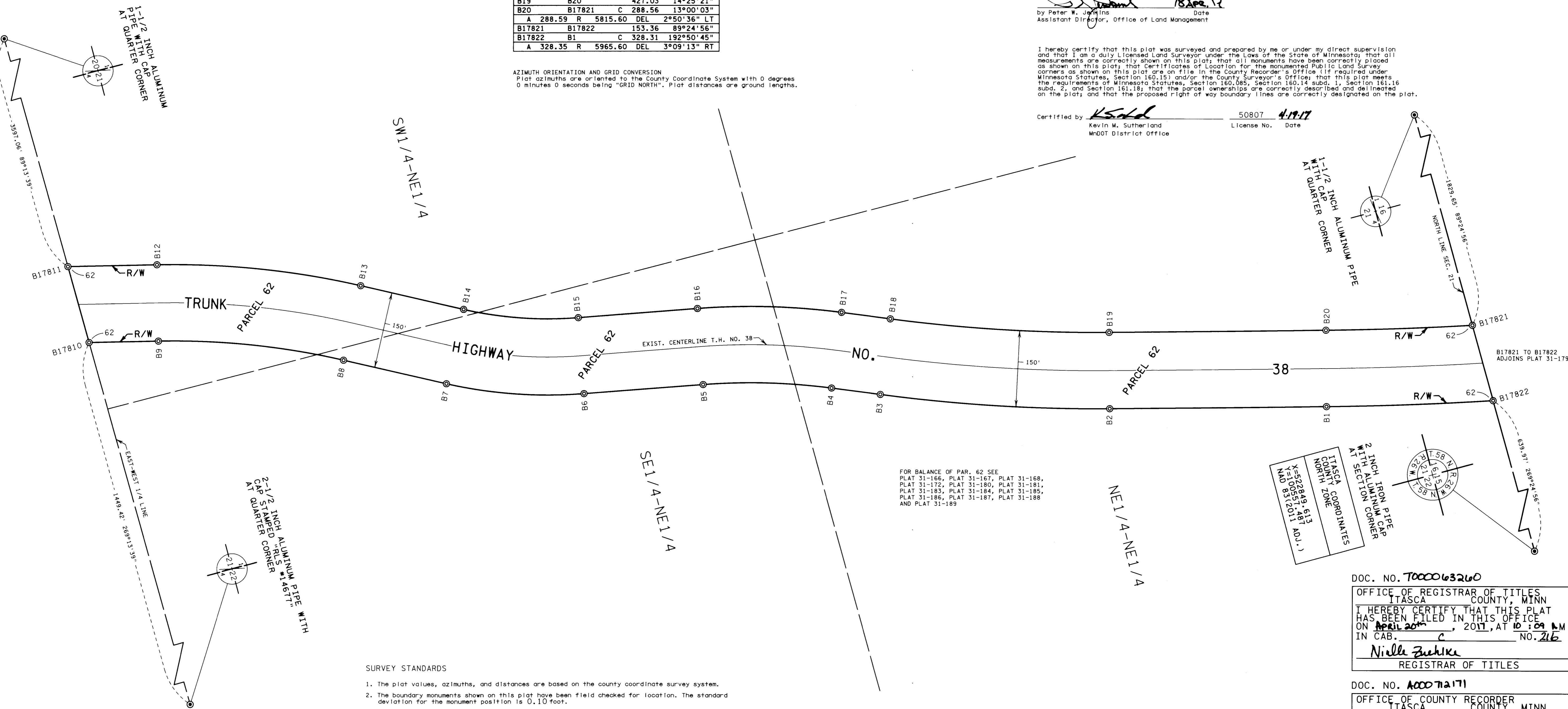
Certified by: *Christina Zelle*
Commissioner of Transportation
Date: 18 Apr. 17
by Peter W. Jenkins, Assistant Director, Office of Land Management

I hereby certify that this plat was surveyed and prepared by me or under my direct supervision and that I am a duly Licensed Land Surveyor under the Laws of the State of Minnesota; that all measurements are correctly shown on this plat; that all monuments have been correctly placed as shown on this plat; that Certificates of Location for the monumented Public Land Survey corners as shown on this plat are on file in the County Recorder's Office (if required under Minnesota Statutes, Section 160.15) and/or the County Surveyor's Office; that this plat meets the requirements of Minnesota Statutes, Section 160.085, Section 160.14 subd. 1, Section 161.16 subd. 2, and Section 161.18; that the parcel ownerships are correctly described and delineated on the plat; and that the proposed right of way boundary lines are correctly designated on the plat.

Certified by: *Kevin M. Sutherland*
MnDOT District Office License No. 50807 Date 4-19-17



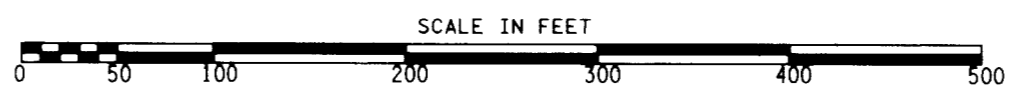
AZIMUTH ORIENTATION AND GRID CONVERSION
Plat azimuths are oriented to the County Coordinate System with 0 degrees 0 minutes 0 seconds being "GRID NORTH". Plat distances are ground lengths.



FOR BALANCE OF PAR. 62 SEE
PLAT 31-166, PLAT 31-167, PLAT 31-168,
PLAT 31-172, PLAT 31-180, PLAT 31-181,
PLAT 31-183, PLAT 31-184, PLAT 31-185,
PLAT 31-186, PLAT 31-187, PLAT 31-188
AND PLAT 31-189

ITASCA COORDINATES
NORTH ZONE
X=529849.613
Y=100551.487 (ADJ.)
MAD 83(2011)

- SURVEY STANDARDS
- The plat values, azimuths, and distances are based on the county coordinate survey system.
 - The boundary monuments shown on this plat have been field checked for location. The standard deviation for the monument position is 0.10 foot.
 - The county coordinates shown on one monument are based on ties to national control monuments.
 - Certificates of Location have been filed at the County Recorder's Office and/or the County Surveyor's Office for the section corner monuments shown on this plat.
 - For details of this survey contact the Surveying Section at the Minnesota Department of Transportation: DULUTH
Name of District: _____



DOC. NO. T000063260
OFFICE OF REGISTRAR OF TITLES
ITASCA COUNTY, MINN
I HEREBY CERTIFY THAT THIS PLAT
HAS BEEN FILED IN THIS OFFICE
ON April 20, 2017, AT 10:09 AM
IN CAB. C NO. 216
Niella Zuehke
REGISTRAR OF TITLES

DOC. NO. AC0071171
OFFICE OF COUNTY RECORDER
ITASCA COUNTY, MINN
I HEREBY CERTIFY THAT THIS PLAT
HAS BEEN FILED IN THIS OFFICE
ON April 20, 2017, AT 10:07 AM
IN CAB. C NO. 216
Niella Zuehke
COUNTY RECORDER

PLAT NO. 31-178
C.S. 3108 (38=196) 906