

# MINNESOTA DEPARTMENT OF TRANSPORTATION RIGHT OF WAY PLAT NO. 31-177

CONTROL SECTION NO. 3108 (38=196) 906  
IN THE WEST HALF OF THE SOUTHEAST QUARTER OF SECTION 21, T.58 N., R.26 W.,  
ITASCA COUNTY, MINNESOTA

THE COMMISSIONER OF TRANSPORTATION IS HEREBY DESIGNATING THE DEFINITE  
LOCATION OF TRUNK HIGHWAY NO. 38 FROM 0.2 MILES NORTH OF THE JUNCTION  
WITH COUNTY STATE AID HIGHWAY NO. 19 TO 1.5 MILES SOUTHEAST OF MARCELL

as shown on this plat prepared by the State of Minnesota Department of Transportation is hereby certified as  
the official plat of that portion of said T.H. 38 within the designated portion of Section 21  
and the Commissioner's Order therefor, pursuant to Minnesota Statutes, Section 160.085, Section  
160.14 subd. 1, Section 161.16 subd. 2, and Section 161.18.

It is further ordered that it is necessary to acquire all trees, shrubs, grass and herbage within the  
right of way of said Trunk Highway, and to keep and have the exclusive control of the same.

Commissioner's Order No. 95980 Location PLAT 31-177 Nature of Interest  
Definite location, width,  
access and temporary easement.

Certified by:  
Charles A. Zelle  
Commissioner of Transportation  
Date 31 May 17  
by Peter W. Perkins Date  
Assistant Director, Office of Land Management

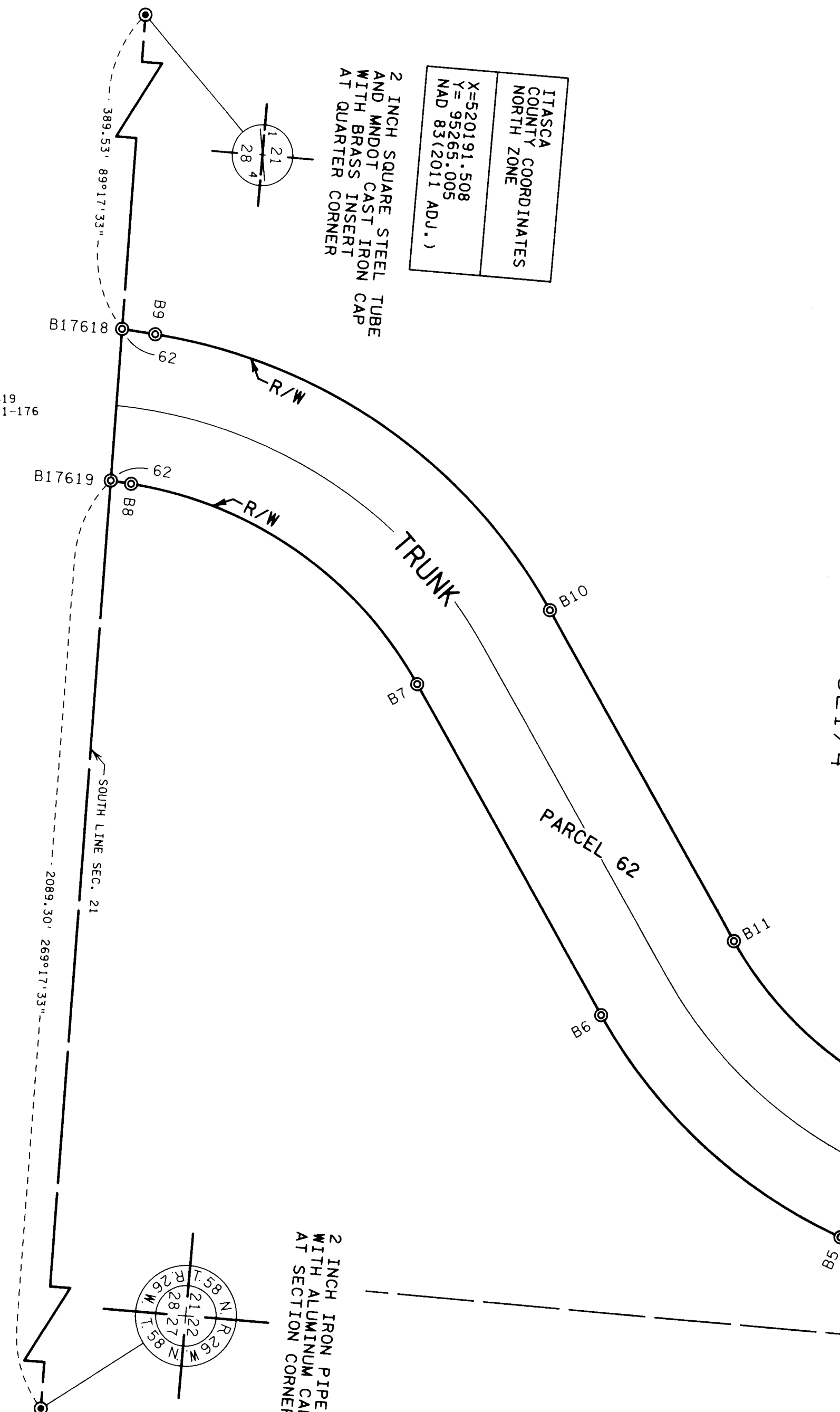
I hereby certify that this plat was surveyed and prepared by me or under my direct supervision  
and that I am a duly Licensed Land Surveyor under the Laws of the State of Minnesota; that all  
measurements are correctly shown on this plat; that all monuments have been correctly placed  
as shown on this plat; that Certificates of Location for the monumented Public Land Survey  
corners as shown on this plat are on file in the County Recorder's Office (if required under  
Minnesota Statutes, Section 160.15) and/or the County Surveyor's Office; that this plat meets  
the requirements of Minnesota Statutes, Section 160.085, Section 160.14 subd. 1, Section 161.16  
subd. 2, and Section 161.18; that the parcel ownerships are correctly described and delineated  
on the plat; and that the proposed right of way boundary lines are correctly designated on the plat.

Certified by: *Kevin M. Sutherland* License No. 50807 Date 6-1-17  
Kevin M. Sutherland License No. 50807 Date 6-1-17  
MnDOT District Office

PLAT BOUNDARY DATA			
FROM	TO	DISTANCE(FT)	AZIMUTH
B1	B2	C 400.54	181°03'29"
A	403.83 R	911.02 DEL	25°23'52" LT
B2	B3	678.19	168°21'32"
B3	B4	C 158.79	171°29'40"
A	158.87 R	1451.52 DEL	6°16'15" RT
B4	B5	C 269.09	187°18'06"
A	271.29 R	613.33 DEL	25°20'36" RT
B5	B6	C 323.16	217°58'11"
A	328.54 R	523.00 DEL	35°59'33" RT
B6	B7	374.75	235°57'57"
B7	B8	C 345.68	210°04'33"
A	357.73 R	395.84 DEL	51°46'48" LT
B8	B17619	20.30	184°11'09"
B17619	B17618	150.55	269°17'33"
B17618	B9	33.14	4°11'09"
B9	B10	C 476.68	30°04'33"
A	493.29 R	545.84 DEL	51°46'48" RT
B10	B11	374.75	55°57'57"
B11	B12	C 230.48	37°58'11"
A	234.31 R	373.00 DEL	35°59'33" LT
B12	B13	C 203.28	7°18'06"
A	204.94 R	463.33 DEL	25°20'36" LT
B13	B14	C 142.38	351°29'40"
A	142.45 R	1301.52 DEL	6°16'15" LT
B14	B15	678.19	348°21'32"
B15	B16	C 466.48	1°03'29"
A	470.32 R	1061.02 DEL	25°23'52" RT
B16	B17717	335.55	13°45'25"
B17717	B17718	154.96	89°13'39"
B17718	B1	374.42	193°45'25"

AZIMUTH ORIENTATION AND GRID CONVERSION  
Plat azimuths are oriented to the County Coordinate System with 0 degrees  
0 minutes 0 seconds being "GRID NORTH". Plat distances are ground lengths.

FOR BALANCE OF PAR. 62 SEE  
PLAT 31-166, PLAT 31-167, PLAT 31-168,  
PLAT 31-172, PLAT 31-174, PLAT 31-175,  
PLAT 31-176, PLAT 31-178, PLAT 31-180,  
PLAT 31-181, PLAT 31-183, PLAT 31-184,  
PLAT 31-185, PLAT 31-186, PLAT 31-187,  
PLAT 31-188 AND PLAT 31-189



ITASCA COUNTY COORDINATES  
NORTH ZONE  
X=520191.508  
Y=95265.005  
NAD 83(2011 ADU.)

2 INCH SQUARE STEEL TUBE  
AND WINDOT CAST IRON CAP  
WITH BRASS INSERT  
AT QUARTER CORNER

2 INCH IRON PIPE  
WITH ALUMINUM CAP  
AT SECTION CORNER

1-1/2 INCH ALUMINUM  
PIPE WITH CAP  
AT QUARTER CORNER

2-1/2 INCH ALUMINUM PIPE WITH  
CAP STAMPED "RLS #14677"  
AT QUARTER CORNER

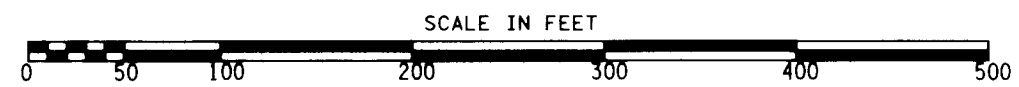
### CONVENTIONAL SYMBOLS

Section Line	_____	R/W Parcel Number	3/4
Quarter Line	_____	Access Control	○
Sixteenth Line	_____	Access Opening	○ OPEN
Property Line	_____	Cast Iron Monument	○
R/W Boundary	_____	2in. x 2in. D.O.T. Iron Tube with Cap	○
Existing D.O.T. R/W Line	_____	3/4" D.O.T. Iron Pin	○
And Other Road R/W	_____	Other Iron Monument	○
Railroad R/W	_____	Concrete or Stone Monument	○
Private Easement	_____	R/W Boundary Corner	○
Temporary Easement	_____		
Building Removal Easement	_____		

DISTANCES SHOWN TO FEET (66, 80 ETC.) ARE EXACT VALUES.

### SURVEY STANDARDS

- The plat values, azimuths, and distances are based on the county coordinate survey system.
- The boundary monuments shown on this plat have been field checked for location. The standard deviation for the monument position is 0.10 foot.
- The county coordinates shown on one monument are based on ties to national control monuments.
- Certificates of Location have been filed at the County Recorder's Office and/or the County Surveyor's Office for the section corner monuments shown on this plat.
- For details of this survey contact the Surveying Section at the Minnesota Department of Transportation:  
DULUTH  
Name of District \_\_\_\_\_



RIGHT OF WAY IN SECTION 28						
PARCEL	OWNER	LOCATION	TORRENS NUMBER	TEMPORARY EASEMENT		PERMANENT R/W INTEREST
				ACRES MORE OR LESS	ACRES MORE OR LESS	
62	UNITED STATES OF AMERICA	NW1/4 SE1/4 SW1/4 SE1/4	2352	4.61		EASEMENT
				5.61		

DOC. NO. T000063367  
OFFICE OF REGISTRAR OF TITLES  
ITASCA COUNTY, MINN  
I HEREBY CERTIFY THAT THIS PLAT  
HAS BEEN FILED IN THIS OFFICE  
ON June 1st, 2017, AT 4:09 PM  
IN CAB. NO. 228  
*Nelle Fuchner*  
REGISTRAR OF TITLES

DOC. NO. A000713239  
OFFICE OF COUNTY RECORDER  
ITASCA COUNTY, MINN  
I HEREBY CERTIFY THAT THIS PLAT  
HAS BEEN FILED IN THIS OFFICE  
ON June 1st, 2017, AT 3:50 PM  
IN CAB. NO. 228  
*Nelle Fuchner*  
COUNTY RECORDER

PLAT NO. 31-177  
C.S. 3108 (38=196) 906