

THE COMMISSIONER OF TRANSPORTATION IS HEREBY DESIGNATING THE DEFINITE LOCATION OF TRUNK HIGHWAY NO. 38 FROM 0.2 MILES NORTH OF THE JUNCTION WITH COUNTY STATE AID HIGHWAY NO. 19 TO 1.5 MILES SOUTHEAST OF MARCELL

as shown on this plat prepared by the State of Minnesota Department of Transportation is hereby certified as the official plat of that portion of said T.H. 38 within the designated portion of Section 34 and the Commissioner's Order therefor, pursuant to Minnesota Statutes, Section 160.085, Section 160.14 subd. 1, Section 161.16 subd. 2, and Section 161.18.

It is further ordered that it is necessary to acquire all trees, shrubs, grass and herbage within the right of way of said Trunk Highway, and to keep and have the exclusive control of the same.

Commissioner's Order No. 95972 Location PLAT 31-173 Nature of Interest Definite location, width, access and temporary easement.

Certified by Charles A. Zelle, Commissioner of Transportation, dated 30 May 17

by Peter W. Jenkins, Assistant Director, Office of Land Management

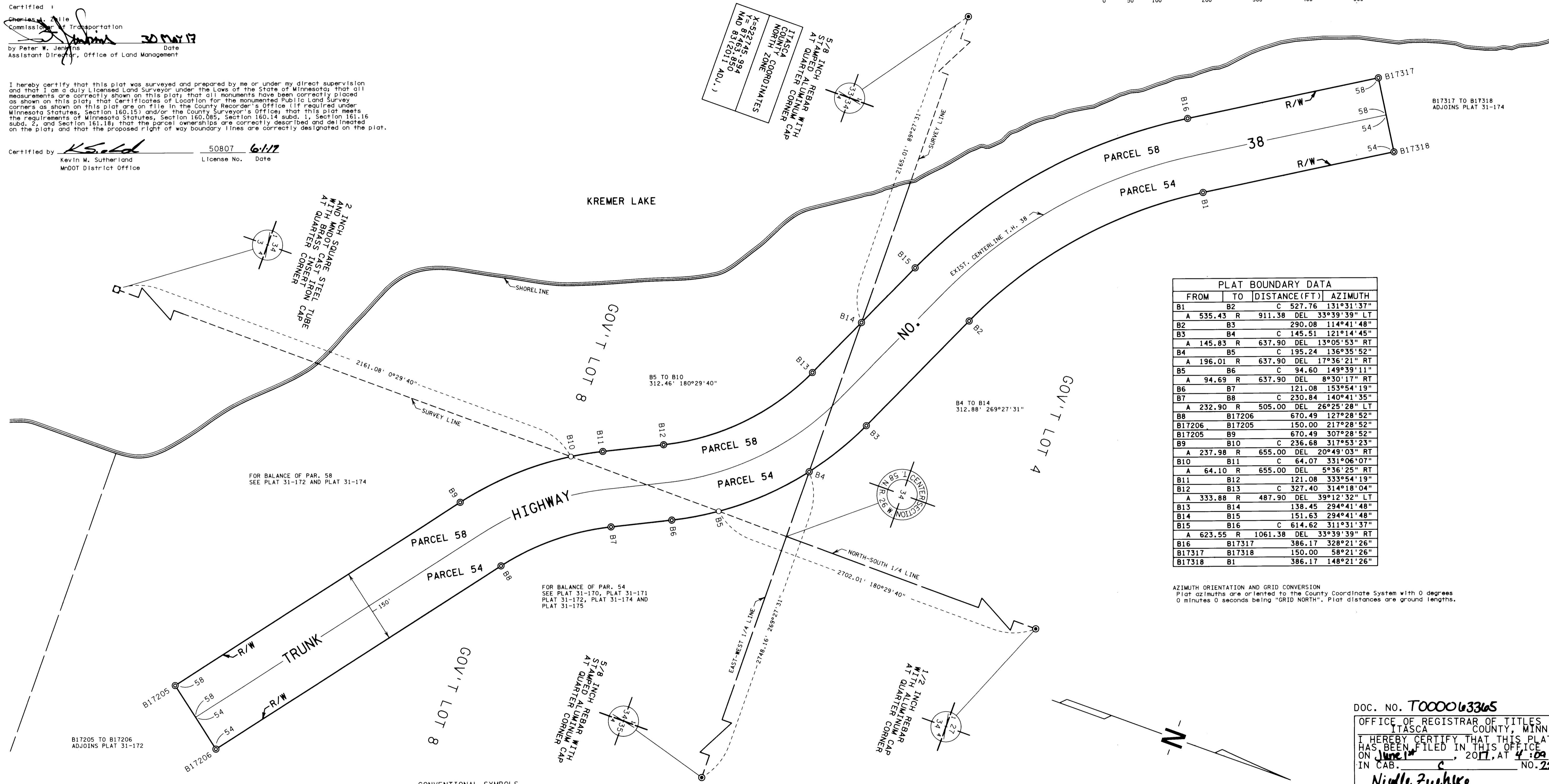
I hereby certify that this plat was surveyed and prepared by me or under my direct supervision and that I am a duly licensed Land Surveyor under the Laws of the State of Minnesota; that all measurements are correctly shown on this plat; that all monuments have been correctly placed as shown on this plat; that Certificates of Location for the monumented Public Land Survey corners as shown on this plat are on file in the County Recorder's Office (if required under Minnesota Statutes, Section 160.15) and/or the County Surveyor's Office; that this plat meets the requirements of Minnesota Statutes, Section 160.085, Section 160.14 subd. 1, Section 161.16 subd. 2, and Section 161.18; that the parcel ownerships are correctly described and delineated on the plat; and that the proposed right of way boundary lines are correctly designated on the plat.

Certified by Kevin M. Sutherland, License No. 50807, Date 6/17, MnDOT District Office

Table with 7 columns: PARCEL, OWNER, LOCATION, TORRENS NUMBER, NEW T.H. R/W, TEMPORARY EASEMENT, PERMANENT R/W INTEREST. Rows include parcels 54 and 58.

MINNESOTA DEPARTMENT OF TRANSPORTATION RIGHT OF WAY PLAT NO. 31-173

CONTROL SECTION NO. 3108 (38=196) 906 IN GOVERNMENT LOT 4 AND GOVERNMENT LOT 8 OF SECTION 34, T.58 N., R.26 W., ITASCA COUNTY, MINNESOTA



PLAT BOUNDARY DATA table with columns: FROM, TO, DISTANCE (FT), AZIMUTH. Lists boundary points B1 through B16 and distances/azimuths.

AZIMUTH ORIENTATION AND GRID CONVERSION: Plat azimuths are oriented to the County Coordinate System with 0 degrees 0 minutes 0 seconds being 'GRID NORTH'.

B17205 TO B17206 ADJOINS PLAT 31-172

FOR BALANCE OF PAR. 58 SEE PLAT 31-172 AND PLAT 31-174

FOR BALANCE OF PAR. 54 SEE PLAT 31-170, PLAT 31-171, PLAT 31-172, PLAT 31-174 AND PLAT 31-175

CONVENTIONAL SYMBOLS and SURVEY STANDARDS tables. Lists symbols for Section Line, Quarter Line, etc., and standards for monumentation and surveying.

DISTANCES SHOWN TO FEET (66, 80 ETC.) ARE EXACT VALUES.

DOC. NO. T000063365 OFFICE OF REGISTRAR OF TITLES ITASCA COUNTY, MINN. HEREBY CERTIFY THAT THIS PLAT HAS BEEN FILED IN THIS OFFICE ON June 14, 2017, AT 4:00 PM IN CAB. NO. 227 Nicole Zuehlke REGISTRAR OF TITLES

DOC. NO. A000713288 OFFICE OF COUNTY RECORDER ITASCA COUNTY, MINN. HEREBY CERTIFY THAT THIS PLAT HAS BEEN FILED IN THIS OFFICE ON June 14, 2017, AT 3:50 PM IN CAB. NO. 227 Nicole Zuehlke COUNTY RECORDER

PLAT NO. 31-173 C.S. 3108 (38=196) 906