

THE COMMISSIONER OF TRANSPORTATION IS HEREBY DESIGNATING THE DEFINITE LOCATION OF TRUNK HIGHWAY NO. 38 FROM 0.2 MILES NORTH OF THE JUNCTION WITH COUNTY STATE AID HIGHWAY NO. 19 TO 1.5 MILES SOUTHEAST OF MARCELL

as shown on this plat prepared by the State of Minnesota Department of Transportation is hereby certified as the official plat of that portion of said T.H. 38 within the designated portion of Sections 13 & 14 and the Commissioner's Order thereon, pursuant to Minnesota Statutes, Section 160.085, Section 160.14 subd. 1, Section 161.16 subd. 2, and Section 161.18.

It is further ordered that it is necessary to acquire all trees, shrubs, grass and herbage within the right of way of said Trunk Highway, and to keep and have the exclusive control of the same.

Commissioner's Order No. 95898 Location PLAT 31-167 Nature of Interest Definite location, width, access and temporary easement.

Certified by Charles A. Zelle, Commissioner of Transportation, by Peter W. Jenkins, Assistant Director, Office of Land Management, dated 4/10/17

I hereby certify that this plat was surveyed and prepared by me or under my direct supervision and that I am a duly licensed Land Surveyor under the Laws of the State of Minnesota; that all measurements are correctly shown on this plat; that all monuments have been correctly placed as shown on this plat; that Certificates of Location for the monumented Public Land Survey corners as shown on this plat are on file in the County Recorder's Office...

Certified by Kevin M. Sutherland, MnDOT District Office, License No. 50807, Date 4-13-17

SURVEY STANDARDS

- 1. The plat values, azimuths, and distances are based on the county coordinate survey system.
2. The boundary monuments shown on this plat have been field checked for location. The standard deviation for the monument position is 0.10 foot.
3. The county coordinates shown on one monument are based on ties to national control monuments.
4. Certificates of Location have been filed at the County Recorder's Office and/or the County Surveyor's Office for the section corner monuments shown on this plat.
5. For details of this survey contact the Surveying Section at the Minnesota Department of Transportation: DULUTH, Name of District

ITASCA COUNTY COORDINATES NORTH ZONE
X=53189.178
Y=71572.578
NAD 83(2011 ADJ.)

1-1/2 INCH IRON PIPE WITH ALUMINUM CAP AT QUARTER CORNER

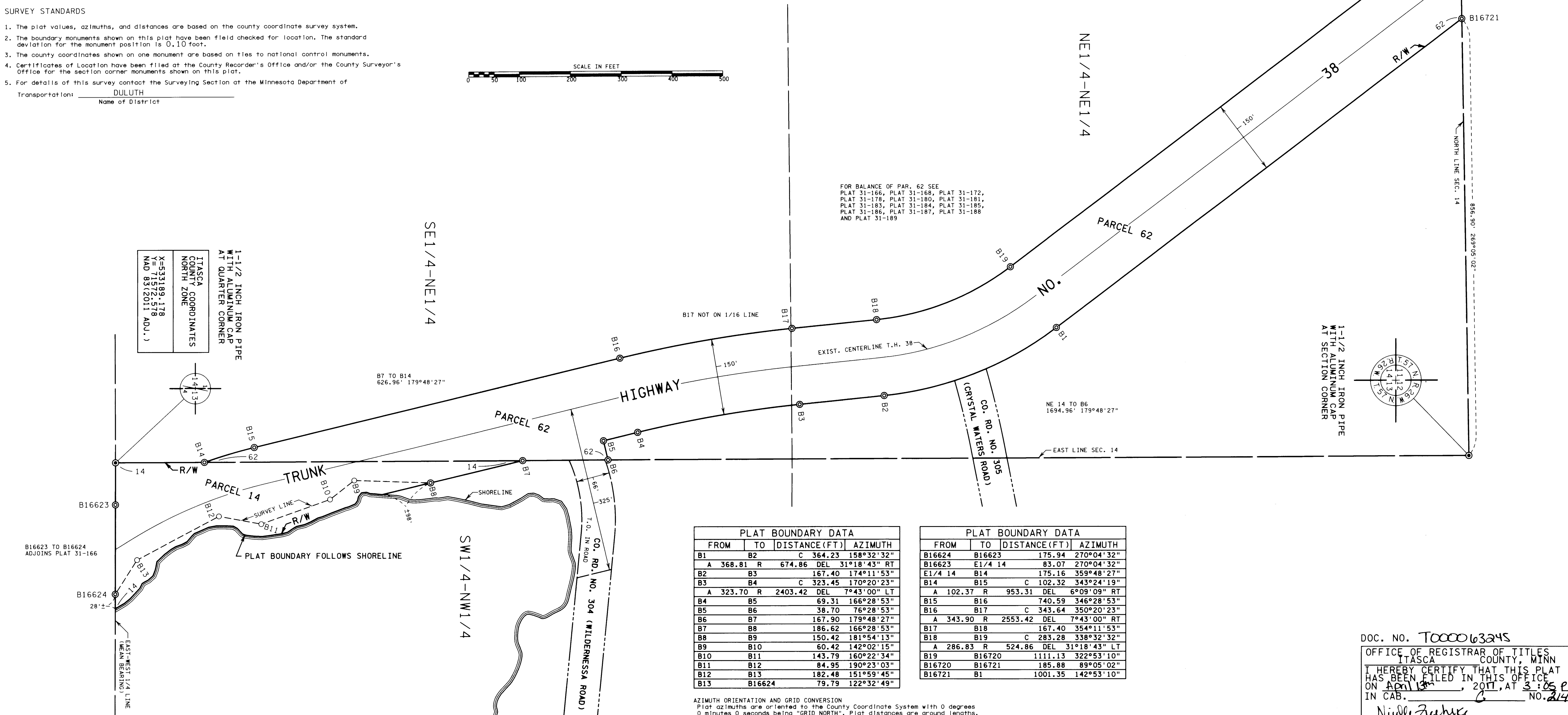
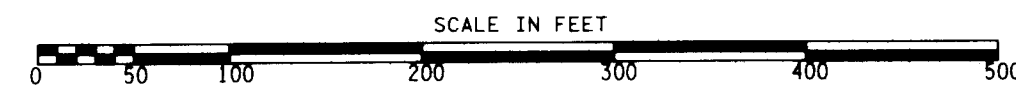


Table: RIGHT OF WAY IN SECTION 13. Columns: PARCEL, OWNER, LOCATION, TORRENS NUMBER, NEW T.H. R/W, TEMPORARY EASEMENT, PERMANENT R/W INTEREST.

Table: RIGHT OF WAY IN SECTION 14. Columns: PARCEL, OWNER, LOCATION, TORRENS NUMBER, NEW T.H. R/W, TEMPORARY EASEMENT, PERMANENT R/W INTEREST.

NOTE: TEMPORARY COMMISSIONER'S ORDERS IN PUBLIC ROADS WILL EXPIRE ON 12/01/2022

CONVENTIONAL SYMBOLS. Legend for Section Line, Quarter Line, Sixteenth Line, Property Line, R/W Boundary, Existing D.O.T. R/W Line, And Other Road R/W, Railroad R/W, Private Easement, Temporary Easement, Building Removal Easement, R/W Parcel Number, Access Control, Access Opening, Cast Iron Monument, 2 In. x 2 In. D.O.T. Iron Tube with Cap, 3/4" D.O.T. Iron Pin, Other Iron Monument, Concrete or Stone Monument, R/W Boundary Corner.



FOR BALANCE OF PAR. 62 SEE PLAT 31-166, PLAT 31-168, PLAT 31-172, PLAT 31-176, PLAT 31-180, PLAT 31-181, PLAT 31-183, PLAT 31-184, PLAT 31-185, PLAT 31-186, PLAT 31-187, PLAT 31-188 AND PLAT 31-189

PLAT BOUNDARY DATA table with columns: FROM, TO, DISTANCE (FT), AZIMUTH. Lists points B1 through B13.

PLAT BOUNDARY DATA table with columns: FROM, TO, DISTANCE (FT), AZIMUTH. Lists points B16624 through B16721.

AZIMUTH ORIENTATION AND GRID CONVERSION. Plat azimuths are oriented to the County Coordinate System with 0 degrees 0 minutes 0 seconds being "GRID NORTH". Plat distances are ground lengths.

MINNESOTA DEPARTMENT OF TRANSPORTATION RIGHT OF WAY PLAT NO. 31-167

CONTROL SECTION NO. 3108 (38=196) 906 IN THE SOUTHWEST QUARTER OF THE NORTHWEST QUARTER OF SECTION 13, T.57 N., R.26 W., IN THE EAST HALF OF THE NORTHEAST QUARTER OF SECTION 14, T. 57 N., R.26 W., ITASCA COUNTY, MINNESOTA

DOC. NO. T000063245 OFFICE OF REGISTRAR OF TITLES ITASCA COUNTY, MINN. I HEREBY CERTIFY THAT THIS PLAT HAS BEEN FILED IN THIS OFFICE ON April 13, 2017, AT 3:05 PM IN CAB. NO. 214 Nilda Zuhke REGISTRAR OF TITLES