

PARCEL	OWNER	LOCATION	NEW T.H. R/W		TEMPORARY EASEMENT		TEMPORARY EASEMENT EXPIRES ON	PERMANENT R/W INTEREST
			HECTARES	ACRES	HECTARES	ACRES		
			(MORE OR LESS)	(MORE OR LESS)	(MORE OR LESS)	(MORE OR LESS)		
250	DAVID E. CHILDS	NE1/4SE1/4 GOV'T LOT 1	0.777	1.92				FEE
251	ROBERT A. LaPLANT	NE1/4SE1/4	0.151	0.37				FEE
253	MICHAEL F. TRUEMPLER	NE1/4SE1/4	0.153	0.38				FEE
255	BESS B. BRAEDEN	GOV'T LOT 1	0.447	1.10				FEE

PLAT BOUNDARY DATA				
POINT FROM	TO	DISTANCE		AZIMUTH
		FEET	METERS	
B1	B6002	1069.89	326.103	6°38'42"
B6002	B6003	195.20	59.497	89°14'07"
B6003	B4	1102.63	336.081	186°38'42"
B4	B5	19.70	6.005	278°52'57"
B5	B5905	1209.82	368.755	186°38'42"
B5905	B5904	175.23	53.410	283°44'45"
B5904	B1	1194.95	364.223	6°38'42"

MINNESOTA DEPARTMENT OF TRANSPORTATION
RIGHT OF WAY PLAT NO. 31-60

CONTROL SECTION NO. 3115(169=35-24)
IN THE EAST HALF OF SECTION 1, T. 53 N., R. 26 W.,
ITASCA COUNTY, MINNESOTA

THE COMMISSIONER OF TRANSPORTATION IS HEREBY DESIGNATING THE DEFINITE LOCATION OF TRUNK HIGHWAY NO. 169 FROM THE SOUTH ITASCA COUNTY LINE TO C.S.A.H. 67

as shown on this plat prepared by the State of Minnesota Department of Transportation is hereby certified as the official plat of that portion of said T.H. 169 within the designated portion of Section 1 and the Commissioner's Order therefor pursuant to Minnesota Statutes, section 160.085, section 160.14 subd. 1, section 161.16 subd. 2, and section 161.18.

It is further ordered that it is necessary to acquire all trees, shrubs, grass and herbage within the right of way of said Trunk Highway, and to keep and have exclusive control of the same.

It is further ordered that the right to erect and maintain temporary snow fences under Minnesota Statutes, Section 117.21 is hereby disclaimed on the land which will be involved.

Commissioner's Order No.	Location	Nature of Interest
83439	PLAT 31-60	Definite location, width, access, temporary easement and building removal easement.

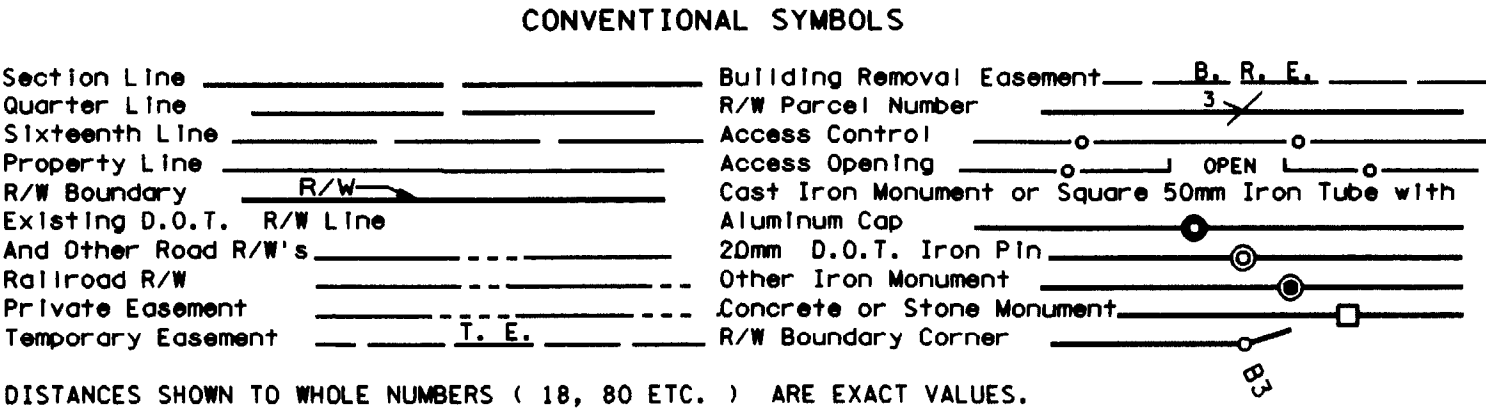
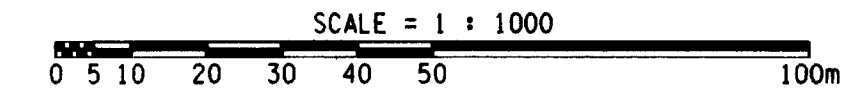
Certified by
James N. Denn
Commissioner of Transportation
James N. Denn 12-24-98
by Merritt Linzle Date
Director, Office of Land Management

I hereby certify that this plat was prepared by me or under my direct supervision and that I am a duly Registered Land Surveyor under the Laws of the State of Minnesota; that this plat meets requirements of Minnesota Statutes, section 160.085, section 160.14 subd. 1, section 161.16 subd. 2, and section 161.18; that parcel ownerships are correctly described and delineated on the plat; and that the proposed right-of-way boundary lines are correctly designated on the plat.

Certified by *Ronald J. Olson* 11/09 12/24/98
Registered Land Surveyor License No. Date
Office of Land Management

I hereby certify that this plat was surveyed by me or under my direct supervision and that I am a duly Registered Land Surveyor under the Laws of the State of Minnesota; that all measurements are correctly shown on this plat; that all monuments have been correctly placed as shown on this plat; and that certificates of location for the monumented public land survey corners as shown on this plat are on file in the County Recorder's Office.

Certified by *Bruce J. Adams* 2/107 1-4-99
Registered Land Surveyor License No. Date
M/DOT District Office



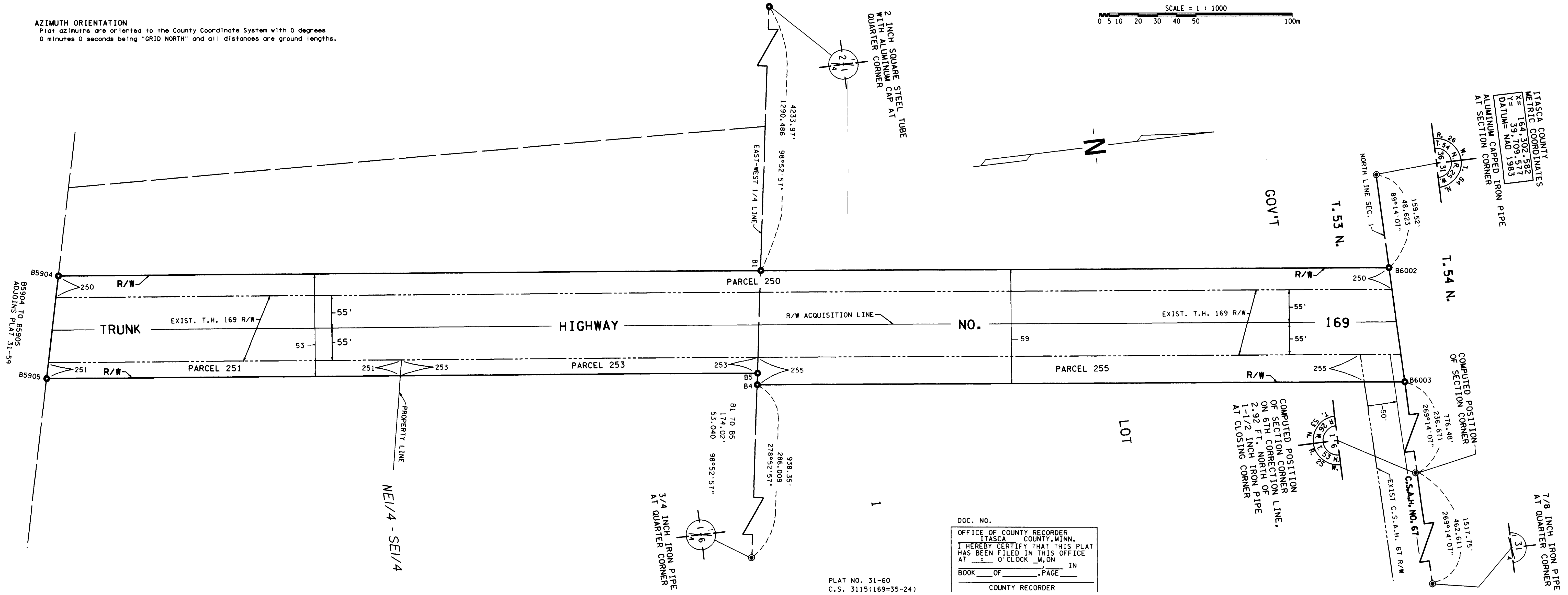
- SURVEY STANDARDS
- The plat values, azimuths, and distances are based on the County coordinate system.
 - The boundary monuments shown on this plat have been field checked for location. The standard deviation for the monument position is 30 millimeters.
 - The county coordinates shown on one monument are based on ties to national control monuments.
 - For details of this survey contact the Surveying Section at the Minnesota Department of Transportation, DULUTH, Name of District

METRIC/ENGLISH CONVERSION

All plat distances are in meters unless denoted as feet ('').
To convert meters to (U.S. Survey) feet, multiply the meters by 3.2808333.
To convert hectares to acres, multiply hectares by 2.471.
To convert square meters to square feet, multiply the square meters by 10.764.

AZIMUTH ORIENTATION

Plat azimuths are oriented to the County Coordinate System with 0 degrees 0 minutes 0 seconds being "GRID NORTH" and all distances are ground lengths.



DOC. NO.
OFFICE OF COUNTY RECORDER
ITASCA COUNTY, MINN.
I HEREBY CERTIFY THAT THIS PLAT
HAS BEEN FILED IN THIS OFFICE
AT _____ O'CLOCK _____ M. ON _____ IN
BOOK _____ OF _____ PAGE _____
COUNTY RECORDER

ITASCA COUNTY
METRIC COORDINATES
X = 164,302.582
Y = 59,709.577
DATUM = NAD 1983
ALUMINUM CAPPED IRON PIPE
AT SECTION CORNER

7/8 INCH IRON PIPE
AT QUARTER CORNER

COMPUTED POSITION
OF SECTION CORNER
CORRECTION LINE,
ON 67 FT. NORTH OF
2.92 INCH IRON PIPE
1-1/2 INCH IRON PIPE
AT CLOSING CORNER

PLAT NO. 31-60
C.S. 3115(169=35-24)