

MINNESOTA DEPARTMENT OF TRANSPORTATION RIGHT OF WAY PLAT NO. 31-187

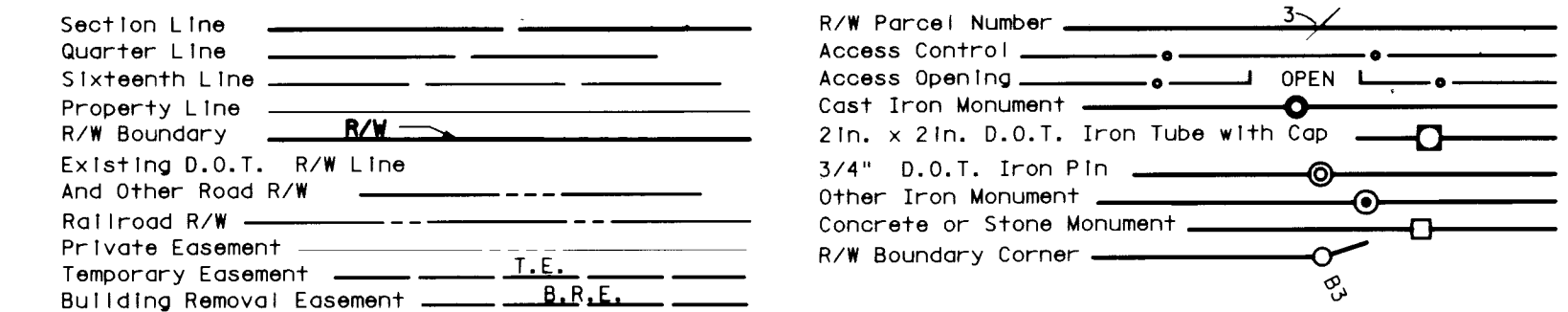
CONTROL SECTION NO. 3108 (38-196) 906
IN GOVERNMENT LOT 5 OF SECTION 28, T.59 N., R.26 W.,
IN THE WEST HALF OF THE SOUTHEAST QUARTER OF SECTION 28, T.59 N., R.26 W.,
ITASCA COUNTY, MINNESOTA

RIGHT OF WAY IN SECTION 28					
PARCEL	OWNER	LOCATION	NEW T.H.	TEMPORARY	PERMANENT
			R/W	EASEMENT	R/W
			ACRES	ACRES	INTEREST
			MORE OR LESS	MORE OR LESS	EXPIRES
62	UNITED STATES OF AMERICA	W1/2 SE1/4	8.65		EASEMENT
78	JON B. VAN NURDEN	GOV'T LOT 5	0.69		FEE
79	GEORGE A. BALOG	GOV'T LOT 5	0.04		FEE

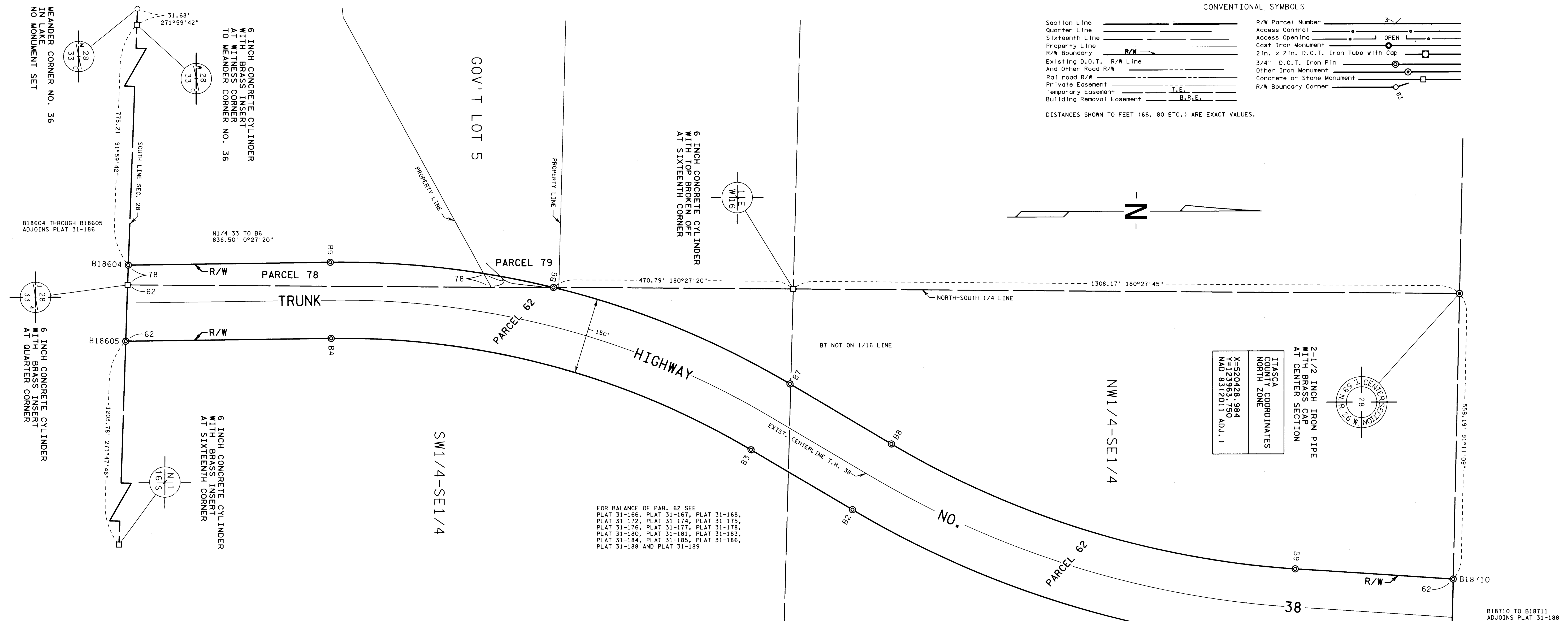
SURVEY STANDARDS

- The plat values, azimuths, and distances are based on the county coordinate survey system.
- The boundary monuments shown on this plat have been field checked for location. The standard deviation for the monument position is 0.10 foot.
- The county coordinates shown on one monument are based on ties to national control monuments.
- Certificates of Location have been filed at the County Recorder's Office and/or the County Surveyor's Office for the section corner monuments shown on this plat.
- For details of this survey contact the Surveying Section at the Minnesota Department of Transportation: DULUTH
Name of District

CONVENTIONAL SYMBOLS



DISTANCES SHOWN TO FEET (66, 80 ETC.) ARE EXACT VALUES.



ITASCA COUNTY COORDINATES
NORTH ZONE
X=520428.984
Y=123963.750
MAD 83(2011 ADJ.)

FOR BALANCE OF PAR. 62 SEE
PLAT 31-166, PLAT 31-167, PLAT 31-168,
PLAT 31-172, PLAT 31-174, PLAT 31-175,
PLAT 31-176, PLAT 31-177, PLAT 31-178,
PLAT 31-180, PLAT 31-181, PLAT 31-183,
PLAT 31-184, PLAT 31-185, PLAT 31-186,
PLAT 31-188 AND PLAT 31-189

THE COMMISSIONER OF TRANSPORTATION IS HEREBY DESIGNATING THE DEFINITE LOCATION OF TRUNK HIGHWAY NO. 38 FROM 0.2 MILES NORTH OF THE JUNCTION WITH COUNTY STATE AID HIGHWAY NO. 19 TO 1.5 MILES SOUTHEAST OF MARCELL

as shown on this plat prepared by the State of Minnesota Department of Transportation is hereby certified as the official plat of that portion of said T.H. 38 within the designated portion of Section 28 and the Commissioner's Order therefor, pursuant to Minnesota Statutes, Section 160.085, Section 160.14 subd. 1, Section 161.16 subd. 2, and Section 161.18.

It is further ordered that it is necessary to acquire all trees, shrubs, grass and herbage within the right of way of said Trunk Highway, and to keep and have the exclusive control of the same.

Commissioner's Order No.	Location	Nature of Interest
96011	PLAT 31-187	Definite location, width, access and temporary easement.

Certified by: *Charles A. Zelle*
Commissioner of Transportation
Date: *9 June 17*
by Peter W. Jenkins, Assistant Director, Office of Land Management

I hereby certify that this plat was surveyed and prepared by me or under my direct supervision and that I am a duly Licensed Land Surveyor under the Laws of the State of Minnesota; that all measurements are correctly shown on this plat; that all monuments have been correctly placed as shown on this plat; that Certificates of Location for the monumented Public Land Survey corners as shown on this plat are on file in the County Recorder's Office (if required under Minnesota Statutes, Section 160.15) and/or the County Surveyor's Office; that this plat meets the requirements of Minnesota Statutes, Section 160.085, Section 160.14 subd. 1, Section 161.16 subd. 2, and Section 161.18; that the parcel ownerships are correctly described and delineated on the plat; and that the proposed Right of Way boundary lines are correctly designated on the plat.

Certified by: *K.S. Sutherland* License No. 50807 Date: *6-14-17*
Kavlin M. Sutherland, MNDOT District Office

PLAT BOUNDARY DATA				
FROM	TO	DISTANCE(FT)	AZIMUTH	
B1	B2	C 899.75	197°10'05"	
A 908.03	R 1939.00	DEL 26°49'53"	RT	
B2	B3	231.74	210°35'02"	
B3	B4	C 853.51	194°56'13"	
A 864.22	R 1582.29	DEL 31°17'38"	LT	
B4	B18605	403.52	179°17'24"	
B18605	N1/4 33	110.92	271°47'46"	
N1/4 33	B18604	39.23	271°59'42"	
B18604	B5	396.81	359°17'24"	
B5	B6	C 441.25	6°36'26"	
A 442.45	R 1732.29	DEL 14°38'03"	RT	
B6	B7	C 501.92	22°15'14"	
A 503.69	R 1732.29	DEL 16°39'35"	RT	
B7	B8	231.74	30°35'02"	
B8	B9	C 830.15	17°10'05"	
A 837.78	R 1789.00	DEL 26°49'53"	LT	
B9	B18710	310.80	3°45'09"	
B18710	B18711	150.15	91°11'09"	
B18711	B1	317.53	183°45'09"	

AZIMUTH ORIENTATION AND GRID CONVERSION
Plat azimuths are oriented to the County Coordinate System with 0 degrees 0 minutes 0 seconds being "GRID NORTH". Plat distances are ground lengths.



DOC. NO. *A000713677*
OFFICE OF COUNTY RECORDER
ITASCA COUNTY, MINN
I HEREBY CERTIFY THAT THIS PLAT
HAS BEEN FILED IN THIS OFFICE
ON *JUNE 15*, 2017, AT *3:24 PM*
IN CAB. NO. *237*
Cindy Stewich
COUNTY RECORDER

PLAT NO. 31-187
C.S. 3108 (38-196) 906

C-237