

MINNESOTA DEPARTMENT OF TRANSPORTATION  
RIGHT OF WAY PLAT NO. 31-57

CONTROL SECTION NO. 3115(169-35-24)  
IN THE SOUTHEAST QUARTER OF SECTION 12, T. 53 N., R. 26 W.,  
IN THE NORTHEAST QUARTER OF SECTION 13, T. 53 N., R. 26 W.,  
ITASCA COUNTY, MINNESOTA

THE COMMISSIONER OF TRANSPORTATION IS HEREBY DESIGNATING THE DEFINITE  
LOCATION OF TRUNK HIGHWAY NO. 169 FROM THE SOUTH ITASCA COUNTY  
LINE TO C.S.A.H. 67

as shown on this plat prepared by the State of Minnesota Department of Transportation is hereby certified as  
the official plat of that portion of said T.H. 169 within the designated portion of Sections 12 & 13  
and the Commissioner's Order therefor pursuant to Minnesota Statutes, section 160.085, section  
160.14 subd. 1, section 161.16 subd. 2, and section 161.18.

It is further ordered that it is necessary to acquire all trees, shrubs, grass and herbage within the  
right of way of said Trunk Highway, and to keep and have exclusive control of the same.

It is further ordered that the right to erect and maintain temporary snow fences under Minnesota Statutes,  
Section 117.12 is hereby disclaimed on the land which will be involved.

Commissioner's Order No.	Location	Nature of Interest
83436	PLAT 31-57	Definite location, width, access, temporary ease- ment and building removal easement.

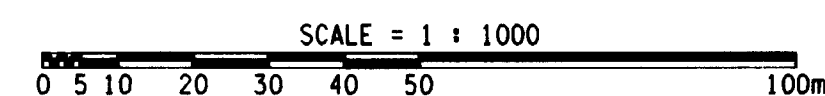
Certified by  
*James N. Denn* 12-21-98  
Commissioner of Transportation  
by *Michael J. Hartzel*  
Director, Office of Land Management

I hereby certify that this plat was prepared by me or under my direct supervision and that I am a duly  
Registered Land Surveyor under the Laws of the State of Minnesota; that this plat meets requirements  
of Minnesota Statutes, section 160.085, section 160.14 subd. 1, section 161.16 subd. 2, and section 161.18,  
that parcel ownerships are correctly described and delineated on the plat; and that the proposed right-of-way  
boundary lines are correctly designated on the plat.

Certified by *Ronald L. Olson* 11/09 12/21/98  
Registered Land Surveyor  
Office of Land Management

I hereby certify that this plat was surveyed by me or under my direct supervision and that I am a duly  
Registered Land Surveyor under the Laws of the State of Minnesota; that all measurements are correctly  
shown on this plat; that all monuments have been correctly placed as shown on this plat; and that  
Certificates of Location for the monumented public land survey corners as shown on this plat are on  
file in the County Recorder's Office.

Certified by *Bruce Yaden* 2/107 1-4-99  
Registered Land Surveyor  
M/DOT District Office



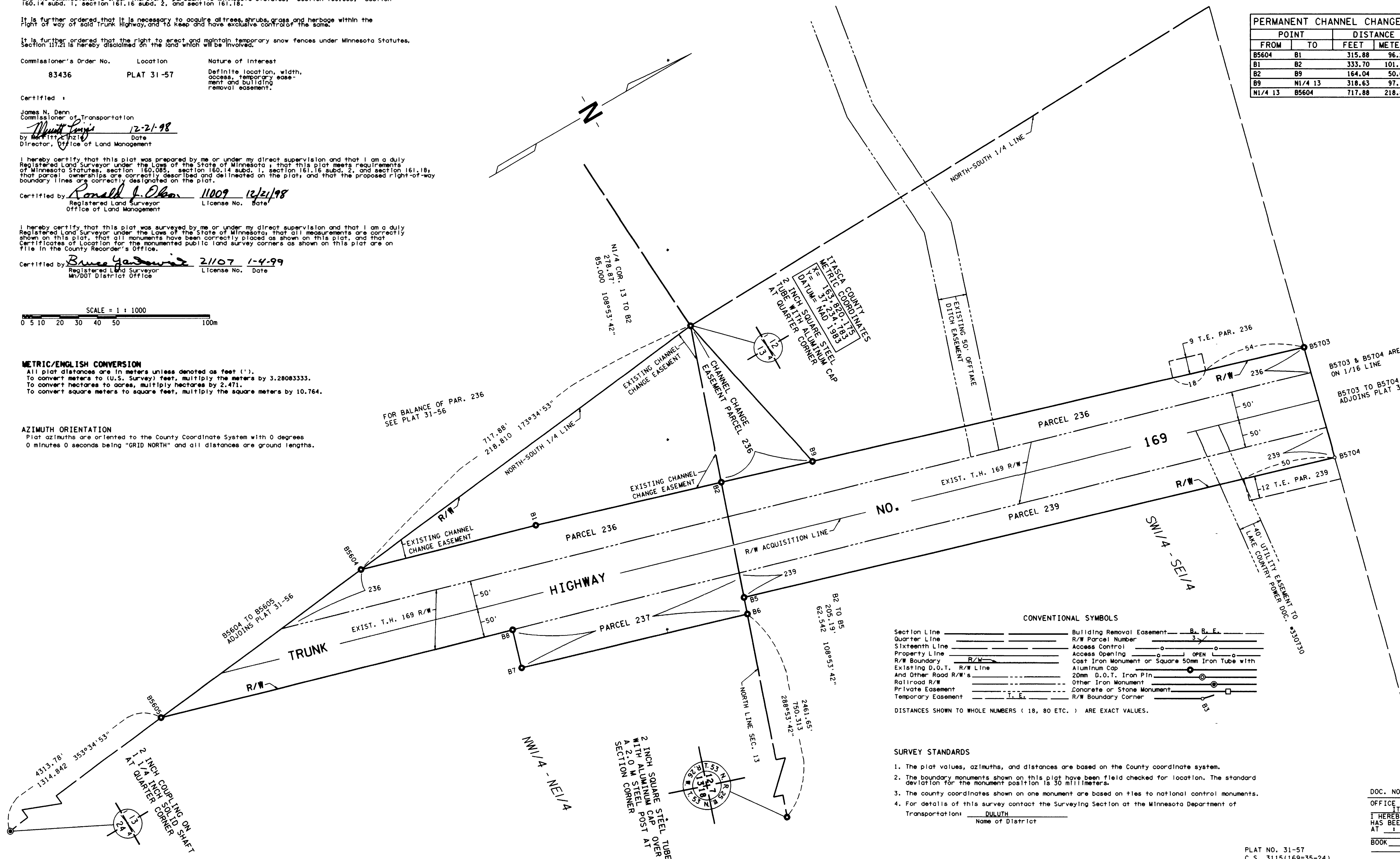
**METRIC/ENGLISH CONVERSION**  
All plat distances are in meters unless denoted as feet (').  
To convert meters to (U.S. Survey) feet, multiply the meters by 3.28083333.  
To convert hectares to acres, multiply hectares by 2.471.  
To convert square meters to square feet, multiply the square meters by 10.764.

**AZIMUTH ORIENTATION**  
Plat azimuths are oriented to the County Coordinate System with 0 degrees  
0 minutes 0 seconds being "GRID NORTH" and all distances are ground lengths.

PARCEL	OWNER	LOCATION	NEW T.H. R/W		TEMPORARY EASEMENT		PERMANENT CHANNEL CHANGE EASEMENT		EASEMENT EXPIRES ON	PERMANENT R/W INTEREST
			HECTARES (MORE OR LESS)	ACRES	HECTARES (MORE OR LESS)	ACRES	HECTARES (MORE OR LESS)	ACRES		
239	JOSEPH L. ROTHSTEIN	SW1/4SE1/4	0.482	1.19	0.060	0.15			12-01-04	FEE
RIGHT OF WAY IN SECTION 13										
237	BLANDIN PAPER COMPANY	NW1/4NE1/4	0.267	0.66						FEE
RIGHT OF WAY IN SECTIONS 12 & 13										
236	ARTHUR E. ELLING	SW1/4SE1/4 SECTION 12 NW1/4NE1/4 SECTION 13	0.966	2.39	0.016	0.04	0.212	0.52	12-01-04	FEE EASE.

PLAT BOUNDARY DATA		
POINT	DISTANCE	AZIMUTH
FROM	TO	FEET METERS
B5604	B1	315.88 96.279 15°53'09"
B1	B2	333.70 101.713 16°55'16"
B2	B9	164.04 50.000 16°55'16"
B9	B5703	884.56 269.614 16°55'16"
B5703	B5704	199.94 60.941 104°31'03"
B5704	B5	1064.06 324.328 196°38'08"
B5	B6	29.55 9.007 108°53'42"
B6	B7	406.47 123.891 196°38'08"
B7	B8	68.37 20.841 286°38'08"
B8	B5605	634.37 193.357 196°01'36"
B5605	B5604	435.27 132.671 353°34'53"

PERMANENT CHANNEL CHANGE EASEMENT		
POINT	DISTANCE	AZIMUTH
FROM	TO	FEET METERS
B5604	B1	315.88 96.279 15°53'09"
B1	B2	333.70 101.713 16°55'16"
B2	B9	164.04 50.000 16°55'16"
B9	N1/4 13	318.63 97.120 257°55'46"
N1/4 13	B5604	717.88 218.810 173°34'53"



**CONVENTIONAL SYMBOLS**

Section Line	Building Removal Easement	B. R. E.
Quarter Line	R/W Parcel Number	3
Sixteenth Line	Access Control	o
Property Line	Access Opening	o
R/W Boundary	Cast Iron Monument or Square 50mm Iron Tube with Aluminum Cap	o
Existing D.O.T. R/W Line	20mm D.O.T. Iron Pin	o
And Other Road R/W's	Other Iron Monument	o
Railroad R/W	Concrete or Stone Monument	o
Private Easement	R/W Boundary Corner	o
Temporary Easement		

DISTANCES SHOWN TO WHOLE NUMBERS ( 18, 80 ETC. ) ARE EXACT VALUES.

- SURVEY STANDARDS**
- The plat values, azimuths, and distances are based on the County coordinate system.
  - The boundary monuments shown on this plat have been field checked for location. The standard deviation for the monument position is 30 millimeters.
  - The county coordinates shown on one monument are based on national control monuments.
  - For details of this survey contact the Surveying Section at the Minnesota Department of Transportation: DULUTH Name of District

DOC. NO.  
OFFICE OF COUNTY RECORDER  
ITASCA COUNTY, MINN.  
I HEREBY CERTIFY THAT THIS PLAT  
HAS BEEN FILED IN THIS OFFICE  
AT \_\_\_\_\_ O'CLOCK \_\_\_\_\_ M. ON \_\_\_\_\_  
IN \_\_\_\_\_  
BOOK \_\_\_\_\_ OF \_\_\_\_\_ PAGE \_\_\_\_\_  
COUNTY RECORDER