

MINNESOTA DEPARTMENT OF TRANSPORTATION
RIGHT OF WAY PLAT NO. 31-29

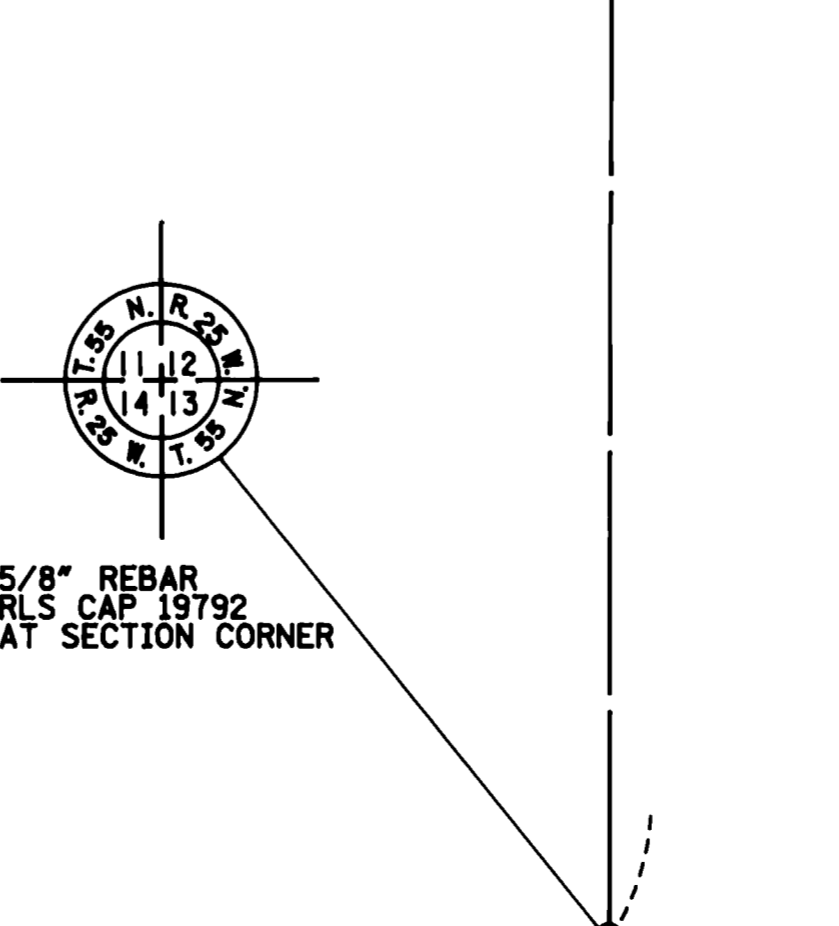
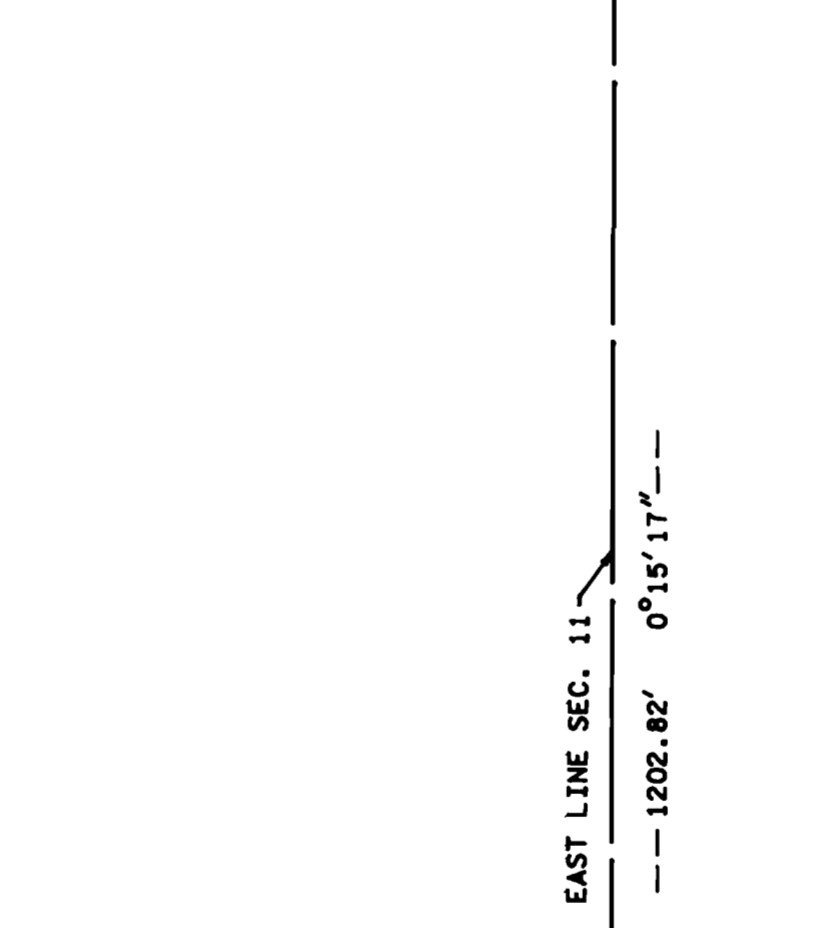
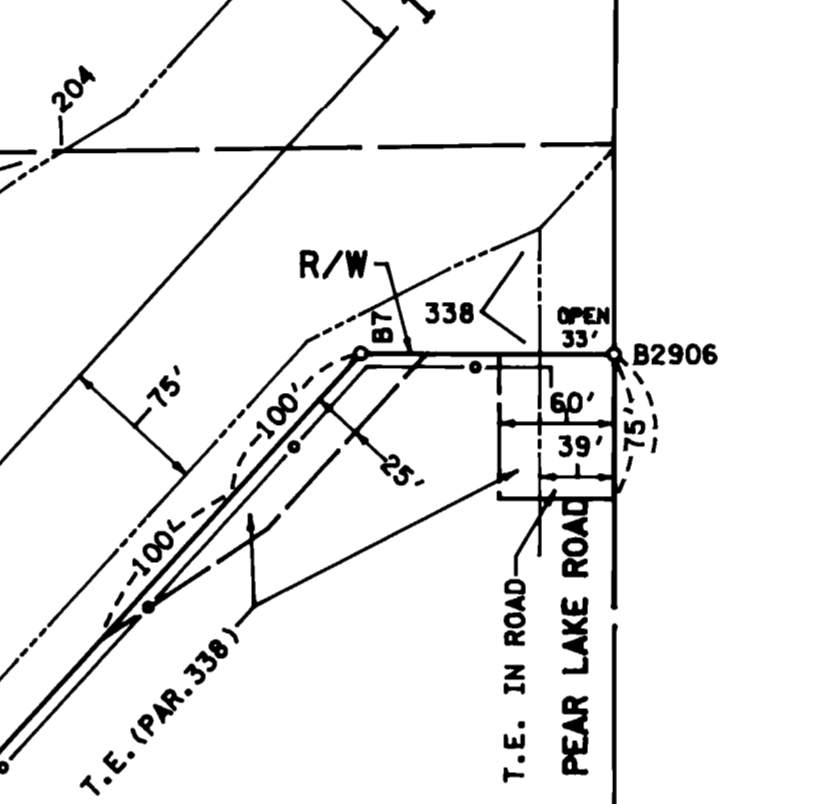
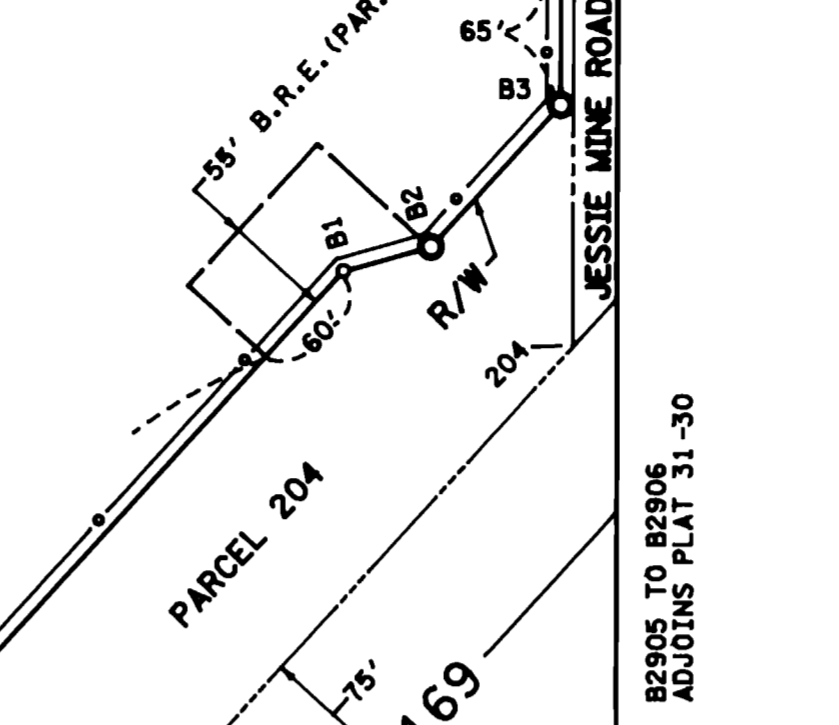
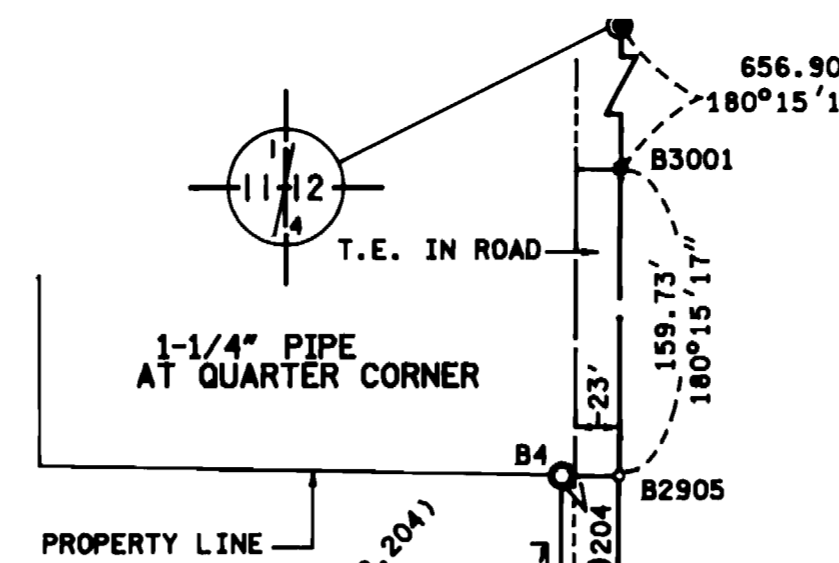
STATE PROJECT NO. 3116(169=35)901
STATE PROJECT NO. 3116(169=35)904
IN THE SOUTHEAST QUARTER OF SECTION 11, T. 55 N., R. 25 W.,
ITASCA COUNTY, MINNESOTA

S.P. 3116(169=35)901 RIGHT OF WAY IN SECTION 11							
PARCEL	OWNER	LOCATION	TOWNSHIP'S CERTIFICATE NO.	NEW T.H. R/W ACRES (MORE OR LESS)	TEMPORARY EASEMENT ACRES (MORE OR LESS)	BUILDING REMOVAL EASEMENT	PERMANENT R/W INTEREST
232B	UNIVERSITY OF MINNESOTA	SW1/4SE1/4			0.27		12-1-97
234	BURLINGTON NORTHERN RAILROAD COMPANY	SW1/4SE1/4		0.16	1.67		12-1-97 EASE.
235	LLEWELLYN A. REESE	S1/2SE1/4		3.42	0.53		12-1-97 FEE
236	HAROLD A. JOHNSON	SE1/4SE1/4		0.03	0.07		12-1-97 FEE
337	WAYNE V. HEINEN	SE1/4SE1/4		0.08	0.27		12-1-97 FEE
337A	BRUCE M. REID	SE1/4SE1/4		0.20	0.16		12-1-97 FEE
338	OSCAR S. JACOBSON	SE1/4SE1/4		0.62	0.16		12-1-97 FEE
S.P. 3116(169=35)904							
204	STEVEN L. SKADSEM	NE1/4SE1/4		1.21		0.13	6-26-94 FEE

NOTE: TEMPORARY EASEMENTS IN PUBLIC ROADS EXPIRE ON 12-1-97.

NE1/4-SE1/4

PLAT BOUNDARY DATA		
POINT	DISTANCE	AZIMUTH
B2815-B1	2220.23'	42°29'29"
B1-B2	47.17'	74°29'50"
B2-B3	100.00'	42°29'29"
B3-B4	99.59'	0°15'17"
B4-B2905	30.00'	90°15'17"
B2905-B2906	606.19'	180°15'17"
B2906-B7	132.03'	270°15'17"
B7-B2816	1646.32'	222°29'29"
B2816-B2815	396.40'	269°30'40"



THE COMMISSIONER OF TRANSPORTATION IS HEREBY DESIGNATING THE DEFINITE LOCATION OF TRUNK HIGHWAY NO. 169 FROM THE JUNCTION OF COUNTY ROAD B TO 1.25 MILES NORTH.

As shown on this plat prepared by the State of Minnesota Department of Transportation is hereby certified as the official plat of that portion of said T.H. 169 within the designated portion of Section 11 and the Commissioner's Order therefor, pursuant to Minnesota Statutes, section 161.16 subd. 2, section 160.14 subd. 1, section 160.085, and section 161.18.

Commissioner's Order No.	Location	Nature of Interest
77900	PLATS 31-28 AND 31-29	Definite location, width, access, temporary easement and building removal easement.

Recommended for Certification - Certified -

James W. Dinnel
Commissioner of Transportation
Date 2-5-92
by E.E. Orved
Assistant Commissioner of Transportation
Date 2-5-92

I hereby certify that this plat was prepared by me or under my direct supervision and that I am a duly Registered Land Surveyor under the Laws of the State of Minnesota, that this plat meets requirements of Minnesota Statutes, section 161.16, subd. 2, section 160.14, subd. 1, section 160.085, and section 161.18; that parcel ownerships are correctly described and delineated on the plat; and that the proposed right-of-way boundary lines are correctly designated on the plat.

Certified by R. E. Olson 11933 2-5-92
Registered Land Surveyor Reg. No. Date
Office of Right of Way & Surveys

I hereby certify that this plat was surveyed by me or under my direct supervision and that I am a duly Registered Land Surveyor under the Laws of the State of Minnesota, that all measurements are correctly shown on this plat, and that all monuments have been correctly placed as shown on this plat.

Certified by R. E. Olson 12260 2-25-92
Registered Land Surveyor Reg. No. Date
Mn/DOT District Office

SURVEY STANDARDS

- The plat values, azimuths, and distances are based on the project control survey system.
- The boundary monuments shown on this plat have been field checked for location. The standard deviation for the monument position is 0.10 feet.
- The county coordinates shown on one monument are based on ties to national control monuments.
- Certificates of Location have been filed at the County Recorder's Office and/or the County Surveyor's Office for the section corner monuments shown on this plat.
- For details of this survey contact the Surveying and Mapping Section at the Minnesota Department of Transportation, DULUTH, Name of District

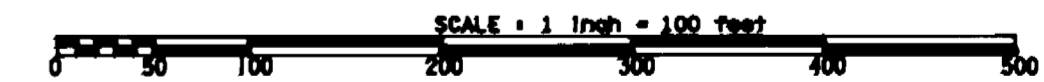
AZIMUTH ORIENTATION AND GRID CONVERSION

Plat azimuths are oriented to the County Coordinate System with 0 degrees 0 minutes 0 seconds being 'GRID NORTH'. Plat distances are ground lengths.

CONVENTIONAL SYMBOLS

Section Line	Building Removal Easement	B. R. E.
Quarter Line	R/W Parcel Number	3
Sixteenth Line	Access Control	
Property Line	Access Opening	open
R/W Boundary	Cast Iron Monument or 2"x2" D.O.T. Iron Pipe with	
Existing D.O.T. R/W Line	Aluminum Cap	
And Other Road R/W's	3/4" D.O.T. Iron Pin	
Railroad R/W	Other Iron Monument	
Private Easement	Concrete or Stone Monument	
Temporary Easement	R/W Boundary Corner	

DISTANCES SHOWN TO FEET (66, 80 ETC.) ARE EXTRINSIC VALUES.



SW1/4-SE1/4

SE1/4-SE1/4

FOR BALANCE OF PAR. 234 & 235 SEE PLAT 31-28

ITASCA COUNTY COORDINATES

X = 562,849.72
Y = 183,017.92
DATUM = NAD 1983

2 INCH PIPE AT QUARTER CORNER

FOR BALANCE OF PAR. 236 & 337 SEE PLAT 31-28

DOC. NO. 428596

OFFICE OF COUNTY RECORDER
ITASCA COUNTY, MINN.

I HEREBY CERTIFY THAT THIS PLAT HAS BEEN FILED IN THIS OFFICE AT 2:00 P.M. ON 2-5-92

BOOK 198 IN PAGE 19

PLAT NO. 31-29
S.P. 3116(169=35)901