

# MINNESOTA DEPARTMENT OF TRANSPORTATION RIGHT OF WAY PLAT No. 31-17

STATE PROJECT NO. 3115(169=35-22B)

IN THE SOUTHEAST QUARTER OF SECTION 32, T.55N., R.25W. AND  
THE SOUTHWEST QUARTER OF SECTION 33, T.55N., R.25W.  
ITASCA COUNTY, MINNESOTA

THE COMMISSIONER OF TRANSPORTATION IS HEREBY DESIGNATING THE DEFINITE  
LOCATION OF TRUNK HIGHWAY NO. 169 FROM 2.5 MILES TO 3.5 MILES SOUTH  
OF T.H.2.

As shown on this plat prepared by the State of Minnesota Department of Transportation is hereby certified as  
the official plat of that portion of said T.H. 169 within the designated portion of Sections 32 and 33  
and the Commissioner's Order therefor, pursuant to Minnesota Statutes 1969, section 161.16 subd. 2, section  
160.14 subd. 1, and section 160.085 and Minnesota Laws of 1976, Chapter 156.

Commissioner's Order No.	Location	Nature of Interest
62951	Plats 31-17 to 31-18	Definite location, width, access, temporary ease- ment and building removal easement.
Recommended for Certification:	Certified:	

Richard P. Braun  
Commissioner of Transportation  
Date 7/17/79  
by F. C. Marshall  
Assistant Commissioner of Transportation  
Date 7/17/79

I hereby certify that this plat was prepared by me or under my direct supervision and that I am a duly  
Registered Land Surveyor under the Laws of the State of Minnesota; that this plat meets requirements  
of Minnesota Statutes 1969, Section 161.16, Subdivision 2, Section 160.14, Subdivision 1 and Section  
160.085, that parcel ownerships are correctly described and delineated on the plat, and that the  
proposed right-of-way boundary lines are correctly designated on the plat.

Certified by John E. Sullivan 10460 7-9-79  
Registered Land Surveyor Reg. No. Date  
Office of Surveying & Mapping

I hereby certify that this plat was surveyed by me or under my direct supervision and that I am a duly  
Registered Land Surveyor under Laws of the State of Minnesota, that all measurements are correctly  
shown on this plat; and that all monuments have been correctly placed as shown on this plat.

Certified by R.W. Thornton 11562 7-11-79  
Registered Land Surveyor Reg. No. Date  
Mn/DOT District Office

### SURVEY STANDARDS

- The plat values, azimuths and distances, are based on the project control survey system.
- The boundary monuments shown on this plat have been field checked for location. The standard deviation for the monument positions is 0.1 ft.
- The state plane coordinates shown on one monument are based on ties to national control monuments.
- Certificates of Location have been filed at the County Recorder's Office and/or the County Surveyor's Office for the section corner monuments shown on this plat.
- For details of this survey contact the Surveying and Mapping Section at the Minnesota Department of Transportation DELUTH Name of District

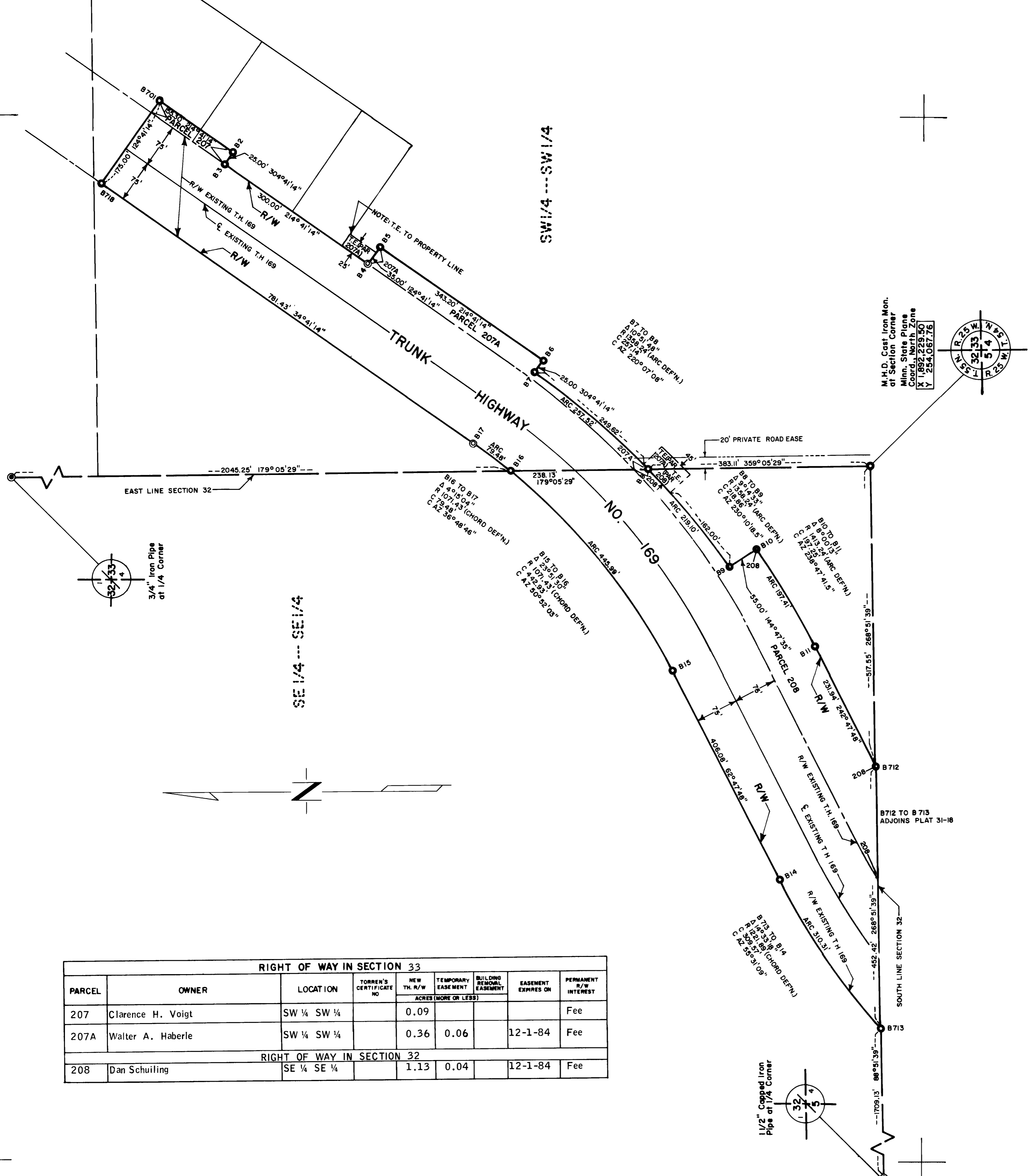
### AZIMUTH ORIENTATION AND GRID CONVERSION

Plat azimuths are oriented to Minnesota State Plane Coordinate System with 0 degrees  
0 minutes 0 seconds being "GRID NORTH".  
Plat distances are ground lengths and can be converted to Minnesota State Plane Grid  
lengths by multiplying Plat distances by 0.9999087

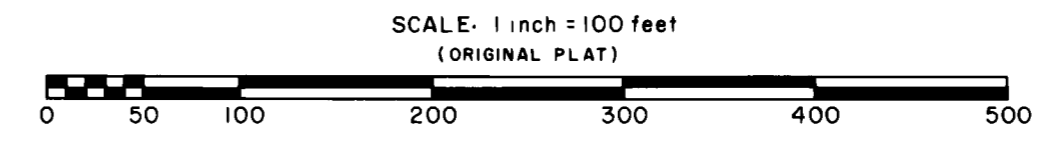
### CONVENTIONAL SYMBOLS

Section Line	Building Removal Easement	B.R.E.
Quarter Line	R/W Parcel Number	3
Sixteenth Line	Access Control	o
Property Line	Access Opening	o open
R/W Boundary	Cost Iron Monument or 1/2" M.H.D. Iron Pipe with Aluminum Cap	o
Existing M.H.D. R/W Line	3/4" M.H.D. Iron Pin	o
Other Road R/W's	Other Iron Monuments	o
Railroad R/W	Concrete or Stone Monument	o
Private Easement	R/W Boundary Corner	o
Temporary Easement		

DISTANCES SHOWN TO FEET (66, 80 ETC.) ARE EXACT EXTRINSIC VALUES.



RIGHT OF WAY IN SECTION 33							
PARCEL	OWNER	LOCATION	TORREN'S CERTIFICATE NO.	NEW TH. R/W	TEMPORARY EASEMENT	BUILDING REMOVAL EASEMENT	PERMANENT R/W INTEREST
				ACRES (MORE OR LESS)			
207	Clarence H. Voigt	SW 1/4 SW 1/4		0.09			Fee
207A	Walter A. Haberle	SW 1/4 SW 1/4		0.36	0.06		Fee
RIGHT OF WAY IN SECTION 32							
208	Dan Schuiling	SE 1/4 SE 1/4		1.13	0.04		Fee



DOC. NO. 334371

OFFICE OF COUNTY RECORDER  
ITASCA COUNTY, MINN.

I HEREBY CERTIFY THAT THIS PLAT  
HAS BEEN FILED IN THIS OFFICE  
AT 2:10 O'CLOCK P.M. ON  
August 8, 1979 IN  
BOOK OF \_\_\_\_\_ PAGE \_\_\_\_\_  
David L. Buxton  
COUNTY RECORDER