

THE COMMISSIONER OF TRANSPORTATION IS HEREBY DESIGNATING THE DEFINITE LOCATION OF TRUNK HIGHWAY NO. 2 & 169 FROM JCT. T.H. 38 (THIRD AVENUE N.W.) TO 0.3 MILES EAST OF JCT. T.H. 169 (TENTH AVENUE N.E.) IN GRAND RAPIDS

as shown on this plat prepared by the State of Minnesota Department of Transportation is hereby certified as the official plat of that portion of said T.H. 2 & T.H. 169 within the designated portion of Section 21 and the Commissioner's Order therefor, pursuant to Minnesota Statutes, Section 160.085, Section 160.14 subd. 1, Section 161.16 subd. 2, and Section 161.18.

It is further ordered that it is necessary to acquire all trees, shrubs, grass and herbage within the right of way of said Trunk Highway, and to keep and have the exclusive control of the same.

Table with 3 columns: Commissioner's Order No., Location, Nature of Interest. Row 1: 89267, 31-132, Definite location, width, access, temporary easement and building removal easement.

Certified by Carol Molnau, Commissioner of Transportation, dated 8/25/06, by Michael L. Toray, Assistant District Transportation Engineer.

I hereby certify that this plat was surveyed and prepared by me or under my direct supervision and that I am a duly Licensed Land Surveyor under the Laws of the State of Minnesota, that all measurements are correctly shown on this plat; that all monuments have been correctly placed as shown on this plat; that Certificates of Location for the monumented Public Land Survey corners as shown on this plat are on file in the County Recorder's Office...

Certified by Bruce Yankowick, Mn/DOT District Office, License No. 21107, Date 8-25-06.

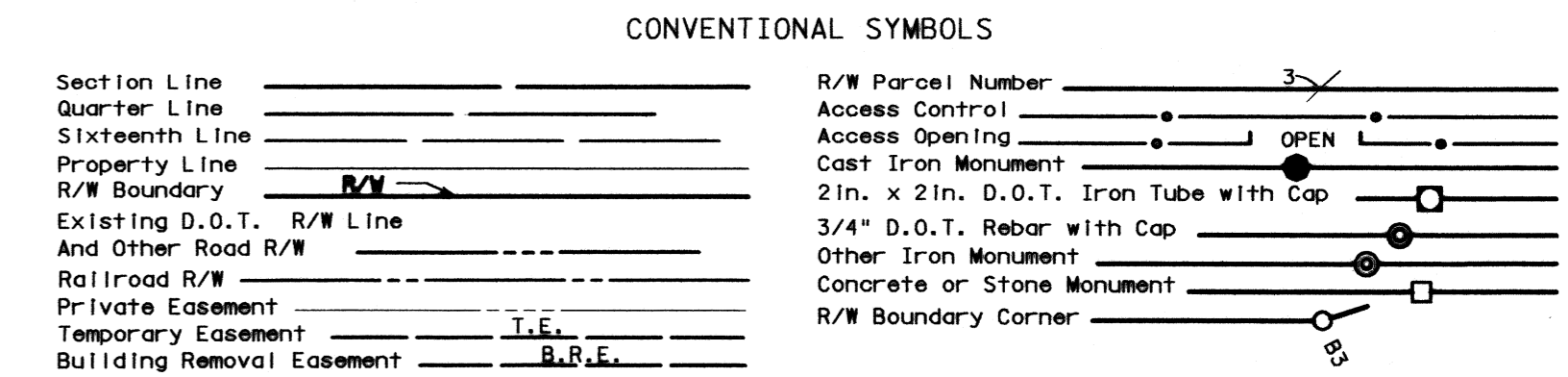
Table: RIGHT OF WAY IN GRAND RAPIDS FIRST DIVISION C.S. 3104(2=8)901. Columns: PARCEL, OWNER, LOCATION, NEW T.H. R/W, TEMPORARY EASEMENT, PERMANENT R/W INTEREST.

Table: RIGHT OF WAY IN GRAND RAPIDS FIRST DIVISION C.S. 3116(169=35)901. Columns: PARCEL, OWNER, LOCATION, NEW T.H. R/W, TEMPORARY EASEMENT, PERMANENT R/W INTEREST.

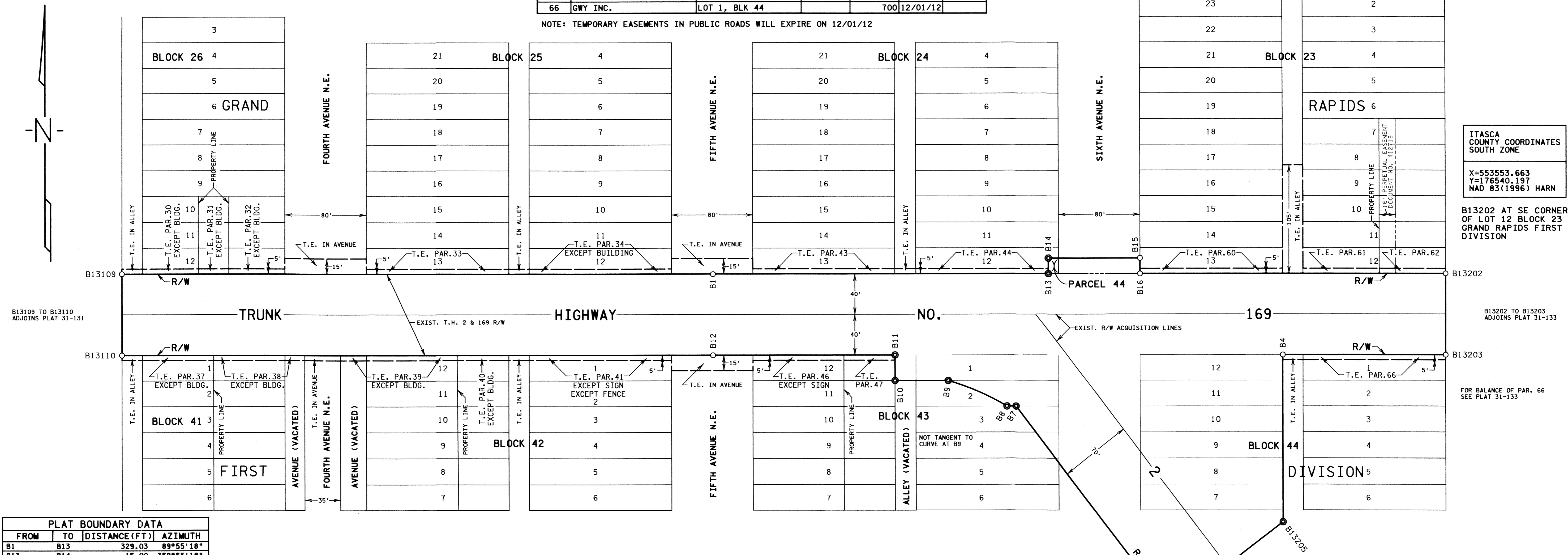
NOTE: TEMPORARY EASEMENTS IN PUBLIC ROADS WILL EXPIRE ON 12/01/12

MINNESOTA DEPARTMENT OF TRANSPORTATION RIGHT OF WAY PLAT NO. 31-132

CONTROL SECTION NO. 3104 (2=8)901 CONTROL SECTION NO. 3116 (169=35)901 IN THE NORTHEAST QUARTER OF THE NORTHWEST QUARTER OF SECTION 21, T. 55 N., R. 25 W., IN THE NORTHWEST QUARTER OF THE NORTHEAST QUARTER OF SECTION 21, T. 55 N., R. 25 W., ITASCA COUNTY, MINNESOTA



DISTANCES SHOWN TO FEET (66, 80 ETC.) ARE EXACT VALUES.



ITASCA COUNTY COORDINATES SOUTH ZONE X=553553.663 Y=176540.197 NAD 83(1996) HARN

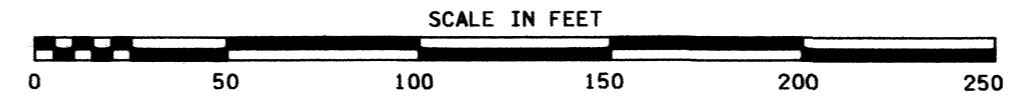
B13202 AT SE CORNER OF LOT 12 BLOCK 23 GRAND RAPIDS FIRST DIVISION

B13202 TO B13203 ADJOINS PLAT 31-133

FOR BALANCE OF PAR. 66 SEE PLAT 31-135

PLAT BOUNDARY DATA table with columns: FROM, TO, DISTANCE(FT), AZIMUTH. Lists boundary points B1 through B13109 with distances and azimuths.

SURVEY STANDARDS 1. The plat values, azimuths, and distances are based on the County coordinate system. 2. The boundary monuments shown on this plat have been field checked for location. The standard deviation for the monument position is 0.10 foot. 3. The county coordinates shown on one monument are based on ties to national control monuments. 4. For details of this survey contact the Surveying Section at the Minnesota Department of Transportation.



AZIMUTH ORIENTATION AND GRID CONVERSION Plat azimuths are oriented to the County Coordinate System with 0 degrees 0 minutes 0 seconds being "GRID NORTH". Plat distances are ground lengths.

PLAT NO. 31-132 C.S. 3104(2=8)901 C.S. 3116(169=35)901

DOC. NO. OFFICE OF COUNTY RECORDER ITASCA COUNTY, MN I HEREBY CERTIFY THAT THIS PLAT HAS BEEN FILED IN THIS OFFICE ON 20 AT NO. COUNTY RECORDER