

THE COMMISSIONER OF TRANSPORTATION IS HEREBY DESIGNATING THE DEFINITE LOCATION OF TRUNK HIGHWAY NO. 169 FROM 10TH AVENUE N.E. IN THE CITY OF GRAND RAPIDS TO THE JUNCTION OF COUNTY ROAD B.

As shown on this plat prepared by the State of Minnesota Department of Transportation is hereby certified as the official plat of that portion of said T.H. 169 within the designated portion of Sections 15, 21 & 22 and the Commissioner's Order therefor pursuant to Minnesota Statutes, section 161.16 subd. 2, section 160.14 subd. 1, section 160.06, and section 161.16.

Commissioner's Order No.	Location	Nature of Interest
77899	PLATS 31-26 AND 31-27	Definite location, width, access, temporary easement and building removal easement.

Recommended for Certification - Certified -

James N. Dann  
 Commissioner of Transportation  
 B.J. Dillner  
 Director of Right of Way & Surveys  
 Date 1-23-92  
 Date 1-23-92  
 Assistant Commissioner of Transportation

I hereby certify that this plat was prepared by me or under my direct supervision and that I am a duly Registered Land Surveyor under the Laws of the State of Minnesota; that this plat meets the requirements of Minnesota Statutes, section 161.16, Subd. 2, section 160.14, Subd. 1, section 160.06, and section 161.16; that parcel ownerships are correctly described and delineated on the plat; and that the proposed Right-of-way boundary lines are correctly designated on the plat.

Certified by R. E. Olson  
 Registered Land Surveyor Reg. No. 1933  
 Date 1-22-92  
 Office of Right of Way & Surveys

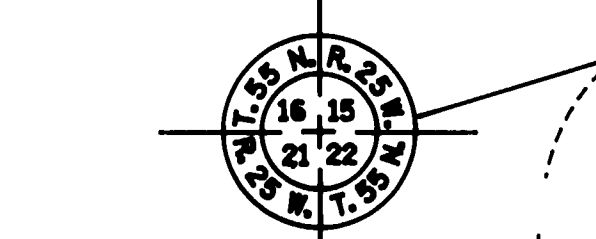
I hereby certify that this plat was surveyed by me or under my direct supervision and that I am a duly Registered Land Surveyor under the Laws of the State of Minnesota; that all measurements are correctly shown on this plat; and that all monuments have been correctly placed as shown on this plat.

Certified by R. E. Olson  
 Registered Land Surveyor Reg. No. 17260  
 Date 8-28-92  
 M/DOT District Office

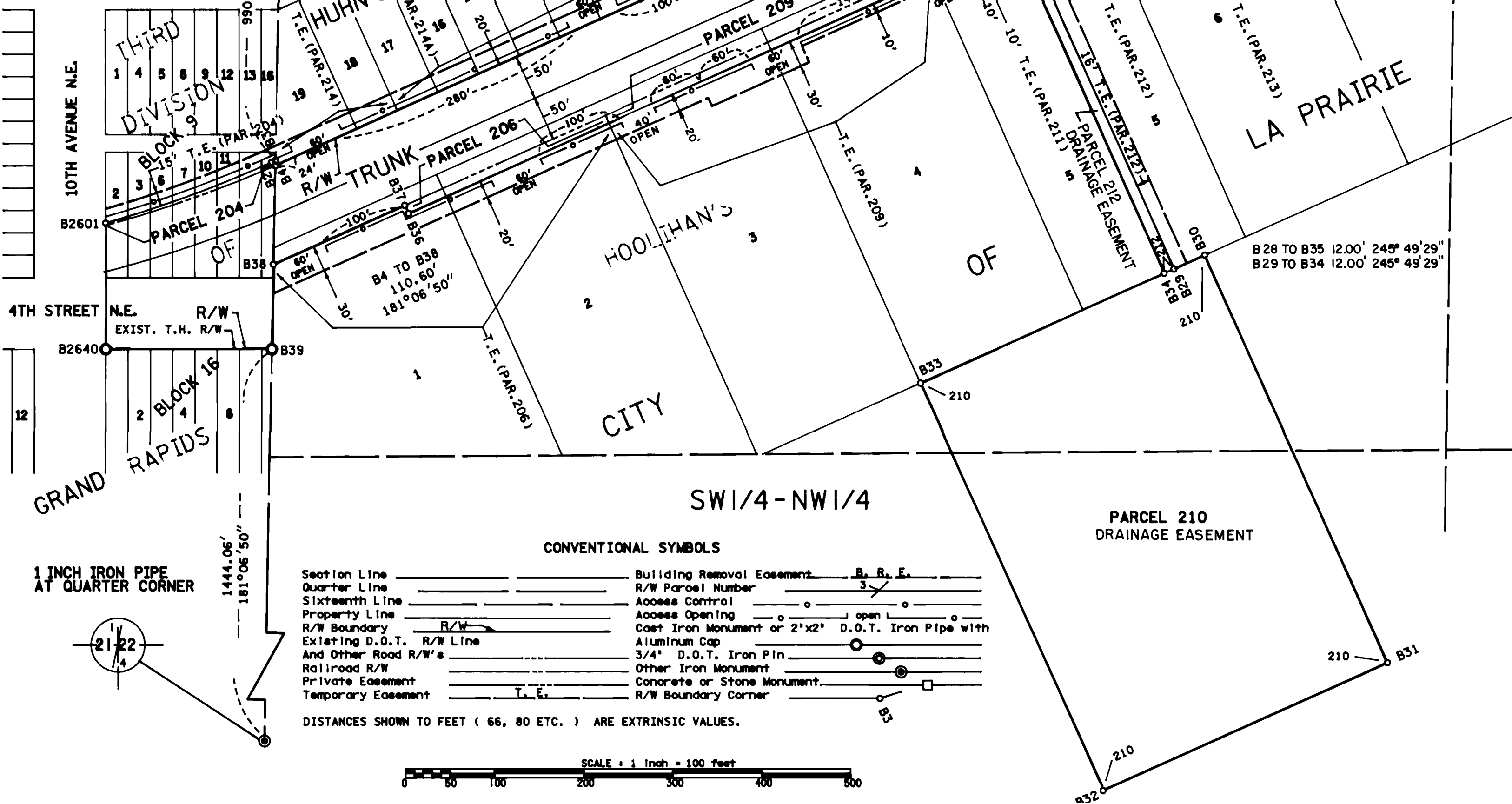
**SURVEY STANDARDS**

- The plat values, azimuths, and distances are based on the project control survey system.
- The boundary monuments shown on this plat have been field checked for location. The standard deviation for the monument position is 1/16 inch.
- The county coordinates shown on one monument are based on ties to national control monuments.
- Certificates of Location have been filed at the County Recorder's Office and/or the County Surveyor's Office for the section corner monuments shown on this plat.
- For details of this survey contact the Surveying and Mapping Section of the Minnesota Department of Transportation.

DULUTH  
 Name of District



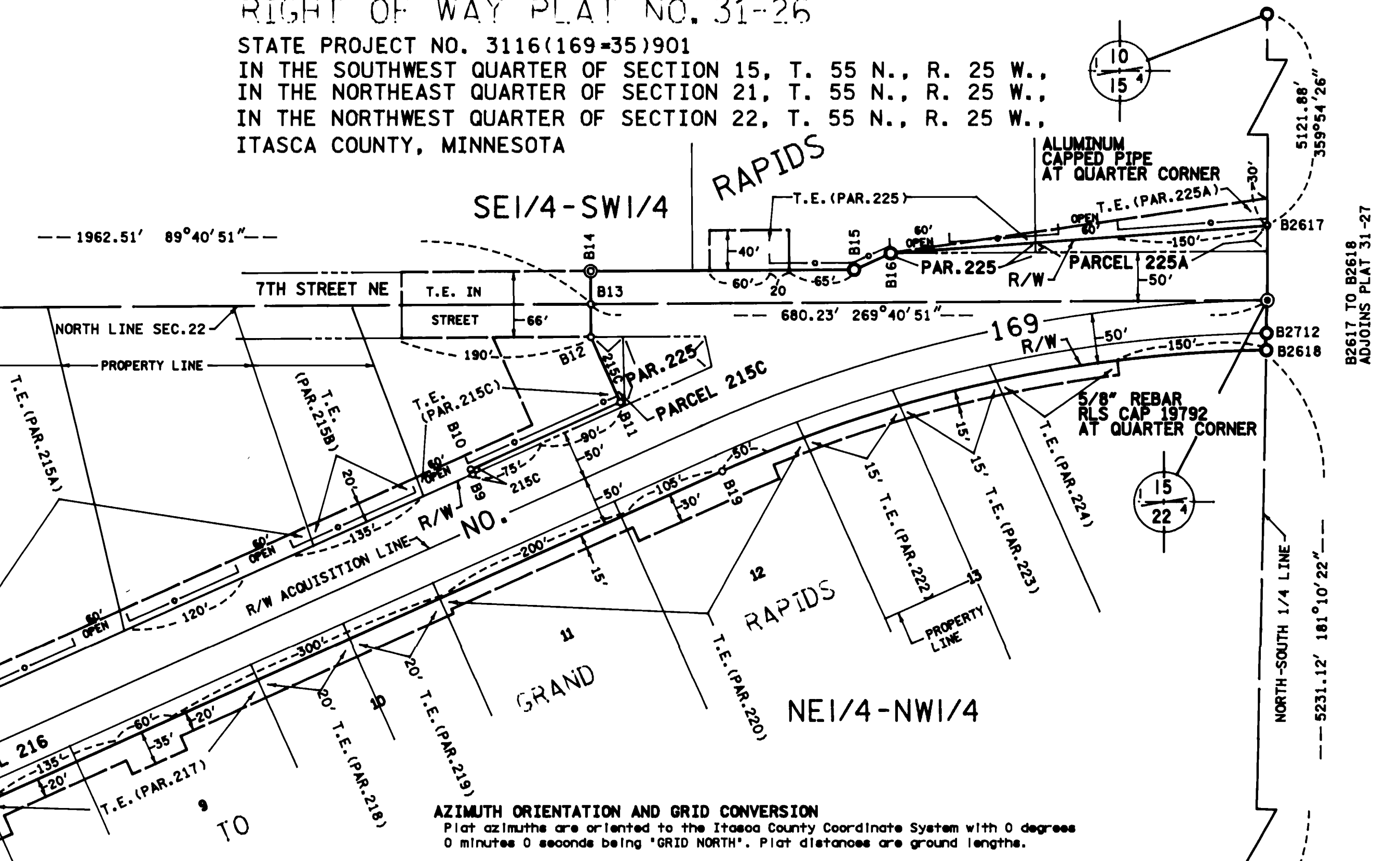
5/8 INCH REBAR  
 CAPPED RLS 19792  
 AT SECTION CORNER  
 ITASCA COUNTY  
 COORDINATES  
 X = 554,989.01  
 Y = 177,662.74  
 DATUM = NAD 1983



PLAT BOUNDARY DATA			PLAT BOUNDARY DATA (CONT.)			
POINT	DISTANCE	AZIMUTH	POINT	DISTANCE	AZIMUTH	
B2601-B2	Δ 8°15'10" R	1377.40'	B32-B33	500.00'	335°49'29"	
C	198.23' CAZ	69°57'04" ARC	198.40'	B33-B34	300.00'	65°49'29"
B2-B3	4.77'	65°49'29"	B34-B35	408.60'	335°49'29"	
B3-B4	5.53'	181°06'50"	B35-B36	746.47'	245°49'29"	
B4-B5	1017.20'	65°49'29"	B36-B37	10.00'	335°49'29"	
B5-B6	25.00'	335°49'29"	B37-B38	161.56'	245°49'29"	
B6-B7	100.00'	65°49'29"	B38-B39	94.87'	181°06'50"	
B7-B8	25.00'	155°49'29"	B39-B2640	186.45'	269°59'41"	
B8-B9	924.80'	65°49'29"	B2640-B2601	141.07'	359°59'41"	
B9-B10	5.00'	335°49'29"				
B10-B11	165.00'	65°49'29"				
B11-B12	71.70'	335°49'29"				
B12-B13	33.00'	359°40'51"				
B13-B14	33.00'	359°40'51"				
B14-B15	264.71'	89°40'51"				
B15-B16	40.21'	65°49'29"				
B16-B2617	379.92'	85°47'28"				
B2617-S1/4 15	75.04'	179°54'26"				
S1/4 15-B2712	33.01'	181°10'22"				
B2712-B2618	17.01'	181°10'22"				
B2618-B19	Δ 23°20'48" R	1385.45'				
C	560.64' CAZ	257°29'53" ARC	564.54'			
B19-B20	855.00'	245°49'29"				
B20-B21	25.00'	155°49'29"				
B21-B22	60.00'	245°49'29"				
B22-B23	25.00'	335°49'29"				
B23-B24	241.22'	245°49'29"				
B24-B25	25.00'	155°49'29"				
B25-B26	100.00'	245°49'29"				
B26-B27	15.00'	335°49'29"				
B27-B28	143.00'	245°49'29"				
B28-B29	408.60'	155°49'29"				
B29-B30	38.00'	65°49'29"				
B30-B31	500.00'	155°49'29"				
B31-B32	350.00'	245°49'29"				

MINNESOTA DEPARTMENT OF TRANSPORTATION  
 RIGHT OF WAY PLAT NO. 31-26

STATE PROJECT NO. 3116(169-35)901  
 IN THE SOUTHWEST QUARTER OF SECTION 15, T. 55 N., R. 25 W.,  
 IN THE NORTHEAST QUARTER OF SECTION 21, T. 55 N., R. 25 W.,  
 IN THE NORTHWEST QUARTER OF SECTION 22, T. 55 N., R. 25 W.,  
 ITASCA COUNTY, MINNESOTA



**AZIMUTH ORIENTATION AND GRID CONVERSION**  
 Plat azimuths are oriented to the Itasca County Coordinate System with 0 degree 0 minutes 0 seconds being 'GRID NORTH'. Plat distances are ground lengths.

RIGHT OF WAY IN SECTION 15						
PARCEL	OWNER	LOCATION	NET T.H. R/W ACRES	TEMPORARY EASEMENT ACRES (MORE OR LESS)	PERMANENT DRAINAGE EASEMENT ACRES (MORE OR LESS)	EASEMENT EXPIRES ON
225A	OLIVER A. TOVEN	SE1/4SW1/4	0.09	0.11		12-1-97 FEE
RIGHT OF WAY IN SECTIONS 15 & 22						
225	ASSEMBLIES OF GOD CHURCH OF GRAND RAPIDS	SE1/4SW1/4 SEC. 15 NE1/4NW1/4 SEC. 22	0.11	0.09		12-1-97 FEE
RIGHT OF WAY IN SECTION 22						
210	GERTRUDE B. HOOLIHAN	W1/2NW1/4			4.02	EASE.
215	KORDEL FURNITURE MART OF GRAND RAPIDS	NW1/4NW1/4	0.01	0.14		12-1-97 FEE
215A	MIDWAY BOWL, INC.	N1/2NW1/4		0.20		12-1-97 ACCESS
215B	RICHARD CHAMBERS	NE1/4NW1/4		0.06		12-1-97 ACCESS
215C	ITT FINANCIAL SERVICES, INC	NE1/4NW1/4	0.04	0.24		12-1-97 FEE
224	ARNOLD G. JACOBSON	NE1/4NW1/4		0.05		12-1-97
RIGHT OF WAY IN THIRD DIVISION TO GRAND RAPIDS						
204	LEONARD L. HEDMAN	LOTS 2,3,6,7,10, 11,14 & 15 BLK. 9	1015	3068		12-1-97 FEE
RIGHT OF WAY IN HOOLIHAN'S ADDITION TO GRAND RAPIDS						
206	IRON RANGE BOTTLING CO. INC	LOTS 1 & 2	2470	9970		12-1-97 FEE
209	L & M SUPPLY, INC.	LOTS 3 & 4	4000	7550		12-1-97 FEE
211	FIRST NATIONAL BANK OF DEER RIVER	LOT 5	1000	1000		12-1-97 FEE
212	FIRST NATIONAL BANK OF COLERAINE	LOT 5	1000	7312	4903	12-1-97 FEE
213	MALLAK, INC.	LOTS 6-8	3818	12065		12-1-97 FEE
216	ELDON H. ALLISON	LOT 8	750	2250		12-1-97 FEE
217	CENTURY-MATTHEWS MOTOR FREIGHT, INC.	LOTS 8 & 9		7100		12-1-97
218	MARK ALBERT FIGGINS	LOT 10		2000		12-1-97
219	DANIEL J. HOOLIHAN	LOT 10		2000		12-1-97
220	LLOYD S. GAUTHIER	LOTS 11&12		8331		12-1-97
222	LAWRENCE G. PHELAN	LOT 13		1500		12-1-97
223	DAVID B. MAYO	LOT 13		1500		12-1-97
RIGHT OF WAY IN HUHN'S ADDITION TO GRAND RAPIDS						
214	JAMES A. BEST	LOTS 18-19 BLK. 6		2900		12-1-97 ACCESS
214A	HERMAN BURGGRAF	LOTS 11-17 BLK. 6		7000		12-1-97 ACCESS
214B	ALBERT M. DOTY	LOTS 8-10 BLK. 6		3000		12-1-97 ACCESS
214C	THOMAS W. GIGLIOTTI	LOTS 6 & 7 BLK. 6		2000		12-1-97
214D	KENNETH D. CHAMBERS	LOTS 4 & 5 BLK. 6		1250		12-1-97
214E	HAROLD V. HUGHES	LOTS 3 & 4 BLK. 6		1250		12-1-97
214F	MURPHY OIL USA, INC.	LOTS 1-3 BLK. 6	694	3049		12-1-97 FEE

NOTE: TEMPORARY EASEMENTS IN PUBLIC ROADS WILL EXPIRE ON 12-1-97.

FILE NO. 31068  
 OFFICE OF COUNTY REGISTRAR  
 ITASCA COUNTY, MINN.  
 I HEREBY CERTIFY THAT THIS PLAT HAS BEEN FILED IN THIS OFFICE AT 2:25 O'CLOCK P.M. ON 1-23-92  
 REGISTRAR OF TITLES  
 DOC. NO. 42893  
 OFFICE OF COUNTY RECORDER  
 ITASCA COUNTY, MINN.  
 I HEREBY CERTIFY THAT THIS PLAT HAS BEEN FILED IN THIS OFFICE AT 2:25 O'CLOCK P.M. ON 1-23-92  
 COUNTY RECORDER