

THE COMMISSIONER OF TRANSPORTATION IS HEREBY DESIGNATING THE DEFINITE LOCATION OF TRUNK HIGHWAY NO. 169 FROM THE JUNCTION OF COUNTY ROAD B TO 1.0 MILE NORTHEAST.

As shown on this plat prepared by the State of Minnesota Department of Transportation is hereby certified as the official plat of that portion of said T.H. 169 within the designated portion of Section 14 and the Commissioner's Order therefor, pursuant to Minnesota Statutes, section 161.16 subd. 2, section 160.14 subd. 1, section 160.085, and section 161.18.

Commissioner's Order No. 79061 Location PLAT 31-33 Nature of Interest Definite location, width, access, temporary easement and building removal easement.

Certified by James N. Denn, Commissioner of Transportation, by K.F. Rasmussen, Acting Director, Office of Right of Way & Surveys, dated 1-22-93.

I hereby certify that this plat was prepared by me or under my direct supervision and that I am a duly Registered Land Surveyor under the Laws of the State of Minnesota, that all measurements are correctly shown on this plat, and that all monuments have been correctly placed as shown on this plat.

Certified by S. E. H. Allen, Registered Land Surveyor, Reg. No. 11933, dated 1-22-93, Office of Right of Way & Surveys.

I hereby certify that this plat was surveyed by me or under my direct supervision and that I am a duly Registered Land Surveyor under the Laws of the State of Minnesota, that all measurements are correctly shown on this plat, and that all monuments have been correctly placed as shown on this plat.

Certified by R. J. H. Allen, Registered Land Surveyor, Reg. No. 17260, dated 2-4-93, W/7007 District Office.

AZIMUTH ORIENTATION AND GRID CONVERSION
Plat azimuths are oriented to the County Coordinate System with 0 degrees 0 minutes 0 seconds being "GRID NORTH". Plat distances are ground lengths.

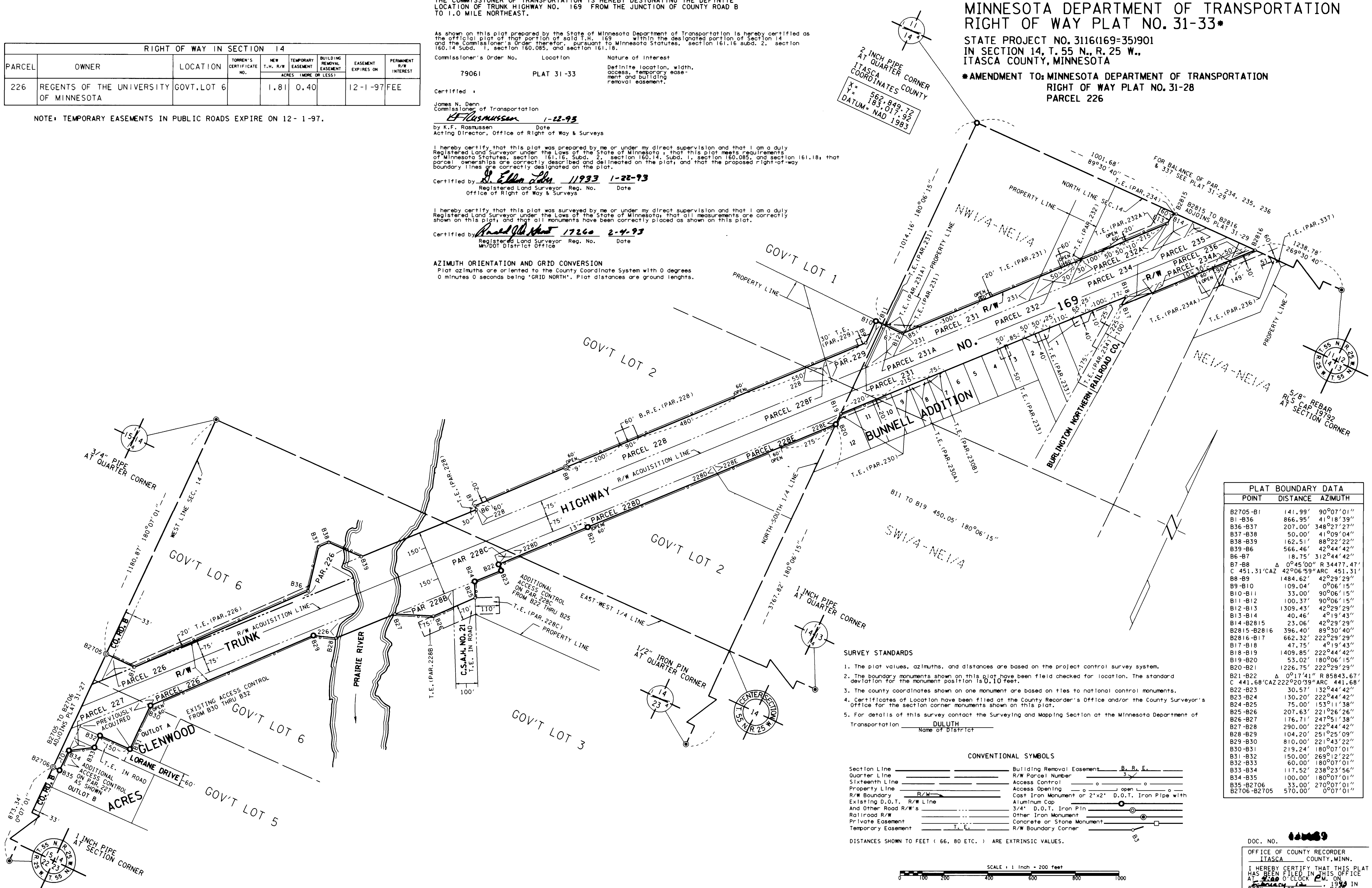
RIGHT OF WAY IN SECTION 14								
PARCEL	OWNER	LOCATION	TORREN'S CERTIFICATE NO.	NEW T.M. R/W ACRES	TEMPORARY EASEMENT (MORE OR LESS)	BUILDING REMOVAL EASEMENT	EASEMENT EXPIRES ON	PERMANENT R/W INTEREST
226	REGENTS OF THE UNIVERSITY OF MINNESOTA	GOVT. LOT 6		1.81	0.40		12-1-97	FEE

NOTE: TEMPORARY EASEMENTS IN PUBLIC ROADS EXPIRE ON 12-1-97.

MINNESOTA DEPARTMENT OF TRANSPORTATION
RIGHT OF WAY PLAT NO. 31-33*

STATE PROJECT NO. 3116(169=35)901
IN SECTION 14, T. 55 N., R. 25 W.,
ITASCA COUNTY, MINNESOTA

*AMENDMENT TO: MINNESOTA DEPARTMENT OF TRANSPORTATION
RIGHT OF WAY PLAT NO. 31-28
PARCEL 226



PLAT BOUNDARY DATA		
POINT	DISTANCE	AZIMUTH
B2705-B1	141.99'	90°07'01"
B1-B36	866.95'	41°18'39"
B36-B37	207.00'	348°27'27"
B37-B38	50.00'	41°09'04"
B38-B39	162.51'	88°22'22"
B39-B6	566.46'	42°44'42"
B6-B7	18.75'	312°44'42"
B7-B8	0°45'00" R	34477.47'
C 451.31' CAZ	42°06'59" ARC	451.31'
B8-B9	1484.62'	42°29'29"
B9-B10	109.04'	0°06'15"
B10-B11	33.00'	90°06'15"
B11-B12	100.37'	90°06'15"
B12-B13	1309.43'	42°29'29"
B13-B14	40.46'	4°19'43"
B14-B2815	23.06'	42°29'29"
B2815-B2816	396.40'	89°30'40"
B2816-B17	662.32'	22°29'29"
B17-B18	47.75'	4°19'43"
B18-B19	1409.85'	22°44'42"
B19-B20	53.02'	180°06'15"
B20-B21	1226.75'	22°29'29"
B21-B22	0°17'41" R	85843.67'
C 441.68' CAZ	22°20'39" ARC	441.68'
B22-B23	30.57'	132°44'42"
B23-B24	130.20'	22°44'42"
B24-B25	75.00'	153°11'38"
B25-B26	207.63'	22°12'26"
B26-B27	176.71'	247°51'38"
B27-B28	290.00'	22°44'42"
B28-B29	104.20'	251°25'09"
B29-B30	810.00'	22°43'22"
B30-B31	219.24'	180°07'01"
B31-B32	150.00'	269°12'25"
B32-B33	60.00'	180°07'01"
B33-B34	117.52'	238°23'56"
B34-B35	100.00'	180°07'01"
B35-B2706	33.00'	270°07'01"
B2706-B2705	570.00'	0°07'01"

- SURVEY STANDARDS**
- The plat values, azimuths, and distances are based on the project control survey system.
 - The boundary monuments shown on this plat have been field checked for location. The standard deviation for the monument position is 0.10 feet.
 - The county coordinates shown on one monument are based on ties to national control monuments.
 - Certificates of Location have been filed at the County Recorder's Office and/or the County Surveyor's Office for the section corner monuments shown on this plat.
 - For details of this survey contact the Surveying and Mapping Section at the Minnesota Department of Transportation, DULUTH, Name of District.

CONVENTIONAL SYMBOLS

Section Line	Building Removal Easement	B. R. E.
Quarter Line	R/W Parcel Number	3
Sixteenth Line	Access Control	○
Property Line	Access Opening	○
R/W Boundary	Cast Iron Monument or 2"x2" D.O.T. Iron Pipe with Aluminum Cap	○
Existing D.O.T. R/W Line	3/4" D.O.T. Iron Pin	○
And Other Road R/W's	Other Iron Monument	○
Railroad R/W	Concrete or Stone Monument	○
Private Easement	Temporary Easement	○
Temporary Easement	R/W Boundary Corner	○

DISTANCES SHOWN TO FEET (66, 80 ETC.) ARE EXTRINSIC VALUES.



DOC. NO. 44689
OFFICE OF COUNTY RECORDER
ITASCA COUNTY, MINN.
I HEREBY CERTIFY THAT THIS PLAT
HAS BEEN FILED IN THIS OFFICE
AT 10:00 O'CLOCK P.M. OF
MAY 12 1993 IN
BOOK 14 PAGE 193
COUNTY RECORDER