

RIGHT OF WAY IN WHITESIDES ECHOING HILLS								
PARCEL	OWNER	LOCATION	TURNING CERTIFICATE NO.	NEW T.H. R/W		TEMPORARY EASEMENT		PERMANENT R/W INTEREST
				HECTARES (MORE OR LESS)	ACRES (MORE OR LESS)	HECTARES (MORE OR LESS)	ACRES (MORE OR LESS)	
255	ANTHONY W. KILE	LOTS 5 & 6						ACCESS

NOTE: TEMPORARY EASEMENTS IN PUBLIC ROADS WILL EXPIRE ON 12-01-2005.

**\*AMENDMENT TO: MINNESOTA DEPARTMENT OF TRANSPORTATION  
RIGHT OF WAY PLAT NO. 31-68  
PARCEL 259**

THE COMMISSIONER OF TRANSPORTATION IS HEREBY DESIGNATING THE DEFINITE LOCATION OF TRUNK HIGHWAY NO. 169 FROM 10 KILOMETERS SOUTH OF GRAND RAPIDS TO GRAND RAPIDS

as shown on this plat prepared by the State of Minnesota Department of Transportation is hereby certified as the official plat of that portion of said T.H. 169 within the designated portion of Sections 19 & 20 160.14 subd. 1, section 161.16 subd. 2, and section 161.18.

It is further ordered that it is necessary to acquire all trees, shrubs, grass and herbage within the right of way of said Trunk Highway, and to keep and have exclusive control of the same.

Commissioner's Order No.	Location	Nature of Interest
84978	PLAT 31-75	Definite location, width, access, temporary easement and building removal easement.

Certified by:  
Elynn Tinklerberg  
Commissioner of Transportation  
Date: 11-2-2000  
by K.F. Roosman  
Director, Office of Land Management

I hereby certify that this plat was prepared by me or under my direct supervision and that I am a duly Registered Land Surveyor under the Laws of the State of Minnesota; that this plat meets requirements of Minnesota Statutes, section 160.06, section 160.14 subd. 1, section 161.16 subd. 2, and section 161.18; that parcels, general and specific, described and delineated on the plat, and that the proposed right-of-way boundary lines are correctly designated on the plat.

Certified by: D. O. K. [Signature] 12042 11-2-2000  
Registered Land Surveyor License No. Date  
Office of Land Management

I hereby certify that this plat was surveyed by me or under my direct supervision and that I am a duly Registered Land Surveyor under the Laws of the State of Minnesota; that all measurements are correctly shown on this plat; that all monuments have been correctly placed as shown on this plat; and that Certificates of Location for the monumented public land survey corners as shown on this plat are on file in the County Recorder's Office.

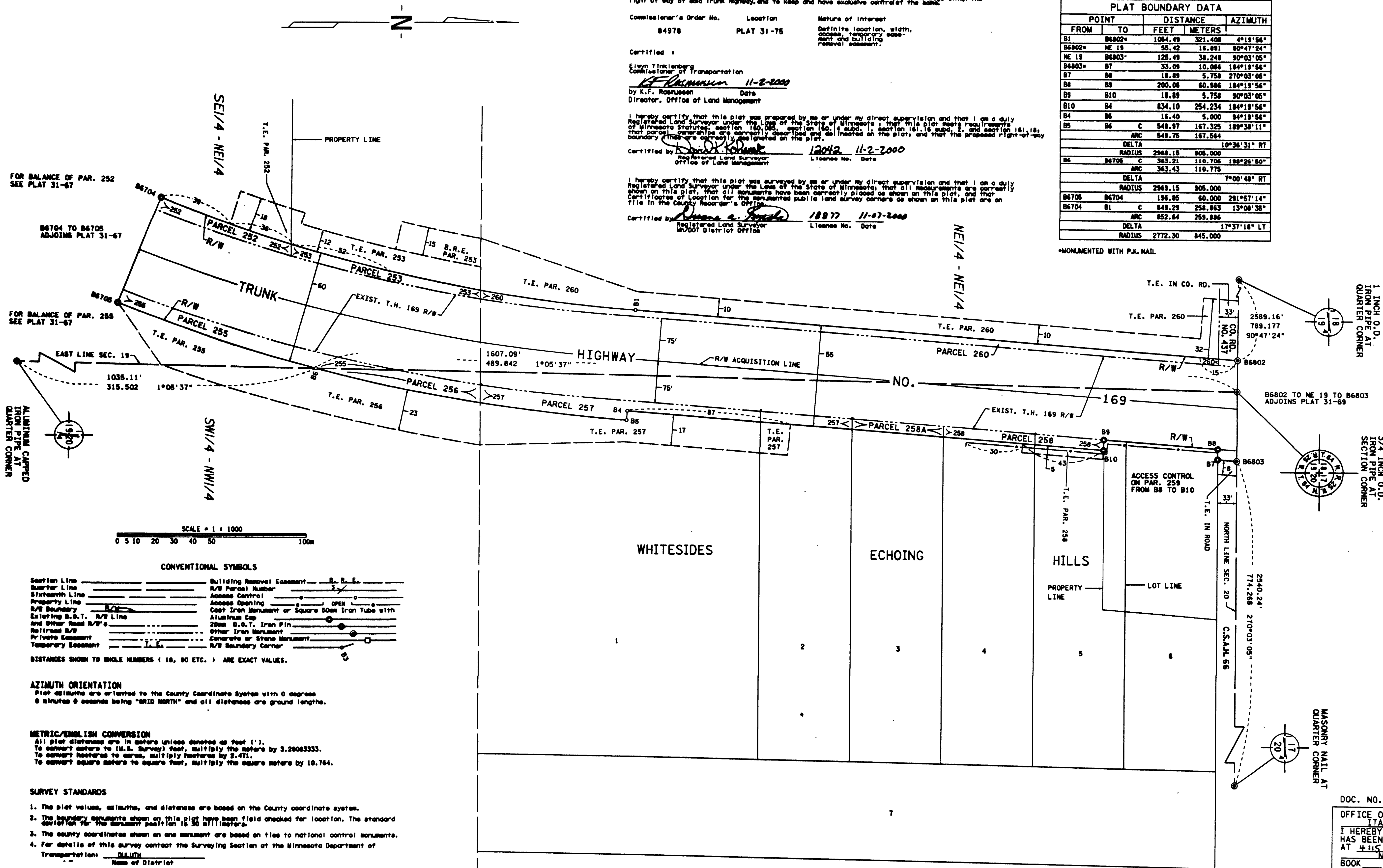
Certified by: [Signature] 18877 11-07-2000  
Registered Land Surveyor License No. Date  
MNDOT District Office

COPY OF MNDOT ORIGINAL  
MINNESOTA DEPARTMENT OF TRANSPORTATION  
RIGHT OF WAY PLAT NO. 31-75\*

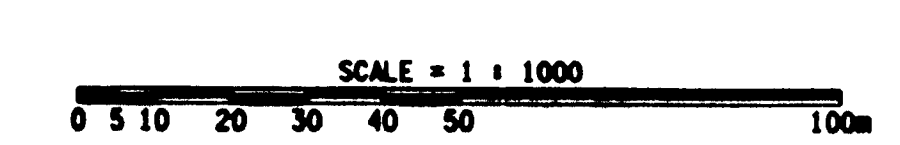
CONTROL SECTION NO. 3115 (169-35)902  
IN THE NORTHEAST QUARTER OF SECTION 19, T. 54 N., R. 25 W.,  
IN THE NORTHWEST QUARTER OF SECTION 20, T. 54 N., R. 25 W.,  
ITASCA COUNTY, MINNESOTA

PLAT BOUNDARY DATA			
POINT	FROM	TO	AZIMUTH
B1	B6002*	1064.49	321.408 4°19'56"
B6802*	NE 19	55.42	16.891 90°47'24"
NE 19	B6803*	125.49	38.248 90°03'05"
B6803*	B7	33.09	10.086 184°19'56"
B7	B8	18.89	5.758 270°03'06"
B8	B9	200.08	60.896 184°19'56"
B9	B10	18.89	5.758 90°03'05"
B10	B4	834.10	254.234 184°19'56"
B4	B5	16.40	5.000 94°19'56"
B5	B6	C 548.97	167.325 189°38'11"
	ARC	548.75	167.564
	DELTA		10°36'31" RT
	RADIUS	2968.15	905.000
B6	B6705	C 363.21	110.706 189°26'50"
	ARC	363.43	110.775
	DELTA		7°00'48" RT
	RADIUS	2968.15	905.000
B6705	B6704	196.85	60.000 291°57'14"
B6704	B1	C 848.28	258.863 13°08'35"
	ARC	852.64	259.886
	DELTA		17°37'18" LT
	RADIUS	2772.30	845.000

\*MONUMENTED WITH P.K. NAIL



ITASCA COUNTY  
METRIC COORDINATES  
X= 155,908.372  
Y= 44,558.923  
NAD 83 (1986)



CONVENTIONAL SYMBOLS

Section Line	Building Removal Easement	B. R. E.
Quarter Line	R/W Parcel Number	
Statewide Line	Access Control	
Property Line	Access Opening	
R/W Boundary	Cast Iron Monument or Square Stone Iron Tube with	
Existing B.O.T. R/W Line	Aluminum Cap	
And Other Road R/W's	20mm O.D.T. Iron Pin	
Highway R/W	Other Iron Monument	
Private Easement	Concrete or Stone Monument	
Temporary Easement	R/W Boundary Corner	

Distances shown to whole numbers (10, 80 etc.) are exact values.

**AZIMUTH ORIENTATION**  
Plat azimuths are oriented to the County Coordinate System with 0 degrees 0 minutes 0 seconds being "GRID NORTH" and all distances are ground lengths.

- METRIC/ENGLISH CONVERSION**  
All plat distances are in meters unless denoted as feet (').  
To convert meters to (U.S. Survey) feet, multiply the meters by 3.28083333.  
To convert hectares to acres, multiply hectares by 2.471.  
To convert square meters to square feet, multiply the square meters by 10.764.
- SURVEY STANDARDS**
- The plat values, azimuths, and distances are based on the County coordinate system.
  - The boundary monuments shown on this plat have been field checked for location. The standard deviation for the monument position is 30 millimeters.
  - The county coordinates shown on one monument are based on ties to national control monuments.
  - For details of this survey contact the Surveying Section of the Minnesota Department of Transportation: DALITH  
Name of District

DOC. NO. 521373  
OFFICE OF COUNTY RECORDER  
ITASCA COUNTY, MINN.  
HEREBY CERTIFY THAT THIS PLAT  
HAS BEEN FILED IN THIS OFFICE  
AT 4:15 O'CLOCK P.M., ON  
NOVEMBER 7, 2000 IN  
BOOK \_\_\_\_\_ OF \_\_\_\_\_, PAGE \_\_\_\_\_  
COUNTY RECORDER