

MINNESOTA DEPARTMENT OF TRANSPORTATION
RIGHT OF WAY PLAT NO. 31-72

CONTROL SECTION NO. 3115 (169-35)903
IN THE NORTH HALF OF SECTION 8, T. 54 N., R. 25 W.,
ITASCA COUNTY, MINNESOTA

THE COMMISSIONER OF TRANSPORTATION IS HEREBY DESIGNATING THE DEFINITE LOCATION OF TRUNK HIGHWAY NO. 169 FROM 10 KILOMETERS SOUTH OF GRAND RAPIDS TO GRAND RAPIDS.

as shown on this plat prepared by the State of Minnesota Department of Transportation is hereby certified as the official plat of that portion of said T.H. 169 within the designated portion of Section 8 and the Commissioner's Order therefor, pursuant to Minnesota Statutes, section 160.085, section 160.14 subd. 1, section 161.16 subd. 2, and section 161.18.

It is further ordered that it is necessary to acquire all trees, shrubs, grass and herbage within the right of way of said trunk highway, and to keep and have exclusive control of the same.

Commissioner's Order No.	Location	Nature of Interest
84456	PLAT 31-72	Definite location, width, access, temporary easement and building removal easement.

Certified:

Elwyn Tinkenberg
Commissioner of Transportation
David K. Kowak 4-26-2000
by *David K. Kowak* Date
Director, Office of Land Management

I hereby certify that this plat was prepared by me or under my direct supervision and that I am a duly Registered Land Surveyor under the Laws of the State of Minnesota; that this plat meets requirements of Minnesota Statutes, section 160.085, section 160.14 subd. 1, section 161.16 subd. 2, and section 161.18; that parcel ownerships are correctly described and delineated on the plat; and that the proposed right-of-way boundary lines are correctly designated on the plat.

Certified by *David K. Kowak* 12042 4-26-2000
Registered Land Surveyor License No. Date
Office of Land Management

I hereby certify that this plat was surveyed by me or under my direct supervision and that I am a duly Registered Land Surveyor under the Laws of the State of Minnesota; that all measurements are correctly shown on this plat; that all monuments have been correctly placed as shown on this plat; and that Certificates of Location for the monumented public land survey corners as shown on this plat are on file in the County Recorder's Office.

Certified by *Bruce G. Sand* 21107 5-3-00
Registered Land Surveyor License No. Date
MNDOT District Office

SURVEY STANDARDS

- The plat values, azimuths, and distances are based on the County coordinate system.
- The boundary monuments shown on this plat have been field checked for location. The standard deviation for the monument position is 30 millimeters.
- The county coordinates shown on one monument are based on files to national control monuments.
- For details of this survey contact the Surveying Section at the Minnesota Department of Transportation: DULUTH Name of District

AZIMUTH ORIENTATION

Plat azimuths are oriented to the County Coordinate System with 0 degrees 0 minutes 0 seconds being "GRID NORTH" and all distances are ground lengths.

METRIC/ENGLISH CONVERSION

All plat distances are in meters unless denoted as feet ('').
To convert meters to (U.S. Survey) feet, multiply the meters by 3.28083333.
To convert hectares to acres, multiply hectares by 2.471.
To convert square meters to square feet, multiply the square meters by 10.764.

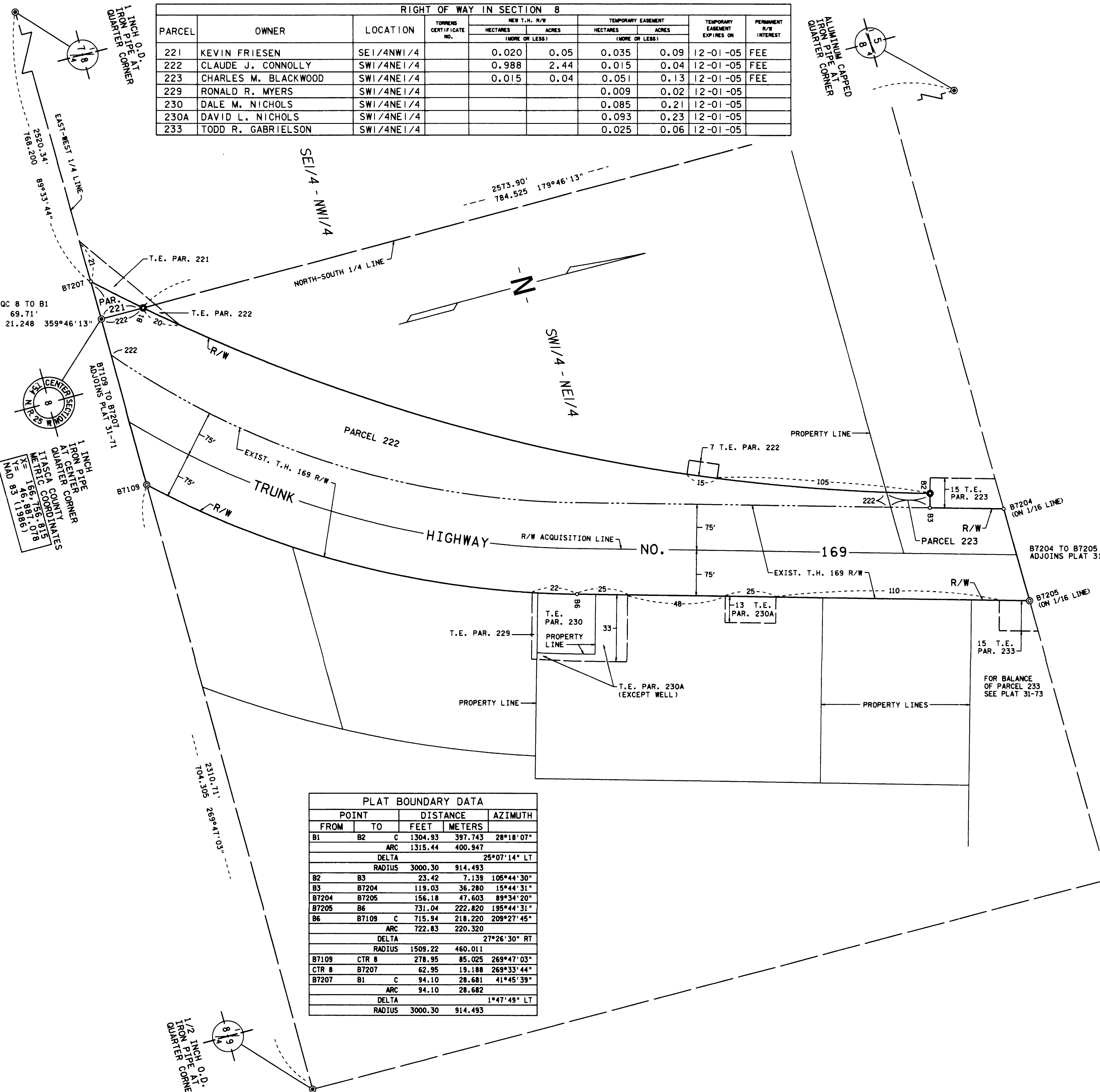
CONVENTIONAL SYMBOLS

Section Line	—————	Building Removal Easement	B.R.E. ————
Quarter Line	—————	R/W Parcel Number	3/
Sixteenth Line	—————	Access Control	o
Property Line	—————	Access Opening	o OPEN
R/W Boundary	—————	Cast Iron Monument or Square 50mm Iron Tube with	o
Exiting D.O.T. R/W Line	—————	Aluminum Cap	o
And Other Road R/W's	—————	20mm D.O.T. Iron Pin	o
Railroad R/W	—————	Other Iron Monument	o
Private Easement	—————	Concrete or Stone Monument	o
Temporary Easement	—————	R/W Boundary Corner	o

DISTANCES SHOWN TO WHOLE NUMBERS (18, 80 ETC.) ARE EXACT VALUES.

SCALE = 1 : 1000
0 5 10 20 30 40 50 100m

PARCEL	OWNER	LOCATION	TOWNSHIP CERTIFICATE NO.	NEW T.H. R/W		TEMPORARY EASEMENT		TEMPORARY EASEMENT EXPIRES ON	PERMANENT R/W INTEREST
				HECTARES	ACRES	HECTARES	ACRES		
				(MORE OR LESS)	(MORE OR LESS)	(MORE OR LESS)	(MORE OR LESS)		
221	KEVIN FRIESEN	SE1/4NW1/4		0.020	0.05	0.035	0.09	12-01-05	FEE
222	CLAUDE J. CONNOLLY	SW1/4NE1/4		0.988	2.44	0.015	0.04	12-01-05	FEE
223	CHARLES M. BLACKWOOD	SW1/4NE1/4		0.015	0.04	0.051	0.13	12-01-05	FEE
229	RONALD R. MYERS	SW1/4NE1/4				0.009	0.02	12-01-05	
230	DALE M. NICHOLS	SW1/4NE1/4				0.085	0.21	12-01-05	
230A	DAVID L. NICHOLS	SW1/4NE1/4				0.093	0.23	12-01-05	
233	TODD R. GABRIELSON	SW1/4NE1/4				0.025	0.06	12-01-05	



PLAT BOUNDARY DATA				
POINT		DISTANCE	AZIMUTH	
FROM	TO	FEET	METERS	
B1	B2	1304.93	397.743	28°18'07"
	ARC	1315.44	400.947	
	DELTA		25°07'14" LT	
	RADIUS	3000.30	914.493	
B2	B3	23.42	7.139	106°44'30"
B3	B7204	119.03	36.280	15°44'31"
B7204	B7205	156.18	47.603	89°34'20"
B7205	B6	731.04	222.820	195°44'31"
B6	B7109	715.94	218.220	209°27'45"
	ARC	722.83	220.320	
	DELTA		27°26'30" RT	
	RADIUS	1509.22	460.011	
B7109	CTR 8	278.95	85.025	269°47'03"
CTR 8	B7207	62.95	19.188	269°33'44"
B7207	B1	94.10	28.681	41°45'39"
	ARC	94.10	28.682	
	DELTA		1°47'49" LT	
	RADIUS	3000.30	914.493	

DOC. NO.

OFFICE OF COUNTY RECORDER
ITASCA COUNTY, MINN.
I HEREBY CERTIFY THAT THIS PLAT
HAS BEEN FILED IN THIS OFFICE
AT 1 O'CLOCK M, ON
BOOK OF PAGE
COUNTY RECORDER

PLAT NO. 31-72
C.S. 3225 (169-35)903