

RIGHT OF WAY IN SECTION 17						
PARCEL	OWNER	LOCATION	TOWNSHIP CERTIFICATE NO.	NEW T.H. R/W		PERMANENT R/W INTEREST
				HECTARES (MORE OR LESS)	ACRES	
288	JAY E. TRYGSTAD	GOVT LOT 2		0.933	2.31	FEE
289	RONALD REX MEYERS	GOVT LOT 2		1.304	3.22	FEE

NOTE: TEMPORARY EASEMENTS IN PUBLIC ROADS WILL EXPIRE ON 12-01-2005

**METRIC/ENGLISH CONVERSION**  
 All plot distances are in meters unless denoted as feet (').  
 To convert meters to (U.S. Survey) feet, multiply the meters by 3.28083333.  
 To convert hectares to acres, multiply hectares by 2.471.  
 To convert square meters to square feet, multiply the square meters by 10.764.

**AZIMUTH ORIENTATION**  
 Plot azimuths are oriented to the County Coordinate System with 0 degrees 0 minutes 0 seconds being "GRID NORTH" and all distances are ground lengths.

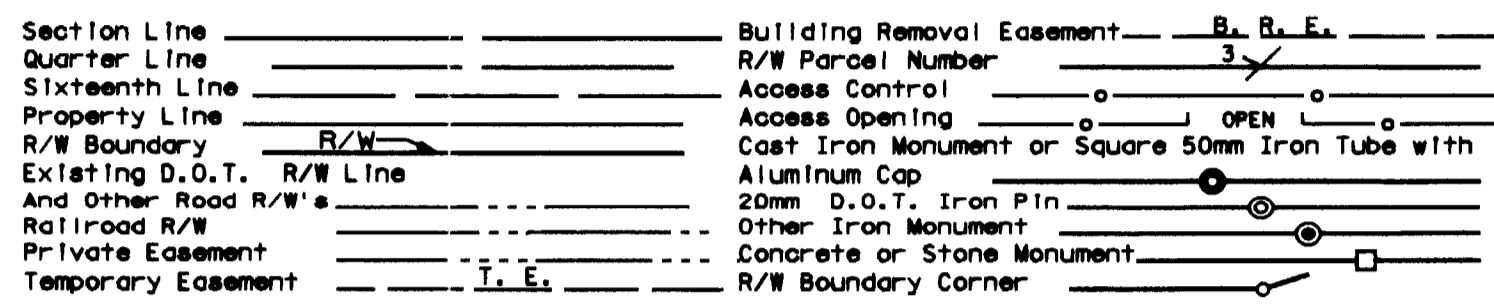
PLAT BOUNDARY DATA				
POINT FROM	POINT TO	DISTANCE		AZIMUTH
		FEET	METERS	
B1	B2	C 16.52	5.035	4°29'35"
		ARC 16.52	5.035	
		DELTA		0°19'19" RT
		RADIUS 2941.18	896.472	
B2	B3	204.18	62.234	271°30'42"
B3	B7004	1043.00	317.906	359°34'29"
B7004	B7005	380.44	115.957	111°53'40"
B7005	B7006	C 46.22	14.087	22°45'07"
		ARC 46.22	14.087	
		DELTA		0°52'41" RT
		RADIUS 3016.18	919.332	
B7006	B7007	225.00	68.580	113°11'27"
B7007	B8	C 914.56	278.759	193°45'42"
		ARC 918.70	280.021	
		DELTA		18°51'31" LT
		RADIUS 2791.18	850.752	
B8	B6909	310.39	94.608	184°19'56"
B6909	B6908	150.18	45.775	271°30'42"
B6908	B1	317.78	96.861	4°19'56"

\*MONUMENTED WITH P.K. NAIL

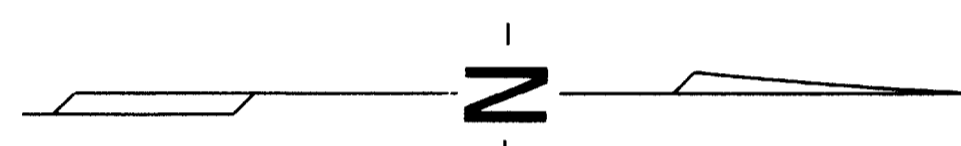
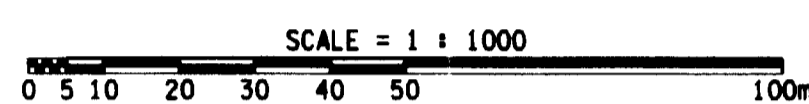
**SURVEY STANDARDS**

- The plot values, azimuths, and distances are based on the County coordinate system.
- The boundary monuments shown on this plat have been field checked for location. The standard deviation for the monument position is 30 millimeters.
- The county coordinates shown on one monument are based on ties to national control monuments.
- For details of this survey contact the Surveying Section at the Minnesota Department of Transportation: PLUMH Name of District

**CONVENTIONAL SYMBOLS**



DISTANCES SHOWN TO WHOLE NUMBERS ( 18, 80 ETC. ) ARE EXACT VALUES.



**MINNESOTA DEPARTMENT OF TRANSPORTATION  
RIGHT OF WAY PLAT NO. 31-70**

CONTROL SECTION NO. 3115 (169=35)902  
IN GOV'T. LOT 2 OF SECTION 17, T. 54 N., R. 25 W.,  
ITASCA COUNTY, MINNESOTA

THE COMMISSIONER OF TRANSPORTATION IS HEREBY DESIGNATING THE DEFINITE LOCATION OF TRUNK HIGHWAY NO. 169 FROM 10 KILOMETERS SOUTH OF GRAND RAPIDS TO GRAND RAPIDS

as shown on this plat prepared by the State of Minnesota Department of Transportation is hereby certified as the official plat of that portion of said T.H. 169 within the designated portion of Section 17 and the Commissioner's Order therefor, pursuant to Minnesota Statutes, section 160.04, section 160.14 subd. 1, section 161.16 subd. 2, and section 161.18.

It is further ordered that it is necessary to acquire all trees, shrubs, grass and herbage within the Right of way of said Trunk Highway, and to keep and have exclusive control of the same.

Commissioner's Order No.	Location	Nature of Interest
84454	PLAT 31-70	Definite location, width, access, temporary easement and building removal easement.

Certified by  
 Elwyn Tinklerberg  
 Commissioner of Transportation  
 Date 5-11-2000

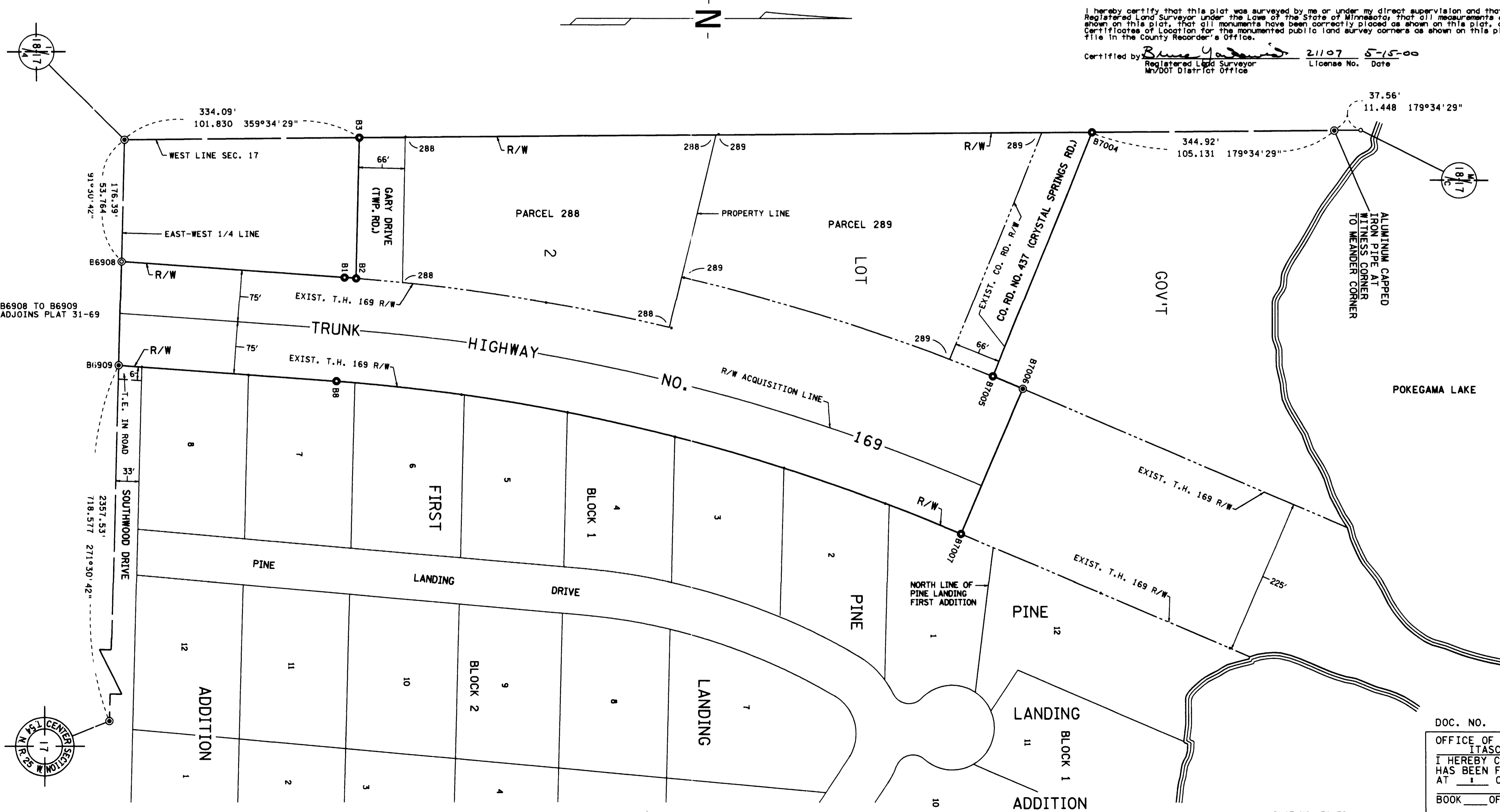
I hereby certify that this plat was prepared by me or under my direct supervision and that I am a duly Registered Land Surveyor under the Laws of the State of Minnesota; that this plat meets requirements of Minnesota Statutes, section 160.06, section 160.14 subd. 1, section 161.16 subd. 2, and section 161.18; that parcel ownerships are correctly described and delineated on the plat; and that the proposed right-of-way boundary lines are correctly designated on the plat.

Certified by Daniel K. Kohnke 12042 5-10-00  
 Registered Land Surveyor License No. Date  
 Office of Land Management

I hereby certify that this plat was surveyed by me or under my direct supervision and that I am a duly Registered Land Surveyor under the Laws of the State of Minnesota; that all measurements are correctly shown on this plat; that all monuments have been correctly placed as shown on this plat; and that Certificates of Location for the monumented public land survey corners as shown on this plat are on file in the County Recorder's Office.

Certified by James J. ... 21107 5-15-00  
 Registered Land Surveyor License No. Date  
 MVDOT District Office

ALUMINUM CAPPED  
 IRON PIPE AT  
 QUARTER CORNER  
 METRIC COORDINATES  
 ITASCA COUNTY  
 X = 165,902.152  
 Y = 45,354.035  
 NAD 83 (1986)



DOC. NO.  
 OFFICE OF COUNTY RECORDER  
 ITASCA COUNTY, MINN.  
 I HEREBY CERTIFY THAT THIS PLAT  
 HAS BEEN FILED IN THIS OFFICE  
 AT 1 O'CLOCK M, ON  
 BOOK    OF   , PAGE     
 COUNTY RECORDER