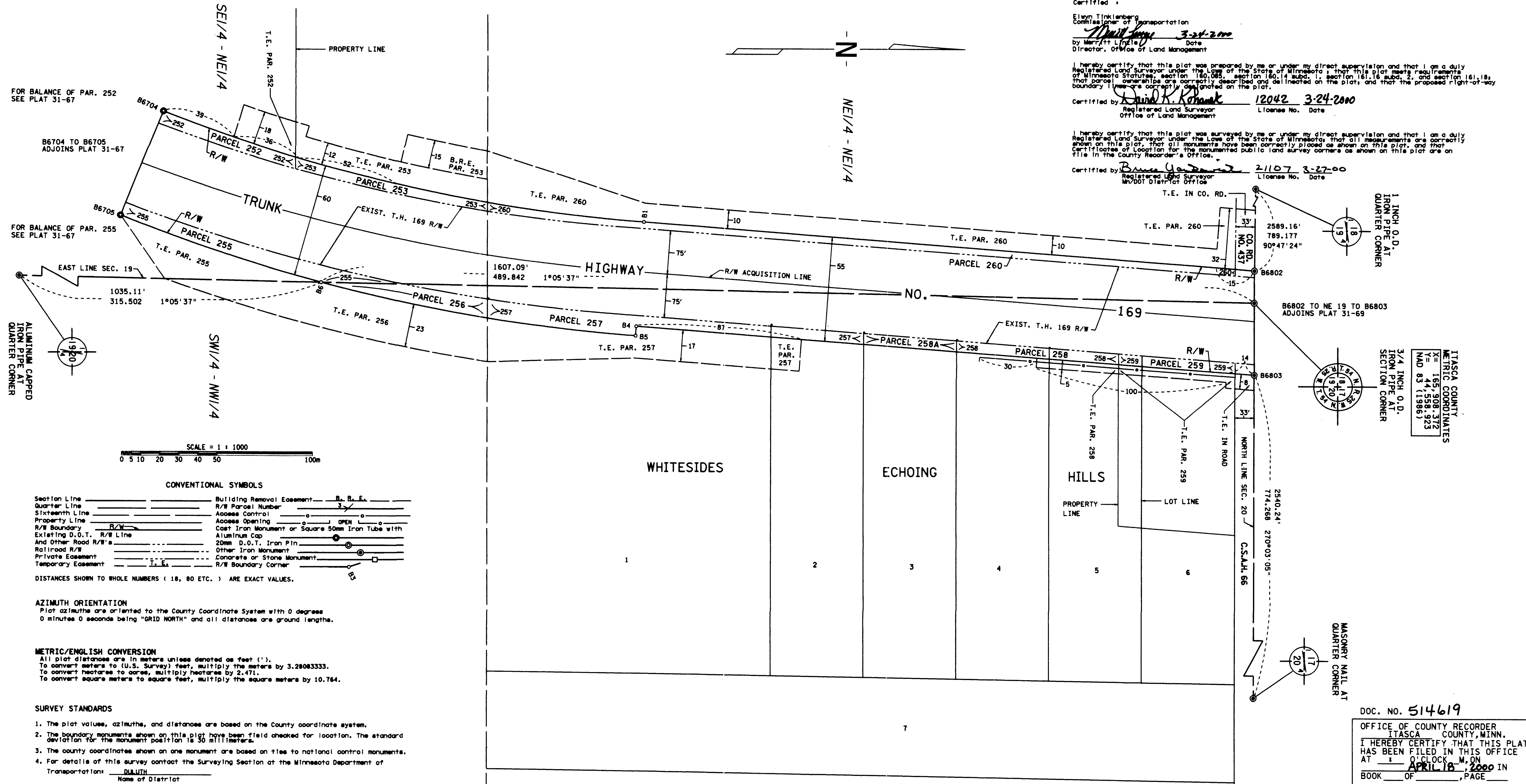


RIGHT OF WAY IN SECTION 19											
PARCEL	OWNER	LOCATION	TOWNSHIP CERTIFICATE NO.	NEW T.H. R/W		TEMPORARY EASEMENT		BUILDING REMOVAL EASEMENT		EASEMENT EXPIRES ON	PERMANENT R/W INTEREST
				HECTARES (MORE OR LESS)	ACRES	HECTARES (MORE OR LESS)	ACRES	HECTARES (MORE OR LESS)	ACRES		
252	COREY J. DAHLGREN	SE1/4NE1/4		0.049	0.12	0.057	0.14			12-01-05	FEE
253	RUSSELL L. SHIELDS	SE1/4NE1/4		0.055	0.14	0.128	0.32	0.067	0.17	12-01-05	FEE
255	DALE L. MOSTOLLER	SE1/4NE1/4		0.105	0.26	0.123	0.30			12-01-05	FEE
260	BETTY L. CLAREMBOUX	NE1/4NE1/4		0.143	0.35	0.492	1.22			12-01-05	FEE
RIGHT OF WAY IN SECTION 20											
256	LIILA FOREST PRODUCTS, INC.	SW1/4NW1/4		0.064	0.16	0.308	0.76			12-01-05	FEE
RIGHT OF WAY IN WHITESIDES ECHOING HILLS											
PARCEL	OWNER	LOCATION	TOWNSHIP CERTIFICATE NO.	NEW T.H. R/W		TEMPORARY EASEMENT		BUILDING REMOVAL EASEMENT		EASEMENT EXPIRES ON	PERMANENT R/W INTEREST
				HECTARES (MORE OR LESS)	ACRES	HECTARES (MORE OR LESS)	ACRES	HECTARES (MORE OR LESS)	ACRES		
257	PHYLLIS V. MCCOY	LOTS 1 & 2		1498.9	16134	2801.6	30156			12-01-05	FEE
258	KAREN E. FIEREK	LOTS 4 & 5		489.8	5272	214.7	2311			12-01-05	FEE
258A	STATE OF MINNESOTA	LOT 3		280.5	3019						FEE
259	ANTHONY W. KILE	LOTS 5 & 6		351.6	3785	325.2	3500			12-01-05	FEE

NOTE: TEMPORARY EASEMENTS IN PUBLIC ROADS WILL EXPIRE ON 12-01-2005

PLAT BOUNDARY DATA				
POINT	FROM	TO	AZIMUTH	
B1	B6802*	1084.49	321.408	4°19'56"
B6802*	NE 19	55.42	16.891	90°47'24"
NE 19	B6803*	125.49	38.248	90°03'05"
B6803*	B4	1067.27	325.306	184°19'56"
B4	B5	16.40	5.000	94°19'56"
B5	B6	548.97	167.325	189°38'11"
	ARC	548.75	167.564	
	DELTA			10°36'31" RT
	RADIUS	2969.15	905.000	
B6	B6705	363.21	110.706	198°26'50"
	ARC	363.43	110.775	
	DELTA			7°00'47" RT
	RADIUS	2969.15	905.000	
B6705	B6704	196.85	60.000	291°57'14"
B6704	B1	849.29	258.863	13°08'35"
	ARC	852.64	259.886	
	DELTA			17°37'18" LT
	RADIUS	2772.30	845.000	

*MONUMENTED WITH P.K. NAIL



FOR BALANCE OF PAR. 252 SEE PLAT 31-67

B6704 TO B6705 ADJOINS PLAT 31-67

FOR BALANCE OF PAR. 255 SEE PLAT 31-67

ALUMINUM CAPPED IRON PIPE AT QUARTER CORNER

SCALE = 1 : 1000
0 5 10 20 30 40 50 100m

CONVENTIONAL SYMBOLS

Section Line	Building Removal Easement	B.R.E.
Quarter Line	R/W Parcel Number	3
Sixteenth Line	Access Control	
Property Line	Access Opening	OPEN
R/W Boundary	Coat Iron Monument or Square 50mm Iron Tube with Aluminum Cap	
Existing D.O.T. R/W Line	20mm D.O.T. Iron Pin	
And Other Road R/W's	Other Iron Monument	
Railroad R/W	Concrete or Stone Monument	
Private Easement	R/W Boundary Corner	
Temporary Easement		

ASTIMUTH ORIENTATION
Plat azimuths are oriented to the County Coordinate System with 0 degrees 0 minutes 0 seconds being "GRID NORTH" and all distances are ground lengths.

METRIC/ENGLISH CONVERSION
All plat distances are in meters unless denoted as feet ('). To convert meters to (U.S. Survey) feet, multiply the meters by 3.28083333. To convert hectares to acres, multiply hectares by 2.471. To convert square meters to square feet, multiply the square meters by 10.764.

- SURVEY STANDARDS
- The plat values, azimuths, and distances are based on the County coordinate system.
 - The boundary monuments shown on this plat have been field checked for location. The standard deviation for the monument position is 30 millimeters.
 - The county coordinates shown on one monument are based on ties to national control monuments.
 - For details of this survey contact the Surveying Section at the Minnesota Department of Transportation: PLAT 31-68 Name of District

MINNESOTA DEPARTMENT OF TRANSPORTATION
RIGHT OF WAY PLAT NO. 31-68

CONTROL SECTION NO. 3115 (169-351902)
IN THE NORTHEAST QUARTER OF SECTION 19, T. 54 N., R. 25 W.,
IN THE NORTHWEST QUARTER OF SECTION 20, T. 54 N., R. 25 W.,
ITASCA COUNTY, MINNESOTA

THE COMMISSIONER OF TRANSPORTATION IS HEREBY DESIGNATING THE DEFINITE LOCATION OF TRUNK HIGHWAY NO. 169 FROM 10 KILOMETERS SOUTH OF GRAND RAPIDS TO GRAND RAPIDS

as shown on this plat prepared by the State of Minnesota Department of Transportation is hereby certified as the official plat of that portion of said T.H. 169 within the designated portion of Sections 19 & 20 and the Commissioner's Order therefor pursuant to Minnesota Statutes, section 160.085, section 160.14 subd. 1, section 161.16 subd. 2, and section 161.18.

It is further ordered that it is necessary to acquire all trees, shrubs, grass and herbage within the right of way of said Trunk Highway, and to keep and have exclusive control of the same.

Commissioner's Order No.	Location	Nature of Interest
84349	PLAT 31-68	Definite location, width, access, temporary easement and building removal easement.

Certified by:
Elwyn Tinklerberg
Commissioner of Transportation
Elwyn Tinklerberg 3-24-2000
Date
Director, Office of Land Management

I hereby certify that this plat was prepared by me or under my direct supervision and that I am a duly Registered Land Surveyor under the Laws of the State of Minnesota and that this plat meets requirements of Minnesota Statutes, section 160.085, section 160.14 subd. 1, section 161.16 subd. 2, and section 161.18, and that the proposed right-of-way boundary lines are correctly delineated on the plat.

Certified by: *David N. Kohnenk* 12042 3-24-2000
Registered Land Surveyor License No. Date
Office of Land Management

I hereby certify that this plat was surveyed by me or under my direct supervision and that I am a duly Registered Land Surveyor under the Laws of the State of Minnesota and that all measurements are correctly shown on this plat, that all monuments have been correctly placed as shown on this plat, and that the Certificates of Location for the monumented public land survey corners as shown on this plat are on file in the County Recorder's Office.

Certified by: *Bruce A. Anderson* 21107 3-27-00
Registered Land Surveyor License No. Date
MNDOT District Office

1 INCH O.D. IRON PIPE AT QUARTER CORNER

3/4 INCH O.D. IRON PIPE AT SECTION CORNER

ITASCA COUNTY METRIC COORDINATES

N	159,508.372
E	458,458.323
MAD	83,198.617

DOC. NO. 514619
OFFICE OF COUNTY RECORDER
ITASCA COUNTY, MINN.
I HEREBY CERTIFY THAT THIS PLAT HAS BEEN FILED IN THIS OFFICE AT 10 O'CLOCK P.M. ON APRIL 16, 2000 IN BOOK OF PAGE COUNTY RECORDER

PLAT NO. 31-68
C.S. 3115 (169-351902)