

MINNESOTA DEPARTMENT OF TRANSPORTATION RIGHT OF WAY PLAT No. 31-19*

STATE PROJECT NO. 3115 (169-35-22B)

IN THE NORTHEAST QUARTER OF SECTION 5, T. 54 N., R. 25 W.
ITASCA COUNTY, MINNESOTA

*AMENDMENT TO MINNESOTA DEPARTMENT OF TRANSPORTATION
RIGHT OF WAY PLAT NO. 31-18
STATE PROJECT NO. 3115 (169-35-22B)
PARCELS 211 AND 211B

THE COMMISSIONER OF TRANSPORTATION IS HEREBY DESIGNATING THE DEFINITE
LOCATION OF TRUNK HIGHWAY NO. 169 FROM 2.5 MILES TO 3.5 MILES SOUTH
OF T.H. 2.

As shown on this plat prepared by the State of Minnesota Department of Transportation, is hereby certified as
the official plat of that portion of said T.H. 169 within the designated portion of Section 5 and the
Commissioner's Order therefor, pursuant to Minnesota Statutes 1969, section 161.16 subd. 2, section 160.14
subd. 1, and section 160.085 and Minnesota Laws of 1976, Chapter 166.

Commissioner's Order No.	Location	Nature of Interest
63476	Plats 31-19	Definite location, width, access, temporary easement and building removal easement.
Recommended for Certification:	Certified	

Richard P. Braun
Commissioner of Transportation
Date: 1-23-80
By: F. C. Marshall
Assistant Commissioner of Transportation
Date: 1/23/80

I hereby certify that this plat was prepared by me or under my direct supervision and that I am a duly
Registered Land Surveyor under the Laws of the State of Minnesota; that this plat meets requirements
of Minnesota Statutes 1969, Section 161.16, Subdivision 2, Section 160.14, Subdivision 1 and Section
160.085, that parcel ownerships are correctly described and delineated on the plat, and that the
proposed right-of-way boundary lines are correctly designated on the plat.

Certified by John E. Jensen 10460 1-22-80
Registered Land Surveyor Reg. No. Date
Office of Surveying & Mapping

I hereby certify that this plat was surveyed by me or under my direct supervision and that I am a duly
Registered Land Surveyor under Laws of the State of Minnesota, that all measurements are correctly
shown on this plat, and that all monuments have been correctly placed as shown on this plat.

Certified by R.W. Thorntau 11562 3-4-80
Registered Land Surveyor Reg. No. Date
Mn/DOT District Office

SURVEY STANDARDS

- The plat values, azimuths and distances, are based on the project control survey system.
- The boundary monuments shown on this plat have been field checked for location. The standard deviation for the monument positions is 0.1 ft.
- The state plane coordinates shown on one monument are based on ties to national control monuments.
- Certificates of Location have been filed at the County Recorder's Office and/or the County Surveyor's Office for the section corner monuments shown on this plat.
- For details of this survey contact the Surveying and Mapping Section at the Minnesota Department of Transportation
DULUTH
Name of District

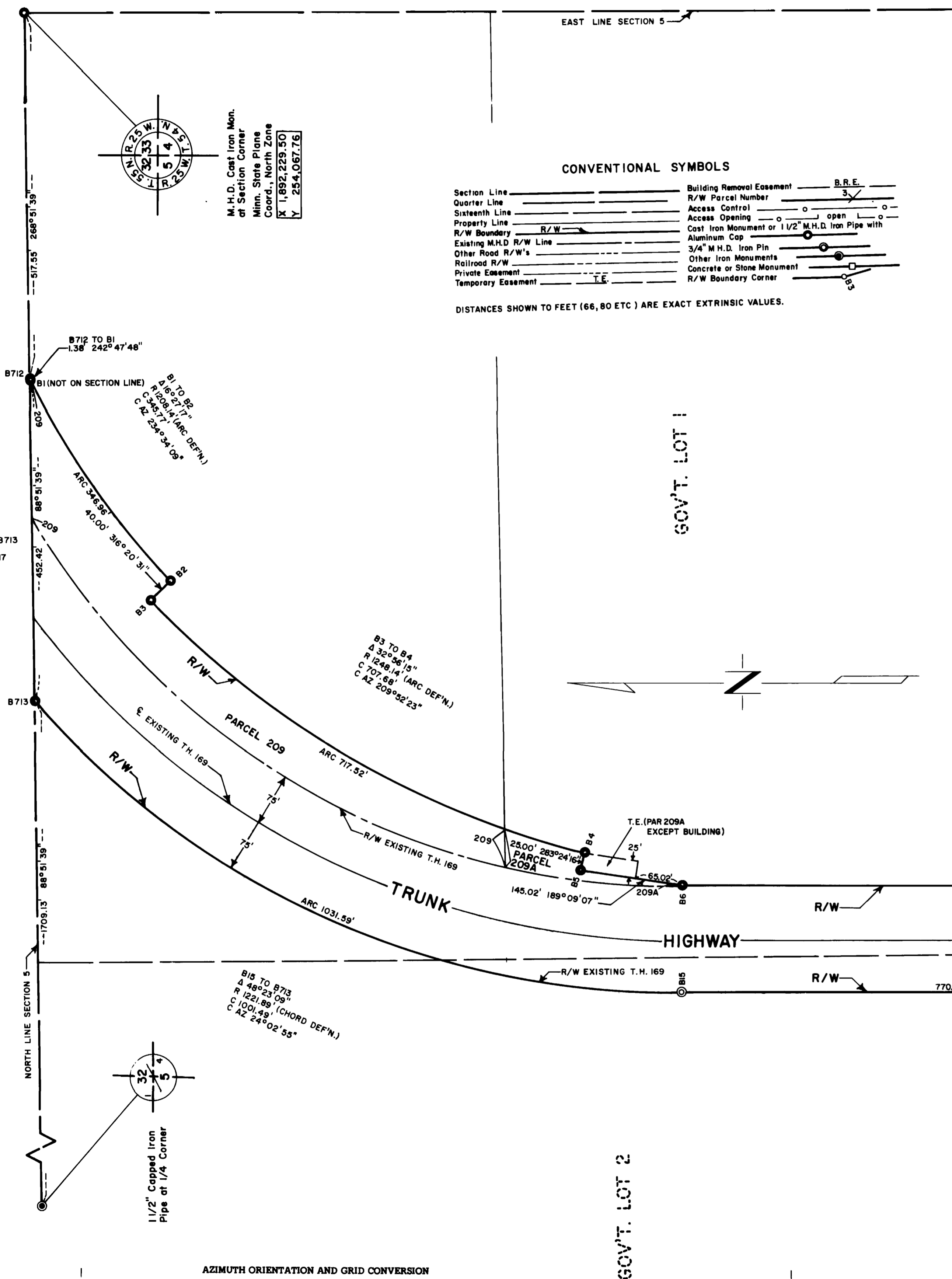
CONVENTIONAL SYMBOLS

Section Line	Building Removal Easement	B.R.E.
Quarter Line	R/W Parcel Number	3
Sixteenth Line	Access Control	o
Property Line	Access Opening	o
R/W Boundary	Cost Iron Monument or 1/2" M.H.D. Iron Pipe with Aluminum Cap	o
Existing M.H.D. R/W Line	3/4" M.H.D. Iron Pin	o
Other Road R/W's	Other Iron Monuments	o
Railroad R/W	Concrete or Stone Monument	o
Private Easement	R/W Boundary Corner	o
Temporary Easement		

DISTANCES SHOWN TO FEET (66, 80 ETC.) ARE EXACT EXTRINSIC VALUES.

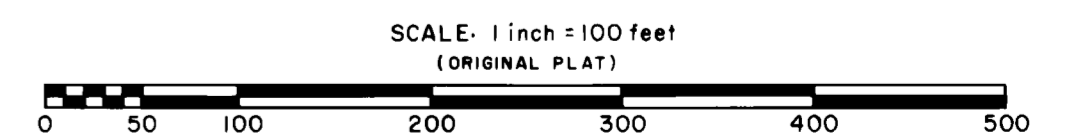
SE 1/4 --- NE 1/4

RIGHT OF WAY IN SECTION 5							
PARCEL	OWNER	LOCATION	TORREN'S CERTIFICATE NO.	NEW TH. R/W ACRES (MORE OR LESS)	TEMPORARY EASEMENT	BUILDING REMOVAL EASEMENT	PERMANENT R/W INTEREST
211	LLOYD G. LAPLANT	SW 1/4 NE 1/4		0.34			FEE
211B	UNO, M. POINT	SW 1/4 NE 1/4		0.16			FEE



AZIMUTH ORIENTATION AND GRID CONVERSION

Plat azimuths are oriented to Minnesota State Plane Coordinate System with 0 degrees 0 minutes 0 seconds being "GRID NORTH".
Plat distances are ground lengths and can be converted to Minnesota State Plane Grid lengths by multiplying Plat distances by 0.9999097



DOC. NO.
OFFICE OF COUNTY RECORDER
ITASCA COUNTY, MINN.

I HEREBY CERTIFY THAT THIS PLAT
HAS BEEN FILED IN THIS OFFICE
AT 2:20 O'CLOCK P.M. ON
March 14, 1980 IN
BOOK OF PAGE