

MINNESOTA DEPARTMENT OF TRANSPORTATION RIGHT OF WAY PLAT No. 31-18

STATE PROJECT NO. 3115 (169-35-22B)

IN THE NORTHEAST QUARTER OF SECTION 5, T.54 N., R.25 W.
ITASCA COUNTY, MINNESOTA

THE COMMISSIONER OF TRANSPORTATION IS HEREBY DESIGNATING THE DEFINITE LOCATION OF TRUNK HIGHWAY NO. 169 FROM 2.5 MILES TO 3.5 MILES SOUTH OF T.H. 2.

As shown on this plat prepared by the State of Minnesota Department of Transportation, is hereby certified as the official plat of that portion of said T.H. 169 within the designated portion of Section 5, and the Commissioner's Order therefor, pursuant to Minnesota Statutes 1969, section 161.16 subd. 2, section 160.14 subd. 1, and section 160.085 and Minnesota Laws of 1976, Chapter 166.

Commissioner's Order No.	Location	Nature of Interest
62951	Plats 31-17 to 31-18	Definite location, width, access, temporary easement and building removal easement.
Recommended for Certification.	Certified:	
	Richard P. Braun Commissioner of Transportation	
	<i>R.H. Sullivan</i> 7-17-79 R. H. Sullivan Director of R/W Operations	<i>F.C. Marshall</i> 7/17/79 F. C. Marshall Assistant Commissioner of Transportation

SURVEY STANDARDS

- The plat values, azimuths and distances, are based on the project control survey system.
- The boundary monuments shown on this plat have been field checked for location. The standard deviation for the monument positions is 0.1 ft.
- The state plane coordinates shown on one monument are based on ties to national control monuments.
- Certificates of Location have been filed at the County Recorder's Office and/or the County Surveyor's Office for the section corner monuments shown on this plat.
- For details of this survey contact the Surveying and Mapping Section at the Minnesota Department of Transportation
DULUTH
Name of District

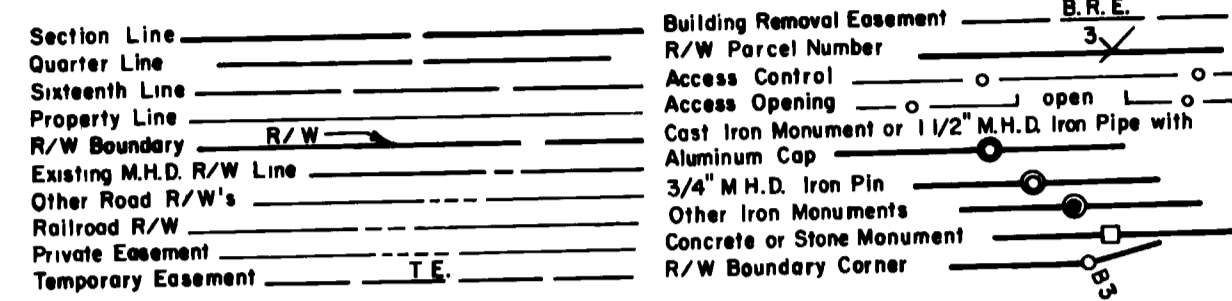
I hereby certify that this plat was prepared by me or under my direct supervision and that I am a duly Registered Land Surveyor under the Laws of the State of Minnesota; that this plat meets requirements of Minnesota Statutes 1969, Section 161.16, Subdivision 2, Section 160.14, Subdivision 1 and Section 160.085, that parcel ownerships are correctly described and delineated on the plat, and that the proposed right-of-way boundary lines are correctly designated on the plat.

Certified by *John E. Jensen* 10460 7-9-79
Registered Land Surveyor
Office of Surveying & Mapping

I hereby certify that this plat was surveyed by me or under my direct supervision and that I am a duly Registered Land Surveyor under Laws of the State of Minnesota; that all measurements are correctly shown on this plat; and that all monuments have been correctly placed as shown on this plat.

Certified by *R.W. Thorton* 11562 7-11-79
Registered Land Surveyor
Mr/DOT District Office

CONVENTIONAL SYMBOLS

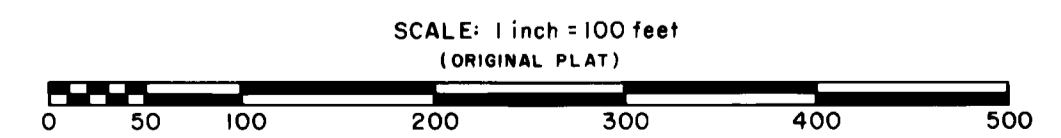


DISTANCES SHOWN TO FEET (66, 80 ETC.) ARE EXACT EXTRINSIC VALUES.

RIGHT OF WAY IN SECTION 5						
PARCEL	OWNER	LOCATION	TORREN'S CERTIFICATE NO.	ACRES (MORE OR LESS)		PERMANENT R/W INTEREST
				NEW TR. R/W	TEMPORARY EASEMENT	
209	Donald Gilbert	Gov't. Lot 1		1.61		Fee
209A	Margaret Trappe	Gov't. Lot 1		0.15	0.05	12-1-84 Fee
211	Lloyd G. LaPlant	SW 1/4 NE 1/4		0.26		Fee
211A	Hawkinson Construction Co., Inc.	SW 1/4 NE 1/4		0.06		Fee
211B	Uno M. Point	SW 1/4 NE 1/4		0.23		Fee

AZIMUTH ORIENTATION AND GRID CONVERSION

Plat azimuths are oriented to Minnesota State Plane Coordinate System with 0 degrees 0 minutes 0 seconds being "GRID NORTH".
Plat distances are ground lengths and can be converted to Minnesota State Plane Grid lengths by multiplying Plat distances by 0.9999097



DOC. NO. 334372

OFFICE OF COUNTY RECORDER
ITASCA COUNTY, MINN.

I HEREBY CERTIFY THAT THIS PLAT HAS BEEN FILED IN THIS OFFICE AT 12:00 CLOCK P.M. ON August 8, 1979 IN BOOK OF PAGE .
Annie S. Brunton
COUNTY RECORDER