

MINNESOTA DEPARTMENT OF TRANSPORTATION
RIGHT OF WAY PLAT NO. 31-65

CONTROL SECTION NO. 3115 (169=35)902
IN THE NORTH HALF OF SECTION 30, T. 54 N., R. 25 W.,
ITASCA COUNTY, MINNESOTA

THE COMMISSIONER OF TRANSPORTATION IS HEREBY DESIGNATING THE DEFINITE LOCATION OF TRUNK HIGHWAY NO. 169 FROM 10 KILOMETERS SOUTH OF GRAND RAPIDS TO GRAND RAPIDS

as shown on this plat prepared by the State of Minnesota Department of Transportation is hereby certified as the official plat of that portion of said T.H. 169 within the designated portion of Section 30 and the Commissioner's Order therefor, pursuant to Minnesota Statutes, section 160.065, section 160.14 subd. 1, section 161.16 subd. 2, and section 161.18.

It is further ordered that it is necessary to acquire all trees, shrubs, grass and herbage within the Right of Way of said Trunk Highway, and to keep and have exclusive control of the same.

Commissioner's Order No. 84308 Location PLAT 31-65 Nature of Interest Definite location, width, access, temporary easement and building removal easement.

Certified by Elwyn Tranklerberg, Commissioner of Transportation, Date 3-8-00, by Merritt Fritz, Director, Office of Land Management.

I hereby certify that this plat was prepared by me or under my direct supervision and that I am a duly Registered Land Surveyor under the Laws of the State of Minnesota; that this plat meets requirements of Minnesota Statutes, section 160.065, section 160.14 subd. 1, section 161.16 subd. 2, and section 161.18; that parcel descriptions are correctly described and delineated on the plat, and that the proposed right-of-way boundary lines are correctly delineated on the plat.

Certified by David K. Kowalek, Registered Land Surveyor, License No. 12042, Date 3-7-2000, Office of Land Management.

I hereby certify that this plat was surveyed by me or under my direct supervision and that I am a duly Registered Land Surveyor under the Laws of the State of Minnesota; that all measurements are correctly shown on this plat, that all monuments have been correctly placed as shown on this plat, and that certificates of location for the monumented public land survey owners as shown on this plat are on file in the County Recorder's Office.

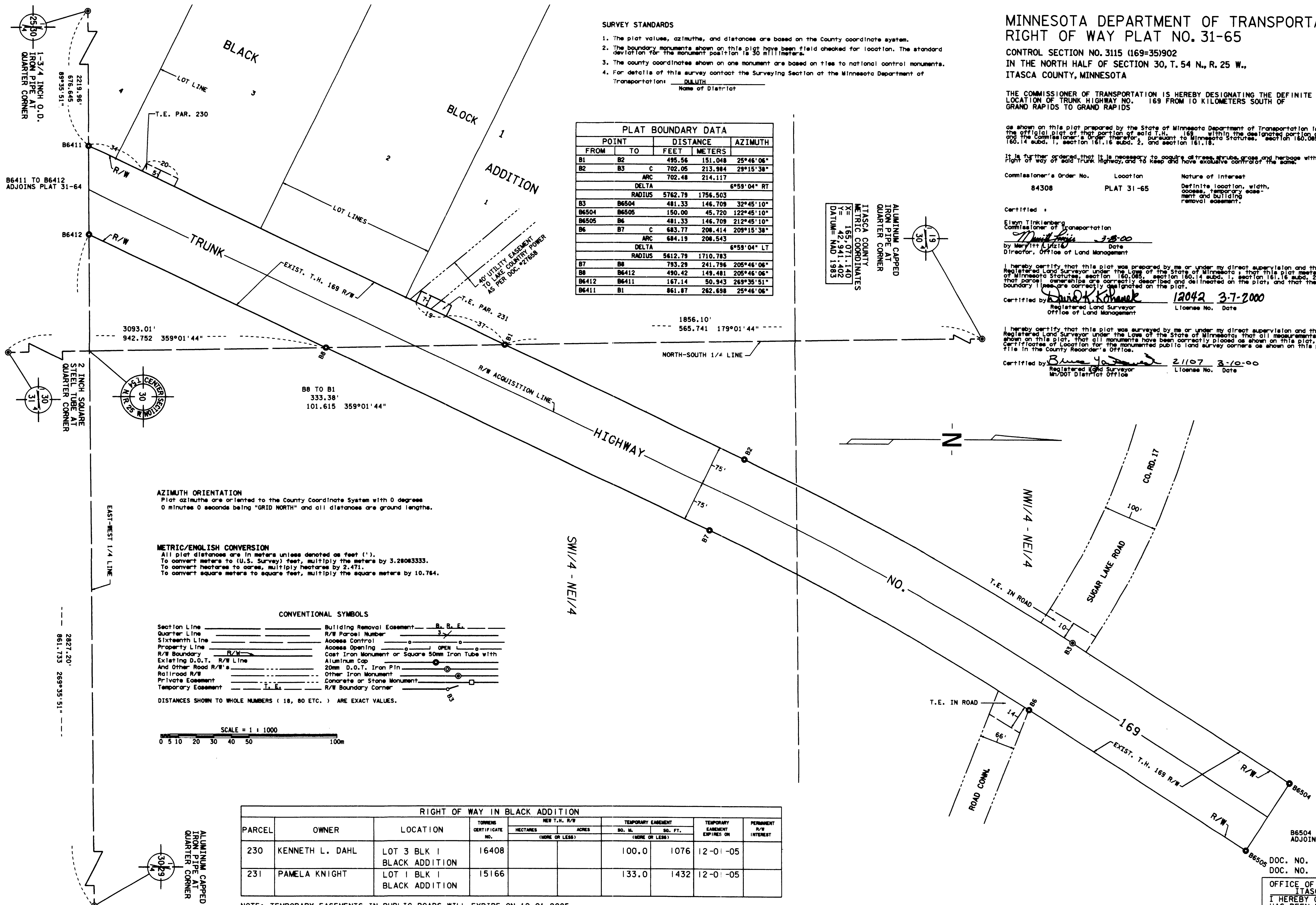
Certified by Bruce J. Johnson, Registered Land Surveyor, License No. 21107, Date 3-10-00, W/DOT District Office.

SURVEY STANDARDS

- The plat values, azimuths, and distances are based on the County coordinate system.
- The boundary monuments shown on this plat have been field checked for location. The standard deviation for the monument position is 30 millimeters.
- The county coordinates shown on one monument are based on ties to national control monuments.
- For details of this survey contact the Surveying Section at the Minnesota Department of Transportation: DULUTH Name of District

PLAT BOUNDARY DATA				
POINT FROM	POINT TO	FEET	METERS	AZIMUTH
B1	B2	495.56	151.048	25°46'06"
B2	B3	702.05	213.984	29°15'38"
		ARC	702.48	214.117
		DELTA		6°59'04" RT
		RADIUS	5762.79	1756.503
B3	B6504	481.33	146.709	32°45'10"
B6504	B6505	150.00	45.720	122°45'10"
B6505	B6	481.33	146.709	212°45'10"
B6	B7	683.77	208.414	209°19'38"
		ARC	684.19	208.543
		DELTA		6°59'04" LT
		RADIUS	5612.78	1710.783
B7	B8	733.29	221.796	205°46'06"
B8	B6412	490.42	149.481	205°46'06"
B6412	B6411	167.14	50.943	269°35'51"
B6411	B1	861.87	262.698	25°46'06"

ALUMINUM CAPPED IRON PIPE AT QUARTER CORNER
ITASCA COUNTY METRIC COORDINATES
N = 155,071.140
E = 97,941.400
DATUM = NAD 1983

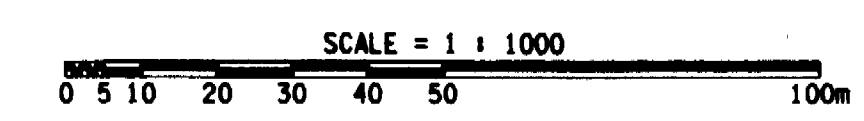


AZIMUTH ORIENTATION
Plat azimuths are oriented to the County Coordinate System with 0 degrees 0 minutes 0 seconds being "GRID NORTH" and all distances are ground lengths.

METRIC/ENGLISH CONVERSION
All plat distances are in meters unless denoted as feet (').
To convert meters to (U.S. Survey) feet, multiply the meters by 3.2808333.
To convert hectares to acres, multiply hectares by 2.471.
To convert square meters to square feet, multiply the square meters by 10.764.

CONVENTIONAL SYMBOLS

Section Line	Building Removal Easement	B. R. E.
Quarter Line	R/W Parcel Number	3
Sixteenth Line	Access Control	
Property Line	Access Opening	OPEN
R/W Boundary	Cast Iron Monument or Square 50mm Iron Tube with Aluminum Cap	
Existing D.O.T. R/W Line	20mm D.O.T. Iron Pin	
And Other Road R/W's	Other Iron Monument	
Railroad R/W	Concrete or Stone Monument	
Private Easement	R/W Boundary Corner	
Temporary Easement		



RIGHT OF WAY IN BLACK ADDITION									
PARCEL	OWNER	LOCATION	TORRENS CERTIFICATE NO.	NEW T.H. R/W		TEMPORARY EASEMENT		TEMPORARY EASEMENT EXPIRES ON	PERMANENT R/W INTEREST
				HECTARES (MORE OR LESS)	ACRES (MORE OR LESS)	SO. M. (MORE OR LESS)	SO. FT. (MORE OR LESS)		
230	KENNETH L. DAHL	LOT 3 BLK 1 BLACK ADDITION	16408			100.0	1076	12-01-05	
231	PAMELA KNIGHT	LOT 1 BLK 1 BLACK ADDITION	15166			133.0	1432	12-01-05	

NOTE: TEMPORARY EASEMENTS IN PUBLIC ROADS WILL EXPIRE ON 12-01-2005

B6504 TO B6505 ADJOINS PLAT 31-66
DOC. NO. 39941 TORRENS
DOC. NO. 513780 ABSTRACT
OFFICE OF COUNTY RECORDER
ITASCA COUNTY, MINN.
I HEREBY CERTIFY THAT THIS PLAT HAS BEEN FILED IN THIS OFFICE AT 10 O'CLOCK A.M. ON MARCH 20, 2000 IN BOOK OF , PAGE
COUNTY RECORDER