

MINNESOTA DEPARTMENT OF TRANSPORTATION
RIGHT OF WAY PLAT NO. 31-59

CONTROL SECTION NO. 3115(169=35-24)
IN THE SOUTHEAST QUARTER OF SECTION 1, T. 53 N., R. 26 W.,
IN THE NORTHEAST QUARTER OF SECTION 12, T. 53 N., R. 26 W.,
ITASCA COUNTY, MINNESOTA

THE COMMISSIONER OF TRANSPORTATION IS HEREBY DESIGNATING THE DEFINITE LOCATION OF TRUNK HIGHWAY NO. 169 FROM THE SOUTH ITASCA COUNTY LINE TO C.S.A.H. 67

PLAT BOUNDARY DATA				
POINT		DISTANCE		AZIMUTH
FROM	TO	FEET	METERS	
B1	B2	397.12	121.043	358°46'26"
B2	B3	55.51	16.918	108°11'10"
B3	B5904	1178.31	359.149	6°38'42"
B5904	B5905	175.23	53.410	103°44'45"
B5905	B6	1192.15	363.369	186°38'42"
B6	B5907	1275.58	388.797	186°38'42"
B5907	B5908	173.88	53.000	276°38'42"
B5908	B1	928.81	283.102	6°38'42"

CONVENTIONAL SYMBOLS

Section Line	Building Removal Easement	B. R. E.
Quarter Line	R/W Parcel Number	3
Sixteenth Line	Access Control	○
Property Line	Access Opening	○ OPEN
R/W Boundary	Cast Iron Monument or Square 50mm Iron Tube with Aluminum Cap	⊙
Existing D.O.T. R/W Line	20mm D.O.T. Iron Pin	⊙
And Other Road R/W's	Other Iron Monument	⊙
Railroad R/W	Concrete or Stone Monument	⊙
Private Easement	R/W Boundary Corner	⊙
Temporary Easement	T. E.	○

DISTANCES SHOWN TO WHOLE NUMBERS (18, 80 ETC.) ARE EXACT VALUES.

as shown on this plat prepared by the State of Minnesota Department of Transportation is hereby certified as the official plat of that portion of said T.H. 169 within the designated portion of Sections 1 & 12 and the Commissioner's Order therefor pursuant to Minnesota Statutes, section 160.085, section 160.14 subd. 1, section 161.16 subd. 2, and section 161.18.

It is further ordered that it is necessary to acquire all trees, shrubs, grass and herbage within the right of way of said trunk highway, and to keep and have exclusive control of the same.

It is further ordered that the right to erect and maintain temporary snow fences under Minnesota Statutes, Section 117.21 is hereby disclaimed on the land which will be involved.

Commissioner's Order No.	Location	Nature of Interest
83438	PLAT 31-59	Definite location, width, access, temporary easement and building removal easement.

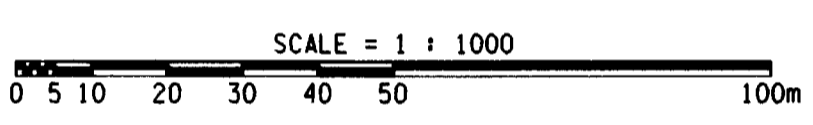
Certified by
James N. Denn
Commissioner of Transportation
J. N. Denn 12-24-98
by Merritt Linzle Date
Director, Office of Land Management

I hereby certify that this plat was prepared by me or under my direct supervision and that I am a duly Registered Land Surveyor under the Laws of the State of Minnesota; that this plat meets requirements of Minnesota Statutes, section 160.085, section 160.14 subd. 1, section 161.16 subd. 2, and section 161.18; that parcel ownerships are correctly described and delineated on the plat; and that the proposed right-of-way boundary lines are correctly designated on the plat.

Certified by *Ronald J. Olson* 11009 12/21/98
Registered Land Surveyor License No. Date
Office of Land Management

I hereby certify that this plat was surveyed by me or under my direct supervision and that I am a duly Registered Land Surveyor under the Laws of the State of Minnesota; that all measurements are correctly shown on this plat; that all monuments have been correctly placed as shown on this plat; and that Certificates of Location for the monumented public land survey corners as shown on this plat are on file in the County Recorder's Office.

Certified by *Bruce J. David* 21107 1-4-99
Registered Land Surveyor License No. Date
Mn/DOT District Office

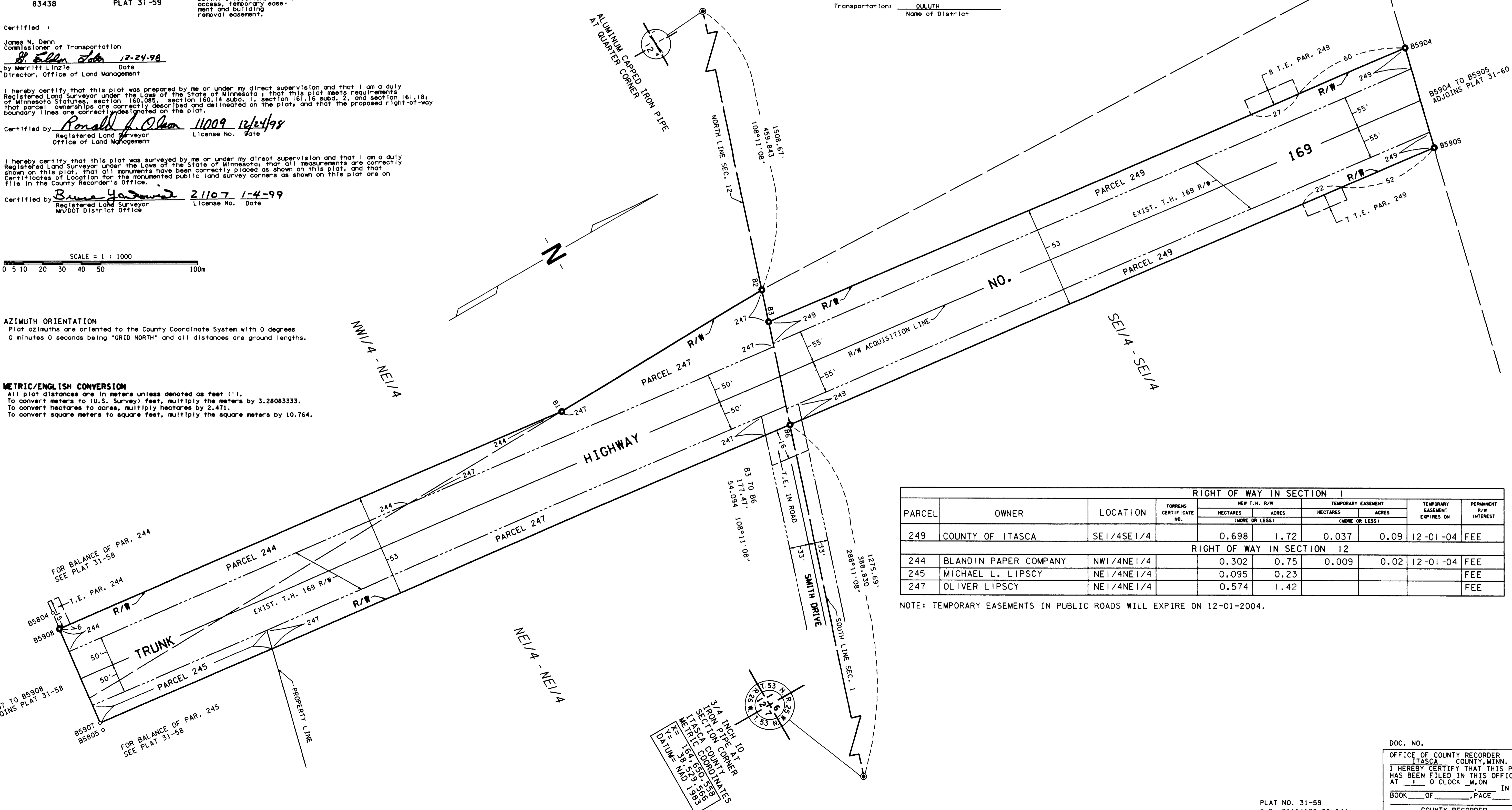


AZIMUTH ORIENTATION
Plat azimuths are oriented to the County Coordinate System with 0 degrees 0 minutes 0 seconds being "GRID NORTH" and all distances are ground lengths.

METRIC/ENGLISH CONVERSION
All plat distances are in meters unless denoted as feet ('').
To convert meters to (U.S. Survey) feet, multiply the meters by 3.28083333.
To convert hectares to acres, multiply hectares by 2.471.
To convert square meters to square feet, multiply the square meters by 10.764.

SURVEY STANDARDS

- The plat values, azimuths, and distances are based on the County coordinate system.
- The boundary monuments shown on this plat have been field checked for location. The standard deviation for the monument position is 30 millimeters.
- The county coordinates shown on one monument are based on ties to national control monuments.
- For details of this survey contact the Surveying Section at the Minnesota Department of Transportation: DULUTH
Name of District



PARCEL	OWNER	LOCATION	TOWNSHIP CERTIFICATE NO.	NEW T.H. R/W		TEMPORARY EASEMENT		TEMPORARY EASEMENT EXPIRES ON	PERMANENT R/W INTEREST
				HECTARES (MORE OR LESS)	ACRES (MORE OR LESS)	HECTARES (MORE OR LESS)	ACRES (MORE OR LESS)		
249	COUNTY OF ITASCA	SE1/4SE1/4		0.698	1.72	0.037	0.09	12-01-04	FEE
RIGHT OF WAY IN SECTION 12									
244	BLANDIN PAPER COMPANY	NW1/4NE1/4		0.302	0.75	0.009	0.02	12-01-04	FEE
245	MICHAEL L. LIPSCY	NE1/4NE1/4		0.095	0.23				FEE
247	OLIVER LIPSCY	NE1/4NE1/4		0.574	1.42				FEE

NOTE: TEMPORARY EASEMENTS IN PUBLIC ROADS WILL EXPIRE ON 12-01-2004.

3/4 INCH I.D. IRON PIPE AT SECTION CORNER ITASCA COUNTY METRIC COORDINATES
X = 164,520.2558
Y = 56,529.2558
DATE: MAR 1, 1995

DOC. NO.
OFFICE OF COUNTY RECORDER
ITASCA COUNTY, MINN.
I HEREBY CERTIFY THAT THIS PLAT HAS BEEN FILED IN THIS OFFICE AT 1 O'CLOCK M ON IN IN BOOK OF PAGE
COUNTY RECORDER