

RIGHT OF WAY IN SECTION 4							
PARCEL	OWNER	LOCATION	TORREN'S CERTIFICATE NO.	NEW T.H. R/W ACRES (MORE OR LESS)	TEMPORARY EASEMENT ACRES (MORE OR LESS)	BUILDING REMOVAL EASEMENT EXPIRES ON	PERMANENT R/W INTEREST
210B	G.J. ZELLER	SW1/4SE1/4		3.69	0.36	12-1-93	FEE
210C	MARVIN A. CHRISTENSON	NE1/4SE1/4		0.10			FEE
212	JACQUELINE M. OLSON	E1/2SE1/4		10.82	0.63	12-1-93	FEE
RIGHT OF WAY IN SECTIONS 3 & 4							
213	CLARENCE McINTOSH	SE1/4NE1/4 SECTION 4 SW1/4NW1/4 GOV'T LOT 4 SECTION 3		9.76	1.03	12-1-93	FEE

MINNESOTA DEPARTMENT OF TRANSPORTATION RIGHT OF WAY PLAT NO. 31-25

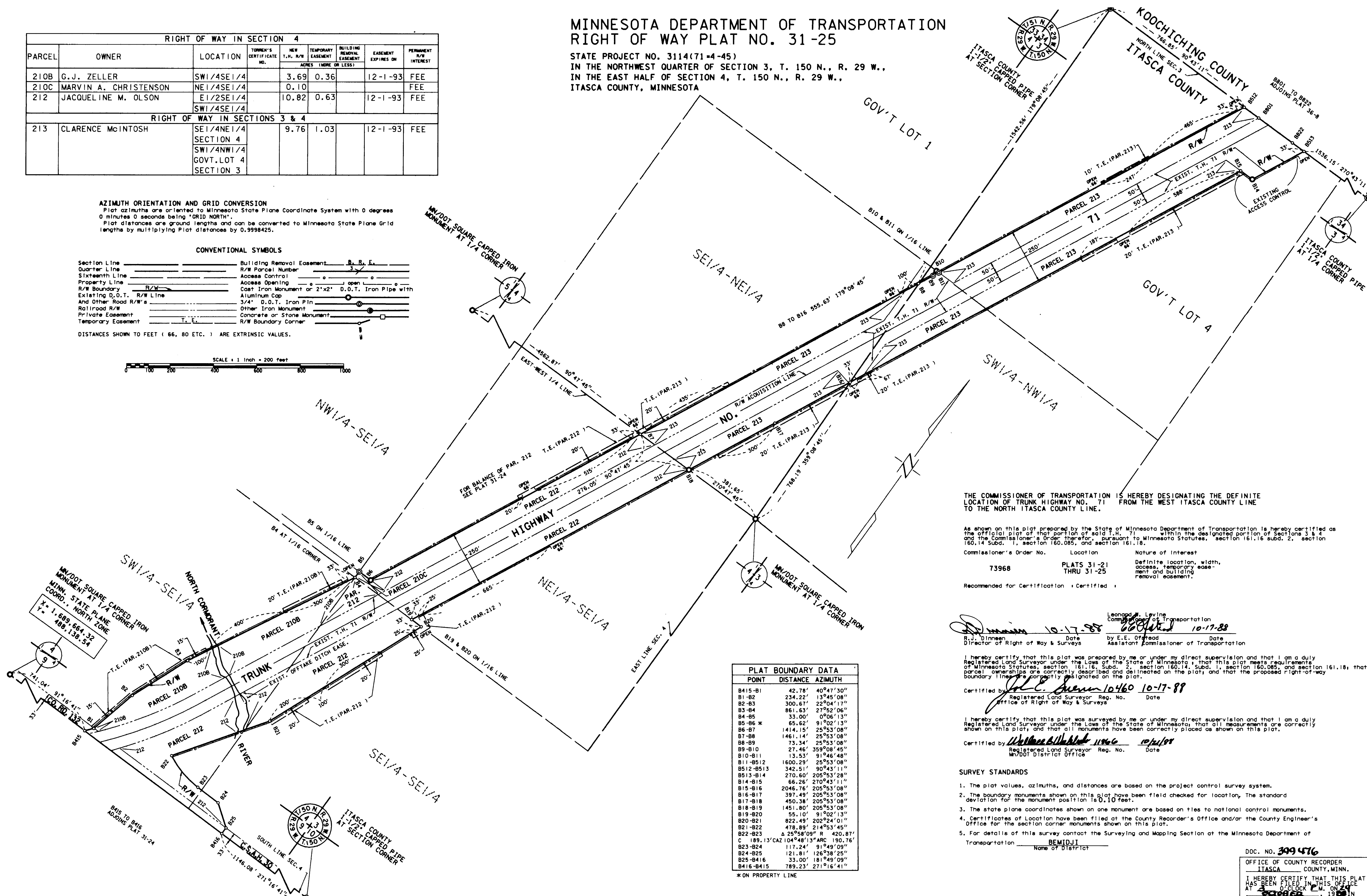
STATE PROJECT NO. 3114(71-4-45)
IN THE NORTHWEST QUARTER OF SECTION 3, T. 150 N., R. 29 W.,
IN THE EAST HALF OF SECTION 4, T. 150 N., R. 29 W.,
ITASCA COUNTY, MINNESOTA

AZIMUTH ORIENTATION AND GRID CONVERSION
Plat azimuths are oriented to Minnesota State Plane Coordinate System with 0 degrees 0 minutes 0 seconds being "GRID NORTH".
Plat distances are ground lengths and can be converted to Minnesota State Plane Grid lengths by multiplying Plat distances by 0.9998425.

CONVENTIONAL SYMBOLS

Section Line	Building Removal Easement	R, B, E.
Quarter Line	R/W Parcel Number	3
Sixteenth Line	Access Control	open
Property Line	Access Opening	open
R/W Boundary	Cost Iron Monument or 2"x2" D.O.T. Iron Pipe with Aluminum Cap	3/4" D.O.T. Iron Pin
Existing D.O.T. R/W Line	Other Iron Monument	Concrete or Stone Monument
And Other Road R/W's	Private Easement	R/W Boundary Corner
Railroad R/W	Temporary Easement	

DISTANCES SHOWN TO FEET (66, 80 ETC.) ARE EXTRINSIC VALUES.



THE COMMISSIONER OF TRANSPORTATION IS HEREBY DESIGNATING THE DEFINITE LOCATION OF TRUNK HIGHWAY NO. 71 FROM THE WEST ITASCA COUNTY LINE TO THE NORTH ITASCA COUNTY LINE.

As shown on this plat prepared by the State of Minnesota Department of Transportation is hereby certified as the official plat of that portion of said T.H. 71 within the designated portion of sections 3 & 4 and the Commissioner's Order therefor, pursuant to Minnesota Statutes, section 161.16 subd. 2, section 160.14 subd. 1, section 160.085, and section 161.18.

Commissioner's Order No.	Location	Nature of Interest
73968	PLATS 31-21 THRU 31-25	Definite location, width, access, temporary easement and building removal easement.

Recommended for Certification: Certified

Leonard J. Levine
Commissioner of Transportation
10-17-88
R.J. Dineen
Director of Right of Way & Surveys
10-17-88
E.E. O'Keefe
Assistant Commissioner of Transportation

I hereby certify that this plat was prepared by me or under my direct supervision and that I am a duly Registered Land Surveyor under the Laws of the State of Minnesota, that this plat meets requirements of Minnesota Statutes, section 161.16, Subd. 2, section 160.14, Subd. 1, section 160.085, and section 161.18; that parcel ownerships are correctly described and delineated on the plat; and that the proposed right-of-way boundary lines are correctly designated on the plat.

Certified by: *[Signature]* 10-17-88
Registered Land Surveyor Reg. No. 10460 Date 10-17-88
Office of Right of Way & Surveys

I hereby certify that this plat was surveyed by me or under my direct supervision and that I am a duly Registered Land Surveyor under the Laws of the State of Minnesota, that all measurements are correctly shown on this plat, and that all monuments have been correctly placed as shown on this plat.

Certified by: *[Signature]* 10-17-88
Registered Land Surveyor Reg. No. 11066 Date 10-17-88
MvDOT District Office

SURVEY STANDARDS

- The plat values, azimuths, and distances are based on the project control survey system.
- The boundary monuments shown on this plat have been field checked for location. The standard deviation for the monument position is 0.10 feet.
- The state plane coordinates shown on one monument are based on ties to national control monuments.
- Certificates of Location have been filed at the County Recorder's Office and/or the County Engineer's Office for the section corner monuments shown on this plat.
- For details of this survey contact the Surveying and Mapping Section at the Minnesota Department of Transportation. BEMIDJII Name of District

PLAT BOUNDARY DATA		
POINT	DISTANCE	AZIMUTH
B415-B1	42.78'	40°21'30"
B1-B2	234.22'	13°45'08"
B2-B3	300.67'	22°04'17"
B3-B4	861.63'	27°52'06"
B4-B5	33.00'	0°06'13"
B5-B6*	65.62'	91°02'13"
B6-B7	1414.15'	25°53'08"
B7-B8	1461.14'	25°53'08"
B8-B9	73.34'	25°53'08"
B9-B10	27.46'	359°08'45"
B10-B11	13.33'	91°46'48"
B11-B512	1600.29'	25°53'08"
B512-B513	342.51'	90°43'11"
B513-B14	270.60'	205°53'28"
B14-B15	66.26'	210°43'11"
B15-B16	2046.76'	205°53'08"
B16-B17	397.49'	205°53'08"
B17-B18	450.38'	205°53'08"
B18-B19	1451.80'	205°53'08"
B19-B20	55.10'	91°02'13"
B20-B21	822.49'	202°24'01"
B21-B22	478.89'	214°53'45"
B22-B23	Δ 25°58'09" R 420.87'	
C	0.89, 13°CAZ 104°48'13" ARC 190.76'	
B23-B24	117.24'	91°49'09"
B24-B25	121.81'	126°38'25"
B25-B416	33.00'	181°49'09"
B416-B415	789.23'	271°16'41"

*ON PROPERTY LINE

DOC. NO. 399 476

OFFICE OF COUNTY RECORDER
ITASCA COUNTY, MINN.
I HEREBY CERTIFY THAT THIS PLAT HAS BEEN FILED IN THIS OFFICE AT 07:00 P.M. ON 10-17-88
BOOK 138 PAGE 13
COUNTY RECORDER