

THE COMMISSIONER OF TRANSPORTATION IS HEREBY DESIGNATING THE DEFINITE LOCATION OF TRUNK HIGHWAY NO. 65 FROM BUCK LAKE TO TOGO

as shown on this plat prepared by the State of Minnesota Department of Transportation is hereby partitioned as the official plat of that portion of said Trunk Highway No. 65 within the designated portion of Sections 31 & 36 and the Commissioner's Order therefor pursuant to Minnesota Statutes, Section 160.085, Section 160.14 subd. 1, Section 161.16 subd. 2, and Section 161.18.

It is further ordered that it is necessary to acquire all trees, shrubs, grass and herbage within the right of way of said Trunk Highway, and to keep and have the exclusive control of the same.

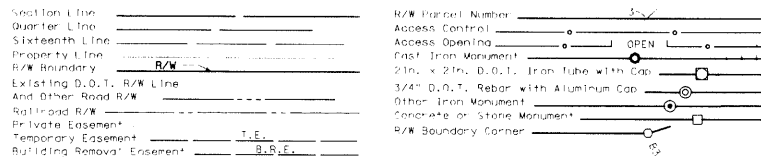
Commissioner's Order No. 90859
 Location PLAT 31-137
 Nature of Interest: Define location, width, access, temporary easement and building removal easement.

Certified by *Thomas K. Somers* 7/9/09
 Commissioner of Transportation
 by *Michael J. Swansberg* Date
 Assistant Director, Office of Land Management

I hereby certify that this plat was surveyed and prepared by me or under my direct supervision and that I am a duly Licensed Land Surveyor under the Laws of the State of Minnesota; that all measurements are correctly shown on this plat; that all monuments have been correctly placed as shown on this plat; that Certificates of Location for the monumented Public Land Survey corners as shown on this plat are on file in the County Recorder's Office (if required under Minnesota Statutes, Section 160.15) and/or the County Surveyor's Office; that this plat meets the requirements of Minnesota Statutes, Section 160.085, Section 160.14 subd. 1, Section 161.16 subd. 2, and Section 161.18; that the parcel ownerships are correctly described and delineated on the plat; and that the proposed right of way boundary lines are correctly designated on the plat.

Certified by *Robey V. Anderson* 7/13/09
 License No. 41204 Date
 Mn/DOT District Office

CONVENTIONAL SYMBOLS



DISTANCES SHOWN IN FEET (66, 80 ETC.) ARE EXACT VALUES.

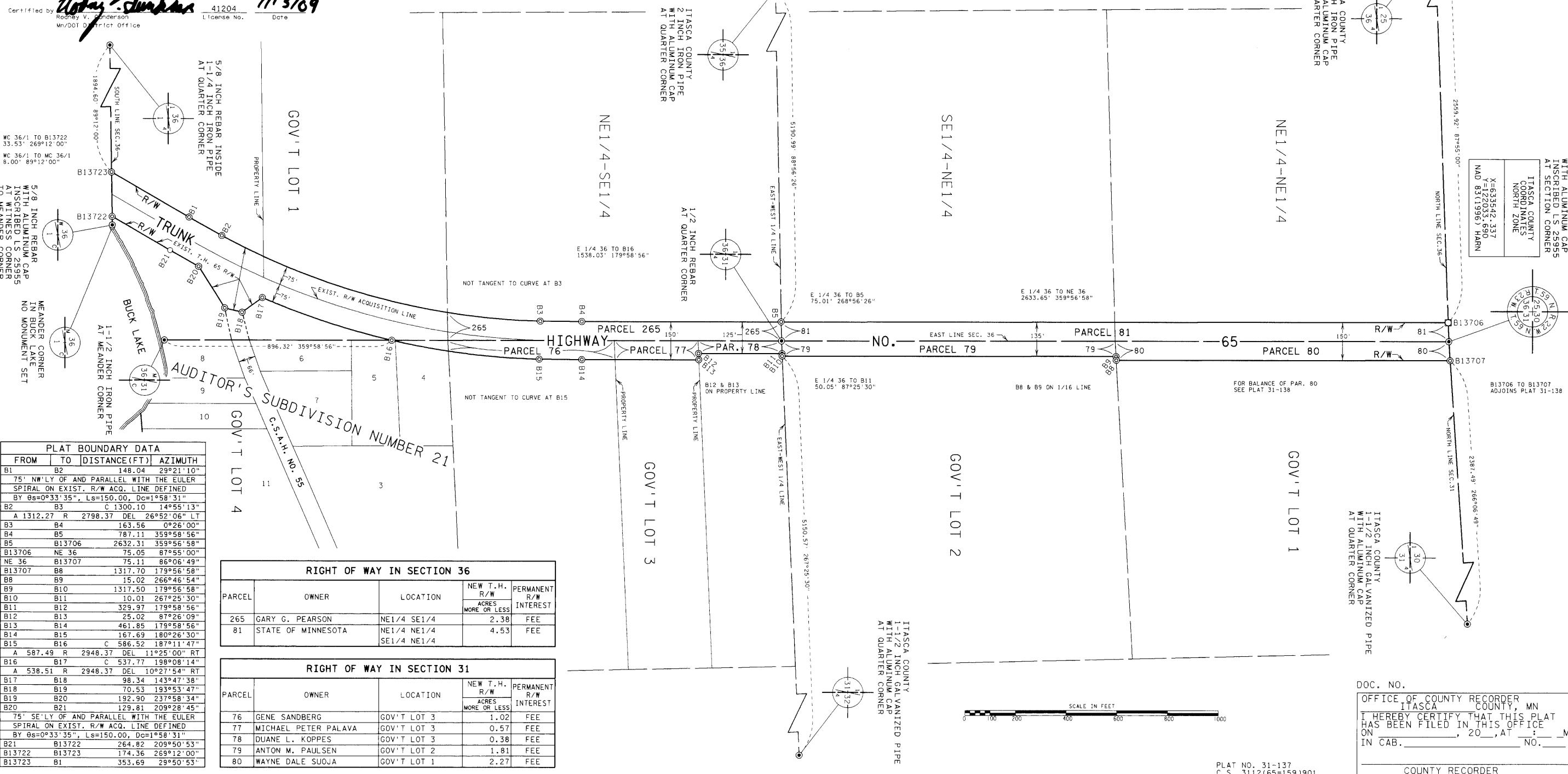
SURVEY STANDARDS

- The plat values, azimuths, and distances are based on the County coordinate system.
- The boundary monuments shown on this plat have been field checked for location. The standard deviation for the monument position is 0.10 feet.
- The county coordinates shown on one monument are based on ties to national control monuments.
- For details of this survey contact the Surveying Section of the Minnesota Department of Transportation: DULUTH
Name of District

AZIMUTH ORIENTATION AND GRID CONVERSION
 Plat azimuths are oriented to the County Coordinate System with 0 degrees 0 minutes 0 seconds being "GRID NORTH". Plat distances are ground lengths.

MINNESOTA DEPARTMENT OF TRANSPORTATION
 RIGHT OF WAY PLAT NO. 31-137

CONTROL SECTION NO. 3112 (65=159) 901
 IN GOVERNMENT LOTS 1,2,3 AND 4 OF SECTION 31, T.59 N., R.22 W.,
 IN THE NORTHEAST QUARTER OF THE NORTHEAST QUARTER OF SECTION 36, T.59 N., R.23 W.,
 IN THE SOUTHEAST QUARTER OF THE NORTHEAST QUARTER OF SECTION 36, T.59 N., R.23 W.,
 IN THE NORTHEAST QUARTER OF THE SOUTHEAST QUARTER OF SECTION 36, T.59 N., R.23 W.,
 IN GOVERNMENT LOT 1 OF SECTION 36, T.59 N., R.23 W.,
 ITASCA COUNTY, MINNESOTA



WC 36/1 TO B13722
 33.53' 269°12'00"
 WC 36/1 TO WC 36/1
 8.00' 89°12'00"

5/8 INCH REBAR WITH ALUMINUM CAP INScribed IN S. 5965 AT WITNESS CORNER TO MEANDER CORNER

FROM	TO	DISTANCE (FT)	AZIMUTH
B1	B2	148.04	29°21'10"
75° NW'LY OF AND PARALLEL WITH THE EULER SPIRAL ON EXIST. R/W ACQ. LINE DEFINED BY BS=0°33'35", Ls=150.00, Dc=1°58'31"			
B2	B3	C 1300.10	14°55'13"
A	B3	R 2798.37	DEL 26°52'06" LT
B3	B4	163.56	0°26'00"
B4	B5	787.11	359°58'56"
B5	B13706	2632.31	359°58'58"
B13706	NE 36	75.05	87°55'00"
NE 36	B13707	75.11	86°06'49"
B13707	B8	1317.70	179°56'58"
B8	B9	15.02	266°46'54"
B9	B10	1317.50	179°56'58"
B10	B11	10.01	267°25'30"
B11	B12	329.97	179°58'56"
B12	B13	25.02	87°26'09"
B13	B14	461.85	179°58'56"
B14	B15	167.69	180°26'30"
B15	B16	C 586.52	187°11'47"
A	B17	R 2948.37	DEL 11°25'00" RT
B16	B17	C 537.77	198°08'14"
A	B18	R 2948.37	DEL 10°27'54" RT
B17	B18	98.34	143°47'38"
B18	B19	70.53	193°53'47"
B19	B20	192.90	237°58'34"
B20	B21	129.81	209°28'45"
75° SE'LY OF AND PARALLEL WITH THE EULER SPIRAL ON EXIST. R/W ACQ. LINE DEFINED BY BS=0°33'35", Ls=150.00, Dc=1°58'31"			
B21	B13722	264.82	209°50'53"
B13722	B13723	174.36	269°12'00"
B13723	B1	353.69	29°50'53"

RIGHT OF WAY IN SECTION 36				
PARCEL	OWNER	LOCATION	NEW T.H. R/W ACRES MORE OR LESS	PERMANENT R/W INTEREST
265	GARY G. PEARSON	NE1/4 SE1/4	2.38	FEE
81	STATE OF MINNESOTA	NE1/4 NE1/4 SE1/4 NE1/4	4.53	FEE

RIGHT OF WAY IN SECTION 31				
PARCEL	OWNER	LOCATION	NEW T.H. R/W ACRES MORE OR LESS	PERMANENT R/W INTEREST
76	GENE SANDBERG	GOV'T LOT 3	1.02	FEE
77	MICHAEL PETER PALAVA	GOV'T LOT 3	0.57	FEE
78	DUANE L. KOPPEL	GOV'T LOT 3	0.38	FEE
79	ANTON M. PAULSEN	GOV'T LOT 2	1.81	FEE
80	WAYNE DALE SUOJA	GOV'T LOT 1	2.27	FEE

5/8 INCH REBAR WITH ALUMINUM CAP INScribed IN S. 5965 AT SECTION CORNER

ITASCA COUNTY COORDINATES NORTH ZONE
 X=633542.337
 Y=122033.690
 NAD 83(1996) HARN

ITASCA COUNTY 1-1/2 INCH GALVANIZED PIPE WITH ALUMINUM CAP AT QUARTER CORNER

DOC. NO. _____
 OFFICE OF COUNTY RECORDER
 ITASCA COUNTY, MN
 I HEREBY CERTIFY THAT THIS PLAT HAS BEEN FILED IN THIS OFFICE ON _____, 20____, AT _____ M IN CAB. _____ NO. _____
 COUNTY RECORDER



PLAT NO. 31-137
 C.S. 3112(65=159)901