

THE COMMISSIONER OF TRANSPORTATION IS HEREBY DESIGNATING THE DEFINITE LOCATION OF TRUNK HIGHWAY NO. 65 FROM BUCK LAKE TO TOGO

as shown on this plat prepared by the State of Minnesota Department of Transportation is hereby certified as the official plat of that portion of said Trunk Highway No. 65 within the designated portion of Sections 19 & 20 and the Commissioner's Order therefor, pursuant to Minnesota Statutes, Section 160.085, Section 160.14 subd. 1, Section 161.16 subd. 2, and Section 161.18.

It is further ordered that it is necessary to acquire all trees, shrubs, grass and herbage within the right of way of said Trunk Highway, and to keep and have the exclusive control of the same.

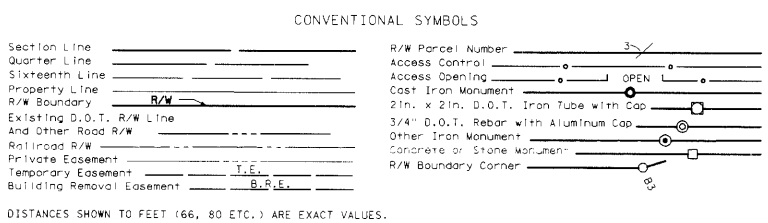
Commissioner's Order No. 90882 Location PLAT 31-151 Nature of Interest Definite location, width, access, temporary easement and building removal easement.

Certified:

Thomas K. Sorel, Commissioner of Transportation
M. J. Stensberg 7/27/09
 by J. Stensberg, Assistant Director, Office of Land Management

I hereby certify that this plat was surveyed and prepared by me or under my direct supervision and that I am a duly Licensed Land Surveyor under the Laws of the State of Minnesota; that all measurements are correctly shown on this plat; that all monuments have been correctly placed as shown on this plat; that Certificates of Location for the monuments Public Land Survey corners as shown on this plat are on file in the County Recorder's Office (if required under Minnesota Statutes, Section 160.15) and/or the County Surveyor's Office; that this plat meets the requirements of Minnesota Statutes, Section 160.085, Section 160.14 subd. 1, Section 161.16 subd. 2, and Section 161.18; that the parcel ownerships are correctly described and delineated on the plat; and that the proposed right of way boundary lines are correctly designated on the plat.

Certified by *Rooney V. Anderson* 41204 7/28/09
 Rooney V. Anderson, License No. Date
 Mn/DOT District Office

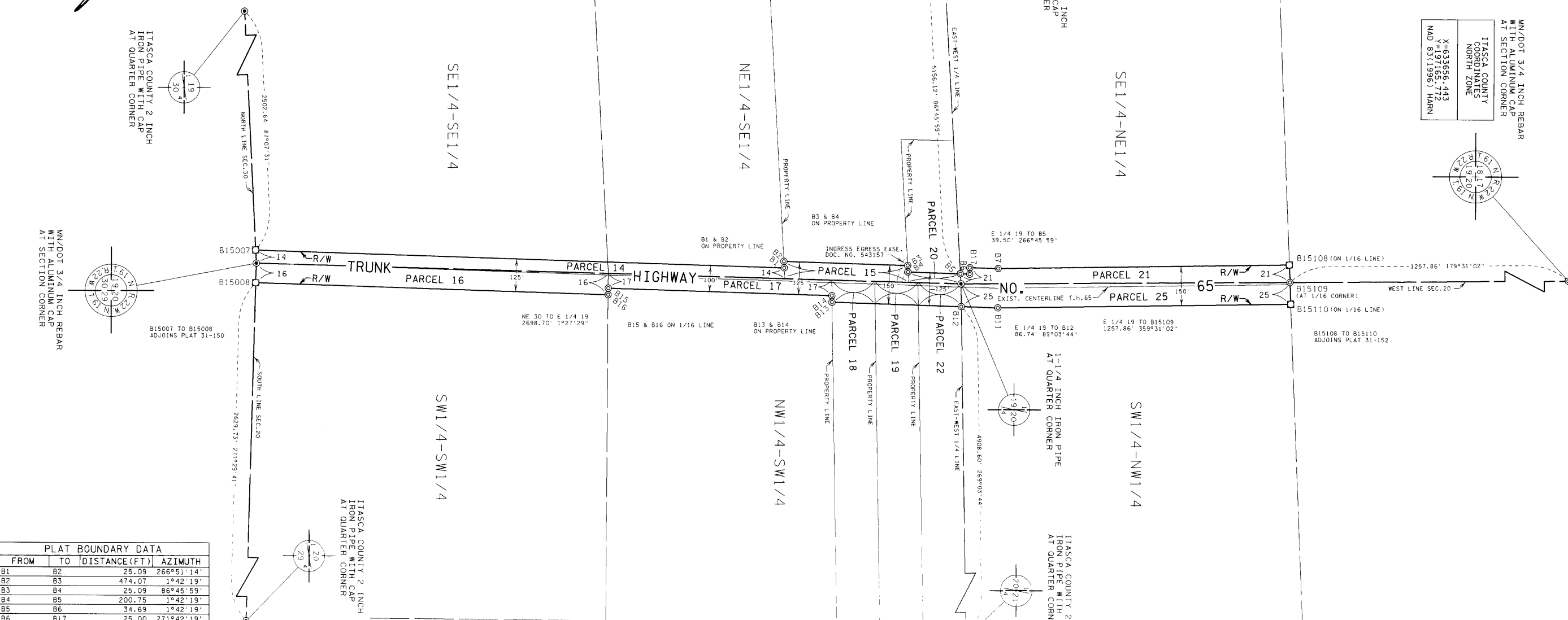


- SURVEY STANDARDS
- The plat values, azimuths, and distances are based on the County coordinate system.
 - The boundary monuments shown on this plat have been field checked for location. The standard deviation for the monument position is 0.10 foot.
 - The county coordinates shown on one monument are based on ties to national control monuments.
 - For details of this survey contact the Surveying Section at the Minnesota Department of Transportation: DULUTH Name of District

AZIMUTH ORIENTATION AND GRID CONVERSION
 Plat azimuths are oriented to the County Coordinate System with 0 degrees 0 minutes 0 seconds being "GRID NORTH". Plat distances are ground lengths.

MINNESOTA DEPARTMENT OF TRANSPORTATION RIGHT OF WAY PLAT NO. 31-151

CONTROL SECTION NO. 3112 (65=159) 903
 IN THE SOUTHEAST QUARTER OF THE NORTHEAST QUARTER OF SECTION 19, T.61 N., R.22 W.,
 IN THE EAST HALF OF THE SOUTHEAST QUARTER OF SECTION 19, T.61 N., R.22 W.,
 IN THE SOUTHWEST QUARTER OF THE NORTHWEST QUARTER OF SECTION 20, T.61 N., R.22 W.,
 IN THE WEST HALF OF THE SOUTHWEST QUARTER OF SECTION 20, T.61 N., R.22 W.,
 ITASCA COUNTY, MINNESOTA



MN/DOT 3/4 INCH REBAR WITH ALUMINUM CAP AT SECTION CORNER
 ITASCA COUNTY COORDINATES NORTH ZONE
 NAD 83 (1996) HARN
 Y=633656.443
 X=192726.773
 NAD 83 (1996) HARN

FROM	TO	DISTANCE (FT)	AZIMUTH
B1	B2	25.09	266°51'14"
B2	B3	474.07	1°42'19"
B3	B4	25.09	86°45'59"
B4	B5	200.75	1°42'19"
B5	B6	34.69	1°42'19"
B6	B7	25.00	271°42'19"
B7	B17	108.04	1°42'19"
B7	B15108	1114.12	359°04'11"
B15108	B15109	66.71	87°46'11"
B15109	B15110	83.32	87°47'54"
B15110	B11	1120.93	179°04'11"
B11	B12	138.87	181°42'19"
B12	B13	495.53	181°42'19"
B13	B14	25.03	269°03'44"
B14	B15	855.29	181°42'19"
B15	B16	25.01	90°18'07"
B16	B15008	1351.04	181°42'19"
B15008	NE 30	75.00	271°29'41"
NE 30	B15007	50.16	267°07'31"
B15007	B1	2024.51	1°42'19"

PARCEL	OWNER	LOCATION	NEW T.H. R/W ACRES MORE OR LESS	PERMANENT R/W INTEREST
14	ORLYN J. OLSON	NE1/4 SE1/4	2.12	FEE
15	BRANDON MCCOMAS	NE1/4 SE1/4	0.71	FEE
20	HERBERT L. MOORE	NE1/4 SE1/4	0.18	FEE
21	MARSHALL H. PETERSEN	SE1/4 NE1/4	1.78	FEE

PARCEL	OWNER	LOCATION	NEW T.H. R/W ACRES MORE OR LESS	PERMANENT R/W INTEREST
16	GWEN OLSON BRANDT	SW1/4 SW1/4	2.44	FEE
17	DARROLD E. PERSSON	NW1/4 SW1/4	1.13	FEE
18	CAROL CHICKERING	NW1/4 SW1/4	0.32	FEE
19	JOAN DIMOND	NW1/4 SW1/4	0.32	FEE
22	GREG DIMOND	NW1/4 SW1/4	0.33	FEE
25	ROBERT H. CLAFLIN	SW1/4 NW1/4	2.54	FEE



PLAT NO. 31-151
 C.S. 3112 (65=159) 903

DOC. NO. _____
 OFFICE OF COUNTY RECORDER
 ITASCA COUNTY, MN
 I HEREBY CERTIFY THAT THIS PLAT
 HAS BEEN FILED IN THIS OFFICE
 ON _____, 20____, AT _____ M
 IN CAB. _____ NO. _____
 COUNTY RECORDER