

THE COMMISSIONER OF TRANSPORTATION IS HEREBY DESIGNATING THE DEFINITE LOCATION OF TRUNK HIGHWAY NO. 65 FROM BUCK LAKE TO TOGO

as shown on this plat prepared by the State of Minnesota Department of Transportation is hereby certified as the official plat of that portion of said Trunk Highway No. 65 within the designated portion of Sections 19 & 24 and the Commissioner's Order therefor pursuant to Minnesota Statutes, Section 160.085, Section 160.14 subd. 1, Section 161.16 subd. 2, and Section 161.18.

It is further ordered that it is necessary to acquire all trees, shrubs, grass and herbage within the right of way of said Trunk Highway, and to keep and have the exclusive control of the same.

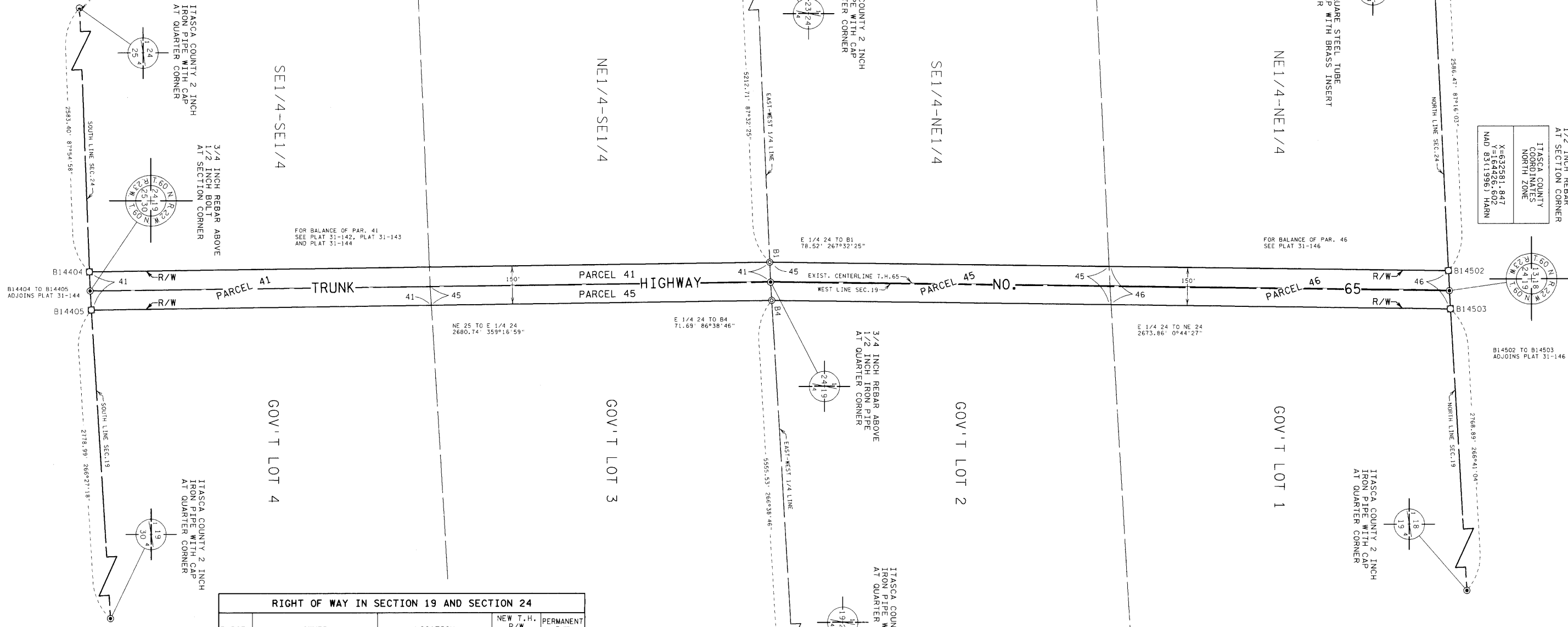
Commissioner's Order No. 90876 Location PLAT 31-145 Nature of Interest
 Definite location, width, access, temporary easement and building removal easement.

Certified:

Thomas K. Sorrell, Commissioner of Transportation
M. J. Strobel 7/22/09
 by *M. J. Strobel* Date
 Assistant Director, Office of Land Management

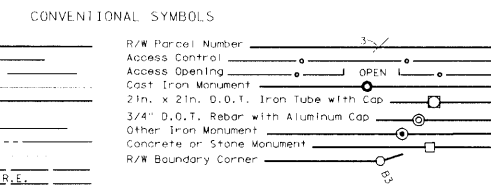
I hereby certify that this plat was surveyed and prepared by me or under my direct supervision and that I am a duly Licensed Land Surveyor under the laws of the State of Minnesota; that all measurements are correctly shown on this plat; that all monuments have been correctly placed as shown on this plat; that certificates of location for the monumented Public Land Survey corners as shown on this plat are on file in the County Recorder's Office (if required under Minnesota Statutes, Section 160.15) and/or the County Surveyor's Office; that this plat meets the requirements of Minnesota Statutes, Section 160.085, Section 160.14 subd. 1, Section 161.16 subd. 2, and Section 161.18; that the parcel ownerships are correctly described and delineated on the plat; and that the proposed right of way boundary lines are correctly designated on the plat.

Certified by *Robert J. Johnson* 41204 7/22/09
 License No. Date
 Mn/DOT District Office



RIGHT OF WAY IN SECTION 19 AND SECTION 24				
PARCEL	OWNER	LOCATION	NEW T.H. R/W ACRES MORE OR LESS	PERMANENT R/W INTEREST
41	STATE OF MINNESOTA	GOV'T LOT 4 SECTION 19 NE1/4 SE1/4 SECTION 24	7.00	FEE
45	STATE OF MINNESOTA	GOV'T LOT 2 SECTION 19 GOV'T LOT 3 SECTION 19 SE1/4 NE1/4 SECTION 24	6.83	FEE
46	STATE OF MINNESOTA	GOV'T LOT 1 SECTION 19 NE1/4 NE1/4 SECTION 24	4.60	FEE

PLAT BOUNDARY DATA			
FROM	TO	DISTANCE (FT)	AZIMUTH
B1	B14502	2673.46	0°43'55"
B14502	NE 24	79.00	87°16'03"
NE 24	B14503	71.30	86°41'04"
B14503	B4	2673.79	180°43'55"
B4	B14405	2680.33	179°12'34"
B14405	NE 25	75.09	266°27'18"
NE 25	B14404	75.02	267°54'58"
B14404	B1	2680.14	359°12'34"



DISTANCES SHOWN TO FEET 166, 80 ETC. ARE EXACT VALUES.

SURVEY STANDARDS

- The plat values, azimuths, and distances are based on the County coordinate system.
- The boundary monuments shown on this plat have been field checked for location. The standard deviation for the monument position is 0.10 foot.
- The county coordinates shown on one monument are based on ties to national control monuments.
- For details of this survey contact the Surveying Section at the Minnesota Department of Transportation: DULUTH Name of District

AZIMUTH ORIENTATION AND GRID CONVERSION
 Plat azimuths are referred to the County Coordinate System with 0 degrees 0 minutes 0 seconds being "GRID NORTH". Plat distances are ground lengths.

MINNESOTA DEPARTMENT OF TRANSPORTATION RIGHT OF WAY PLAT NO. 31-145

CONTROL SECTION NO. 3112 (65=159) 902
 IN GOVERNMENT LOTS 1,2,3 AND 4 OF SECTION 19, T.60 N., R.22 W.,
 IN THE NORTHEAST QUARTER OF THE NORTHEAST QUARTER OF SECTION 24, T.60 N., R.23 W.,
 IN THE SOUTHEAST QUARTER OF THE NORTHEAST QUARTER OF SECTION 24, T.60 N., R.23 W.,
 IN THE NORTHEAST QUARTER OF THE SOUTHEAST QUARTER OF SECTION 24, T.60 N., R.23 W.,
 IN THE SOUTHEAST QUARTER OF THE SOUTHEAST QUARTER OF SECTION 24, T.60 N., R.23 W.,
 ITASCA COUNTY, MINNESOTA



PLAT NO. 31-145
 C.S. 3112 (65=159) 902

DOC. NO. _____
 OFFICE OF COUNTY RECORDER
 ITASCA COUNTY, MN
 I HEREBY CERTIFY THAT THIS PLAT
 HAS BEEN FILED IN THIS OFFICE
 ON _____, 20____, AT _____ M
 IN CAB. _____ NO. _____
 COUNTY RECORDER