

THE COMMISSIONER OF TRANSPORTATION IS HEREBY DESIGNATING THE DEFINITE LOCATION OF TRUNK HIGHWAY NO. 65 FROM BUCK LAKE TO TOGO

as shown on this plat prepared by the State of Minnesota Department of Transportation is hereby certified as the official plat of that portion of said Trunk Highway No. 65 within the designated portion of Sections 13 & 18 and the Commissioner's Order therefor, pursuant to Minnesota Statutes, Section 160.085, Section 160.14 subd. 1, Section 161.16 subd. 2, and Section 161.18.

It is further ordered that it is necessary to acquire all trees, shrubs, grass and herbage within the right of way of said Trunk Highway, and to keep and have the exclusive control of the same.

Commissioner's Order No. 90877 Location PLAT 31-146 Nature of Interest Definite location, width, access, temporary easement and building removal easement.

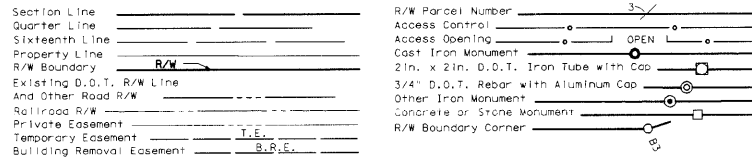
Certified:

Thomas K. Stensberg  
*Thomas K. Stensberg* 7/22/09  
 Assistant Director, Office of Land Management

I hereby certify that this plat was surveyed and prepared by me or under my direct supervision and that I am a duly Licensed Land Surveyor under the Laws of the State of Minnesota; that all measurements are correctly shown on this plat; that all monuments have been correctly placed as shown on this plat; that certificates of location for the monumented Public Land Survey corners as shown on this plat are on file in the County Recorder's Office (if required under Minnesota Statutes, Section 160.15) and/or the County Surveyor's Office; that this plat meets the requirements of Minnesota Statutes, Section 160.085, Section 160.14 subd. 1, Section 161.16 subd. 2, and Section 161.18; that the parcel ownerships are correctly described and delineated on the plat; and that the proposed right of way boundary lines are correctly designated on the plat.

Certified by *Rodney V. Anderson* 41204 7/27/09  
 License No. Date  
 Mn/DOT District Office

CONVENTIONAL SYMBOLS



DISTANCES SHOWN TO FEET (66, 80 ETC.) ARE EXACT VALUES.

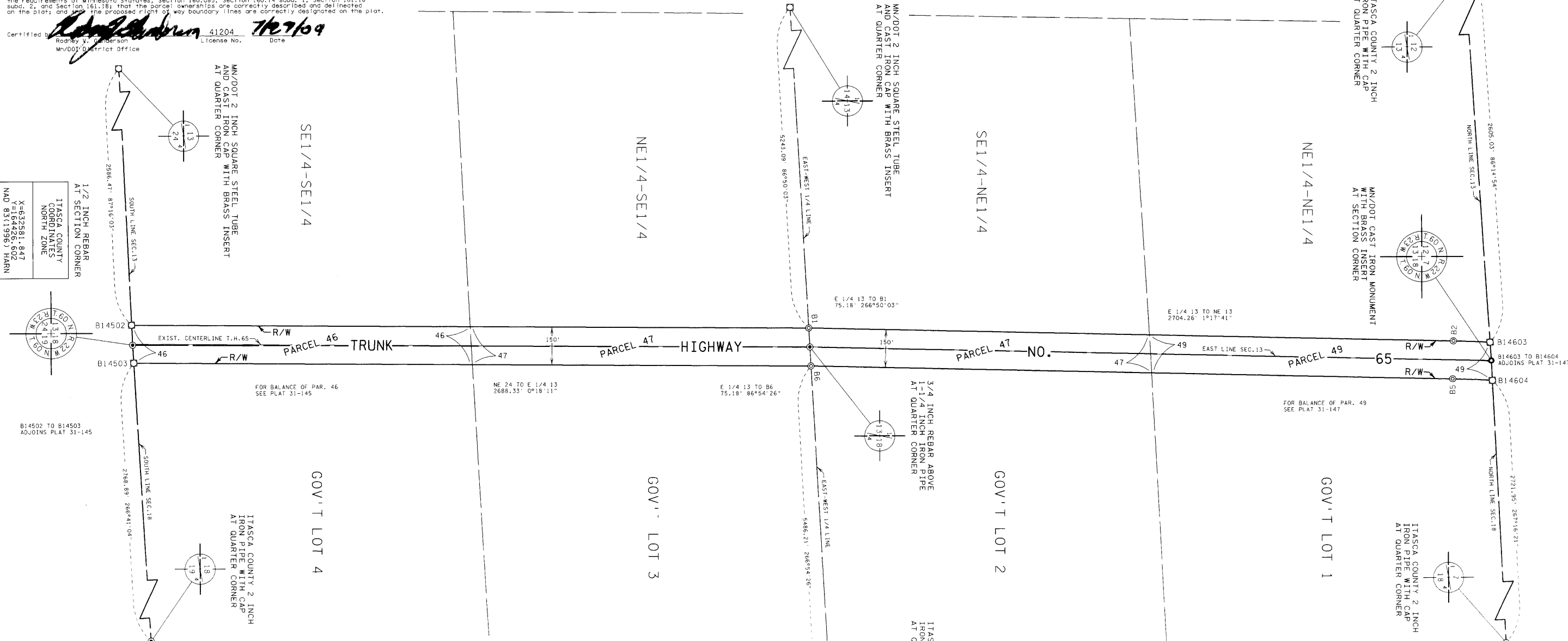
SURVEY STANDARDS

- The plat values, azimuths, and distances are based on the County coordinate system.
- The boundary monuments shown on this plat have been field checked for location. The standard deviation for the monument position is 0.10 foot.
- The county coordinates shown on one monument are based on ties to national control monuments.
- For details of this survey contact the Surveying Section at the Minnesota Department of Transportation: DULUTH, Name of District

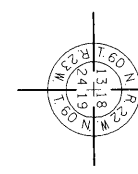
AZIMUTH ORIENTATION AND GRID CONVERSION  
 Plat azimuths are oriented to the County Coordinate System with 0 degrees 0 minutes 0 seconds being "GRID NORTH". Plat distances are ground lengths.

MINNESOTA DEPARTMENT OF TRANSPORTATION  
 RIGHT OF WAY PLAT NO. 31-146

CONTROL SECTION NO. 3112 (65=159) 902  
 IN THE NORTHEAST QUARTER OF THE NORTHEAST QUARTER OF SECTION 13, T.60 N., R.23 W.,  
 IN THE SOUTHEAST QUARTER OF THE NORTHEAST QUARTER OF SECTION 13, T.60 N., R.23 W.,  
 IN THE NORTHEAST QUARTER OF THE SOUTHEAST QUARTER OF SECTION 13, T.60 N., R.23 W.,  
 IN THE SOUTHEAST QUARTER OF THE SOUTHEAST QUARTER OF SECTION 13, T.60 N., R.23 W.,  
 IN GOVERNMENT LOTS 1,2,3 AND 4 OF SECTION 18, T.60 N., R.22 W.,  
 ITASCA COUNTY, MINNESOTA



1/2 INCH REBAR  
 AT SECTION CORNER  
 ITASCA COUNTY  
 NORTH ZONE  
 X=632981.847  
 Y=62291.802  
 NAD 83(1996) HARN



B14502 TO B14503  
 ADJOINS PLAT 31-145

PLAT BOUNDARY DATA			
FROM	TO	DISTANCE (FT)	AZIMUTH
B1	B2	2557.74	1°17'41"
B2	B14603	C 146.01	2°21'29"
A 146.02	R 3933.84	DEL	2°07'36" RT
B14603	NE 13	72.57	86°14'54"
NE 13	B14604	78.49	87°16'21"
B14604	B5	C 157.91	182°29'25"
A 157.92	R 3783.84	DEL	2°23'29" LT
B5	B6	2546.14	181°17'41"
B6	B14503	2688.29	180°23'08"
B14503	NE 24	71.30	266°41'04"
NE 24	B14502	79.00	267°16'03"
B14502	B1	2687.97	0°23'08"

RIGHT OF WAY IN SECTION 13 AND SECTION 18				
PARCEL	OWNER	LOCATION	NEW T.H. R/W ACRES MORE OR LESS	PERMANENT R/W INTEREST
46	STATE OF MINNESOTA	SE1/4 SE1/4 SECTION 13 GOV'T LOT 4 SECTION 18	4.63	FEE
47	STATE OF MINNESOTA	SE1/4 NE1/4 SECTION 13 NE1/4 SE1/4 SECTION 13 GOV'T LOT 2 SECTION 18 GOV'T LOT 3 SECTION 18	9.28	FEE
49	STATE OF MINNESOTA	NE1/4 NE1/4 SECTION 13 GOV'T LOT 1 SECTION 18	4.65	FEE



PLAT NO. 31-146  
 C.S. 3112 (65=159) 902

DOC. NO.  
 OFFICE OF COUNTY RECORDER  
 ITASCA COUNTY, MN  
 I HEREBY CERTIFY THAT THIS PLAT  
 HAS BEEN FILED IN THIS OFFICE  
 ON \_\_\_\_\_, 20\_\_\_\_, AT \_\_\_\_\_ M  
 IN CAB. \_\_\_\_\_ NO. \_\_\_\_\_  
 COUNTY RECORDER