

THE COMMISSIONER OF TRANSPORTATION IS HEREBY DESIGNATING THE DEFINITE LOCATION OF TRUNK HIGHWAY NO. 65 FROM BUCK LAKE TO TGD

As shown on this plat prepared by the State of Minnesota Department of Transportation is hereby certified as the official plat of that portion of said Trunk Highway No. 65 within the designated portion of Sections 1, 5, 6 and the Commissioner's Order therefor, pursuant to Minnesota Statutes, Section 160.085, Section 160.14 subd. 1, Section 161.16 subd. 2, and Section 161.18.

It is further ordered that it is necessary to acquire all trees, shrubs, grass and forage within the right-of-way of said Trunk Highway, and to keep and have the exclusive control of the same.

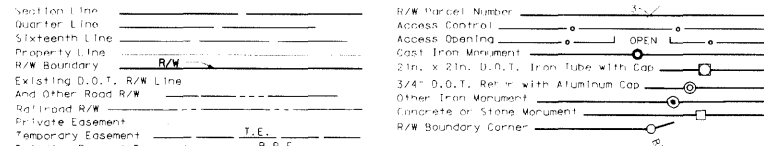
Commissioner's Order No. 90879 Location PLAT 31-148 Nature of Interest: Definite location, width, access, temporary easement and building removal easement.

Certified by Thomas K. Sorel, Commissioner of Transportation, dated 7/27/69, by J. Steenberg, Assistant Director, Office of Land Management.

I hereby certify that this plat was surveyed and prepared by me or under my direct supervision and that I am a duly Licensed Land Surveyor under the Laws of the State of Minnesota; that all measurements are correctly shown on this plat; that all monuments have been correctly placed as shown on this plat; that Certificates of Location for the monumented Public Land Survey corners as shown on this plat are on file in the County Recorder's Office...

Certified by Rodney V. Anderson, MNDOT District Office, License No. 41204, dated 7/28/69.

CONVENTIONAL SYMBOLS

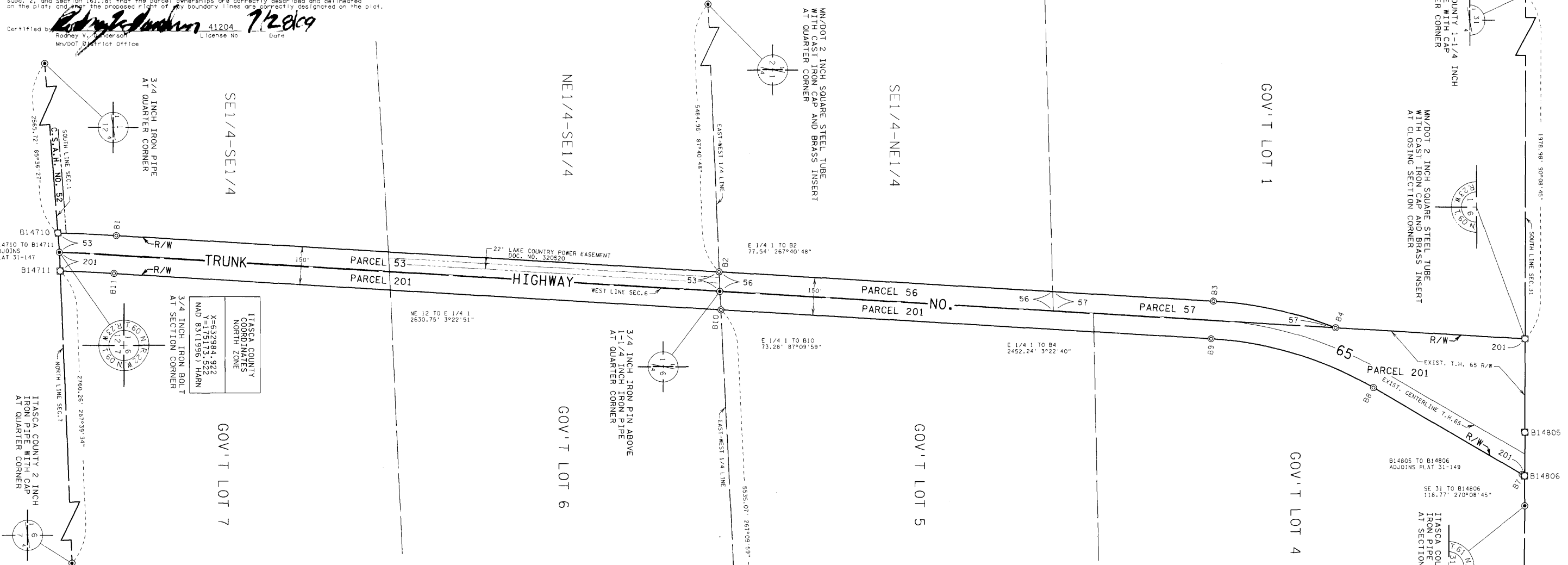


DISTANCES SHOWN TO FEET (66, 80 ETC.) ARE EXACT VALUES.

SURVEY STANDARDS

- 1. The plat values, azimuths, and distances are based on the County coordinate system.
2. The boundary monuments shown on this plat have been field checked for location. The standard deviation for the monument position is 0.10 foot.
3. The county coordinates shown on one monument are based on ties to national control monuments.
4. For details of this survey contact the Surveying Section at the Minnesota Department of Transportation: DULUTH, Name of District

AZIMUTH ORIENTATION AND GRID CONVERSION: Plat azimuths are oriented to the County Coordinate System with 0 degrees 0 minutes 0 seconds being "GRID NORTH". Plat distances are ground lengths.



PLAT BOUNDARY DATA table with columns: FROM, TO, DISTANCE (FT), AZIMUTH. Lists boundary points B1 through B14710 and distances.

RIGHT OF WAY IN SECTION 1 table with columns: PARCEL, OWNER, LOCATION, NEW T.H. R/W ACRES MORE OR LESS, PERMANENT R/W INTEREST. Includes parcels 53, 56, and 57.

RIGHT OF WAY IN SECTION 6 table with columns: PARCEL, OWNER, LOCATION, NEW T.H. R/W ACRES MORE OR LESS, PERMANENT R/W INTEREST. Includes parcel 201.



PLAT NO. 31-148, C.S. 3112 (65=159) 902

MINNESOTA DEPARTMENT OF TRANSPORTATION RIGHT OF WAY PLAT NO. 31-148

CONTROL SECTION NO. 3112 (65=159) 902 IN GOVERNMENT LOT 1 OF SECTION 1, T.60 N., R.23 W., IN THE SOUTHEAST QUARTER OF THE NORTHEAST QUARTER OF SECTION 1, T.60 N., R.23 W., IN THE NORTHEAST QUARTER OF THE SOUTHEAST QUARTER OF SECTION 1, T.60 N., R.23 W., IN THE SOUTHEAST QUARTER OF THE SOUTHEAST QUARTER OF SECTION 1, T.60 N., R.23 W., IN GOVERNMENT LOTS 4,5,6 AND 7 OF SECTION 6, T.60 N., R.22 W., ITASCA COUNTY, MINNESOTA

OFFICE OF COUNTY RECORDER, ITASCA COUNTY, MN. I HEREBY CERTIFY THAT THIS PLAT HAS BEEN FILED IN THIS OFFICE ON [] 20 [] AT [] M IN CAB. [] NO. [] COUNTY RECORDER