

THE COMMISSIONER OF TRANSPORTATION IS HEREBY DESIGNATING THE DEFINITE LOCATION OF TRUNK HIGHWAY NO. 65 FROM BUCK LAKE TO TOGO

as shown on this plat prepared by the State of Minnesota Department of Transportation is hereby certified as the official plat of that portion of said Trunk Highway No. 65 within the designated portion of Sections 19 & 24 and the Commissioner's Order therefor, pursuant to Minnesota Statutes, Section 160.085, Section 160.14 subd. 1, Section 161.16 subd. 2, and Section 161.18

It is further ordered that it is necessary to acquire all trees, shrubs, grass and herbage within the right of way of said Trunk Highway, and to keep and have the exclusive control of the same.

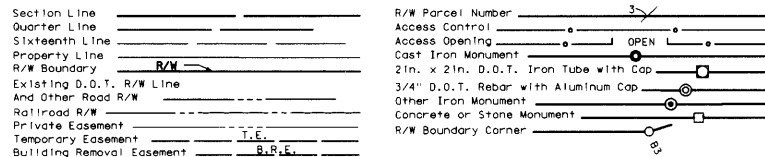
Commissioner's Order No.	Location	Nature of Interest
90867	PLAT 31-139	Definite location, width, access, temporary easement and building removal easement.

Certified:
 Thomas K. Song
 Commissioner of Transportation
 by *M. J. Shinsky* 7/16/09
 Assistant Director, Office of Land Management

I hereby certify that this plat was surveyed and prepared by me or under my direct supervision and that I am a duly Licensed Land Surveyor under the Laws of the State of Minnesota; that all measurements are correctly shown on this plat; that all monuments have been correctly placed as shown on this plat; that Certificates of Location for the monumented Public Land Survey corners as shown on this plat are on file in the County Recorder's Office (if required under Minnesota Statutes, Section 160.15) and/or the County Surveyor's Office; that this plat meets the requirements of Minnesota Statutes, Section 160.085, Section 160.14 subd. 1, Section 161.16 subd. 2, and Section 161.18; that the parcel ownerships are correctly described and delineated on the plat; and that the proposed project boundary lines are correctly designated on the plat.

Certified by *Rodney V. Gustafson* 41204 7/29/09
 Rodney V. Gustafson License No. Date
 Mn/DOT District Office

CONVENTIONAL SYMBOLS



DISTANCES SHOWN TO FEET (66, 80 ETC.) ARE EXACT VALUES.

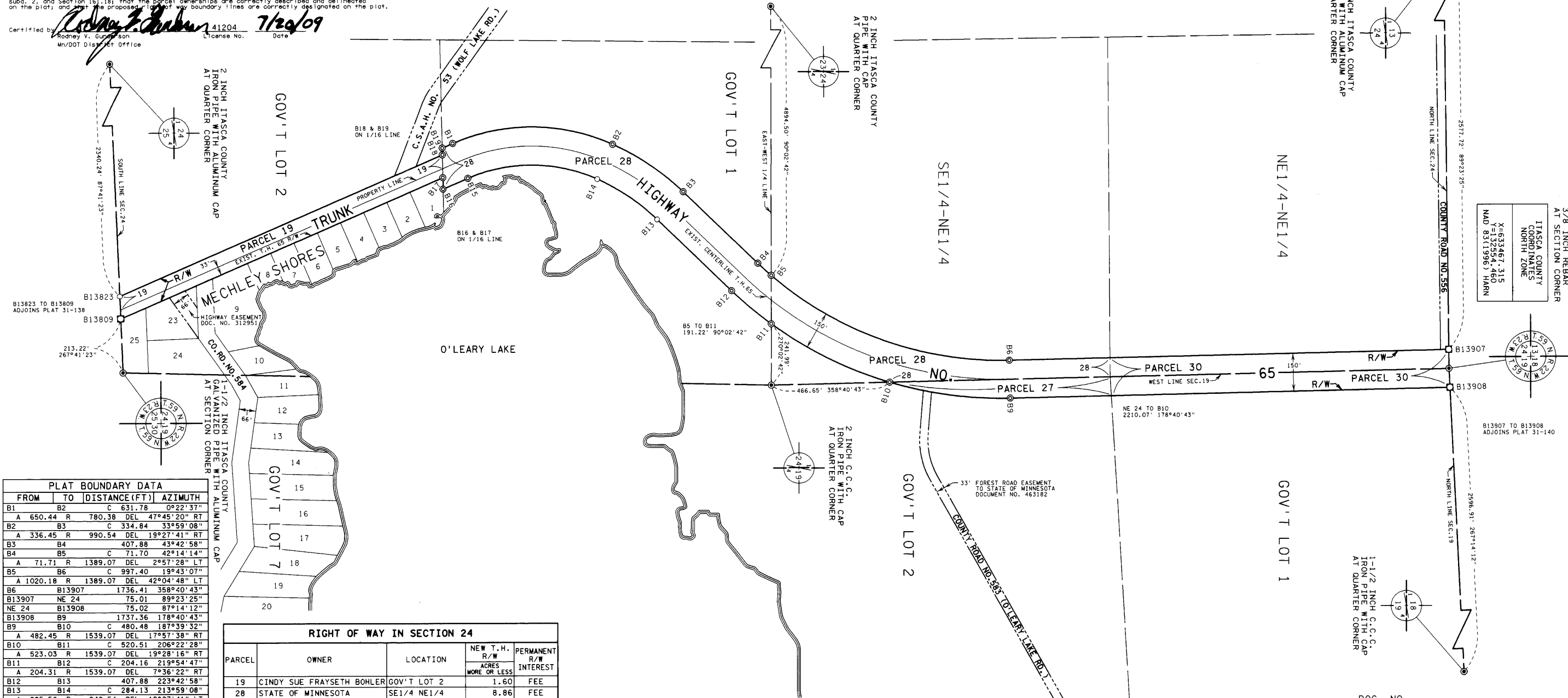
SURVEY STANDARDS

- The plat values, azimuths, and distances are based on the County coordinate system.
- The boundary monuments shown on this plat have been field checked for location. The standard deviation for the monument position is 0.10 foot.
- The county coordinates shown on one monument are based on ties to national control monuments.
- For details of this survey contact the Surveying Section at the Minnesota Department of Transportation: DULUTH None of District

AZIMUTH ORIENTATION AND GRID CONVERSION
 Plat azimuths are oriented to the County Coordinate System with 0 degrees 0 minutes 0 seconds being "GRID NORTH". Plat distances are ground lengths.

MINNESOTA DEPARTMENT OF TRANSPORTATION
 RIGHT OF WAY PLAT NO. 31-139

CONTROL SECTION NO. 3112 (65=159) 902
 IN THE NORTHEAST QUARTER OF THE NORTHEAST QUARTER OF SECTION 24, T.59 N., R.23 W.,
 IN THE SOUTHEAST QUARTER OF THE NORTHEAST QUARTER OF SECTION 24, T.59 N., R.23 W.,
 IN GOVERNMENT LOTS 1 AND 2 OF SECTION 24, T.59 N., R.23 W.,
 IN GOVERNMENT LOTS 1 AND 2 OF SECTION 19, T.59 N., R.22 W.,
 ITASCA COUNTY, MINNESOTA



FROM	TO	DISTANCE (FT)	AZIMUTH
B1	B2	631.78	09°22'37"
A	650.44	R	780.38 DEL 47°45'20" RT
B2	B3	334.84	33°59'08"
A	336.45	R	990.54 DEL 19°27'41" RT
B3	B4	407.88	43°42'58"
B4	B5	71.70	42°14'14"
A	71.71	R	1389.07 DEL 2°57'28" LT
B5	B6	997.40	19°43'07"
A	1020.18	R	1389.07 DEL 42°04'48" LT
B6	B13907	1736.41	358°40'43"
B13907	NE 24	75.01	89°23'25"
NE 24	B13908	75.02	87°14'12"
B13908	B9	1737.36	178°40'43"
B9	B10	480.48	187°39'32"
A	482.45	R	1539.07 DEL 17°57'38" RT
B10	B11	520.51	206°22'28"
A	523.03	R	1539.07 DEL 19°28'16" RT
B11	B12	204.16	219°54'47"
A	204.31	R	1539.07 DEL 7°36'22" RT
B12	B13	407.88	223°42'58"
B13	B14	284.13	213°59'08"
A	285.50	R	840.54 DEL 19°27'41" LT
B14	B15	510.34	180°22'37"
A	525.42	R	630.38 DEL 47°45'20" LT
B15	B16	107.11	156°29'57"
B16	B17	45.42	268°52'51"
B17	B13809	1389.06	156°29'57"
B13809	B13823	89.02	267°41'23"
B13823	B18	1391.06	336°29'57"
B18	B19	27.04	268°52'51"
B19	B1	45.34	336°29'57"

PARCEL	OWNER	LOCATION	NEW T.H. R/W ACRES MORE OR LESS	PERMANENT R/W INTEREST
19	CINDY SUE FRAYSETH BOHLER	GOV'T LOT 2	1.60	FEE
28	STATE OF MINNESOTA	SE1/4 NE1/4	8.86	FEE

PARCEL	OWNER	LOCATION	NEW T.H. R/W ACRES MORE OR LESS	PERMANENT R/W INTEREST
27	DAVID J. LEONARD	GOV'T LOT 2	1.23	FEE

PARCEL	OWNER	LOCATION	NEW T.H. R/W ACRES MORE OR LESS	PERMANENT R/W INTEREST
30	STATE OF MINNESOTA	GOV'T LOT 1 SECTION 19 NE1/4 NE1/4 SECTION 24	4.61	FEE



PLAT NO. 31-139
 C.S. 3112 (65=159) 902

ITASCA COUNTY
 COORDINATES
 NORTH ZONE
 X=633467.315
 Y=132554.460
 NAD 83(1996) HARN

DOC. NO. _____
 OFFICE OF COUNTY RECORDER
 ITASCA COUNTY, MN
 I HEREBY CERTIFY THAT THIS PLAT
 HAS BEEN FILED IN THIS OFFICE
 ON _____, 20____, AT _____ M
 IN CAB. _____ NO. _____
 COUNTY RECORDER