

MINNESOTA DEPARTMENT OF TRANSPORTATION MONUMENTATION PLAT NO. 31-M1

STATE PROJECT NO. 3109(46=165)903 AND 3109(46=165-22)
IN THE WEST HALF OF SECTION 20, T.148 N., R.27 W.

ITASCA COUNTY, MINNESOTA

THE COMMISSIONER OF TRANSPORTATION IS HEREBY DESIGNATING THE DEFINITE
LOCATION OF TRUNK HIGHWAY NO. 46 FROM 1.0 MILE SOUTH TO
0.75 MILE NORTH OF THE POPPLE RIVER

This is hereby certified as the official plat and Commissioner's Order
thereof for said T.H. 46 within the designated portion of said
Section 20 pursuant to Minnesota Statutes 168.14 and 168.16

Commissioner's Order No.	Location
66604	Plats 31-M1 and 31-M2
Recommended for Certification:	Certified:

<i>Richard P. Wilson</i> Richard P. Wilson Commissioner of Transportation	<i>J.L. Marshall</i> J.L. Marshall Assistant Commissioner of Transportation
Date: 5-10-82	Date: 5-10-82
R.J. DeWan Director of R/W Operations	F.C. Marshall Assistant Commissioner of Transportation

I hereby certify that this plat was prepared by me or under my direct supervision and that I am a duly
Registered Land Surveyor under the Laws of the State of Minnesota; that this plat meets requirements
of Minnesota Statutes sections 168.16, 168.22 and section 168.14.

Certified by *John C. Jensen* 10460 5-7-82
Registered Land Surveyor Reg. No. Date
Office of Surveying & Mapping

I hereby certify that this plat was surveyed by me or under my direct supervision and that I am a duly
Registered Land Surveyor under the Laws of the State of Minnesota; that all measurements are correctly
shown on this plat and that all monuments have been correctly placed as shown on this plat.

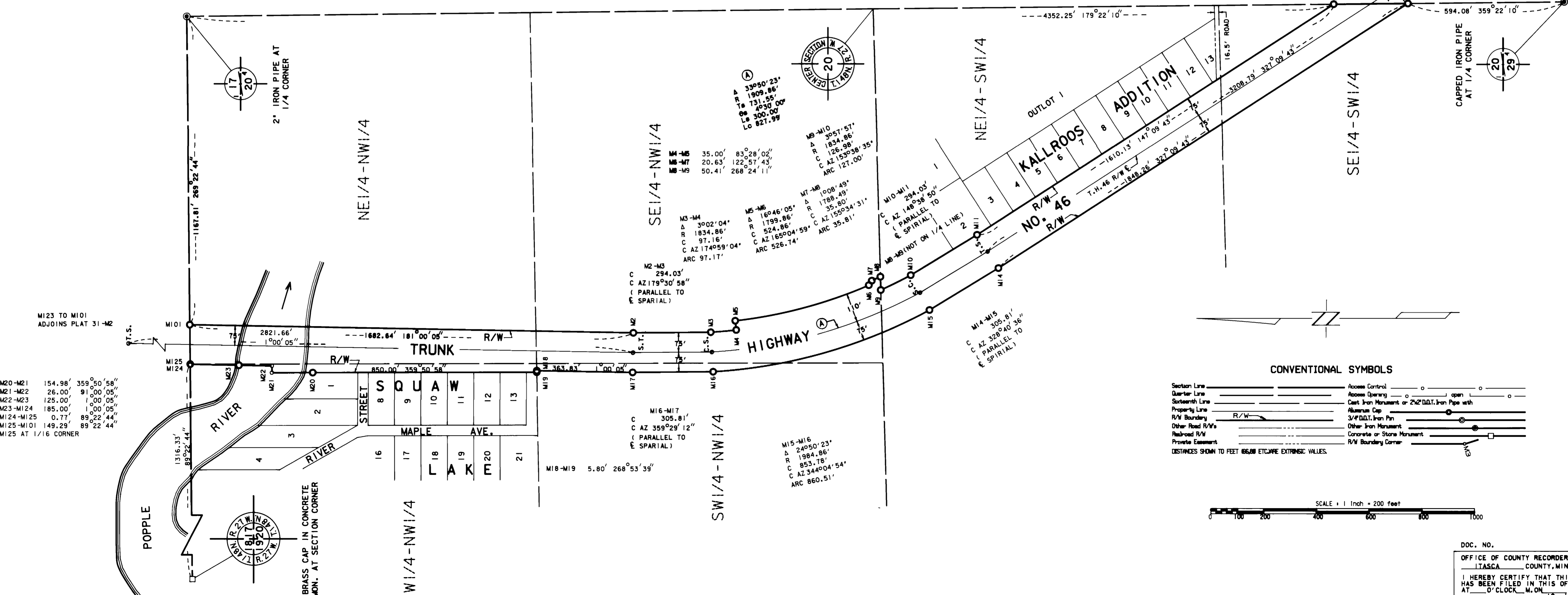
Certified by *Walter B. Wubbe* 11866 5/11/82
Registered Land Surveyor Reg. No. Date
MVDOT District Office

SURVEY STANDARDS

- The plat values, azimuths and distances, are based on the project control survey system.
- The boundary monuments shown on this plat have been field checked for location. The standard deviation for the monument position is 0.1 ft.
- Certificates of Location have been filed at the County Recorder's Office and/or the County Surveyor's Office for the section corner monuments shown on this plat.
- For details of this survey contact the Surveying and Mapping Section at the Minnesota Department of Transportation, BEMIDJII, Name of District

AZIMUTH ORIENTATION

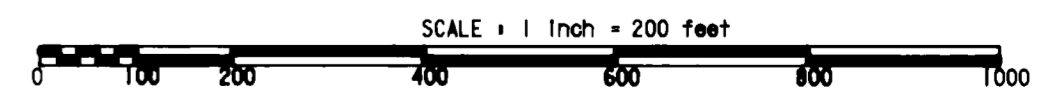
Plat azimuths are oriented to an assumed
coordinate system with the North Line of Section 20
being 89° 22' 44"



CONVENTIONAL SYMBOLS

Section Line	Access Control
Quarter Line	Access Opening
Sixteenth Line	Cast Iron Monument or 2 1/2\" D.O.T. Iron Pipe with
Property Line	Aluminum Cap
R/W Boundary	3/4\" D.O.T. Iron Pin
Other Road R/W's	Other Iron Monument
Railroad R/W	Concrete or Stone Monument
Private Easement	R/W Boundary Corner

DISTANCES SHOWN TO FEET 66.66 ETC. MAKE EXTRINSIC VALUES.



DOC. NO.
OFFICE OF COUNTY RECORDER
ITASCA COUNTY, MINN.
I HEREBY CERTIFY THAT THIS PLAT
HAS BEEN FILED IN THIS OFFICE
AT _____ O'CLOCK _____ M. ON _____ IN
BOOK _____ OF _____ PAGE _____