

**CONVENTIONAL SYMBOLS**

Section Line	Building Removal Easement	B. R. E.
Quarter Line	R/W Parcel Number	3
Sixteenth Line	Access Control	o
Property Line	Access Opening	o
R/W Boundary	Cast Iron Monument or Square 50mm Iron Tube with Aluminum Cap	⊙
Existing D.O.T. R/W Line	20mm D.O.T. Iron Pin	⊙
And Other Road R/W's	Other Iron Monument	⊙
Railroad R/W	Concrete or Stone Monument	⊙
Private Easement	R/W Boundary Corner	⊙
Temporary Easement		

DISTANCES SHOWN TO WHOLE NUMBERS ( 10, 80 ETC. ) ARE EXACT VALUES.

**PLAT BOUNDARY DATA**

POINT	DISTANCE		AZIMUTH
	FEET	METERS	
B3509-B1	2256.24'	687.704	180°52'26"
B1-B2	190.04'	57.924	178°53'43"
B2-B3	17.21'	5.246	270°52'12"
B3-B3424	C 256.60'	78.212	165°35'40"
	ARC 259.50'	79.097	
	Δ		29°44'17"
RADIUS	499.98'	152.395	
B3424-B3423	97.52'	29.723	268°34'02"
B3423-B4	119.87'	36.537	321°44'16"
B4-B5	57.82'	17.623	341°34'04"
B5-B6	38.86'	11.845	2°24'46"
B6-B7	93.72'	28.567	14°51'27"
B7-B3508	2417.48'	736.849	0°52'26"
B3508-B3509	111.58'	34.011	89°25'58"

**MINNESOTA DEPARTMENT OF TRANSPORTATION  
RIGHT OF WAY PLAT NO. 31-35**

STATE PROJECT NO. 3108(38-196)901  
IN THE NORTHWEST QUARTER OF SECTION 29, T. 60 N., R. 26 W.,  
ITASCA COUNTY, MINNESOTA

THE COMMISSIONER OF TRANSPORTATION IS HEREBY DESIGNATING THE DEFINITE LOCATION OF TRUNK HIGHWAY NO. 38 FROM JAYNES TO BIGFORK

as shown on this plat prepared by the State of Minnesota Department of Transportation is hereby certified as the official plat of that portion of said T.H. 38 within the designated portion of Section 29 and the Commissioner's Order therefor pursuant to Minnesota Statutes, section 160.085, section 160.14 subd. 1, section 161.16 subd. 2, and section 161.18.

Commissioner's Order No.	Location	Nature of Interest
82068	PLATS 31-34 THRU 31-41	Definite location, width, access, temporary easement and building removal easement.

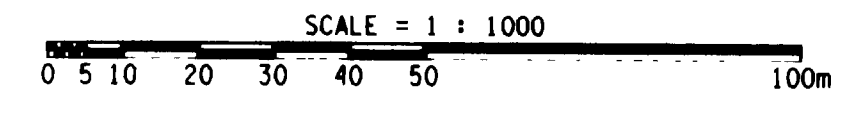
Certified by:  
James N. Denn  
Commissioner of Transportation  
*[Signature]*  
Date: 10-22-96  
by K.F. Rasmussen  
Director, Office of Right of Way and Surveys

I hereby certify that this plat was prepared by me or under my direct supervision and that I am a duly Registered Land Surveyor under the Laws of the State of Minnesota; that this plat meets requirements of Minnesota Statutes, section 160.085, section 160.14 subd. 1, section 161.16 subd. 2, and section 161.18; that parcel ownerships are correctly described and delineated on the plat; and that the proposed right-of-way boundary lines are correctly designated on the plat.

Certified by: *[Signature]* 11933 10-22-96  
Registered Land Surveyor License No. Date  
Office of Right of Way and Surveys

I hereby certify that this plat was surveyed by me or under my direct supervision and that I am a duly Registered Land Surveyor under the Laws of the State of Minnesota; that all measurements are correctly shown on this plat; and that all monuments have been correctly placed as shown on this plat.

Certified by: *[Signature]* 22375 10-23-96  
Registered Land Surveyor License No. Date  
Mn/DOT District Office



**METRIC/ENGLISH CONVERSION**  
All plat distances are in meters unless denoted as feet (').  
To convert meters to (U.S. Survey) feet, multiply the meters by 3.2808333.  
To convert hectares to acres, multiply hectares by 2.471.  
To convert square meters to square feet, multiply the square meters by 10.764.

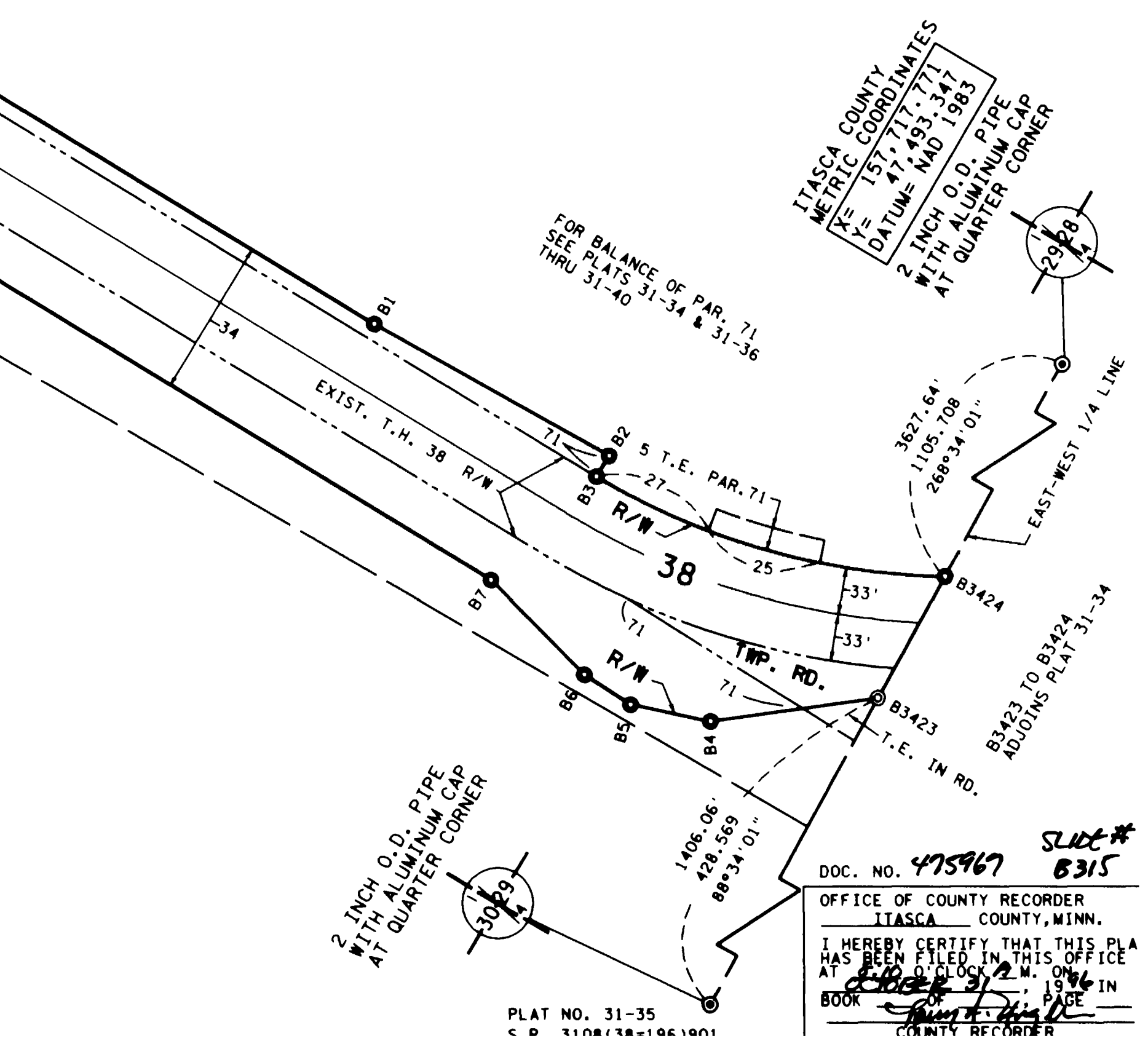
**AZIMUTH ORIENTATION**  
Plat azimuths are oriented to the County Coordinate System with 0 degrees 0 minutes 0 seconds being "GRID NORTH" and all distances are ground lengths.

**RIGHT OF WAY IN SECTION 29**

PARCEL	OWNER	LOCATION	TOWNSHIP CERTIFICATE NO.	NEW T.H. R/W		TEMPORARY EASEMENT		TEMPORARY EASEMENT EXPIRES ON	PERMANENT R/W INTEREST
				HECTARES	ACRES	HECTARES	ACRES		
71	UNITED STATES OF AMERICA	E1/2 NW1/4	2252	1.113	2.75	0.050	0.12	12-01-01	EASE.

NOTE: TEMPORARY EASEMENTS IN PUBLIC ROADS WILL EXPIRE ON 12-01-2001.

- SURVEY STANDARDS**
- The plat values, azimuths, and distances are based on the project control survey system.
  - The boundary monuments shown on this plat have been field checked for location. The standard deviation for the monument position is 30 millimeters.
  - The county coordinates shown on one monument are based on ties to national control monuments.
  - Certificates of Location have been filed at the County Recorder's Office and/or the County Surveyor's Office for the section corner monuments shown on this plat.
  - For details of this survey contact the Surveying and Mapping Section at the Minnesota Department of Transportation, DULUTH, Name of District.



DOC. NO. 475967  
SLUT# 6315  
OFFICE OF COUNTY RECORDER  
ITASCA COUNTY, MINN.  
I HEREBY CERTIFY THAT THIS PLAT HAS BEEN FILED IN THIS OFFICE AT 1:00 P.M. ON 10/26/96 IN BOOK 119 PAGE 119  
COUNTY RECORDER