

PLAT BOUNDARY DATA				
POINT		DISTANCE		AZIMUTH
		FEET	METERS	
B3424-B1	C	84.52'	25.762	145°52'36"
	ARC	84.62'	25.793	
	Δ			9°41'51"
	RADIUS	499.98'	152.395	
B1-B2		183.73'	56.001	141°01'41"
B2-B3		16.87'	5.142	51°01'39"
B3-B4	C	504.97'	153.915	135°18'29"
	ARC	505.81'	154.171	
	Δ			11°26'19"
	RADIUS	2533.58'	772.236	
B4-B5		784.09'	238.992	129°35'19"
B5-B6		353.36'	107.704	129°35'19"
B6-B3407		225.31'	68.674	129°35'19"
B3407-B3408		111.55'	34.000	219°35'19"
B3408-B9		353.59'	107.774	309°35'19"
B9-B10		126.76'	38.637	309°35'19"
B10-B11		14.79'	4.509	309°35'19"
B11-B12		166.14'	50.641	266°36'28"
B12-B13	C	429.65'	130.959	251°02'21"
	ARC	439.47'	133.952	
	Δ			42°06'00"
	RADIUS	598.10'	182.302	
B13-B14		65.62'	20.000	272°05'21"
B14-B15		41.11'	12.529	2°05'21"
B15-B16		70.44'	21.471	2°05'21"
B16-B17		65.62'	20.000	92°05'21"
B17-B18	C	349.52'	106.535	71°02'21"
	ARC	357.51'	108.970	
	Δ			42°06'00"
	RADIUS	486.55'	148.302	
B18-B19		132.09'	40.260	352°27'01"
B19-B20		670.76'	204.447	309°35'19"
B20-B21		397.12'	121.042	318°08'17"
B21-B22		205.39'	62.604	326°31'49"
B22-B3423		122.93'	37.469	321°44'16"
B3423-B3424		97.52'	29.723	88°34'02"

RIGHT OF WAY IN SECTION 29									
PARCEL	OWNER	LOCATION	TORRENS CERTIFICATE NO.	NEW T.H. R/W		TEMPORARY EASEMENT		TEMPORARY EASEMENT EXPIRES ON	PERMANENT R/W INTEREST
				HECTARES (MORE OR LESS)	ACRES	HECTARES (MORE OR LESS)	ACRES		
71	UNITED STATES OF AMERICA	E1/2 SW1/4 W1/2 SE1/4	2252	1.319	3.26	0.040	0.10	12-01-01	EASE.

NOTE: TEMPORARY EASEMENTS IN PUBLIC ROADS WILL EXPIRE ON 12-01-2001.

SURVEY STANDARDS

- The plat values, azimuths, and distances are based on the project control survey system.
- The boundary monuments shown on this plat have been field checked for location. The standard deviation for the monument position is 30 millimeters.
- The county coordinates shown on one monument are based on ties to national control monuments.
- Certificates of Location have been filed at the County Recorder's Office and/or the County Surveyor's Office for the section corner monuments shown on this plat.
- For details of this survey contact the Surveying and Mapping Section at the Minnesota Department of Transportation DULUTH
Name of District

AZIMUTH ORIENTATION

Plat azimuths are oriented to the County Coordinate System with 0 degrees 0 minutes 0 seconds being "GRID NORTH" and all distances are ground lengths.

METRIC/ENGLISH CONVERSION

All plat distances are in meters unless denoted as feet ('').
To convert meters to (U.S. Survey) feet, multiply the meters by 3.2808333.
To convert hectares to acres, multiply hectares by 2.471.
To convert square meters to square feet, multiply the square meters by 10.764.

**MINNESOTA DEPARTMENT OF TRANSPORTATION
RIGHT OF WAY PLAT NO. 31-34**

STATE PROJECT NO. 3108(38-196)901
IN THE SOUTHEAST QUARTER OF SECTION 29, T. 60 N., R. 26 W.,
IN THE SOUTHWEST QUARTER OF SECTION 29, T. 60 N., R. 26 W.,
ITASCA COUNTY, MINNESOTA

THE COMMISSIONER OF TRANSPORTATION IS HEREBY DESIGNATING THE DEFINITE LOCATION OF TRUNK HIGHWAY NO. 38 FROM JAYNES TO BIGFORK

as shown on this plat prepared by the State of Minnesota Department of Transportation is hereby certified as the official plat of that portion of said T.H. 38 within the designated portion of Section 29 and the Commissioner's Order therefor, pursuant to Minnesota Statutes, section 160.085, section 160.14 subd. 1, section 161.16 subd. 2, and section 161.18.

Commissioner's Order No.	Location	Nature of Interest
82068	PLATS 31-34 THRU 31-41	Definite location, width, access, temporary easement and building removal easement.

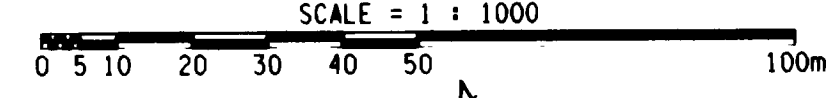
Certified by
James N. Denn
Commissioner of Transportation
[Signature]
by K.F. Rasmussen Date 10-22-96
Director, Office of Right of Way and Surveys

I hereby certify that this plat was prepared by me or under my direct supervision and that I am a duly Registered Land Surveyor under the Laws of the State of Minnesota; that this plat meets requirements of Minnesota Statutes, section 160.085, section 160.14 subd. 1, section 161.16 subd. 2, and section 161.18; that parcel ownerships are correctly described and delineated on the plat; and that the proposed right-of-way boundary lines are correctly designated on the plat.

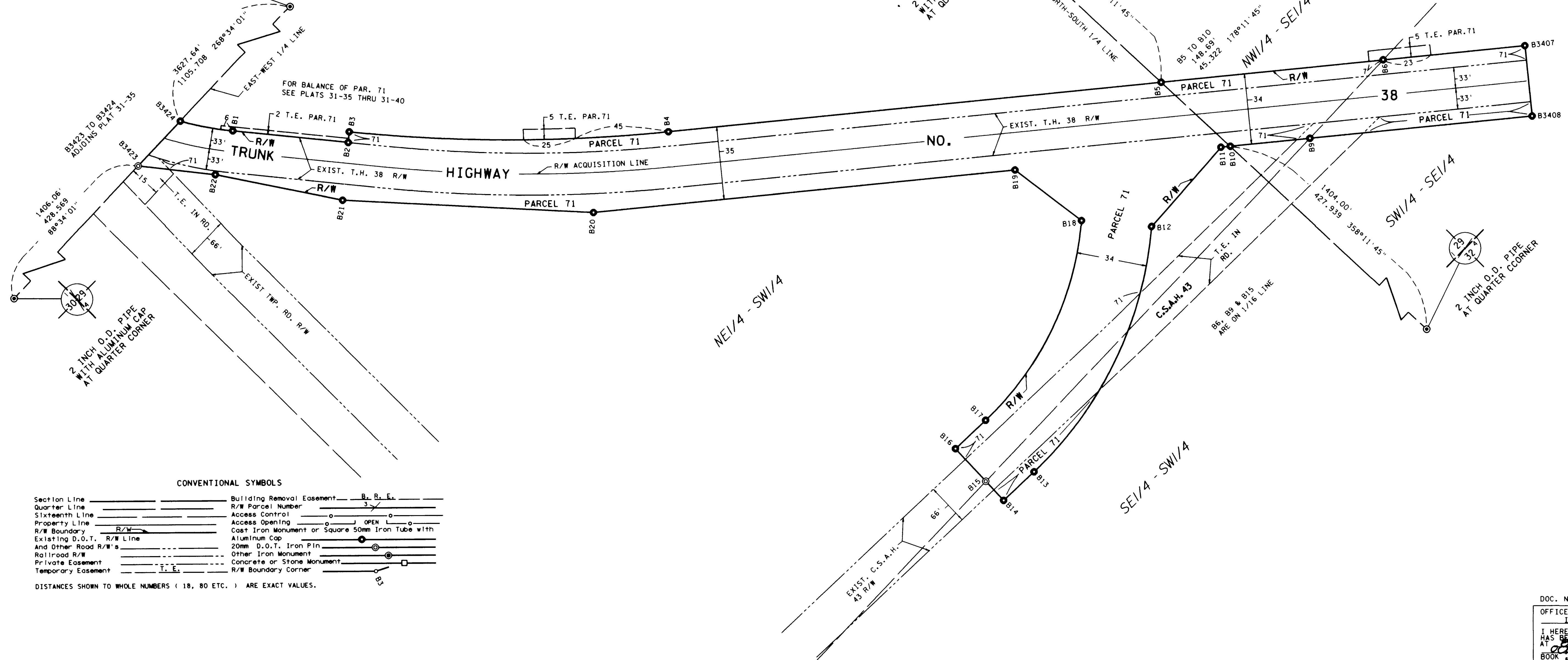
Certified by *[Signature]* 11933 10-22-96
Registered Land Surveyor License No. Date
Office of Right of Way and Surveys

I hereby certify that this plat was surveyed by me or under my direct supervision and that I am a duly Registered Land Surveyor under the Laws of the State of Minnesota; that all measurements are correctly shown on this plat; and that all monuments have been correctly placed as shown on this plat.

Certified by *[Signature]* 22375 10-29-96
Registered Land Surveyor License No. Date
Mn/DOT District Office



ITASCA COUNTY
METRIC COORDINATES
NAD 83
EPC
DATUM: NAD 1983
41°43'34.7717
157°17'41.7717
2 INCH O.D. PIPE
WITH ALUMINUM CAP
AT QUARTER CORNER



CONVENTIONAL SYMBOLS

Section Line	Building Removal Easement	B, R, E.
Quarter Line	R/W Parcel Number	3
Sixteenth Line	Access Control	o
Property Line	Access Opening	o
R/W Boundary	Cost Iron Monument or Square 50mm Iron Tube with	o
Existing D.O.T. R/W Line	Aluminum Cap	o
And Other Road R/W's	20mm D.O.T. Iron Pin	o
Railroad R/W	Other Iron Monument	o
Private Easement	Concrete or Stone Monument	o
Temporary Easement	R/W Boundary Corner	o

DISTANCES SHOWN TO WHOLE NUMBERS (18, 80 ETC.) ARE EXACT VALUES.

DOC. NO. 475966
SL06# B315
OFFICE OF COUNTY RECORDER
ITASCA COUNTY, MINN.
I HEREBY CERTIFY THAT THIS PLAT
HAS BEEN FILED IN THIS OFFICE
AT
OCTOBER 12 1996
BOOK OF PAGE IN
COUNTY RECORDER