

RIGHT OF WAY IN SECTION 20									
PARCEL	OWNER	LOCATION	TOWNSHIP CERTIFICATE NO.	NEW T.H. R/W		TEMPORARY EASEMENT		TEMPORARY EASEMENT EXPIRES ON	PERMANENT R/W INTEREST
				HECTARES (MORE OR LESS)	ACRES	HECTARES (MORE OR LESS)	ACRES		
71	UNITED STATES OF AMERICA	E1/2 NW1/4 E1/2 SW1/4 GOV'T LOT 1 NW1/4NW1/4	2252	2.553	6.31	0.324	0.80	12-01-01	EASE.

NOTE: TEMPORARY EASEMENTS IN PUBLIC ROADS WILL EXPIRE ON 12-01-2001.

MINNESOTA DEPARTMENT OF TRANSPORTATION
RIGHT OF WAY PLAT NO. 31-36

STATE PROJECT NO. 3108(38)=196/901
IN THE WEST HALF OF SECTION 20, T. 60 N., R. 26 W.,
ITASCA COUNTY, MINNESOTA

THE COMMISSIONER OF TRANSPORTATION IS HEREBY DESIGNATING THE DEFINITE LOCATION OF TRUNK HIGHWAY NO. 38 FROM JAYNES TO BIGFORK

as shown on this plat prepared by the State of Minnesota Department of Transportation is hereby certified as the official plat of that portion of said T.H. 38 within the designated portion of Section 20 and the Commissioner's Order therefor pursuant to Minnesota Statutes, section 160.085, section 160.14 subd. 1, section 161.16 subd. 2, and section 161.18.

Commissioner's Order No.	Location	Nature of Interest
82068	PLATS 31-34 THRU 31-41	Definite location, width, access, temporary easement and building removal easement.

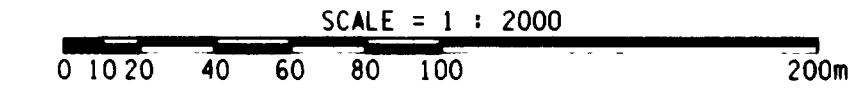
Certified by
James N. Dann
Commissioner of Transportation
K.F. Rasmussen 10-22-96
by K.F. Rasmussen Date
Director, Office of Right of Way and Surveys

I hereby certify that this plat was prepared by me or under my direct supervision and that I am a duly Registered Land Surveyor under the Laws of the State of Minnesota; that this plat meets requirements of Minnesota Statutes, section 160.085, section 160.14 subd. 1, section 161.16 subd. 2, and section 161.18; that parcel ownerships are correctly described and delineated on the plat; and that the proposed right-of-way boundary lines are correctly designated on the plat.

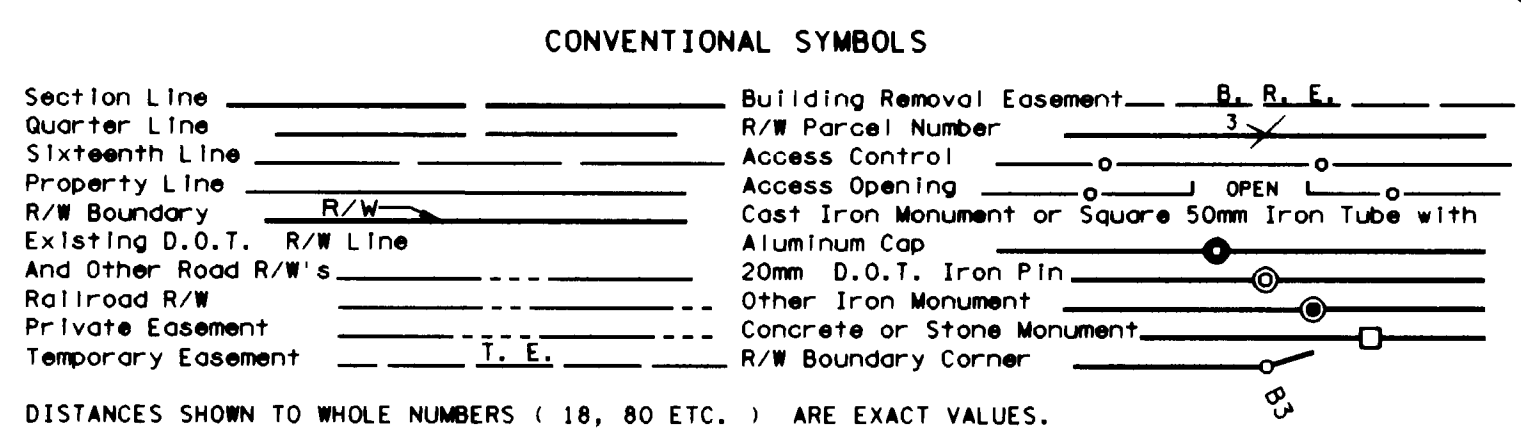
Certified by *R. Eldon Lohm* 11933 10-22-96
Registered Land Surveyor License No. Date
Office of Right of Way and Surveys

I hereby certify that this plat was surveyed by me or under my direct supervision and that I am a duly Registered Land Surveyor under the Laws of the State of Minnesota; that all measurements are correctly shown on this plat; and that all monuments have been correctly placed as shown on this plat.

Certified by *Gerald U. Swada* 22375 10-22-96
Registered Land Surveyor License No. Date
MnDOT District Office



PLAT BOUNDARY DATA			
POINT	DISTANCE	FEET	AZIMUTH
0-3626-B1	C 109.00'	33.224	185°07'41"
	ARC 109.10'	33.254	
	Δ		8°30'38"
	RADIUS 734.52'	223.881	
-B2	247.64'	75.480	180°52'25"
-B3	19.68'	6.000	90°52'25"
-B4	492.13'	150.000	180°52'25"
-B5	19.68'	6.000	270°52'25"
-B6	1651.22'	503.294	180°52'25"
-B7	88.01'	26.827	181°23'45"
-B8	326.37'	99.477	181°23'45"
-B9	248.95'	75.881	181°55'05"
-B10	412.36'	125.687	181°23'51"
0-B3509	1578.49'	481.126	180°52'26"
0-3509-B3508	111.58'	34.011	269°25'58"
0-3508-B11	1581.30'	481.981	0°52'26"
1-B12	414.40'	126.309	1°23'51"
2-B13	248.95'	75.879	1°55'05"
3-B14	322.15'	98.190	1°23'45"
4-B15	90.20'	27.493	1°23'45"
5-B16	1157.40'	352.777	0°52'25"
6-B17	359.82'	109.674	269°32'23"
7-B18	91.86'	28.000	359°32'23"
8-B19	361.96'	110.326	89°32'23"
9-B20	401.94'	122.511	0°52'25"
10-B21	19.68'	6.000	270°52'25"
11-B22	492.12'	150.000	0°52'25"
12-B23	19.68'	6.000	90°52'25"
13-B24	247.64'	75.480	0°52'25"
4-B3625	C 105.86'	32.267	4°27'35"
	ARC 105.93'	32.288	
	Δ		7°10'25"
	RADIUS 846.06'	257.881	
625-B3626	113.05'	34.459	89°19'46"



- SURVEY STANDARDS
- The plat values, azimuths, and distances are based on the project control survey system.
 - The boundary monuments shown on this plat have been field checked for location. The standard deviation for the monument position is 30 millimeters.
 - The county coordinates shown on one monument are based on ties to national control monuments.
 - Certificates of Location have been filed at the County Recorder's Office and/or the County Surveyor's Office for the section corner monuments shown on this plat.
 - For details of this survey contact the Surveying and Mapping Section at the Minnesota Department of Transportation
DULUTH
Name of DISTRICT

METRIC/ENGLISH CONVERSION
All plat distances are in meters unless denoted as feet (').
To convert meters to (U.S. Survey) feet, multiply the meters by 3.28083333.
To convert hectares to acres, multiply hectares by 2.471.
To convert square meters to square feet, multiply the square meters by 10.764.

AZIMUTH ORIENTATION
Plat azimuths are oriented to the County Coordinate System with 0 degrees 0 minutes 0 seconds being "GRID NORTH" and all distances are ground lengths.

SLIDE#
DOC. NO. 475968 B315
OFFICE OF COUNTY RECORDER
ITASCA COUNTY, MINN.
I HEREBY CERTIFY THAT THIS PLAT HAS BEEN FILED IN THIS OFFICE AT 10:30 A.M. ON 10/22/96 IN BOOK 1976 IN COUNTY RECORDER

PLAT NO. 31-36
S.P. 3108(38)=196/901