

PLAT BOUNDARY DATA			
POINT	DISTANCE		AZIMUTH
	FEET	METERS	
B3715-B1	2435.37'	742.301	174°43'09"
B1-B2	C 501.06'	152.723	168°17'10"
ARC	502.12'	153.045	
Δ			12°51'58"
RADIUS	2236.06'	681.551	
B2-B3	1442.04'	439.536	161°51'11"
B3-B4	C 433.73'	132.200	177°40'53"
ARC	439.29'	133.897	
Δ			31°39'25"
RADIUS	795.07'	242.339	
B4-B5	26.25'	8.000	103°30'36"
B5-B6	C 135.29'	41.236	198°14'03"
ARC	135.44'	41.283	
Δ			9°26'56"
RADIUS	821.32'	250.339	
B6-B7	26.25'	8.000	292°57'32"
B7-B8	C 178.83'	54.506	202°57'32"
B8-B3626	C 173.63'	52.923	196°10'16"
ARC	174.04'	53.047	
Δ			13°34'33"
RADIUS	734.52'	223.881	
B3626-B3625	113.05'	34.459	269°19'46"
B3625-B9	C 219.59'	66.930	15°30'10"
ARC	220.21'	67.119	
Δ			14°54'45"
RADIUS	846.06'	257.881	
B9-B10	178.83'	54.506	22°57'32"
B10-B11	C 479.93'	146.283	2°24'20"
ARC	490.38'	149.468	
Δ			41°06'20"
RADIUS	683.53'	208.339	
B11-B12	1442.04'	439.536	341°51'11"
B12-B13	C 526.06'	160.342	348°17'10"
ARC	527.16'	160.680	
Δ			12°51'58"
RADIUS	2347.60'	715.551	
B13-B3714	2444.14'	744.976	354°43'09"
B3714-B3715	111.89'	34.105	89°13'01"

MINNESOTA DEPARTMENT OF TRANSPORTATION
RIGHT OF WAY PLAT NO. 31-37

STATE PROJECT NO. 3108(38-196)901
IN THE WEST HALF OF SECTION 17, T. 60 N., R. 26 W.,
ITASCA COUNTY, MINNESOTA

THE COMMISSIONER OF TRANSPORTATION IS HEREBY DESIGNATING THE DEFINITE
LOCATION OF TRUNK HIGHWAY NO. 38 FROM JAYNES TO BIGFORK

as shown on this plat prepared by the State of Minnesota Department of Transportation is hereby certified as the official plat of that portion of said T.W. 38 within the designated portion of Section 17 and the Commissioner's Order therefor, pursuant to Minnesota Statutes, section 160.085, section 160.14 subd. 1, section 161.16 subd. 2, and section 161.18.

Commissioner's Order No.	Location	Nature of Interest
82068	PLATS 31-34 THRU 31-41	Definite location, width, access, temporary easement and building removal easement.

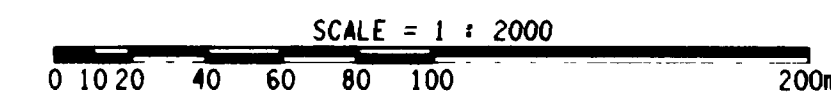
Certified by
James N. Denn
Commissioner of Transportation
K.F. Roemussen 10-22-96
by K.F. Roemussen Date
Director, Office of Right of Way and Surveys

I hereby certify that this plat was prepared by me or under my direct supervision and that I am a duly Registered Land Surveyor under the Laws of the State of Minnesota; that this plat meets requirements of Minnesota Statutes, section 160.085, section 160.14 subd. 1, section 161.16 subd. 2, and section 161.18; that parcel ownerships are correctly described and delineated on the plat; and that the proposed right-of-way boundary lines are correctly designated on the plat.

Certified by *Eden Jelen 11933 10-23-96*
Registered Land Surveyor License No. Date
Office of Right of Way and Surveys

I hereby certify that this plat was surveyed by me or under my direct supervision and that I am a duly Registered Land Surveyor under the Laws of the State of Minnesota; that all measurements are correctly shown on this plat; and that all monuments have been correctly placed as shown on this plat.

Certified by *Gerald H. Guade 22375 10-29-96*
Registered Land Surveyor License No. Date
MNDOT District Office



RIGHT OF WAY IN SECTION 17									
PARCEL	OWNER	LOCATION	TOWNSHIP CERTIFICATE NO.	NEW T.W. R/W		TEMPORARY EASEMENT		TEMPORARY EASEMENT EXPIRES ON	PERMANENT R/W INTEREST
				HECTARES (MORE OR LESS)	ACRES	HECTARES (MORE OR LESS)	ACRES		
71	UNITED STATES OF AMERICA	W1/2 NW1/4 SW1/4	2252	2.277	5.63	0.161	0.40	12-01-01	EASE.

CONVENTIONAL SYMBOLS

Section Line	Building Removal Easement	B. B. E.
Quarter Line	R/W Parcel Number	3
Sixteenth Line	Access Control	o
Property Line	Access Opening	o
R/W Boundary	Cast Iron Monument or Square 50mm Iron Tube with Aluminum Cap	o
Existing D.O.T. R/W Line	20mm D.O.T. Iron Pin	o
And Other Road R/W's	Other Iron Monument	o
Railroad R/W	Concrete or Stone Monument	o
Private Easement	R/W Boundary Corner	o
Temporary Easement		

DISTANCES SHOWN TO WHOLE NUMBERS (18, 80 ETC.) ARE EXACT VALUES.

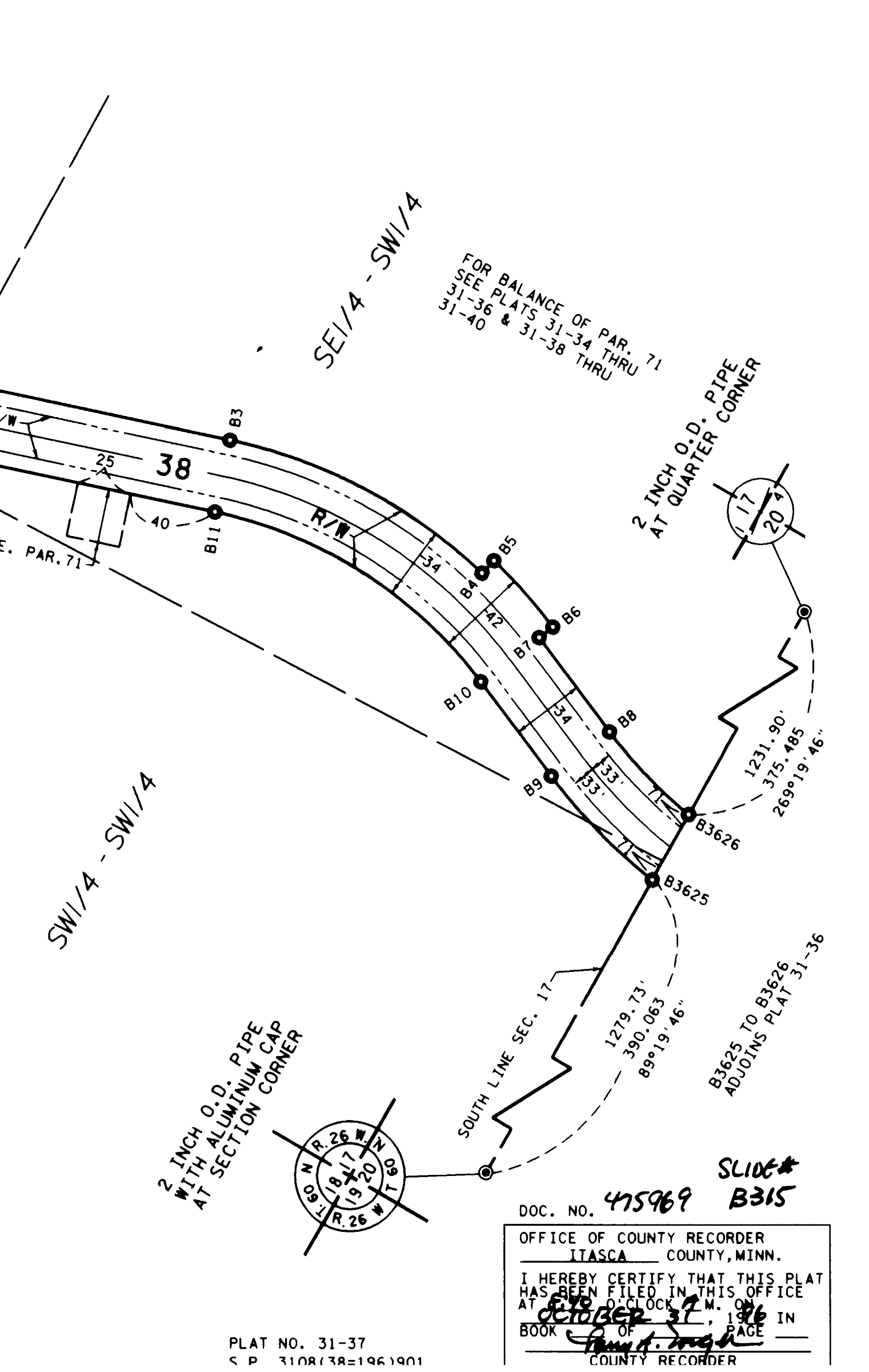
METRIC/ENGLISH CONVERSION
All plat distances are in meters unless denoted as feet (').
To convert meters to (U.S. Survey) feet, multiply the meters by 3.28083333.
To convert hectares to acres, multiply hectares by 2.471.
To convert square meters to square feet, multiply the square meters by 10.764.

SURVEY STANDARDS

- The plat values, azimuths, and distances are based on the project control survey system.
- The boundary monuments shown on this plat have been field checked for location. The standard deviation for the monument position is 30 millimeters.
- The county coordinates shown on one monument are based on ties to national control monuments.
- Certificates of Location have been filed at the County Recorder's Office and/or the County Surveyor's Office for the section corner monuments shown on this plat.
- For details of this survey contact the Surveying and Mapping Section at the Minnesota Department of Transportation DULUTH
Name of District

AZIMUTH ORIENTATION

Plat azimuths are oriented to the County Coordinate System with 0 degrees 0 minutes 0 seconds being "GRID NORTH" and all distances are ground lengths.



DOC. NO. 475969 B315
SL106#
OFFICE OF COUNTY RECORDER
ITASCA COUNTY, MINN.
I HEREBY CERTIFY THAT THIS PLAT
HAS BEEN FILED IN THIS OFFICE
AT 10:00 A.M. 10/29/96
BOOK 31-37 PAGE 18
COUNTY RECORDER