

PLAT BOUNDARY DATA				
POINT		DISTANCE		AZIMUTH
		FEET	METERS	
B3910-B1	C	318.77'	97.160	193°30'25"
	ARC	319.31'	97.326	
	Δ			11°34'12"
	RADIUS	1581.25'	481.965	
B1-B2		1291.02'	393.505	187°43'19"
B2-B3		6.56'	2.000	97°43'19"
B3-B4		574.15'	175.000	187°43'19"
B4-B5		6.56'	2.000	277°43'19"
B5-B3808		436.54'	133.059	187°43'19"
B3808-B3807		119.65'	36.468	268°32'00"
B3807-B6		1029.80'	313.883	7°43'19"
B6-B7		6.56'	2.000	97°43'19"
B7-B8		1291.02'	393.505	7°43'19"
B8-B3909	C	300.25'	91.517	12°48'36"
	ARC	300.65'	91.637	
	Δ			10°10'33"
	RADIUS	1692.80'	515.965	
B3909-B3910		118.44'	36.100	88°56'37"

MINNESOTA DEPARTMENT OF TRANSPORTATION  
RIGHT OF WAY PLAT NO. 31-39

STATE PROJECT NO. 3108(38)=1961901  
IN THE SOUTHWEST QUARTER OF SECTION 5, T. 60 N., R. 26 W.,  
ITASCA COUNTY, MINNESOTA

THE COMMISSIONER OF TRANSPORTATION IS HEREBY DESIGNATING THE DEFINITE LOCATION OF TRUNK HIGHWAY NO. 38 FROM JAYNES TO BIGFORK

as shown on this plat prepared by the State of Minnesota Department of Transportation is hereby certified as the official plat of that portion of said T.H. 38 within the designated portion of section 5 and the Commissioner's Order therefor pursuant to Minnesota Statutes, section 160.085, section 160.14 subd. 1, section 161.16 subd. 2, and section 161.18.

Commissioner's Order No.	Location	Nature of Interest
82068	PLATS 31-34 THRU 31-41	Definite location, width, access, temporary easement and building removal easement.

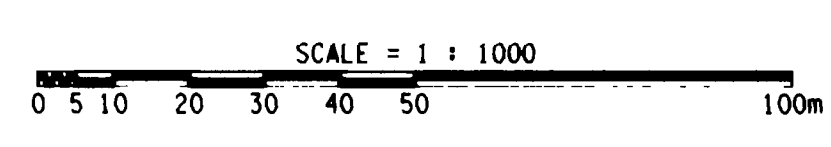
Certified by  
James N. Dann  
Commissioner of Transportation  
*[Signature]* 10-22-96  
by K.F. Rasmussen Date  
Director, Office of Right of Way and Surveys

I hereby certify that this plat was prepared by me or under my direct supervision and that I am a duly Registered Land Surveyor under the Laws of the State of Minnesota; that this plat meets requirements of Minnesota Statutes, section 160.085, section 160.14 subd. 1, section 161.16 subd. 2, and section 161.18; that parcel ownerships are correctly described and delineated on the plat; and that the proposed right-of-way boundary lines are correctly designated on the plat.

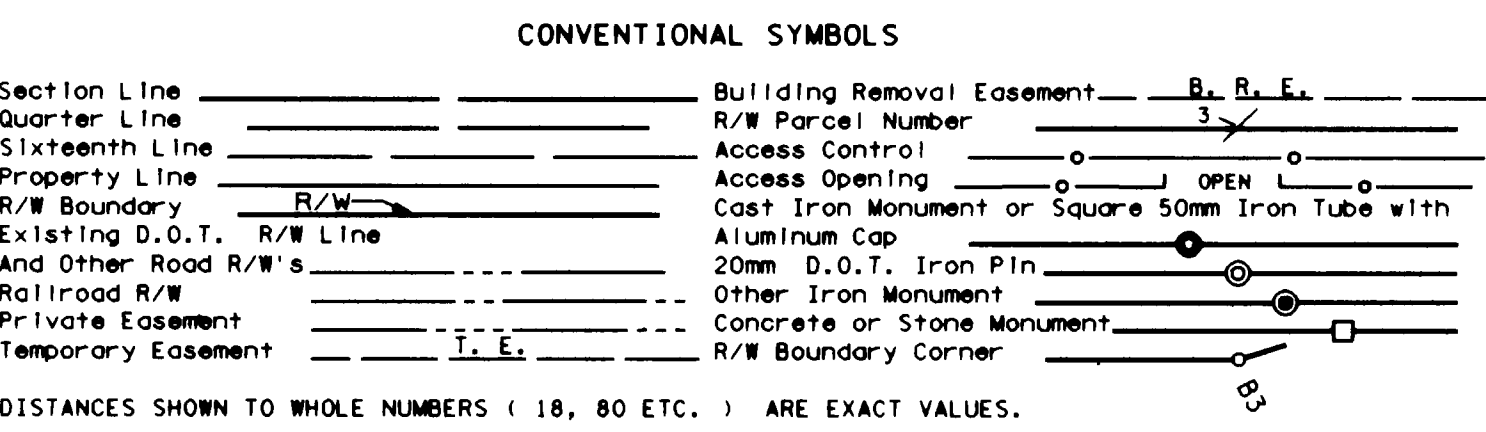
Certified by *[Signature]* 11933 10-22-96  
Registered Land Surveyor License No. Date  
Office of Right of Way and Surveys

I hereby certify that this plat was surveyed by me or under my direct supervision and that I am a duly Registered Land Surveyor under the Laws of the State of Minnesota; that all measurements are correctly shown on this plat and that all monuments have been correctly placed as shown on this plat.

Certified by *[Signature]* 22375 10-23-96  
Registered Land Surveyor License No. Date  
Mn/DOT District Office



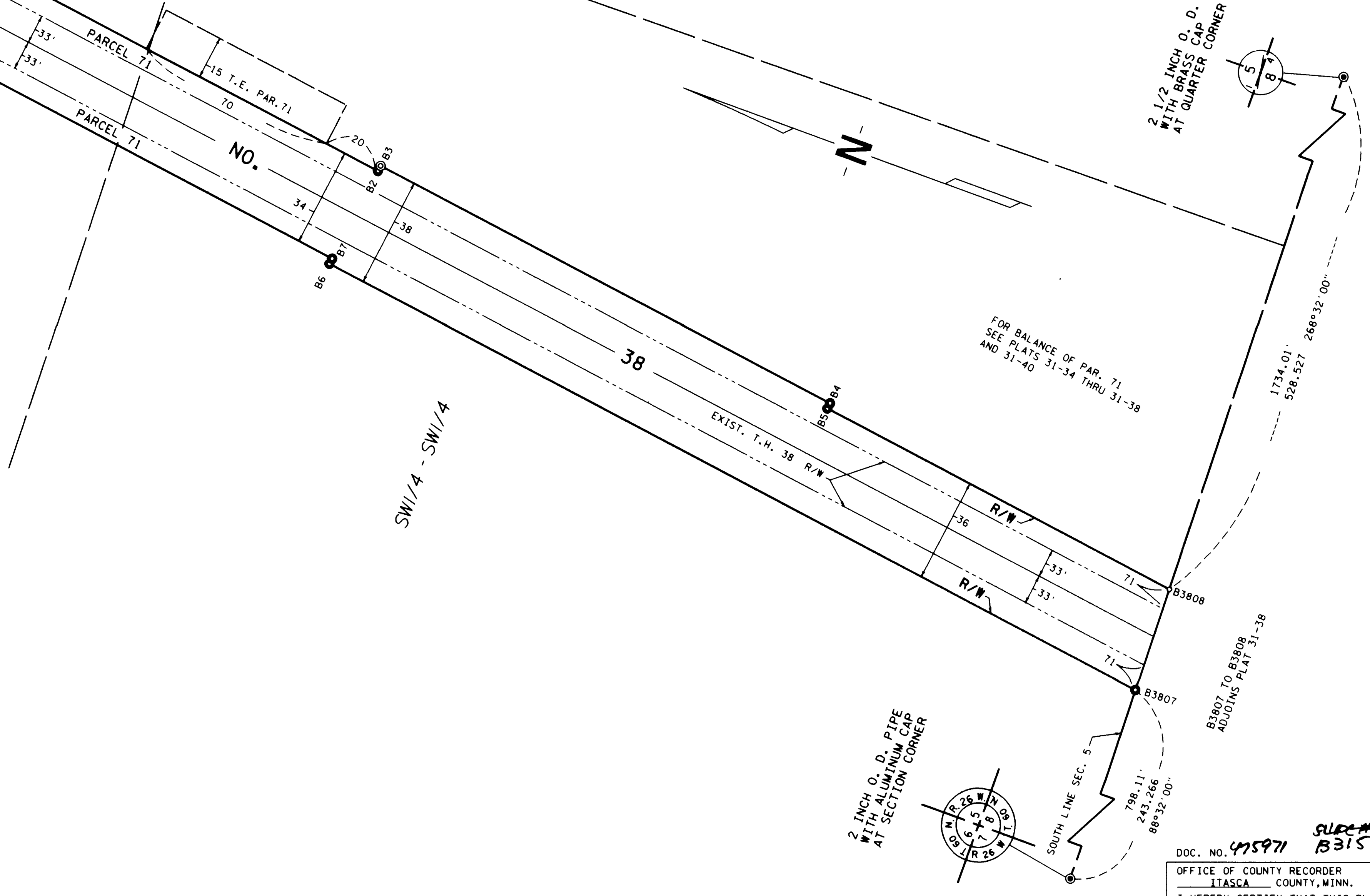
RIGHT OF WAY IN SECTION 5									
PARCEL	OWNER	LOCATION	TOWNSHIP CERTIFICATE NO.	NEW T.W. R/W		TEMPORARY EASEMENT		TEMPORARY EASEMENT EXPIRES ON	PERMANENT R/W INTEREST
				HECTARES (MORE OR LESS)	ACRES (MORE OR LESS)	HECTARES (MORE OR LESS)	ACRES (MORE OR LESS)		
71	UNITED STATES OF AMERICA	W1/2 SW1/4 NE1/4SW1/4		1.207	2.98	0.115	0.28	12-01-01	EASE.



METRIC/ENGLISH CONVERSION  
All plat distances are in meters unless denoted as feet (').  
To convert meters to (U.S. Survey) feet, multiply the meters by 3.28083333.  
To convert hectares to acres, multiply hectares by 2.471.  
To convert square meters to square feet, multiply the square meters by 10.764.

AZIMUTH ORIENTATION  
Plat azimuths are oriented to the County Coordinate System with 0 degrees 0 minutes 0 seconds being "GRID NORTH" and all distances are ground lengths.

- SURVEY STANDARDS
- The plat values, azimuths, and distances are based on the project control survey system.
  - The boundary monuments shown on this plat have been field checked for location. The standard deviation for the monument position is 30 millimeters.
  - The county coordinates shown on one monument are based on ties to national control monuments.
  - Certificates of Location have been filed at the County Recorder's Office and/or the County Surveyor's Office for the section corner monuments shown on this plat.
  - For details of this survey contact the Surveying and Mapping Section at the Minnesota Department of Transportation  
DULUTH  
Name of District



DOC. NO. 475971  
SLIP# B315  
OFFICE OF COUNTY RECORDER  
ITASCA COUNTY, MINN.  
I HEREBY CERTIFY THAT THIS PLAT HAS BEEN FILED IN THIS OFFICE AT 1:00 P.M. ON 10/26/96 IN BOOK 1926 IN PAGE 1926  
*[Signature]*  
COUNTY RECORDER