

THE COMMISSIONER OF TRANSPORTATION IS HEREBY DESIGNATING THE DEFINITE LOCATION OF TRUNK HIGHWAY NO. 38 FROM THE JUNCTION OF COUNTY STATE AID HIGHWAY 49 TO THE JUNCTION OF COUNTY STATE AID HIGHWAY NO. 19

as shown on this plat prepared by the State of Minnesota Department of Transportation is hereby certified as the official plat of that portion of said T.M. 38 within the designated portion of Section 36 and the Commissioner's Order therefor, pursuant to Minnesota Statutes, section 160.085, section 160.14 subd. 1, section 161.16 subd. 2, and section 161.18.

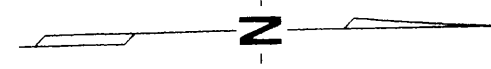
It is further ordered that it is necessary to acquire all trees, shrubs, grass and herbage within the right of way of said Trunk Highway, and to keep and have the exclusive control of the same.

Commissioner's Order No.	Location	Nature of Interest
86748	PLAT 31-95	Definite location, width, access, temporary and permanent easement.

Certified by Douglas J. Weiszhaar  
Acting Commissioner of Transportation  
Date 01/02/03  
by ALLAN E. PINT  
Director, Office of Land Management

I hereby certify that this plat was surveyed and prepared by me or under my direct supervision and that I am a duly Licensed Land Surveyor under the Laws of the State of Minnesota; that all measurements are correctly shown on this plat; that all monuments have been correctly placed as shown on this plat; that Certificates of Location for the monumented public land survey corners as shown on this plat are on file in the County Recorder's Office; that this plat meets requirements of Minnesota Statutes, section 160.085, section 160.14 subd. 1, section 161.16 subd. 2, and section 161.18; that parcel ownerships are correctly described and that the proposed right-of-way boundary lines are correctly designated on the plat.

Certified by Bruce J. Rasmussen 21107 12-19-2002  
Licensed Land Surveyor License No. Date  
Mn/DOT District Office

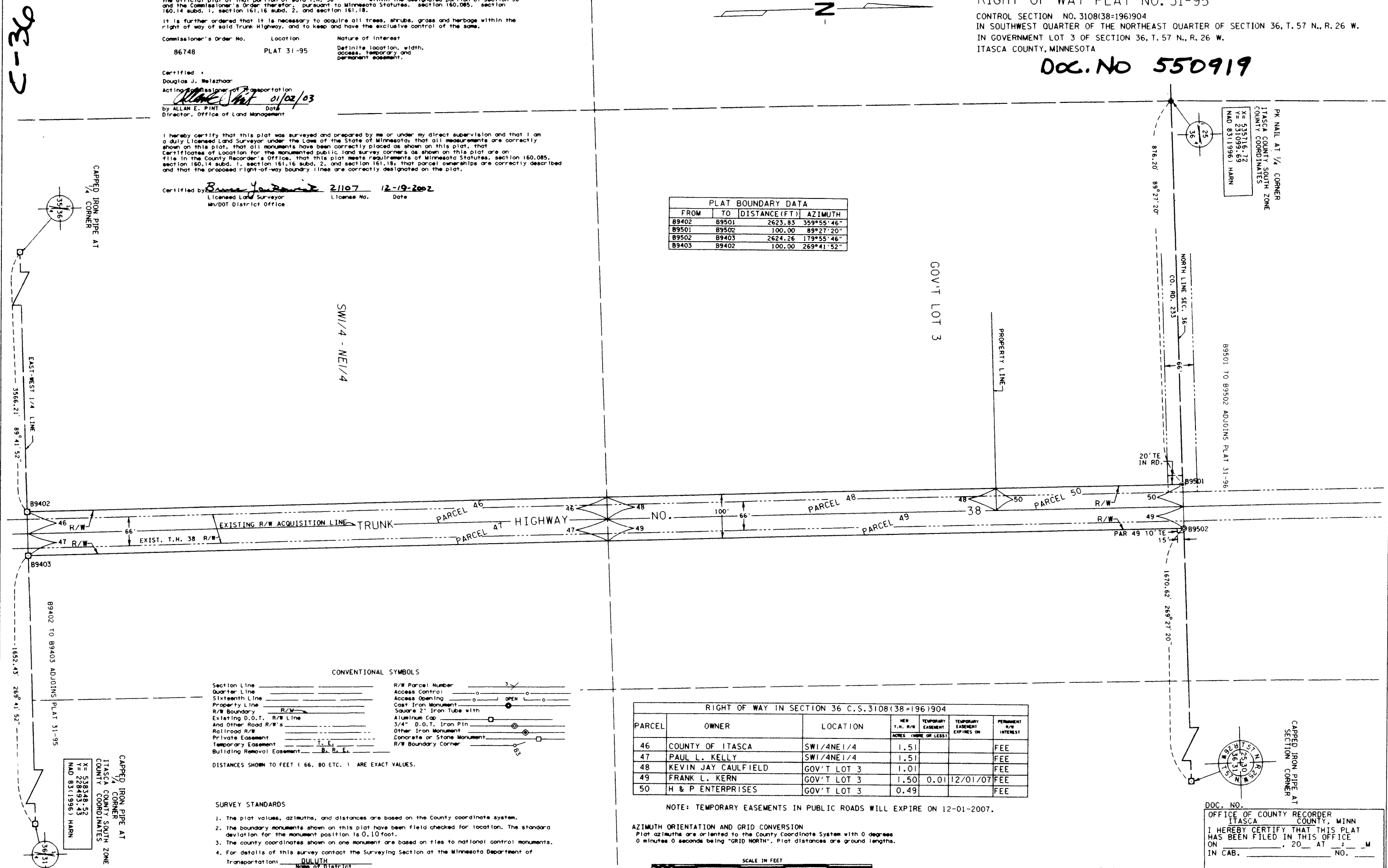


MINNESOTA DEPARTMENT OF TRANSPORTATION  
RIGHT OF WAY PLAT NO. 31-95

CONTROL SECTION NO. 3108(38=196)904  
IN SOUTHWEST QUARTER OF THE NORTHEAST QUARTER OF SECTION 36, T. 57 N., R. 26 W.  
IN GOVERNMENT LOT 3 OF SECTION 36, T. 57 N., R. 26 W.  
ITASCA COUNTY, MINNESOTA

DOC. NO 550919

FROM	TO	DISTANCE (FT)	AZIMUTH
B9402	B9501	2623.83	359°55'46"
B9501	B9502	100.00	89°27'20"
B9502	B9403	2624.26	179°55'46"
B9403	B9402	100.00	269°41'52"



SW 1/4 - NE 1/4

GOV'T LOT 3

Symbol Description	Symbol Description
Section Line	R/W Parcel Number
Quarter Line	Access Control
Sixteenth Line	Access Opening
Property Line	Cast Iron Monument
R/W Boundary	Square 2" Iron Tube with Aluminum Cap
Existing D.O.T. R/W Line	3/4" D.O.T. Iron Pin
And Other Road R/W's	Other Iron Monument
Railroad R/W	Concrete or Stone Monument
Private Easement	R/W Boundary Corner
Temporary Easement	
Building Removal Easement	

DISTANCES SHOWN TO FEET (66, 80 ETC.) ARE EXACT VALUES.

SURVEY STANDARDS

- The plat values, azimuths, and distances are based on the County coordinate system.
- The boundary monuments shown on this plat have been field checked for location. The standard deviation for the monument position is 0.10 foot.
- The county coordinates shown on one monument are based on ties to national control monuments.
- For details of this survey contact the Surveying Section at the Minnesota Department of Transportation.

PARCEL	OWNER	LOCATION	NEW T.M. R/W ACRES (MORE OR LESS)	TEMPORARY EASEMENT	TEMPORARY EASEMENT EXPIRES ON	PERMANENT R/W INTEREST
46	COUNTY OF ITASCA	SW1/4NE1/4	1.51			FEE
47	PAUL L. KELLY	SW1/4NE1/4	1.51			FEE
48	KEVIN JAY CAULFIELD	GOV'T LOT 3	1.01			FEE
49	FRANK L. KERN	GOV'T LOT 3	1.50	0.01	12/01/07	FEE
50	H & P ENTERPRISES	GOV'T LOT 3	0.49			FEE

NOTE: TEMPORARY EASEMENTS IN PUBLIC ROADS WILL EXPIRE ON 12-01-2007.

AZIMUTH ORIENTATION AND GRID CONVERSION  
Plat azimuths are oriented to the County Coordinate System with 0 degrees 0 minutes 0 seconds being "GRID NORTH". Plat distances are ground lengths.



PLAT NO. 31-95  
C.S. 3108(38=196)904

DOC. NO. 550919  
OFFICE OF COUNTY RECORDER  
ITASCA COUNTY, MINN.  
I HEREBY CERTIFY THAT THIS PLAT  
HAS BEEN FILED IN THIS OFFICE  
ON \_\_\_\_\_, 20\_\_ AT \_\_\_\_\_ M  
IN CAB. \_\_\_\_\_ NO. \_\_\_\_\_  
COUNTY RECORDER

31-95  
C-36

CAPPED IRON PIPE AT  
1/4 CORNER

CAPPED IRON PIPE AT  
1/4 CORNER SOUTH ZONE  
ITASCA COUNTY COORDINATES  
X = 538348.55  
Y = 228493.43  
NAD 83(1996) HARN

OFFICE OF THE COUNTY RECORDER  
ITASCA COUNTY, MINNESOTA

Doc. No. **A 550919**

Certified filed and recorded on  
01/13/2008 at 1:20 pm

Jean E. Bergeson, Itasca County Recorder  
by CV, Deputy

