

31-94  
C-36

THE COMMISSIONER OF TRANSPORTATION IS HEREBY DESIGNATING THE DEFINITE LOCATION OF TRUNK HIGHWAY NO. 38 FROM THE JUNCTION OF COUNTY STATE AID HIGHWAY 49 TO THE JUNCTION OF COUNTY STATE AID HIGHWAY NO. 19

As shown on this plat prepared by the State of Minnesota Department of Transportation is hereby certified as the official plat of that portion of said T.H. 38 within the designated portion of Section 36 and the Commissioner's Order therefor, pursuant to Minnesota Statutes, section 160.085, section 160.14 subd. 1, section 161.16 subd. 2, and section 161.18.

It is further ordered that it is necessary to acquire all trees, shrubs, grass and herbage within the right of way of said Trunk Highway, and to keep and have the exclusive control of the same.

Commissioner's Order No. 86747 Location PLAT 31-94 Nature of Interest Definite location, width, access, temporary and permanent easement.

Certified by Douglas J. Welszhaar  
Acting Commissioner of Transportation  
Date 01/02/03  
by ALLAN E. PINT  
Date  
Director, Office of Land Management

I hereby certify that this plat was surveyed and prepared by me or under my direct supervision and that I am a duly Licensed Land Surveyor under the Laws of the State of Minnesota; that all measurements are correctly shown on this plat, that all monuments have been correctly placed as shown on this plat, that Certificates of Location for the monumented public land survey corners as shown on this plat are on file in the County Recorder's Office, that this plat meets requirements of Minnesota Statutes, section 160.085, section 160.14 subd. 1, section 161.16 subd. 2, and section 161.18; that parcel ownerships are correctly described and that the proposed right-of-way boundary lines are correctly designated on the plat.

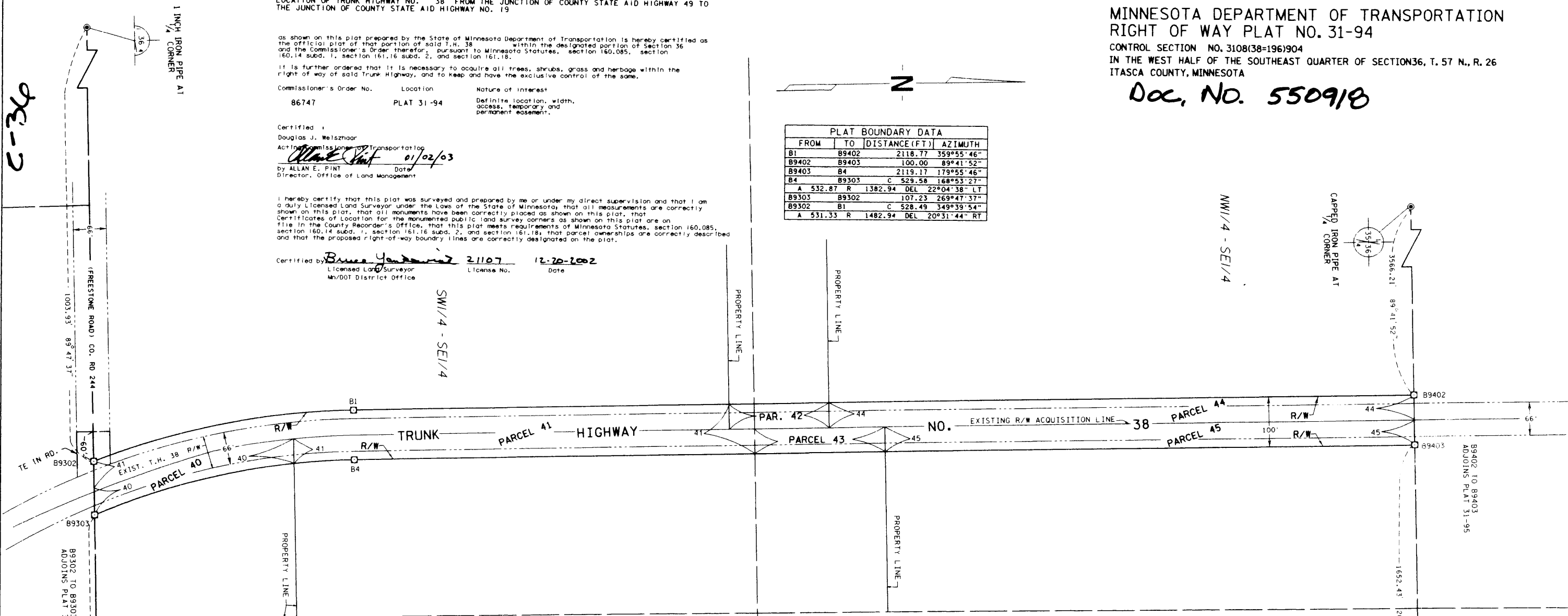
Certified by Bruce J. Anderson  
Licensed Land Surveyor License No. 21107 Date 12-20-2002  
Mn/DOT District Office

PLAT BOUNDARY DATA

FROM	TO	DISTANCE (FT)	AZIMUTH
B1	B9402	2118.77	359°55'46"
B9402	B9403	100.00	89°41'52"
B9403	B4	2119.17	179°55'46"
B4	B9303	C 529.58	168°53'27"
A	532.87 R 1382.94	DEL	22°04'38" LT
B9303	B9302	107.23	269°47'37"
B9302	B1	C 528.49	349°39'54"
A	531.33 R 1482.94	DEL	20°31'44" RT

MINNESOTA DEPARTMENT OF TRANSPORTATION  
RIGHT OF WAY PLAT NO. 31-94  
CONTROL SECTION NO. 3108(38=196)904  
IN THE WEST HALF OF THE SOUTHEAST QUARTER OF SECTION 36, T. 57 N., R. 26  
ITASCA COUNTY, MINNESOTA

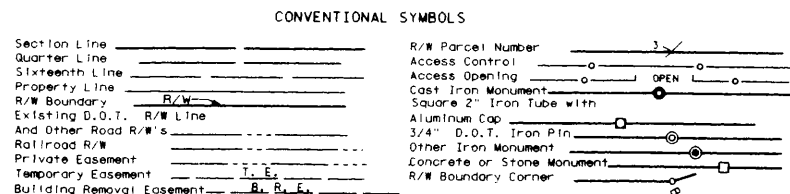
Doc. NO. 550918



RIGHT OF WAY IN SECTION 36 C.S. 3108(38=196)904

PARCEL	OWNER	LOCATION	NEW	TEMPORARY	TEMPORARY	PERMANENT
			T.H. R/W	EASEMENT	EASEMENT	R/W
			ACRES (MORE OR LESS)		EXPIRES ON	INTEREST
40	CLAIRE WOLTHOFF	SW1/4SE1/4	0.47			FEE
41	CHARLENE E. LINDSEY	SW1/4SE1/4	2.53			FEE
42	DAVID HALEY	W1/2 SE1/4	0.23			FEE
43	DANIEL JENSEN	NW1/4SE1/4	0.30			FEE
44	DARYL D. REINEN	NW1/4SE1/4	1.34			FEE
45	STEPHANIE E.W. RICHARDSON	NW1/4SE1/4	1.22			FEE

NOTE: TEMPORARY EASEMENTS IN PUBLIC ROADS WILL EXPIRE ON 12-01-2007.



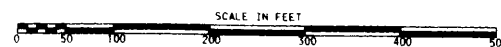
DISTANCES SHOWN TO FEET ( 66, 80 ETC. ) ARE EXACT VALUES.

SURVEY STANDARDS

- The plat values, azimuths, and distances are based on the county coordinate system.
- The boundary monuments shown on this plat have been field checked for location. The standard deviation for the monument position is 0.10 foot.
- The county coordinates shown on one monument are based on files to national control monuments.
- For details of this survey contact the Surveying Section at the Minnesota Department of Transportation.

DULUTH  
Name of District

AZIMUTH ORIENTATION AND GRID CONVERSION  
Plat azimuths are oriented to the County Coordinate System with 0 degrees 0 minutes 0 seconds being "GRID NORTH". Plat distances are ground lengths.



CAPPED IRON PIPE AT  
CORNER  
ITASCA COUNTY SOUTH ZONE  
COUNTY COORDINATES  
X = 58248.25  
Y = 28249.25  
MAD 83(1996) HARN

DOC. NO.  
OFFICE OF COUNTY RECORDER  
ITASCA COUNTY, MINN.  
I HEREBY CERTIFY THAT THIS PLAT  
HAS BEEN FILED IN THIS OFFICE  
ON \_\_\_\_\_, 20\_\_ AT \_\_\_\_\_ M  
IN CAB. \_\_\_\_\_ NO. \_\_\_\_\_

PLAT NO. 31-94  
C.S. 3108(38=196)904

COUNTY RECORDER

OFFICE OF THE COUNTY RECORDER  
ITASCA COUNTY, MINNESOTA

Doc. No. **A 550918**

Certified filed and recorded on  
01/13/2003 at 1:15 pm

Jean E. Bergison, Itasca County Recorder  
by   N  , Deputy

