

THE COMMISSIONER OF TRANSPORTATION IS HEREBY DESIGNATING THE DEFINITE LOCATION OF TRUNK HIGHWAY NO. 6 FROM 0.5 MILE SOUTH OF THE NORTH JUNCTION OF COUNTY STATE AID HIGHWAY 14 TO THE NORTH JUNCTION OF TRUNK HIGHWAY NO. 1

as shown on this plat prepared by the State of Minnesota Department of Transportation is hereby certified as the official plat of that portion of said T.H. 6 within the designated portions of Sections 27, 34 and 12 and the Commissioner's Order therefor, pursuant to Minnesota Statutes, section 160.065, section 160.14 subd. 1, section 161.16 subd. 2, and section 161.18.

It is further ordered that it is necessary to acquire all trees, shrubs, grass and herbage within the right of way of said Trunk Highway, and to keep and have the exclusive control of the same.

Commissioner's Order No. 86674 Location PLAT 31-105 Nature of Interest Definite location, width, access, temporary easement and building removal easement.

Certified by Douglas J. Belzhaar Acting Commissioner of Transportation Date 11/4/2002 by Allan E. Pirt Director, Office of Land Management

I hereby certify that this plat was prepared by me or under my direct supervision and that I am a duly Licensed Land Surveyor under the Laws of the State of Minnesota; that this plat meets requirements of Minnesota Statutes, section 160.065, section 160.14 subd. 1, section 161.16 subd. 2, and section 161.18; that parcel ownerships are correctly described and delineated on the plat; and that the proposed right-of-way boundary lines are correctly designated on the plat.

Certified by David K. Rohrer License No. 12042 Date 11-4-2002 Licensed Land Surveyor Office of Land Management

I hereby certify that this plat was surveyed by me or under my direct supervision and that I am a duly Licensed Land Surveyor under the Laws of the State of Minnesota; that all measurements are correctly shown on this plat; that all monuments have been correctly placed as shown on this plat; and that certificates of location for the monumented public land survey corners as shown on this plat are on file in the County Recorder's Office.

Certified by David G. Brown License No. 23037 Date 12/9/2002 Licensed Land Surveyor Mn/DOT District Office

SE1/4 - SE1/4

NE1/4 - SE1/4

SE1/4 - NE1/4

NE1/4 - NE1/4

FOR BALANCE OF PAR. 209 SEE PLATS 31-101 THRU 31-104 & 31-108

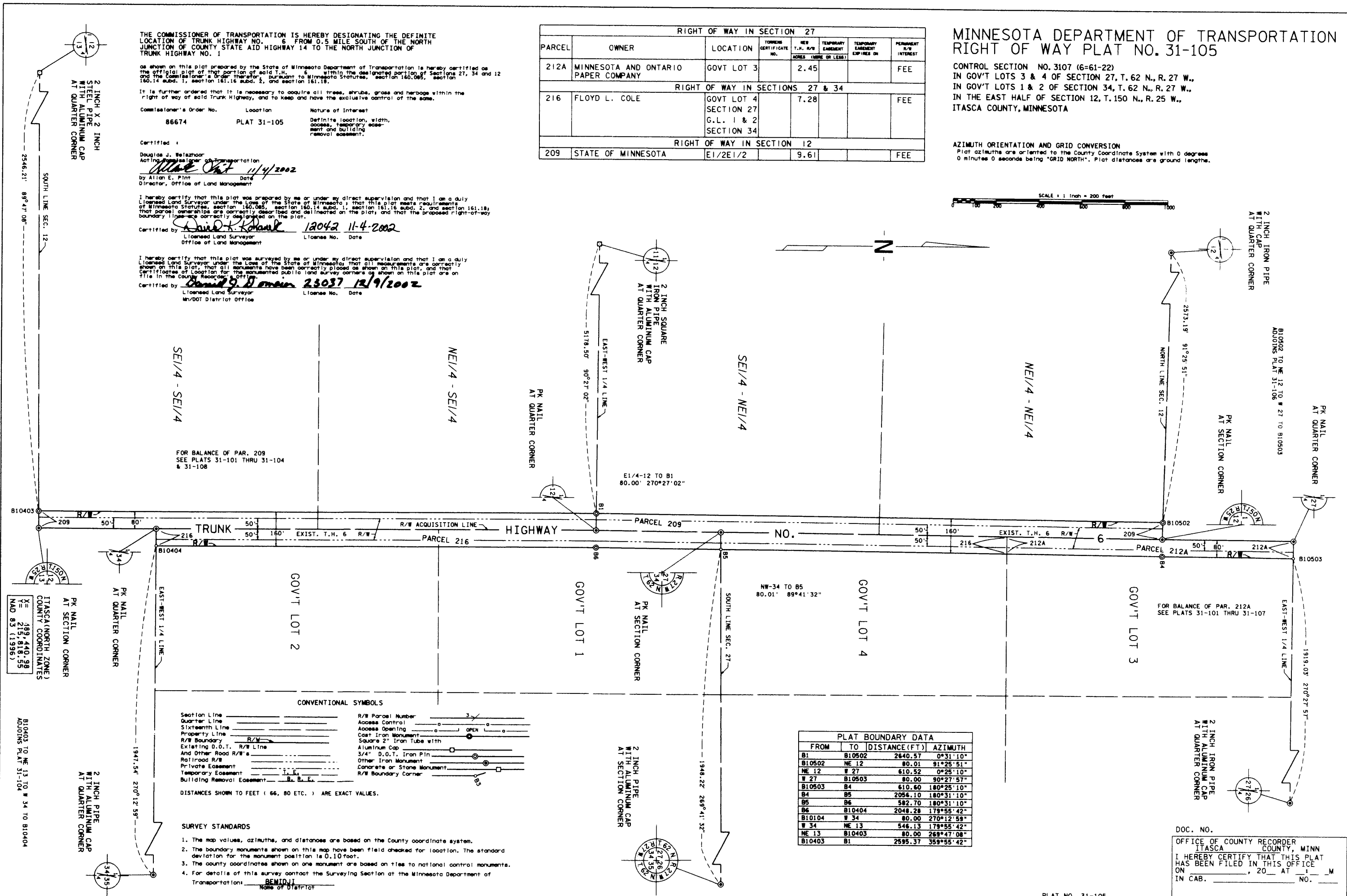
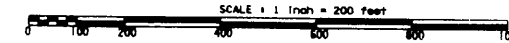
FOR BALANCE OF PAR. 212A SEE PLATS 31-101 THRU 31-107

RIGHT OF WAY IN SECTION 27						
PARCEL	OWNER	LOCATION	TOWNSHIP CERTIFICATE NO.	NET T.H. R/W ACRES (MORE OR LESS)	TEMPORARY EASEMENT EXPIRES ON	PERMANENT R/W INTEREST
212A	MINNESOTA AND ONTARIO PAPER COMPANY	GOVT LOT 3		2.45		FEE
RIGHT OF WAY IN SECTIONS 27 & 34						
216	FLOYD L. COLE	GOVT LOT 4 SECTION 27 G.L. 1 & 2 SECTION 34		7.28		FEE
RIGHT OF WAY IN SECTION 12						
209	STATE OF MINNESOTA	E1/2E1/2		9.61		FEE

MINNESOTA DEPARTMENT OF TRANSPORTATION RIGHT OF WAY PLAT NO. 31-105

CONTROL SECTION NO. 3107 (6-61-22)
IN GOV'T LOTS 3 & 4 OF SECTION 27, T. 62 N., R. 27 W.,
IN GOV'T LOTS 1 & 2 OF SECTION 34, T. 62 N., R. 27 W.,
IN THE EAST HALF OF SECTION 12, T. 150 N., R. 25 W.,
ITASCA COUNTY, MINNESOTA

AZIMUTH ORIENTATION AND GRID CONVERSION
Plat azimuths are oriented to the County Coordinate System with 0 degrees 0 minutes 0 seconds being "GRID NORTH". Plat distances are ground lengths.



ITASCA (NORTH ZONE) COUNTY COORDINATES
NAD 83 (1983)
X = 189,440.98
Y = 255,818.55

CONVENTIONAL SYMBOLS

Section Line	Section Line	R/W Parcel Number	3
Quarter Line	Quarter Line	Access Control	○
Sixteenth Line	Sixteenth Line	Access Opening	○
Property Line	Property Line	Cast Iron Monument	○
R/W Boundary	R/W Boundary	Square 2" Iron Tube with Aluminum Cap	○
Existing D.O.T. R/W Line and Other Road R/W's	Existing D.O.T. R/W Line and Other Road R/W's	3/4" D.O.T. Iron Pin	○
Railroad R/W	Railroad R/W	Other Iron Monument	○
Private Easement	Private Easement	Concrete or Stone Monument	○
Temporary Easement	Temporary Easement	R/W Boundary Corner	○
Building Removal Easement	Building Removal Easement		

DISTANCES SHOWN TO FEET (66, 80 ETC.) ARE EXACT VALUES.

- SURVEY STANDARDS
- The map values, azimuths, and distances are based on the County coordinate system.
 - The boundary monuments shown on this map have been field checked for location. The standard deviation for the monument position is 0.10 foot.
 - The county coordinates shown on one monument are based on ties to national control monuments.
 - For details of this survey contact the Surveying Section at the Minnesota Department of Transportation: BEMIDJI Name of District

PLAT BOUNDARY DATA

FROM	TO	DISTANCE (FT)	AZIMUTH
B1	B10502	2640.57	0°31'10"
B10502	NE 12	80.01	91°25'51"
NE 12	W 27	610.52	0°25'10"
W 27	B10503	80.00	90°27'57"
B10503	B4	610.60	180°25'10"
B4	B5	2056.10	180°31'10"
B5	B6	582.70	180°31'10"
B6	B10404	2048.28	178°55'42"
B10404	W 34	80.00	270°12'58"
W 34	NE 13	546.13	178°55'42"
NE 13	B10403	80.00	268°47'08"
B10403	B1	2595.37	359°55'42"

DOC. NO. _____
OFFICE OF COUNTY RECORDER
ITASCA COUNTY, MINN
I HEREBY CERTIFY THAT THIS PLAT
HAS BEEN FILED IN THIS OFFICE
ON _____, 20__ AT _____ M
IN CAB. _____ NO. _____
COUNTY RECORDER

OFFICE OF THE COUNTY RECORDER
ITASCA COUNTY, MINNESOTA

Doc. No. **A 549923**

Certified filed and recorded on
12/19/2002 at 9:00 am

Jean E. Bengtson, Itasca County Recorder
by N, Deputy

549923

b

