

THE COMMISSIONER OF TRANSPORTATION IS HEREBY DESIGNATING THE DEFINITE LOCATION OF TRUNK HIGHWAY NO. 6 FROM 0.5 MILE SOUTH OF THE NORTH JUNCTION OF COUNTY STATE AID HIGHWAY 14 TO THE NORTH JUNCTION OF TRUNK HIGHWAY NO. 1.

As shown on this plat prepared by the State of Minnesota Department of Transportation is hereby certified as the official plat of that portion of said T.H. 6 within the designated portion of Sections 10 and 15 and the Commissioner's Order therefor pursuant to Minnesota Statutes, section 160.085, section 160.14 subd. 1, section 161.16 subd. 2, and section 161.18.

It is further ordered that it is necessary to acquire all trees, shrubs, grass and herbage within the right of way of said Trunk Highway, and to keep and have the exclusive control of the same.

Commissioner's Order No. 86677 Location PLAT 31-108 Nature of Interest Definite location, width, access, temporary easement and building removal easement.

Certified by Douglas J. Belzhan Acting Commissioner of Transportation 11/4/2002 by Allan E. Pirt Date 11/4/2002 Director, Office of Land Management

I hereby certify that this plat was prepared by me or under my direct supervision and that I am a duly Licensed Land Surveyor under the Laws of the State of Minnesota; that all measurements are correctly shown on this plat; that all monuments have been correctly placed as shown on this plat; and that Certificates of Location for the easements shown on this plat are on file in the County Recorder's Office.

Certified by David K. Kowalek License No. 12042 Date 11-4-2002 Office of Land Management

I hereby certify that this plat was surveyed by me or under my direct supervision and that I am a duly Licensed Land Surveyor under the Laws of the State of Minnesota; that all measurements are correctly shown on this plat; that all monuments have been correctly placed as shown on this plat; and that Certificates of Location for the easements shown on this plat are on file in the County Recorder's Office.

Certified by David G. Damm License No. 23037 Date 12/9/2002 Mv/DT District Office

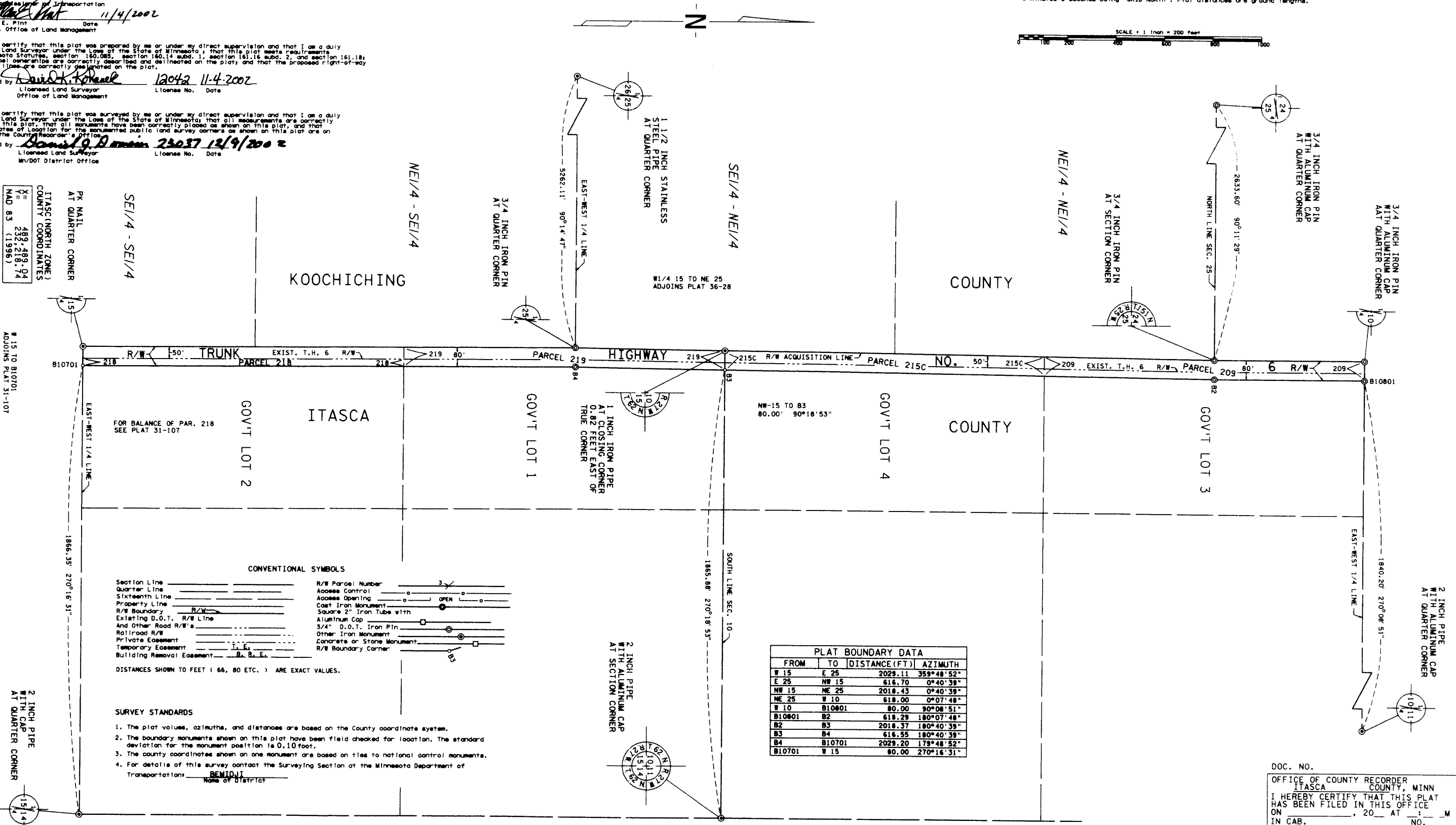
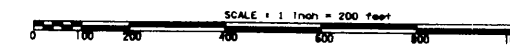
PR NAIL AT QUARTER CORNER
ITASCA (NORTH ZONE)
COUNTY COORDINATES
X = 499,489.94
Y = 232,218.74
NAD 83 (1986)

RIGHT OF WAY IN SECTION 10							
PARCEL	OWNER	LOCATION	TOWNSHIP CERTIFICATE NO.	NET T.H. R/W ACRES (MORE OR LESS)	TEMPORARY EASEMENT EXPIRES ON	PERMANENT R/W INTEREST	
209	STATE OF MINNESOTA (DNR)	GOVT LOT 3		2.42		FEE	
215C	STATE OF MINNESOTA	GOVT LOT 4		2.42		FEE	
RIGHT OF WAY IN SECTION 15							
218	DELVIN T. PITZEN	GOVT LOT 2		0.91		FEE	
219	JAMES E. LOVE	GOVT LOT 1		2.43		FEE	

MINNESOTA DEPARTMENT OF TRANSPORTATION RIGHT OF WAY PLAT NO. 31-108

CONTROL SECTION NO. 3107 (6-61-22)
IN GOV'T LOTS 3 & 4 OF SECTION 10, T. 62 N., R. 27 W.,
IN GOV'T LOTS 1 & 2 OF SECTION 15, T. 62 N., R. 27 W.,
ITASCA COUNTY, MINNESOTA

AZIMUTH ORIENTATION AND GRID CONVERSION
Plat azimuths are oriented to the County Coordinate System with 0 degree 0 minutes 0 seconds being "GRID NORTH". Plat distances are ground lengths.



CONVENTIONAL SYMBOLS

Section Line	_____	R/W Parcel Number	3
Quarter Line	_____	Access Control	○
Sixteenth Line	_____	Access Opening	○
Property Line	_____	Cast Iron Monument	●
R/W Boundary	_____	Square 2" Iron Tube with Aluminum Cap	□
Existing D.O.T. R/W Line	_____	3/4" D.O.T. Iron Pin	○
And Other Road R/W's	_____	Other Iron Monument	○
Railroad R/W	_____	Concrete or Stone Monument	□
Private Easement	_____	R/W Boundary Corner	○
Temporary Easement	_____		
Building Removal Easement	_____		

DISTANCES SHOWN TO FEET (66, 80 ETC.) ARE EXACT VALUES.

PLAT BOUNDARY DATA

FROM	TO	DISTANCE (FT)	AZIMUTH
W 15	E 25	2029.11	359°48'52"
E 25	NW 15	616.70	0°40'39"
NW 15	NE 25	2018.43	0°40'39"
NE 25	W 10	618.00	0°07'48"
W 10	B10801	80.00	90°08'51"
B10801	B2	618.29	180°07'48"
B2	B3	2018.37	180°40'39"
B3	B4	616.55	180°40'39"
B4	B10701	2029.20	179°48'52"
B10701	W 15	80.00	270°16'31"

SURVEY STANDARDS

- The plat values, azimuths, and distances are based on the County coordinate system.
- The boundary monuments shown on this plat have been field checked for location. The standard deviation for the monument position is 0.10 foot.
- The county coordinates shown on one monument are based on ties to national control monuments.
- For details of this survey contact the Surveying Section at the Minnesota Department of Transportation. REMI DJI Name of District

DOC. NO. _____
OFFICE OF COUNTY RECORDER
ITASCA COUNTY, MINN
I HEREBY CERTIFY THAT THIS PLAT
HAS BEEN FILED IN THIS OFFICE
ON _____, 20__ AT _____ M
IN CAB. _____ NO. _____
COUNTY RECORDER

OFFICE OF THE COUNTY RECORDER
ITASCA COUNTY, MINNESOTA



Doc. No. **A 549926**

Certified filed and recorded on
12/19/2002 at 9:30 am

Jean E. Bengtson, Itasca County Recorder
by CV, Deputy

6