

THE COMMISSIONER OF TRANSPORTATION IS HEREBY DESIGNATING THE DEFINITE LOCATION OF TRUNK HIGHWAY NO. 6 FROM 0.5 MILE SOUTH OF THE NORTH JUNCTION OF COUNTY STATE AID HIGHWAY 14 TO THE NORTH JUNCTION OF TRUNK HIGHWAY NO. 1

as shown on this plat prepared by the State of Minnesota Department of Transportation is hereby certified as the official plat of that portion of said T.H. 6 within the designated portion of Sections 3, 13 and 34 and the Commissioner's Order therefor pursuant to Minnesota Statutes, section 160.065, section 160.14 subd. 1, section 161.16 subd. 2, and section 161.18.

It is further ordered that it is necessary to acquire all trees, shrubs, grass and herbage within the right of way of said Trunk Highway, and to keep and have the exclusive control of the same.

Commissioner's Order No. 86673 Location PLAT 31-104 Nature of Interest Definite location, width, access, temporary easement and building removal easement.

Certified by Douglas J. Weiszhaar Acting Commissioner of Transportation 11/4/2002 by Allan E. Pirt Director, Office of Land Management

I hereby certify that this plat was prepared by me or under my direct supervision and that I am a duly Licensed Land Surveyor under the Laws of the State of Minnesota; that all measurements are correctly shown on this plat; that all monuments have been correctly placed as shown on this plat; and that the proposed right-of-way boundary lines are correctly delineated on the plat.

Certified by David K. Kormanik 12043 11-4-2002 Licensed Land Surveyor Office of Land Management

I hereby certify that this plat was surveyed by me or under my direct supervision and that I am a duly Licensed Land Surveyor under the Laws of the State of Minnesota; that all measurements are correctly shown on this plat; that all monuments have been correctly placed as shown on this plat; and that the proposed right-of-way boundary lines are correctly delineated on the plat.

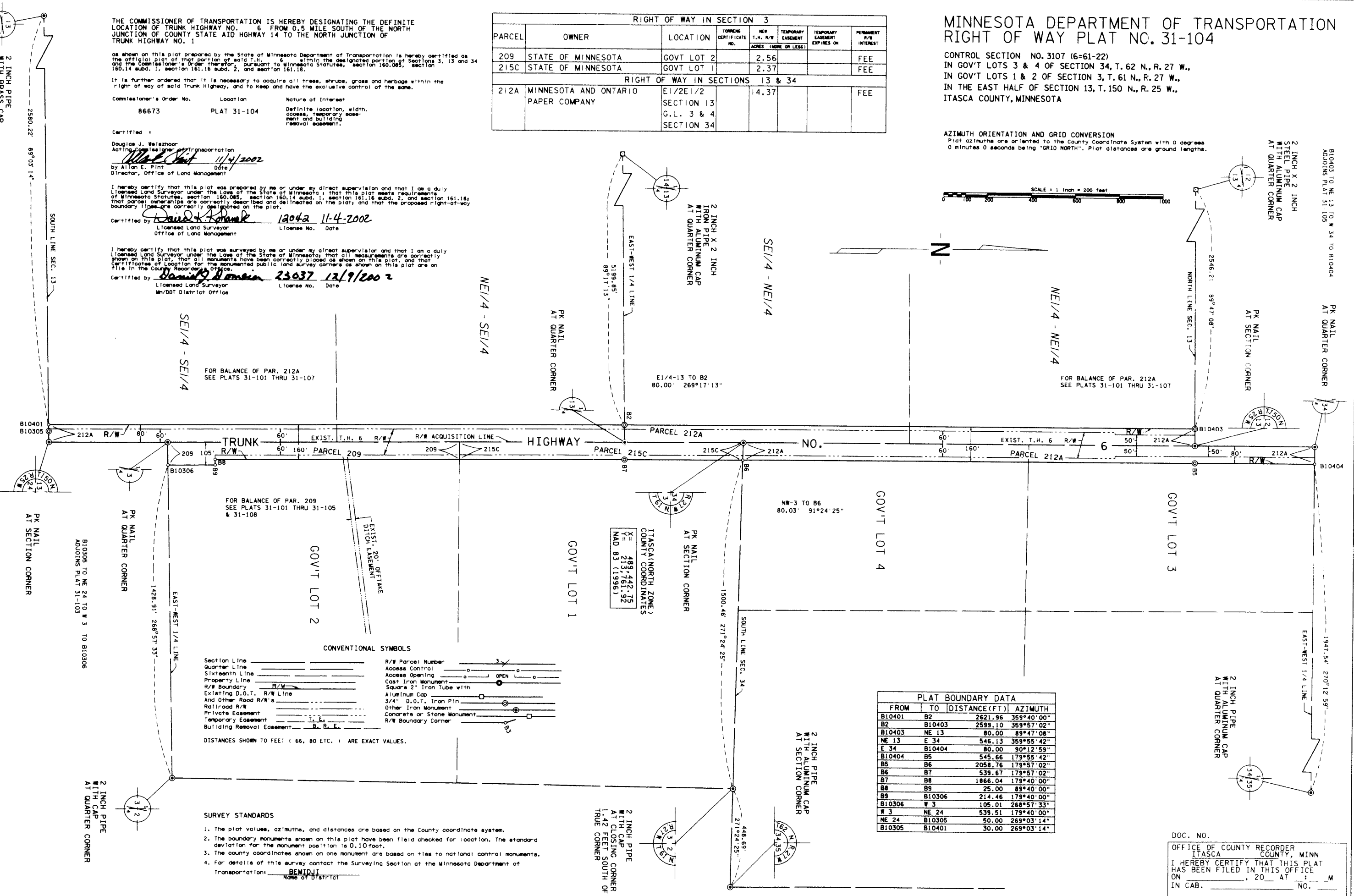
Certified by David R. Homen 23037 12/9/2002 Licensed Land Surveyor Min/DOT District Office

RIGHT OF WAY IN SECTION 3						
PARCEL	OWNER	LOCATION	TOWNSHIP CERTIFICATE NO.	NET T.H. R/W ACRES (MORE OR LESS)	TEMPORARY EASEMENT EXPIRES ON	PERMANENT R/W INTEREST
209	STATE OF MINNESOTA	GOVT LOT 2		2.56		FEE
215C	STATE OF MINNESOTA	GOVT LOT 1		2.37		FEE
RIGHT OF WAY IN SECTIONS 13 & 34						
212A	MINNESOTA AND ONTARIO PAPER COMPANY	E1/2E1/2 SECTION 13 G.L. 3 & 4 SECTION 34		14.37		FEE

MINNESOTA DEPARTMENT OF TRANSPORTATION RIGHT OF WAY PLAT NO. 31-104

CONTROL SECTION NO. 3107 (6-61-22)
IN GOV'T LOTS 3 & 4 OF SECTION 34, T. 62 N., R. 27 W.,
IN GOV'T LOTS 1 & 2 OF SECTION 3, T. 61 N., R. 27 W.,
IN THE EAST HALF OF SECTION 13, T. 150 N., R. 25 W.,
ITASCA COUNTY, MINNESOTA

AZIMUTH ORIENTATION AND GRID CONVERSION
Plat azimuths are oriented to the County Coordinate System with 0 degrees 0 minutes 0 seconds being "GRID NORTH". Plat distances are ground lengths.



CONVENTIONAL SYMBOLS

Section Line	—	R/W Parcel Number	3
Quarter Line	—	Access Control	○
Sixteenth Line	—	Access Opening	○
Property Line	—	Cast Iron Monument	○
R/W Boundary	—	Square 2" Iron Tube with Aluminum Cap	□
Existing D.O.T. R/W Line	—	3/4" D.O.T. Iron Pin	○
And Other Road R/W's	—	Other Iron Monument	○
Railroad R/W	—	Concrete or Stone Monument	○
Private Easement	—	R/W Boundary Corner	○
Temporary Easement	—		
Building Removal Easement	—		

DISTANCES SHOWN TO FEET (66, 80 ETC.) ARE EXACT VALUES.

- SURVEY STANDARDS
- The plat values, azimuths, and distances are based on the County coordinate system.
 - The boundary monuments shown on this plat have been field checked for location. The standard deviation for the monument position is 0.10 foot.
 - The county coordinates shown on one monument are based on ties to national control monuments.
 - For details of this survey contact the Surveying Section at the Minnesota Department of Transportation: BEMIDJI Name of District

PLAT BOUNDARY DATA

FROM	TO	DISTANCE (FT)	AZIMUTH
B10401	B2	2621.96	359°40'00"
B2	B10403	2599.10	359°57'02"
B10403	NE 13	80.00	89°47'08"
NE 13	E 34	546.13	359°55'42"
E 34	B10404	80.00	90°12'59"
B10404	B5	545.66	179°55'42"
B5	B6	2058.76	179°57'02"
B6	B7	539.67	179°57'02"
B7	B8	1866.04	179°40'00"
B8	B9	25.00	89°40'00"
B9	B10306	214.46	179°40'00"
B10306	W 3	105.01	268°57'33"
W 3	NE 24	539.51	179°40'00"
NE 24	B10305	50.00	269°03'14"
B10305	B10401	30.00	269°03'14"

DOC. NO. _____
OFFICE OF COUNTY RECORDER
ITASCA COUNTY, MINN
I HEREBY CERTIFY THAT THIS PLAT
HAS BEEN FILED IN THIS OFFICE
ON _____, 20__ AT _____ M
IN CAB. _____ NO. _____
COUNTY RECORDER

549922

8

OFFICE OF THE COUNTY RECORDER
ITASCA COUNTY, MINNESOTA

Doc. No. **A 549922**

Certified filed and recorded on

12/19/2002 at 8:40 am

Jean E. Bergston, Itasca County Recorder
by CV, Deputy

