

PARCEL	OWNER	LOCATION	TOWNSHIP CERTIFICATE NO.	NEW T.H. R/W		TEMPORARY EASEMENT		TEMPORARY EASEMENT EXPIRES ON	PERMANENT R/W INTEREST
				HECTARES (MORE OR LESS)	ACRES	HECTARES (MORE OR LESS)	ACRES		
71	UNITED STATES OF AMERICA	E1/2 NW1/4 E1/2 SW1/4 GOV'T LOT 1 NW1/4NW1/4	2252	2.555	6.31	0.321	0.79	12-01-01	EASE.

NOTE: TEMPORARY EASEMENTS IN PUBLIC ROADS WILL EXPIRE ON 12-01-2001.

**MINNESOTA DEPARTMENT OF TRANSPORTATION  
RIGHT OF WAY PLAT NO. 31-44\***

STATE PROJECT NO. 3108(38-196)901  
IN THE WEST HALF OF SECTION 20, T. 60 N., R. 26 W.,  
ITASCA COUNTY, MINNESOTA

**\*AMENDMENT TO: MINNESOTA DEPARTMENT OF TRANSPORTATION  
RIGHT OF WAY PLAT NO. 31-36  
PARCEL 71**

THE COMMISSIONER OF TRANSPORTATION IS HEREBY DESIGNATING THE DEFINITE LOCATION OF TRUNK HIGHWAY NO. 38 FROM JAYNES TO 2.0 MILES NORTH OF JAYNES

as shown on this plat prepared by the State of Minnesota Department of Transportation is hereby certified as the official plat of that portion of said T.H. 38 within the designated portion of Section 20 and the Commissioner's Order therefor, pursuant to Minnesota Statutes, section 160.085, section 160.14 subd. 1, section 161.16 subd. 2, and section 161.18.

Commissioner's Order No.	Location	Nature of Interest
82305	PLATS 31-44 THRU 31-45	Definite location, width, access, temporary easement and building removal easement.

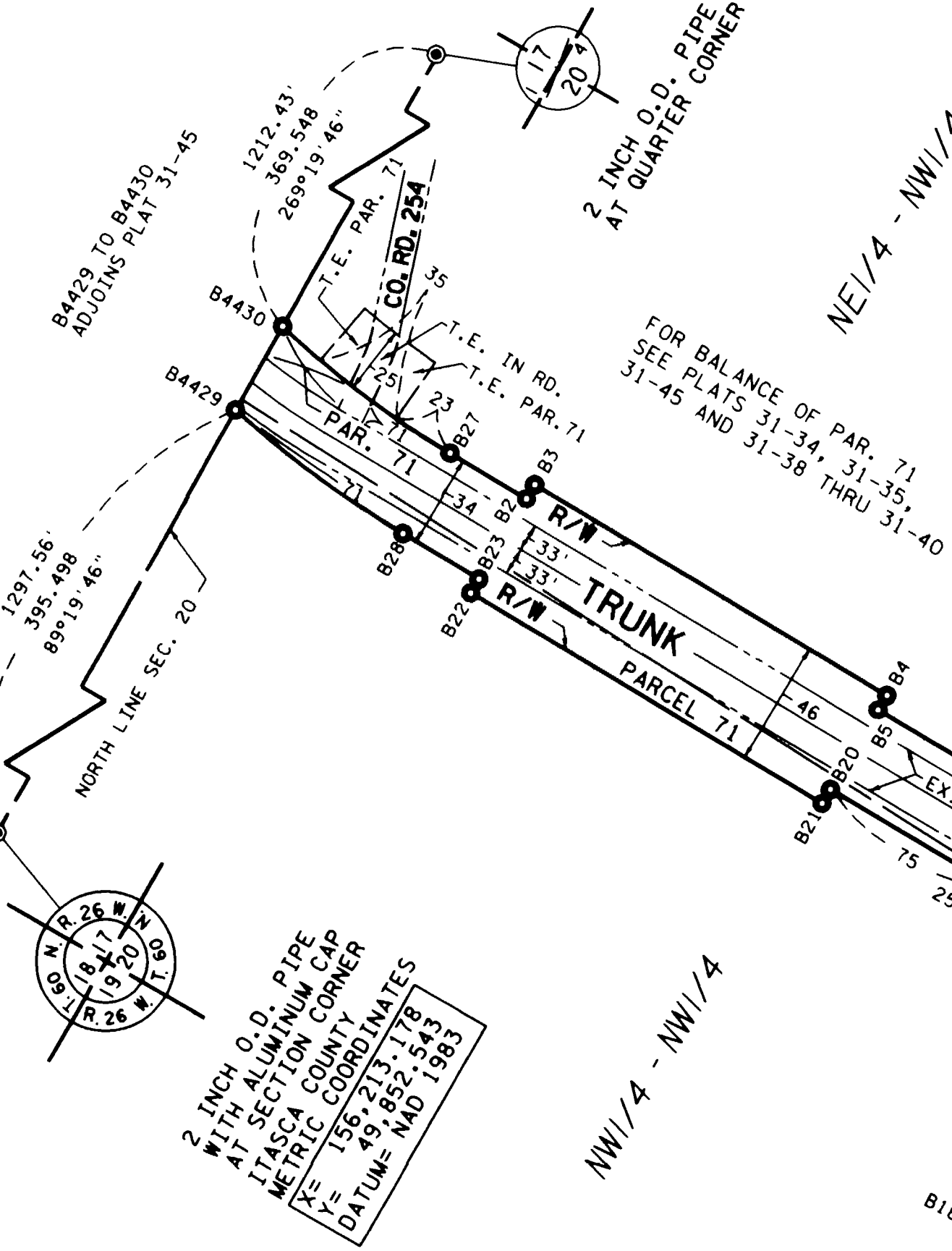
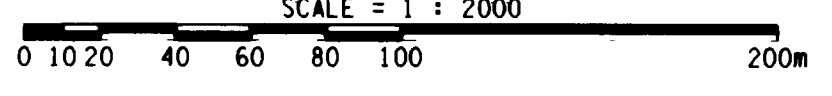
Certified by  
James N. Denn  
Commissioner of Transportation  
by *[Signature]* 3-14-97  
Date  
Director, Office of Land Management

I hereby certify that this plat was prepared by me or under my direct supervision and that I am a duly Registered Land Surveyor under the Laws of the State of Minnesota; that this plat meets requirements of Minnesota Statutes, section 160.085, section 160.14 subd. 1, section 161.16 subd. 2, and section 161.18; that parcel ownerships are correctly described and delineated on the plat; and that the proposed right-of-way boundary lines are correctly designated on the plat.

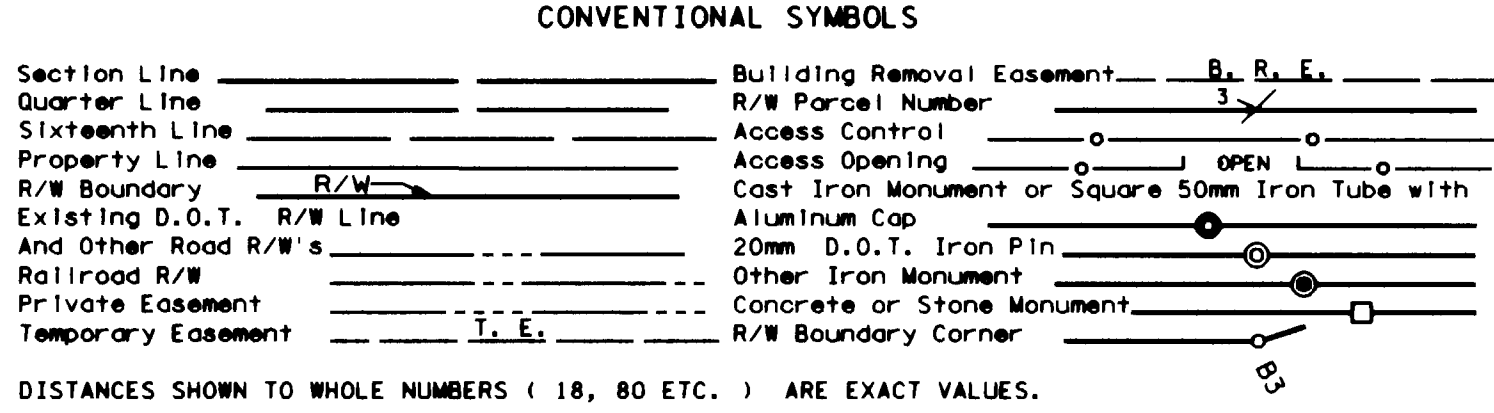
Certified by *[Signature]* 12042 3-14-97  
Registered Land Surveyor License No. Date  
Office of Land Management

I hereby certify that this plat was surveyed by me or under my direct supervision and that I am a duly Registered Land Surveyor under the Laws of the State of Minnesota; that all measurements are correctly shown on this plat; and that all monuments have been correctly placed as shown on this plat.

Certified by *[Signature]* 22375 2-18-97  
Registered Land Surveyor License No. Date  
MnDOT District Office



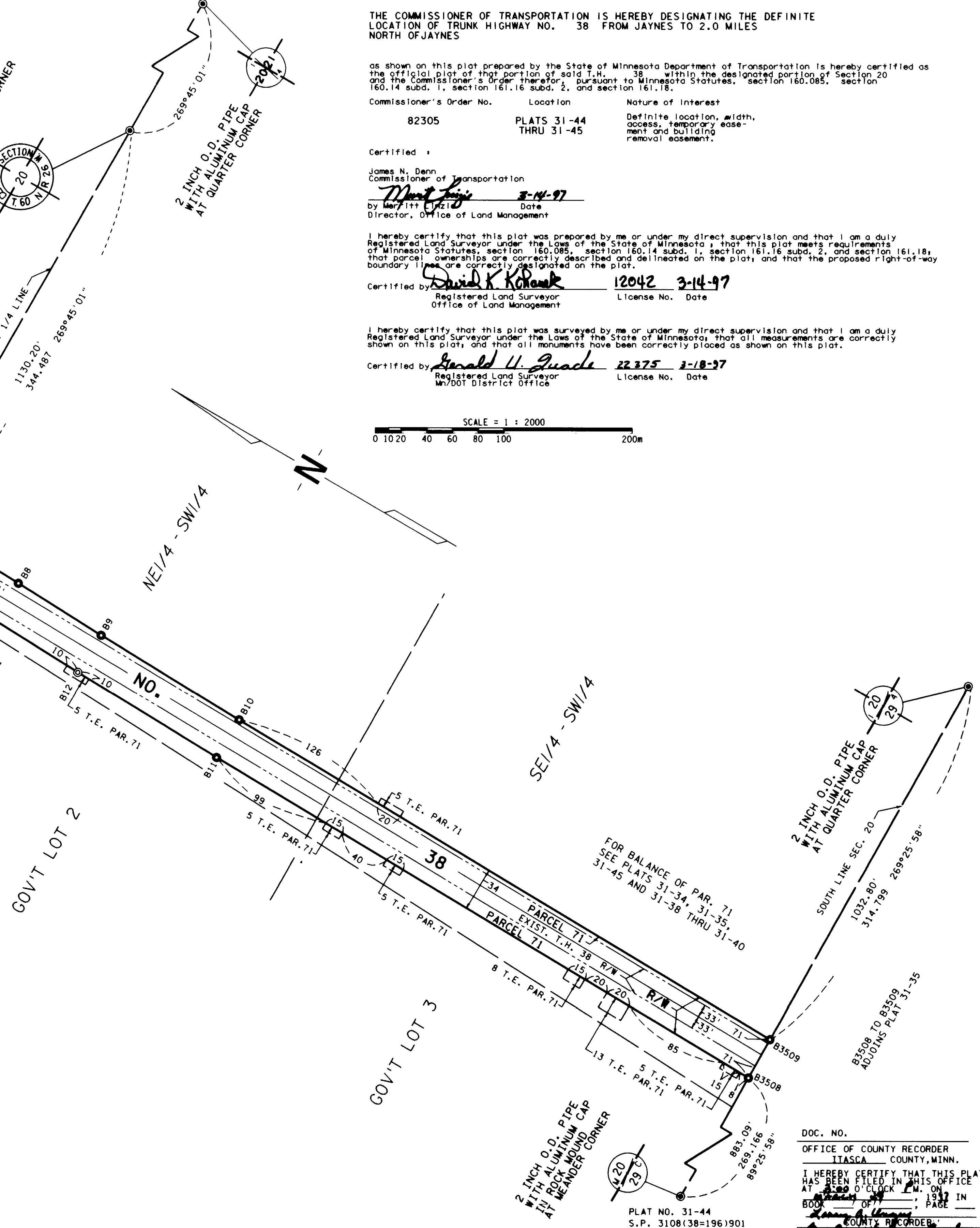
PLAT BOUNDARY DATA			
POINT	DISTANCE	FEET	METERS
B4430-B27	C	251.81'	76.753
	ARC	252.32'	76.907
	Δ		12°33'59"
	RADIUS	1150.45'	350.658
B27-B2		106.56'	32.480
B2-B3		19.68'	6.000
B3-B4		492.12'	150.000
B4-B5		19.68'	6.000
B5-B6		1651.22'	503.294
B6-B7		88.01'	26.827
B7-B8		326.37'	99.477
B8-B9		248.95'	75.881
B9-B10		412.36'	125.687
B10-B3509		1578.49'	481.126
B3509-B3508		111.58'	34.011
B3508-B11		1581.30'	481.981
B11-B12		414.40'	126.309
B12-B13		248.95'	75.879
B13-B14		322.15'	98.190
B14-B15		90.20'	27.493
B15-B16		1157.40'	352.777
B16-B17		359.82'	109.674
B17-B18		91.86'	28.000
B18-B19		361.96'	110.326
B19-B20		401.94'	122.511
B20-B21		19.68'	6.000
B21-B22		492.12'	150.000
B22-B23		19.68'	6.000
B23-B28		106.56'	32.480
B28-B4429	C	248.42'	75.718
	ARC	248.82'	75.840
	Δ		11°17'48"
	RADIUS	1262.00'	384.658
B4429-B4430		114.70'	34.960



- SURVEY STANDARDS**
- The plat values, azimuths, and distances are based on the project control survey system.
  - The boundary monuments shown on this plat have been field checked for location. The standard deviation for the monument position is 30 millimeters.
  - The county coordinates shown on one monument are based on ties to national control monuments.
  - Certificates of Location have been filed at the County Recorder's Office and/or the County Surveyor's Office for the section corner monuments shown on this plat.
  - For details of this survey contact the Surveying and Mapping Section at the Minnesota Department of Transportation  
DULUTH  
Name of District

**METRIC/ENGLISH CONVERSION**  
All plat distances are in meters unless denoted as feet (').  
To convert meters to (U.S. Survey) feet, multiply the meters by 3.28083333.  
To convert hectares to acres, multiply hectares by 2.471.  
To convert square meters to square feet, multiply the square meters by 10.764.

**AZIMUTH ORIENTATION**  
Plat azimuths are oriented to the County Coordinate System with 0 degrees 0 minutes 0 seconds being "GRID NORTH" and all distances are ground lengths.



DOC. NO.  
OFFICE OF COUNTY RECORDER  
ITASCA COUNTY, MINN.  
I HEREBY CERTIFY THAT THIS PLAT  
HAS BEEN FILED IN THIS OFFICE  
AT 1:00 O'CLOCK P.M. ON  
BOOK OF \_\_\_\_\_ PAGE  
COUNTY RECORDER