

PLAT BOUNDARY DATA			
POINT	DISTANCE		AZIMUTH
	FEET	METERS	
B3715-B1	2435.37'	742.301	174°43'09"
B1-B2	C 501.06'	152.723	168°17'10"
ARC	502.12'	153.045	
Δ			12°51'58"
RADIUS	2236.06'	681.551	
B2-B16	1262.40'	384.780	161°51'11"
B16-B17	C 605.57'	184.578	175°44'06"
ARC	611.53'	186.396	
Δ			27°45'51"
RADIUS	1262.00'	384.658	
B17-B18	13.12'	4.000	99°37'02"
B18-B19	C 102.29'	31.177	191°54'57"
ARC	102.31'	31.185	
Δ			4°35'50"
RADIUS	1275.12'	388.658	
B19-B20	13.12'	4.000	284°12'52"
B20-B21	352.39'	107.410	194°12'52"
B21-B4430	C 15.56'	4.744	193°49'37"
ARC	15.56'	4.744	
Δ			0°46'31"
RADIUS	1150.45'	350.658	
B4430-B4429	114.70'	34.960	269°19'46"
B4429-B22	C 45.04'	13.727	13°11'32"
ARC	45.04'	13.728	
Δ			2°02'41"
RADIUS	1262.00'	384.658	
B22-B23	203.12'	61.910	14°12'52"
B23-B24	6.56'	2.000	284°12'52"
B24-B25	149.28'	45.500	14°12'52"
B25-B26	C 76.21'	23.230	12°18'19"
ARC	76.23'	23.234	
Δ			3°49'05"
RADIUS	1143.89'	348.658	
B26-B27	6.56'	2.000	100°23'47"
B27-B28	C 567.22'	172.888	356°07'29"
ARC	573.13'	174.689	
Δ			28°32'36"
RADIUS	1150.45'	350.658	
B28-B12	1262.40'	384.780	341°51'11"
B12-B13	C 526.06'	160.342	349°17'10"
ARC	527.16'	160.680	
Δ			12°51'58"
RADIUS	2347.60'	715.551	
B13-B3714	2444.14'	744.976	354°43'09"
B3714-B3715	111.89'	34.105	89°13'01"

MINNESOTA DEPARTMENT OF TRANSPORTATION  
RIGHT OF WAY PLAT NO. 31-45\*

STATE PROJECT NO. 3108(38)=1961901  
IN THE WEST HALF OF SECTION 17, T. 60 N., R. 26 W.,  
ITASCA COUNTY, MINNESOTA

\*AMENDMENT TO: MINNESOTA DEPARTMENT OF TRANSPORTATION  
RIGHT OF WAY PLAT NO. 31-37  
PARCEL 71

THE COMMISSIONER OF TRANSPORTATION IS HEREBY DESIGNATING THE DEFINITE LOCATION OF TRUNK HIGHWAY NO. 38 FROM JAYNES TO 2.0 MILES NORTH OF JAYNES

as shown on this plat prepared by the State of Minnesota Department of Transportation is hereby certified as the official plat of that portion of said T.H. No. 38 within the designated portion of Section 17 and the Commissioner's Order therefor, pursuant to Minnesota Statutes, section 160.085, section 160.14 subd. 1, section 161.16 subd. 2, and section 161.18.

Commissioner's Order No.	Location	Nature of Interest
82305	PLATS 31-44 THRU 31-45	Definite location, width, access, temporary easement and building removal easement.

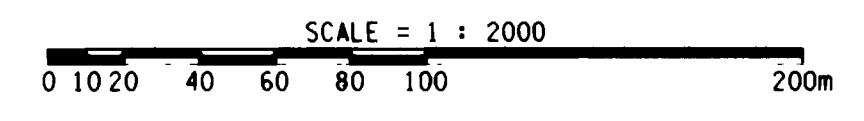
Certified by  
James N. Dann  
Commissioner of Transportation  
*James N. Dann* 3-14-97  
Date  
Director, Office of Land Management

I hereby certify that this plat was prepared by me or under my direct supervision and that I am a duly Registered Land Surveyor under the Laws of the State of Minnesota and that this plat meets requirements of Minnesota Statutes, section 160.085, section 160.14 subd. 1, section 161.16 subd. 2, and section 161.18; that parcel ownerships are correctly described and delineated on the plat; and that the proposed right-of-way boundary lines are correctly delineated on the plat.

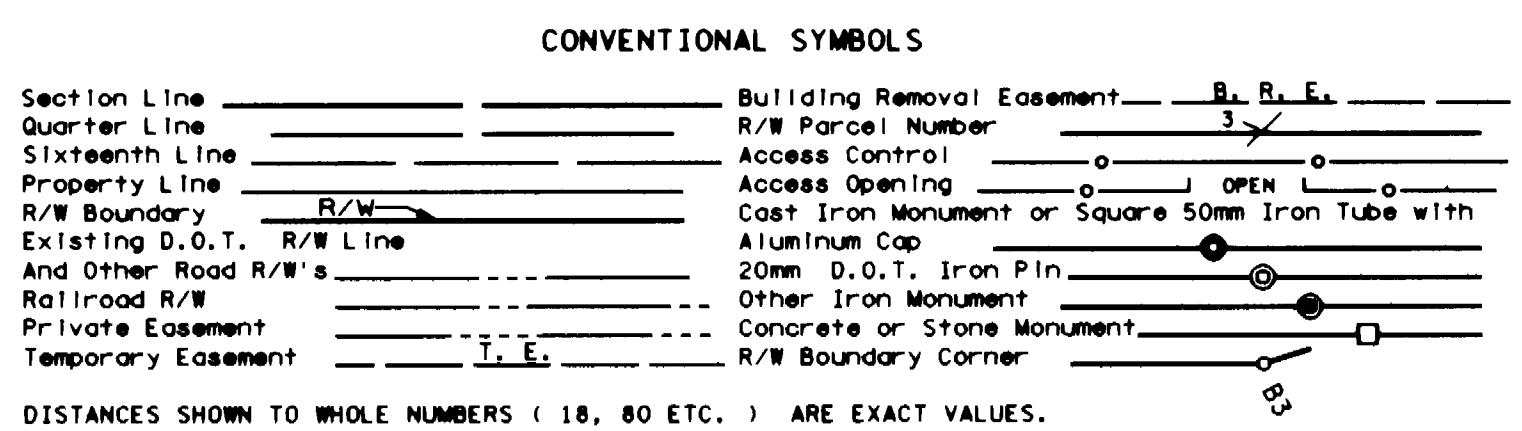
Certified by *David K. Korowak* 12042 3-14-97  
Registered Land Surveyor License No. Date  
Office of Land Management

I hereby certify that this plat was surveyed by me or under my direct supervision and that I am a duly Registered Land Surveyor under the Laws of the State of Minnesota and that all measurements are correctly shown on this plat; and that all monuments have been correctly placed as shown on this plat.

Certified by *Arnold U. Juande* 22375 3-18-27  
Registered Land Surveyor License No. Date  
MnDOT District Office



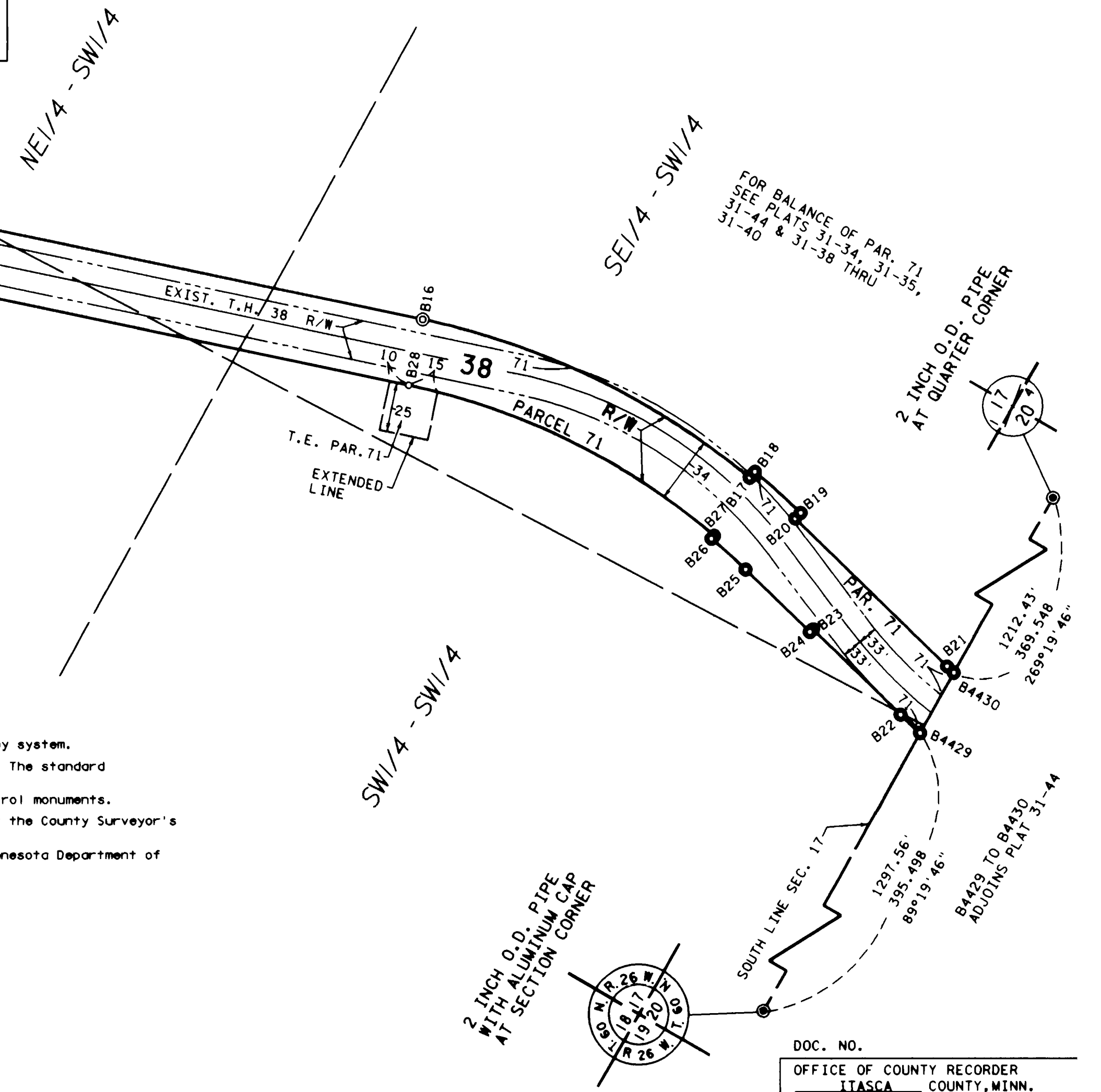
RIGHT OF WAY IN SECTION 17								
PARCEL	OWNER	LOCATION	TOWNSHIP CERTIFICATE NO.	NEW T.H. R/W		TEMPORARY EASEMENT		PERMANENT R/W INTEREST
				HECTARES	ACRES	HECTARES	ACRES	
71	UNITED STATES OF AMERICA	W1/2 NW1/4 SW1/4	2252	2.273	5.62	0.161	0.40	12-01-01 EASE.



**METRIC/ENGLISH CONVERSION**  
All plat distances are in meters unless denoted as feet (').  
To convert meters to (U.S. Survey) feet, multiply the meters by 3.28083333.  
To convert hectares to acres, multiply hectares by 2.471.  
To convert square meters to square feet, multiply the square meters by 10.764.

- SURVEY STANDARDS**
- The plat values, azimuths, and distances are based on the project control survey system.
  - The boundary monuments shown on this plat have been field checked for location. The standard deviation for the monument position is 30 millimeters.
  - The county coordinates shown on one monument are based on ties to national control monuments.
  - Certificates of Location have been filed at the County Recorder's Office and/or the County Surveyor's Office for the section corner monuments shown on this plat.
  - For details of this survey contact the Surveying and Mapping Section at the Minnesota Department of Transportation, DULUTH, Name of District

**AZIMUTH ORIENTATION**  
Plat azimuths are oriented to the County Coordinate System with 0 degrees 0 minutes 0 seconds being "GRID NORTH" and all distances are ground lengths.



PLAT NO. 31-45  
I.P. 3108(38)=1961901

DOC. NO.  
OFFICE OF COUNTY RECORDER  
ITASCA COUNTY, MINN.  
I HEREBY CERTIFY THAT THIS PLAT HAS BEEN FILED IN THIS OFFICE AT 1:12 O'CLOCK P.M. ON 3/14/97 IN BOOK 192 IN PAGE 134  
COUNTY RECORDER

200 #479894  
SL106 0323