

THE COMMISSIONER OF TRANSPORTATION IS HEREBY DESIGNATING THE DEFINITE LOCATION OF TRUNK HIGHWAY NO. 38 FROM THE JUNCTION OF COUNTY STATE AID HIGHWAY 49 TO THE JUNCTION OF COUNTY STATE AID HIGHWAY NO. 19

as shown on this plat prepared by the State of Minnesota Department of Transportation is hereby certified as the official plat of that portion of said T.H. 38 within the designated portion of Section 1 and the Commissioner's Order therefor, pursuant to Minnesota Statutes, section 160.085, section 160.14 subd. 1, section 161.16 subd. 2, and section 161.18.

It is further ordered that it is necessary to acquire all trees, shrubs, grass and herbage within the right of way of said Trunk Highway, and to keep and have the exclusive control of the same.

Commissioner's Order No.	Location	Nature of Interest
86746	PLAT 31-93	Definite location, width, access, temporary and permanent easement.

Certified by Douglas J. Weiszhaar, Acting Commissioner of Transportation, by ALLAN E. PINT, Director, Office of Land Management, Date 01/02/03

I hereby certify that this plat was surveyed and prepared by me or under my direct supervision and that I am a duly Licensed Land Surveyor under the Laws of the State of Minnesota, that all measurements are correctly shown on this plat, that all monuments have been correctly placed as shown on this plat, that certificates of location for the monumented public land survey corners as shown on this plat are on file in the County Recorder's Office, that this plat meets requirements of Minnesota Statutes, section 160.085, section 160.14 subd. 1, section 161.16 subd. 2, and section 161.18, that parcel ownerships are correctly described and that the proposed right-of-way boundary lines are correctly designated on the plat.

Certified by Bruce Yandura, Licensed Land Surveyor, License No. 21107, Date 12-20-2002, Mn/DOT District Office

PLAT BOUNDARY DATA				
FROM	TO	DISTANCE (FT.)	AZIMUTH	
B1	B9302	C 205.91	335°25'10"	
A	206.08	R 1482.94	DEL 7°57'44" RT	
B9302	B9303	107.23	89°47'37"	
B9303	B4	C 154.73	154°38'43"	
A	154.81	R 1382.94	DEL 6°24'50" LT	
B4	B9202	1384.32	151°26'18"	
B9202	B9201	211.60	179°38'25"	
B9201	B1	1570.80	331°26'18"	

MINNESOTA DEPARTMENT OF TRANSPORTATION
RIGHT OF WAY PLAT NO. 31-93
CONTROL SECTION NO. 3108(38=196)904
IN GOVERNMENT LOT 2 OF SECTION 1, T. 56 N., R. 26 W.
ITASCA COUNTY, MINNESOTA

DOC NO 550917

RIGHT OF WAY IN SECTION 1 C.S. 3108(38=196)904						
PARCEL	OWNER	LOCATION	NEW	TEMPORARY	TEMPORARY	PERMANENT
			T.M. R/W	EASEMENT	EASEMENT	R/W
			ACRES (MORE OR LESS)		EXPIRES ON	INTEREST
32	DAVID D. TRUDEL	GOV'T LCT 2	1.25			FEE
35	DONALD JAEGER	GOV'T LCT 2	2.55			FEE

NOTE: TEMPORARY EASEMENTS IN PUBLIC ROADS WILL EXPIRE ON 12-01-2007.

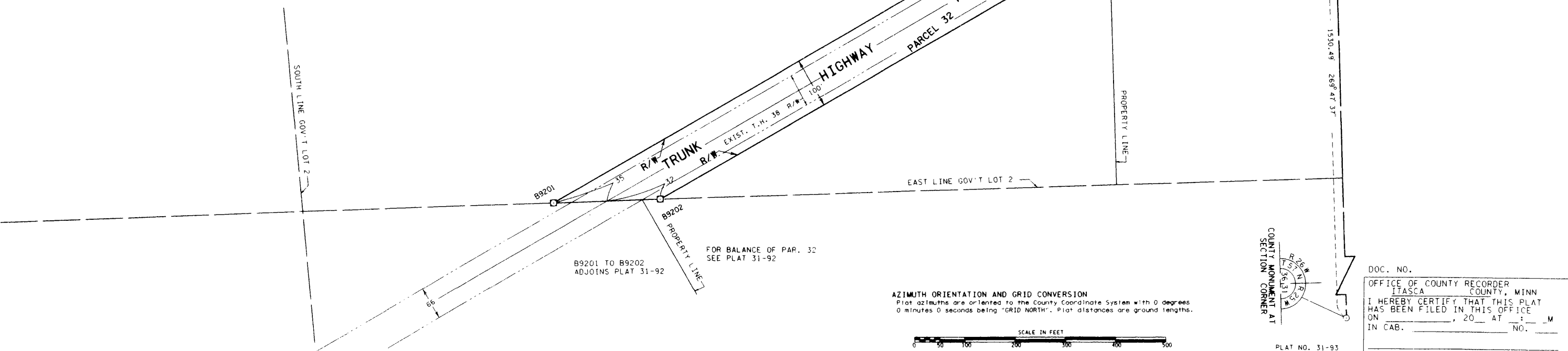
CONVENTIONAL SYMBOLS

Section Line	R/W Parcel Number
Quarter Line	Access Control
Sixteenth Line	Access Opening
Property Line	Cast Iron Monument
R/W Boundary	Square 2" Iron Tube with
Existing D.O.T. R/W Line	Aluminum Cap
and Other Road R/W's	3/4" D.O.T. Iron Pin
Railroad R/W	Other Iron Monument
Private Easement	Concrete or Stone Monument
Temporary Easement	R/W Boundary Corner
Building Removal Easement	

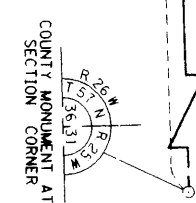
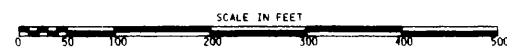
DISTANCES SHOWN TO FEET (66, 80 ETC.) ARE EXACT VALUES.

SURVEY STANDARDS

- The plat values, azimuths, and distances are based on the County coordinate system.
- The boundary monuments shown on this plat have been field checked for location. The standard deviation for the monument position is 0.10 foot.
- The county coordinates shown on one monument are based on ties to national control monuments.
- For details of this survey contact the Surveying Section at the Minnesota Department of Transportation: DULUTH, Name of District



AZIMUTH ORIENTATION AND GRID CONVERSION
Plat azimuths are oriented to the County Coordinate System with 0 degrees 0 minutes 0 seconds being "GRID NORTH". Plat distances are ground lengths.



DOC. NO. _____
OFFICE OF COUNTY RECORDER
ITASCA COUNTY, MINN
I HEREBY CERTIFY THAT THIS PLAT
HAS BEEN FILED IN THIS OFFICE
ON _____, 20__ AT _____ M
IN CAB. _____ NO. _____
COUNTY RECORDER

PLAT NO. 31-93
C.S. 3108(38=196)904

31-93
C-56

OFFICE OF THE COUNTY RECORDER
ITASCA COUNTY, MINNESOTA

Doc. No. **A 550917**

Certified filed and recorded on
01/13/2003 at 1:10 pm

Jean E. Bergston, Itasca County Recorder
by CV, Deputy

