

RIGHT OF WAY IN SECTION 25							
PARCEL	OWNER	LOCATION	TORREY'S CERTIFICATE NO.	NEW TR. R/W ACRES (MORE OR LESS)	TEMPORARY EASEMENT	BUILDING REMOVAL EASEMENT	PERMANENT R/W INTEREST
208 A	Joseph B. Navicki	NW 1/4		0.93			Fee

STATE HIGHWAY RIGHT OF WAY PLAT No. 31-12*

STATE PROJECT 3103 (2-8-38B)
 IN THE NORTH HALF OF SECTION 25, T.56 N., R.27 W. AND
 IN THE SOUTHWEST QUARTER OF SECTION 24, T.56 N., R.27 W.
 ITASCA COUNTY, MINNESOTA

* AMENDMENT TO: STATE HIGHWAY RIGHT OF WAY PLAT NO. 31-4
 STATE PROJECT 3103(2-8-38B)
 PARCEL 208A

THE COMMISSIONER OF HIGHWAYS IS HEREBY DESIGNATING THE DEFINITE LOCATION OF TRUNK HIGHWAY NO. 2 FROM 4.5 TO 5.25 MILES NORTH OF COHASSET

As shown on this plat prepared by the State of Minnesota Department of Highways, is hereby certified as the official plat of that portion of said T.H. 2 within the designated portion of Sections 24 & 25 and the Commissioner's Order therefor, pursuant to Minnesota Laws of 1969, Chapters 207, 208 and 209 (now codified as Minnesota Statutes 1969, section 161.16 subd. 2, section 160.14 subd. 1, and section 160.085 respectively).

Commissioner's Order No.	Location	Nature of Interest
57914	PLAT 31-12	Definite location, width, access, temporary easement and building removal easement.

Recommended for Certification: *R.G. Brennan* 5/23/76
 R. G. Brennan, Director of R/W Operations
 Certified: *Frank D. Morzicelli* 5/24/76
 Frank D. Morzicelli, Commissioner of Highways

I hereby certify that this plat was prepared by me or under my direct supervision and is a correct representation of said survey; that all distances are horizontal ground distances in feet; that differences between azimuths represent plane angles in degrees, minutes and seconds; that the monuments to delineate this survey have been placed in the ground as shown on the plat; and that the right-of-way boundary lines are designated on the plat.

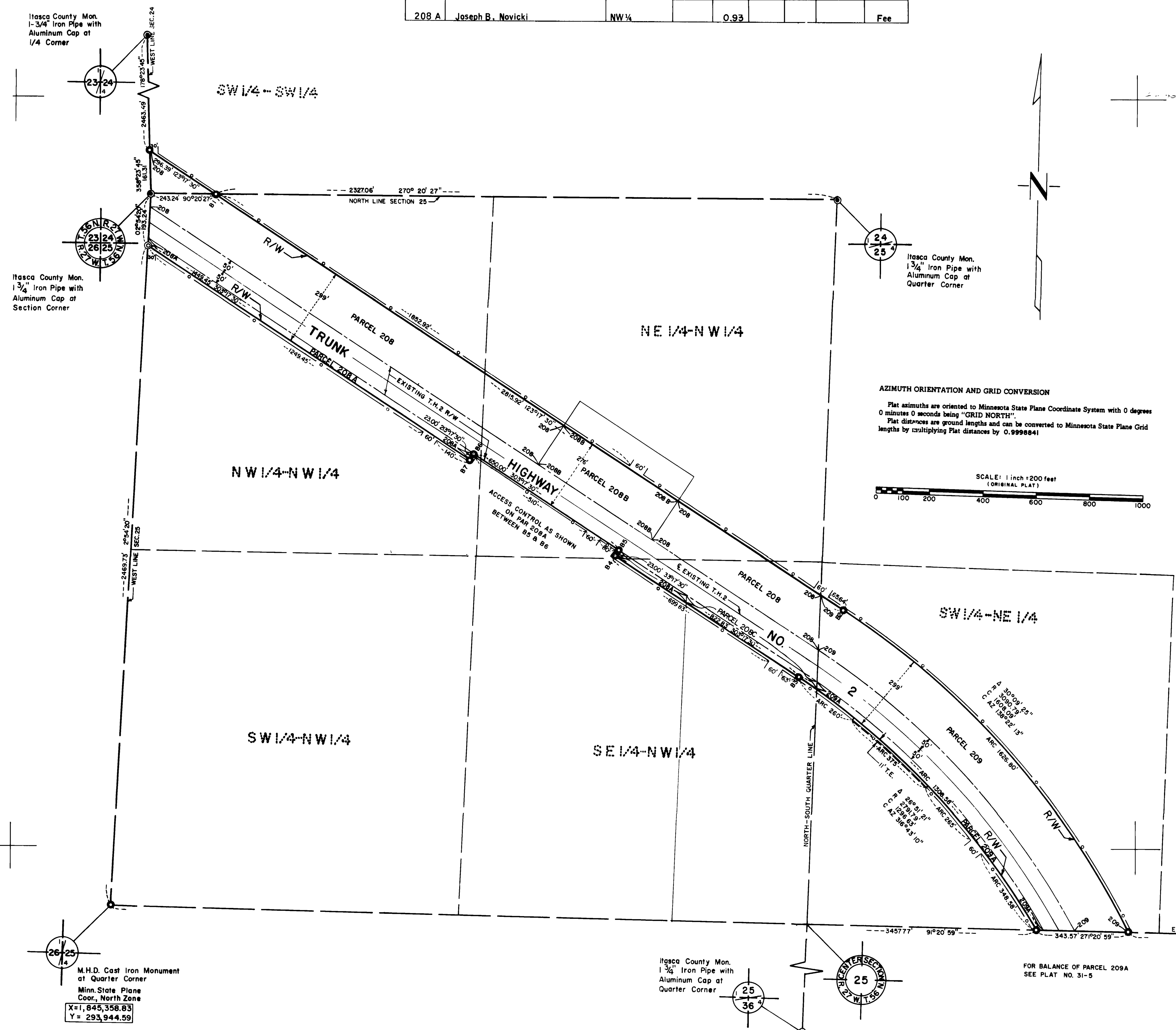
Certified by *John E. Suenen* 10460 5-24-76
 Registered Land Surveyor, Reg. No., Date

- Survey Standards**
- The plat values, azimuths and distances, are based on the project control survey system.
 - The boundary monuments shown on this plat have been field checked for location. The standard deviation for the monument positions is 0.2 ft.
 - The state plane coordinates shown on one monument are based on ties to national control monuments.
 - Certificates of Location have been filed at the Register of Deeds' Office and/or the County Surveyor's Office for the section corner monuments shown on this plat.
 - For details of this survey contact the Surveying and Mapping Section at the Minnesota Highway Department Duluth, Name of District.

CONVENTIONAL SYMBOLS

Section Line	Building Removal Easement	B.R.E.
Quarter Line	R/W Parcel Number	
Sixteenth Line	Access Control	
Property Line	Access Opening	
R/W Boundary	Cast Iron Monument or 1/2" M.H.D. Iron Pipe with Aluminum Cap	
Existing M.H.D. R/W Line	3/4" M.H.D. Iron Pin	
Other Road R/W's	Other Iron Monuments	
Railroad R/W	Concrete or Stone Monument	
Private Easement	R/W Boundary Corner	
Temporary Easement		

DISTANCES SHOWN TO FEET (66, 80 ETC.) ARE EXACT EXTRINSIC VALUES.



DOC. NO. 310507
 OFFICE OF REGISTER OF DEEDS
 ITASCA COUNTY, MINN.
 I HEREBY CERTIFY THAT THIS PLAT
 HAS BEEN FILED IN THIS OFFICE
 AT 2:35 O'CLOCK P.M. ON 5/24/76
 BOOK OF _____, PAGE _____
John E. Suenen
 REGISTER