

RIGHT OF WAY IN SECTION 25							
PARCEL	OWNER	LOCATION	TORREN'S CERTIFICATE NO.	NEW TH. R/W ACRES (MORE OR LESS)	TEMPORARY EASEMENT	BUILDING REMOVAL EASEMENT	PERMANENT R/W INTEREST
208 A	Joseph B. Nevicki	NW 1/4		1.42			Fee
208 B	Bernice Nilles Frandsen	NE 1/4 NW 1/4		2.10			Fee
208 C	Anastasia E. Nevicki	SE 1/4 NW 1/4		0.35			Fee
209	Walter Huotari	SW 1/4 NE 1/4		6.48			Fee
209 A	Delees Phillips	SW 1/4 NE 1/4		0.69	0.10	12-1-80	Fee
RIGHT OF WAY IN SECTIONS 24 & 25							
208	Christie Berbee	SW 1/4 SW 1/4 Sec. 24 NW 1/4 Sec. 25		10.05			Fee

STATE PROJECT 3103 (2-8-38B)  
 IN THE NORTH HALF OF SECTION 25, T.56 N., R.27 W. AND  
 IN THE SOUTHWEST QUARTER OF SECTION 24, T.56 N., R.27 W.  
 ITASCA COUNTY, MINNESOTA

THE COMMISSIONER OF HIGHWAYS IS HEREBY DESIGNATING THE DEFINITE  
 LOCATION OF TRUNK HIGHWAY NO. 2 FROM DEER RIVER TO COHASSET

As shown on this plat prepared by the State of Minnesota Department of Highways, is hereby certified as the official plat of that portion of said T.H. 2 within the designated portion of Sections 24 & 25 and the Commissioner's Order therefor, pursuant to Minnesota Laws of 1969, Chapters 207, 208 and 209 (now codified as Minnesota Statutes 1969, section 161.16 subd. 2, section 160.14 subd. 1, and section 160.085 respectively).

Commissioner's Order No.	Location	Nature of Interest
55950	Plats 31-1 thru 31-9	Definite location, width, access, temporary easement and building removal easement.

Recommended for Certification: *R.G. Brennan* 3/20/75  
 R. G. Brennan Date Director of R/W Operations

Certified: *Frank D. Marzittelli* 3-21-75  
 Frank D. Marzittelli Date Commissioner of Highways

I hereby certify that this plat was prepared by me or under my direct supervision and is a correct representation of said survey; that all distances are horizontal ground distances in feet; that difference between azimuths represent plane angles in degrees, minutes and seconds; that the monuments to delineate this survey have been placed in the ground as shown on the plat; and that the right-of-way boundary lines are designated on the plat.

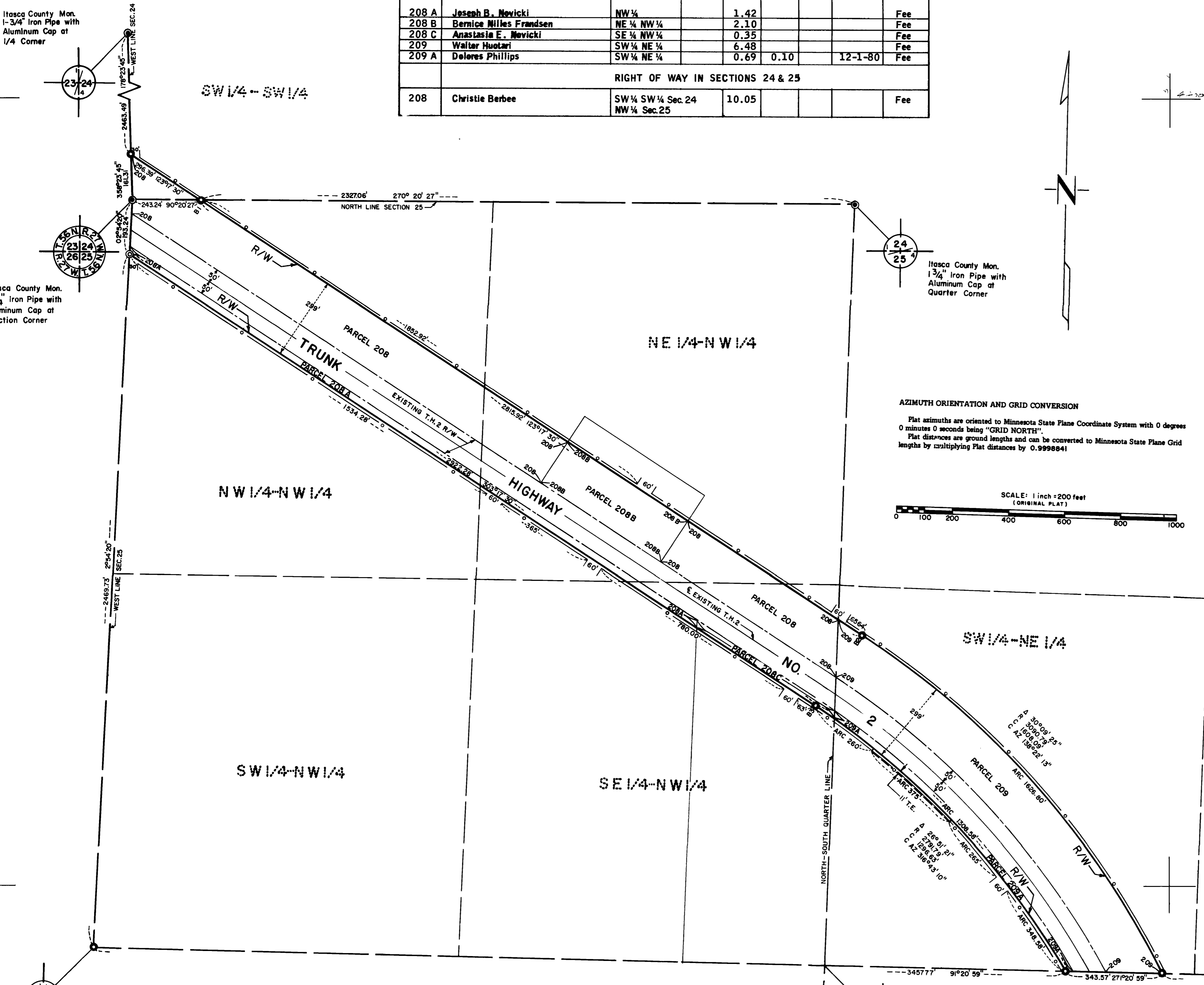
Certified by *John E. Brennan* 10460 3-20-75  
 Registered Land Surveyor Reg. No. Date

- Survey Standards**
- The plat values, azimuths and distances, are based on the project control survey system.
  - The boundary monuments shown on this plat have been field checked for location. The standard deviation for the monument positions is 0.2 ft.
  - The state plane coordinates shown on one monument are based on ties to national control monuments.
  - Certificates of Location have been filed at the Register of Deeds' Office and/or the County Surveyor's Office for the section corner monuments shown on this plat.
  - For details of this survey contact the Surveying and Mapping Section at the Minnesota Highway Department Duluth
- Name of District.

**CONVENTIONAL SYMBOLS**

Section Line	Building Removal Easement	B.R.E.
Quarter Line	R/W Parcel Number	3
Sixteenth Line	Access Control	
Property Line	Access Opening	open
R/W Boundary	Cast Iron Monument or 1/2" M.H.D. Iron Pipe with Aluminum Cap	
Existing M.H.D. R/W Line	3/4" M.H.D. Iron Pin	
Other Road R/W's	Other Iron Monuments	
Railroad R/W	Concrete or Stone Monument	
Private Easement	R/W Boundary Corner	
Temporary Easement		

DISTANCES SHOWN TO FEET (66, 80 ETC.) ARE EXACT EXTRINSIC VALUES.



**AZIMUTH ORIENTATION AND GRID CONVERSION**

Plat azimuths are oriented to Minnesota State Plane Coordinate System with 0 degrees 0 minutes 0 seconds being "GRID NORTH".  
 Plat distances are ground lengths and can be converted to Minnesota State Plane Grid lengths by multiplying Plat distances by 0.9998641.

SCALE: 1 inch = 200 feet (ORIGINAL PLAT)

Itasca County Mon. 1-3/4" Iron Pipe with Aluminum Cap at 1/4 Corner

Itasca County Mon. 1 3/4" Iron Pipe with Aluminum Cap at Section Corner

M.H.D. Cast Iron Monument at Quarter Corner  
 Minn. State Plane Coord., North Zone  
 X=1,845,358.83  
 Y= 293,944.59

Itasca County Mon. 1 3/4" Iron Pipe with Aluminum Cap at Quarter Corner

FOR BALANCE OF PARCEL 209A SEE PLAT NO. 31-5

DOC. NO.  
 OFFICE OF REGISTER OF DEEDS  
 ITASCA COUNTY, MINN.  
 I HEREBY CERTIFY THAT THIS PLAT HAS BEEN FILED IN THIS OFFICE AT \_\_\_\_\_ O'CLOCK \_\_\_\_\_ M. ON \_\_\_\_\_ OF \_\_\_\_\_, 19\_\_\_\_ IN BOOK \_\_\_\_\_ OF \_\_\_\_\_, PAGE \_\_\_\_\_