

STATE HIGHWAY RIGHT OF WAY PLAT No. 31-3

STATE PROJECT 3103 (2-8-38B)

IN SECTION 23, T. 56 N., R. 27 W. AND
IN THE NORTHEAST QUARTER OF SECTION 26, T. 56 N., R. 27 W.
ITASCA COUNTY, MINNESOTA

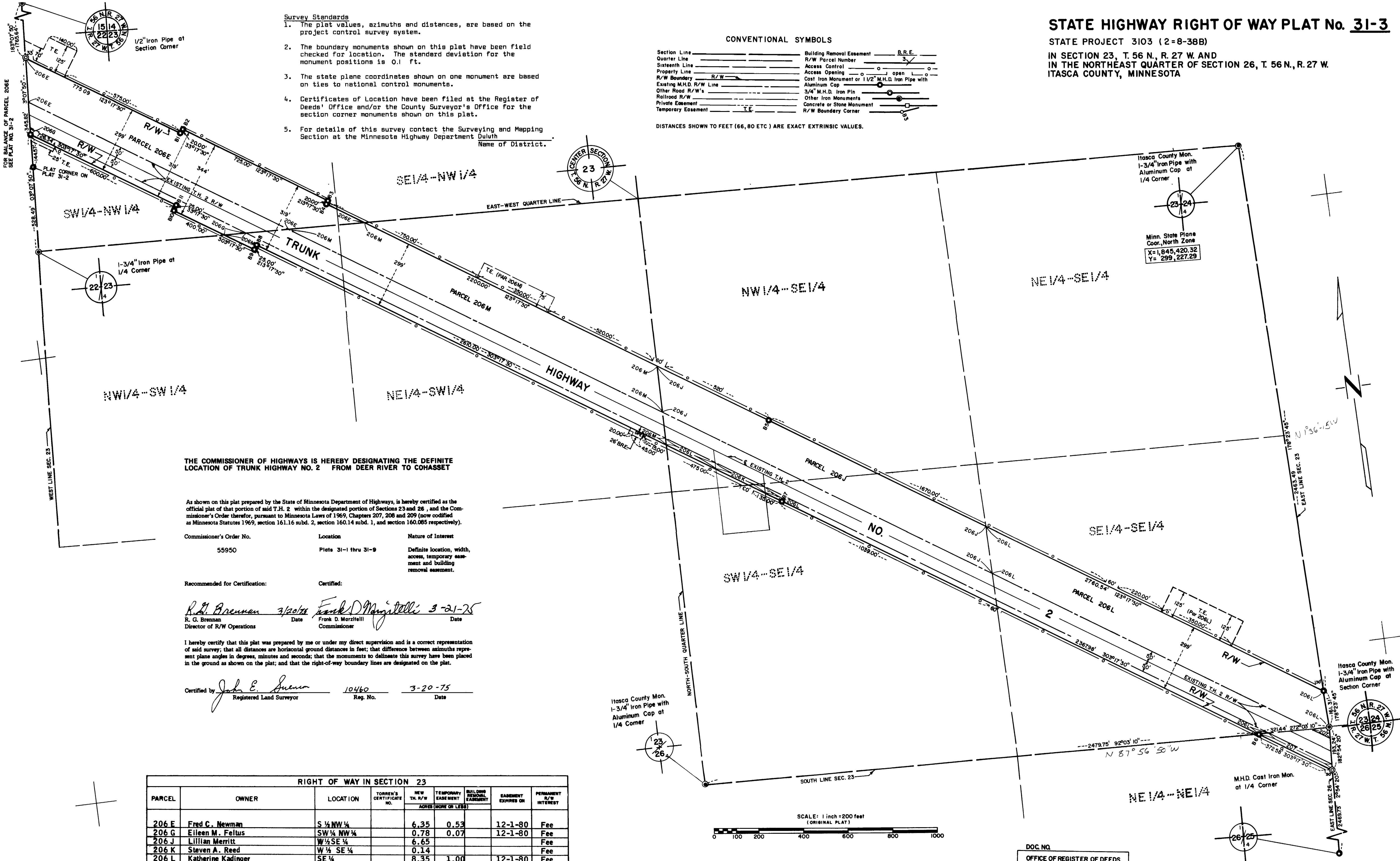
Survey Standards

1. The plat values, azimuths and distances, are based on the project control survey system.
2. The boundary monuments shown on this plat have been field checked for location. The standard deviation for the monument positions is 0.1 ft.
3. The state plane coordinates shown on one monument are based on ties to national control monuments.
4. Certificates of Location have been filed at the Register of Deeds' Office and/or the County Surveyor's Office for the section corner monuments shown on this plat.
5. For details of this survey contact the Surveying and Mapping Section at the Minnesota Highway Department Duluth

CONVENTIONAL SYMBOLS

Section Line	Building Removal Easement	B.R.E.
Quarter Line	R/W Parcel Number	
Statehood Line	Access Control	
Property Line	Access Opening	
R/W Boundary	Cast Iron Monument or 1 1/2" M.H.D. Iron Pipe with Aluminum Cap	
Existing M.H.D. R/W Line	3/4" M.H.D. Iron Pin	
Other Road R/W's	Other Iron Monuments	
Railroad R/W	Concrete or Stone Monument	
Private Easement	R/W Boundary Corner	
Temporary Easement		

DISTANCES SHOWN TO FEET (66,80 ETC) ARE EXACT EXTRINSIC VALUES.



THE COMMISSIONER OF HIGHWAYS IS HEREBY DESIGNATING THE DEFINITE LOCATION OF TRUNK HIGHWAY NO. 2 FROM DEER RIVER TO CHASSET

As shown on this plat prepared by the State of Minnesota Department of Highways, is hereby certified as the official plat of that portion of said T.H. 2 within the designated portion of Sections 23 and 26, and the Commissioner's Order therefor, pursuant to Minnesota Laws of 1969, Chapters 207, 208 and 209 (now codified as Minnesota Statutes 1969, section 161.16 subd. 2, section 160.14 subd. 1, and section 160.085 respectively).

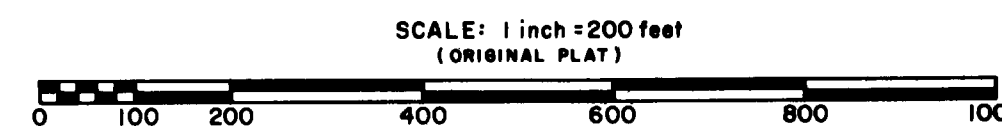
Commissioner's Order No.	Location	Nature of Interest
55950	Plats 31-1 thru 31-9	Definite location, width, access, temporary easement and building removal easement.

Recommended for Certification: *R.G. Brennan* 7/20/75
 Certified: *Frank D. Morzheill* 3-21-75
 R. G. Brennan Date Director of R/W Operations
 Frank D. Morzheill Date Commissioner

I hereby certify that this plat was prepared by me or under my direct supervision and is a correct representation of said survey; that all distances are horizontal ground distances in feet; that difference between azimuths represent plane angles in degrees, minutes and seconds; that the monuments to delineate this survey have been placed in the ground as shown on the plat; and that the right-of-way boundary lines are designated on the plat.

Certified by *John E. Jensen* 10460 3-20-75
 Registered Land Surveyor Reg. No. Date

RIGHT OF WAY IN SECTION 23							
PARCEL	OWNER	LOCATION	TORREN'S CERTIFICATE NO.	NEW EX. R/W ASSES (MORE OR LESS)	TEMPORARY EASEMENT EXPIRES ON	BUILDING REMOVAL EASEMENT EXPIRES ON	PERMANENT R/W INTEREST
206 E	Fred C. Newman	S 1/4 NW 1/4		6.35	0.52		12-1-80 Fee
206 G	Eileen M. Falus	SW 1/4 NW 1/4		0.78	0.07		12-1-80 Fee
206 J	Lillian Merritt	W 1/2 SE 1/4		6.65			Fee
206 K	Steven A. Reed	W 1/2 SE 1/4		0.14			Fee
206 L	Katherine Kadinger	SE 1/4		8.35	1.00		12-1-80 Fee
206 M	L. O. Dexter	N 1/2 SW 1/4		7.95	0.60	0.04	12-1-80 Fee
RIGHT OF WAY IN SECTION 26							
207	Virginia S. Otto	NE 1/4 NE 1/4		0.25			Fee



AZIMUTH ORIENTATION AND GRID CONVERSION

Plat azimuths are oriented to Minnesota State Plane Coordinate System with 0 degrees 0 minutes 0 seconds being "GRID NORTH".
 Plat distances are ground lengths and can be converted to Minnesota State Plane Grid lengths by multiplying Plat distances by 0.9998841

DOC. NO.
 OFFICE OF REGISTER OF DEEDS
 —ITASCA— COUNTY, MINN.
 I HEREBY CERTIFY THAT THIS PLAT HAS BEEN FILED IN THIS OFFICE AT ___ O'CLOCK ___ M. ON ___ IN ___ OF ___ IN BOOK ___ OF ___ PAGE ___