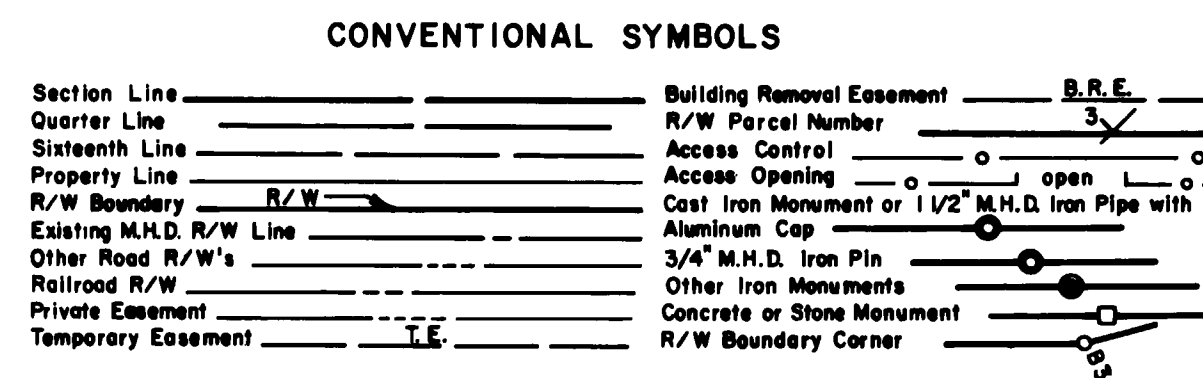


**MINNESOTA DEPARTMENT OF TRANSPORTATION**  
**RIGHT OF WAY PLAT No. 31-14**  
 STATE PROJECT NO. 3106 (6+34) 901

IN THE WEST HALF OF SECTION 6, T. 55 N., R. 26 W. &  
 IN THE EAST HALF OF SECTION 1, T. 55 N., R. 27 W.  
 ITASCA COUNTY, MINNESOTA

THE COMMISSIONER OF TRANSPORTATION IS HEREBY DESIGNATING THE DEFINITE LOCATION OF TRUNK HIGHWAY NO. 6 FROM INPLACE TRUNK HIGHWAY NO. 6, 3.5 MILES WEST OF COHASSET, TO TRUNK HIGHWAY NO. 2, 4.0 MILES NORTHWEST OF COHASSET

RIGHT OF WAY IN SECTION 6							
PARCEL	OWNER	LOCATION	TORREN'S CERTIFICATE NO.	NEW TR. R/W ACRES (MORE OR LESS)	TEMPORARY EASEMENT	BUILDING REMOVAL EASEMENT	PERMANENT R/W INTEREST
5	Minnesota Power & Light Co.	Gov't Lots 4 thru 7		23.79	2.65		Fee
RIGHT OF WAY IN SECTION 1							
6	Melvin S. Mallum	Gov't Lot 1 SE 1/4 SE 1/4 NE 1/4 SE 1/4 SE 1/4 NE 1/4		0.20	0.92		Fee



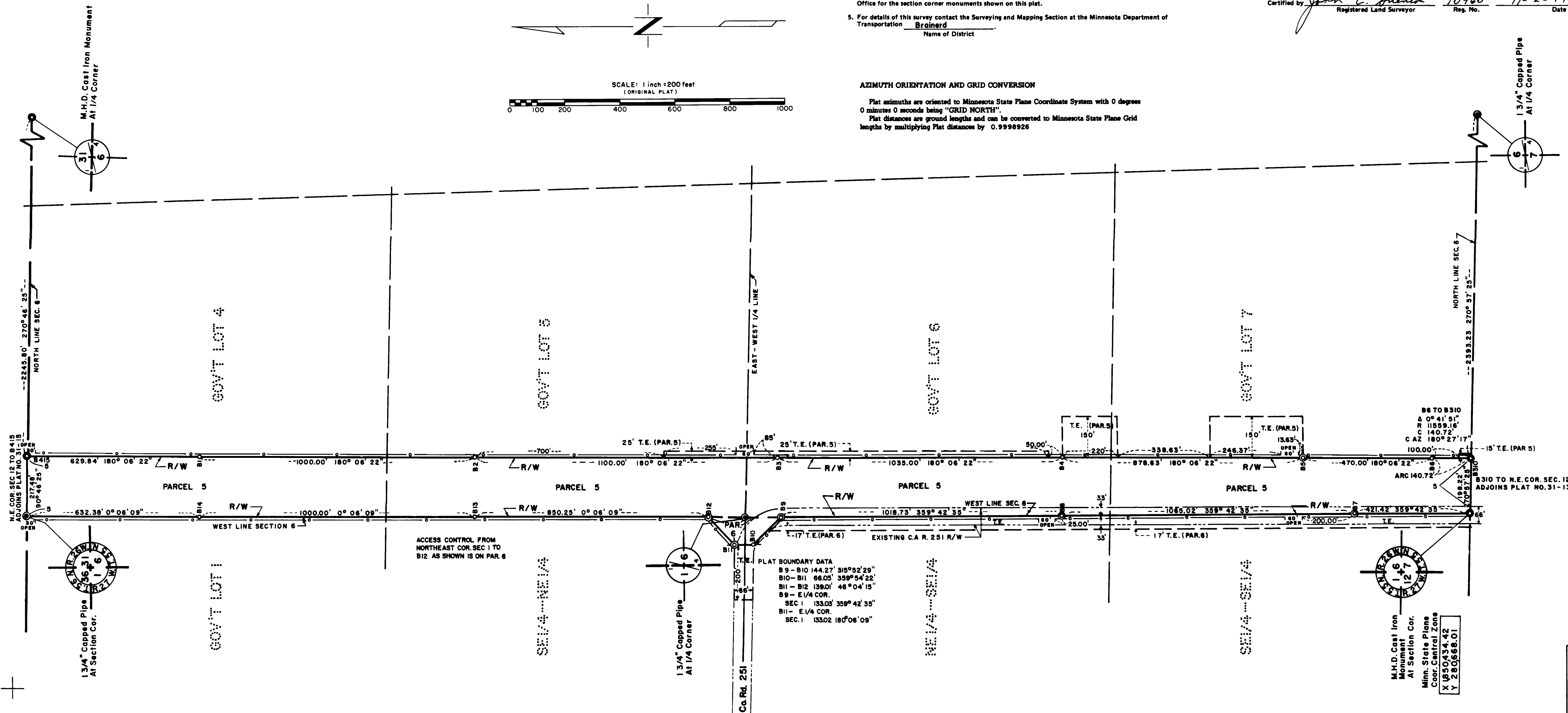
DISTANCES SHOWN TO FEET (66, 80 ETC.) ARE EXACT EXTRINSIC VALUES.

**SURVEY STANDARDS**

- The plat values, azimuths and distances, are based on the project control survey system.
- The boundary monuments shown on this plat have been field checked for location. The standard deviation for the monument positions is 0.1 ft.
- The state plane coordinates shown on one monument are based on ties to national control monuments.
- Certificates of Location have been filed at the County Recorder's Office and/or the County Surveyor's Office for the section corner monuments shown on this plat.
- For details of this survey contact the Surveying and Mapping Section at the Minnesota Department of Transportation  
 Brianard  
 Name of District

**AZIMUTH ORIENTATION AND GRID CONVERSION**

Plat azimuths are oriented to Minnesota State Plane Coordinate System with 0 degrees 0 minutes 0 seconds being "GRID NORTH".  
 Plat distances are ground lengths and can be converted to Minnesota State Plane Grid lengths by multiplying Plat distances by 0.9998926



As shown on this plat prepared by the State of Minnesota Department of Transportation is hereby certified as the official plat of that portion of said T.H. 6 within the designated portion of Sections 1 and 6, and the Commissioner's Order therefor, pursuant to Minnesota Statutes 1989, section 161.16 subd. 2, section 160.14 subd. 1, and section 160.085 and Minnesota Laws of 1976, Chapter 166.

Commissioner's Order No. 60155 Location: Plate 31-13 thru 31-15 Nature of Interest: Definite location, width, access, temporary easement and building removal easement.

Recommended for Certification: R. G. Brennan, Director of R/W Operations Date: 11-22-77  
 Certified: Jim Harrington, Commissioner of Transportation Date: 11/23/77

Certified by: John E. Brennan, Registered Land Surveyor, Reg. No. 10460, Date: 11-22-77

PLAT BOUNDARY DATA  
 B9 - B10 144.27' 315°52'29"  
 B10 - B11 66.03' 359°54'22"  
 B11 - B12 138.01' 46°04'15"  
 B9 - E1/4 COR. 133.03' 359°42'35"  
 B11 - E1/4 COR. 133.02' 180°06'09"

DOC. NO. 321371  
 OFFICE OF COUNTY RECORDER  
 ITASCA COUNTY, MINN.  
 I HEREBY CERTIFY THAT THIS PLAT HAS BEEN FILED IN THIS OFFICE AT 2:00 O'CLOCK P.M. ON December 1st, 1977  
 BOOK OF PAGE  
 COUNTY RECORDER