

STATE PROJECT 3103 (2-8-38A) & (2-8-38B)

IN THE SOUTH HALF OF SECTION 16, T.56 N., R. 27 W., 4th P.M.,
IN THE NORTH HALF OF SECTION 21, T.56 N., R. 27 W., 4th P.M., AND
IN THE EAST HALF OF SECTION 36, T. 145 N., R. 25 W., 5th P.M.
ITASCA COUNTY, MINNESOTA

THE COMMISSIONER OF HIGHWAYS IS HEREBY DESIGNATING THE DEFINITE LOCATION OF TRUNK HIGHWAY NO. 2 FROM DEER RIVER TO COHASSET

As shown on this plat prepared by the State of Minnesota Department of Highways, is hereby certified as the official plat of that portion of said T.H. 2 within the designated portion of Sections 16, 21 and 36 and the Commissioner's Order therefor, pursuant to Minnesota Laws of 1969, Chapters 207, 208 and 209 (now codified as Minnesota Statutes 1969, section 161.16 subd. 2, section 160.14 subd. 1, and section 160.085 respectively).

Commissioner's Order No.	Location	Nature of Interest
55950	Plats 31-1 thru 31-9	Definite location, width, access, temporary easement and building removal easement.

Recommended for Certification: _____ Certified: _____
 R. G. Brennan 3/20/75 Date Frank D. Marzittelli 3-21-75 Date
 Director of R/W Operations Commissioner of Highways

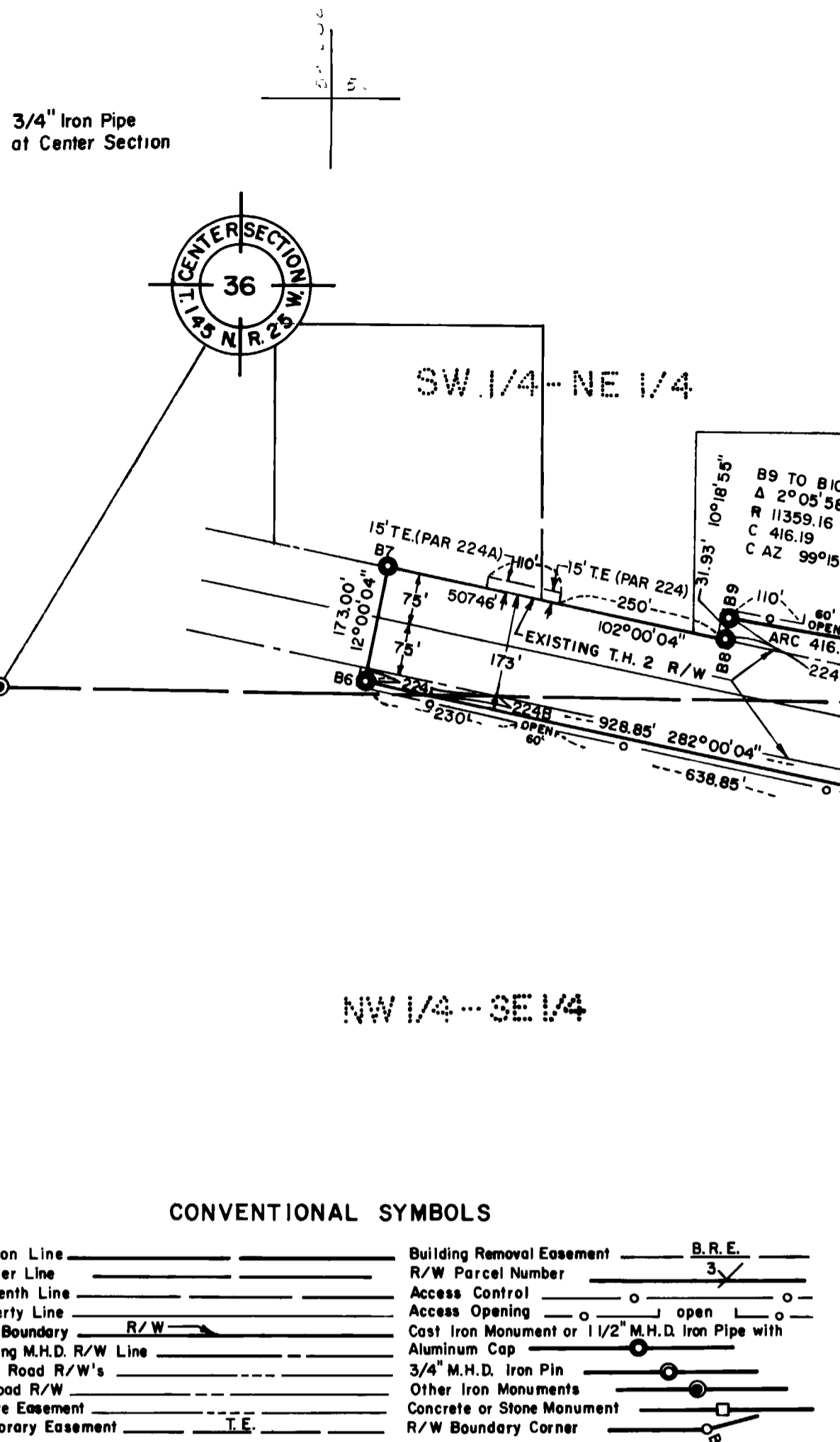
I hereby certify that this plat was prepared by me or under my direct supervision and is a correct representation of said survey; that all distances are horizontal ground distances in feet; that difference between azimuths represent plane angles in degrees, minutes and seconds; that the monuments to delineate this survey have been placed in the ground as shown on the plat; and that the right-of-way boundary lines are designated on the plat.

Certified by John E. Swenson 10460 3-20-75
 Registered Land Surveyor Reg. No. Date

- Survey Standards**
- The plat values, azimuths and distances, are based on the project control survey system.
 - The boundary monuments shown on this plat have been field checked for location. The standard deviation for the monument positions is 0.3 ft.
 - The state plane coordinates shown on one monument are based on ties to national control monuments.
 - Certificates of Location have been filed at the Register of Deeds' Office and/or the County Surveyor's Office for the section corner monuments shown on this plat.
 - For details of this survey contact the Surveying and Mapping Section at the Minnesota Highway Department Duluth Name of District.

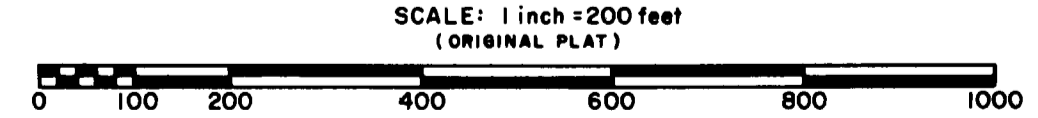
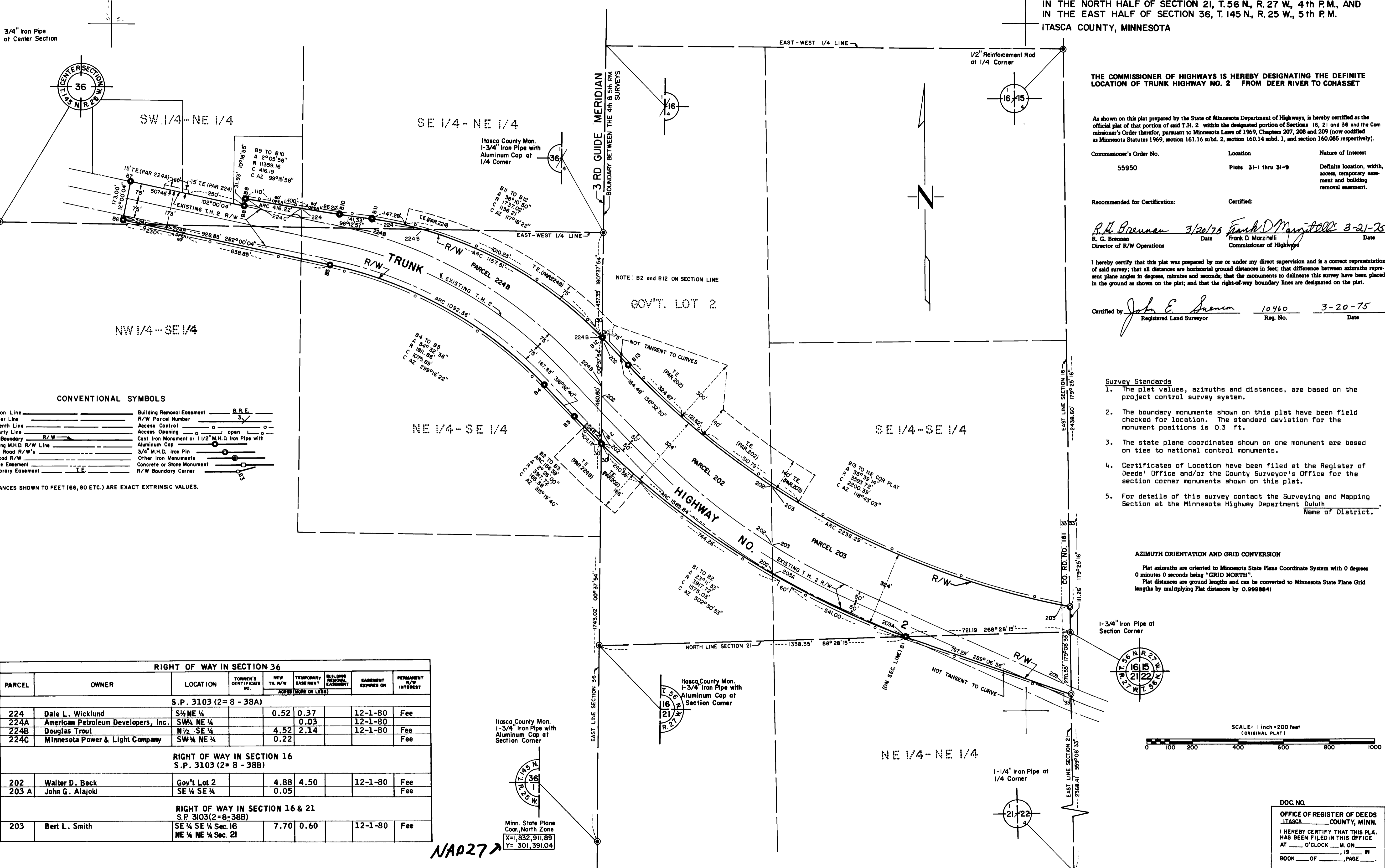
AZIMUTH ORIENTATION AND GRID CONVERSION

Plat azimuths are oriented to Minnesota State Plane Coordinate System with 0 degrees 0 minutes 0 seconds being "GRID NORTH".
 Plat distances are ground lengths and can be converted to Minnesota State Plane Grid lengths by multiplying Plat distances by 0.9998841



RIGHT OF WAY IN SECTION 36							
PARCEL	OWNER	LOCATION	TORREN'S CERTIFICATE NO.	NEW T.H. R/W ACRES (MORE OR LESS)	TEMPORARY EASEMENT	BUILDING REMOVAL EASEMENT	EASEMENT EXPIRES ON
S.P. 3103 (2-8-38A)							
224	Dale L. Wicklund	S 1/4 NE 1/4		0.52	0.37		12-1-80 Fee
224A	American Petroleum Developers, Inc.	SW 1/4 NE 1/4		0.03	0.03		12-1-80
224B	Douglas Trout	N 1/2 SE 1/4		4.52	2.14		12-1-80 Fee
224C	Minnesota Power & Light Company	SW 1/4 NE 1/4		0.22			Fee
RIGHT OF WAY IN SECTION 16							
S.P. 3103 (2-8-38B)							
202	Walter D. Beck	Gov't Lot 2		4.88	4.50		12-1-80 Fee
203 A	John G. Alajoki	SE 1/4 SE 1/4		0.05			Fee
RIGHT OF WAY IN SECTION 16 & 21							
S.P. 3103 (2-8-38B)							
203	Bert L. Smith	SE 1/4 SE 1/4 Sec. 16 NE 1/4 NE 1/4 Sec. 21		7.70	0.60		12-1-80 Fee

NAD27
 Minn. State Plane
 Coord. North Zone
 X=1,832,911.89
 Y=301,391.04



DOC. NO. _____
 OFFICE OF REGISTER OF DEEDS
 ITASCA COUNTY, MINN.
 I HEREBY CERTIFY THAT THIS PLAT HAS BEEN FILED IN THIS OFFICE AT _____ O'CLOCK _____ M. ON _____, 19____ IN BOOK _____ OF _____, PAGE _____