

Survey Standards

1. The plat values, azimuths and distances, are based on the project control survey system.
2. The boundary monuments shown on this plat have been field checked for location. The standard deviation for the monument positions is 0.2 ft.
3. The state plane coordinates shown on one monument are based on ties to national control monuments.
4. Certificates of Location have been filed at the Register of Deeds' Office and/or the County Surveyor's Office for the section corner monuments shown on this plat.
5. For details of this survey contact the Surveying and Mapping Section at the Minnesota Highway Department Duluth Name of District.

THE COMMISSIONER OF HIGHWAYS IS HEREBY DESIGNATING THE DEFINITE LOCATION OF TRUNK HIGHWAY NO. 2 FROM DEER RIVER TO COHASSET

As shown on this plat prepared by the State of Minnesota Department of Highways, is hereby certified as the official plat of that portion of said T.H. 2 within the designated portion of Sections 15 and 22, and the Commissioner's Order therefor, pursuant to Minnesota Laws of 1969, Chapters 207, 208 and 209 (now codified as Minnesota Statutes 1969, section 161.16 subd. 2, section 160.14 subd. 1, and section 160.085 respectively).

Commissioner's Order No.	Location	Nature of Interest
55950	Plats 31-1 thru 31-9	Definite location, width, access, temporary easement and building removal easement.

Recommended for Certification: *R.G. Brennan* 3/20/75 Date *Frank D. Morzittelli* 3-21-75 Date
 R. G. Brennan Director of R/W Operations Frank D. Morzittelli Commissioner of Highways

I hereby certify that this plat was prepared by me or under my direct supervision and is a correct representation of said survey; that all distances are horizontal ground distances in feet; that differences between azimuths represent plane angles in degrees, minutes and seconds; that the monuments to delineate this survey have been placed in the ground as shown on the plat; and that the right-of-way boundary lines are designated on the plat.

Certified by *John E. Swann* 10460 3-20-75
 Registered Land Surveyor Reg. No. Date

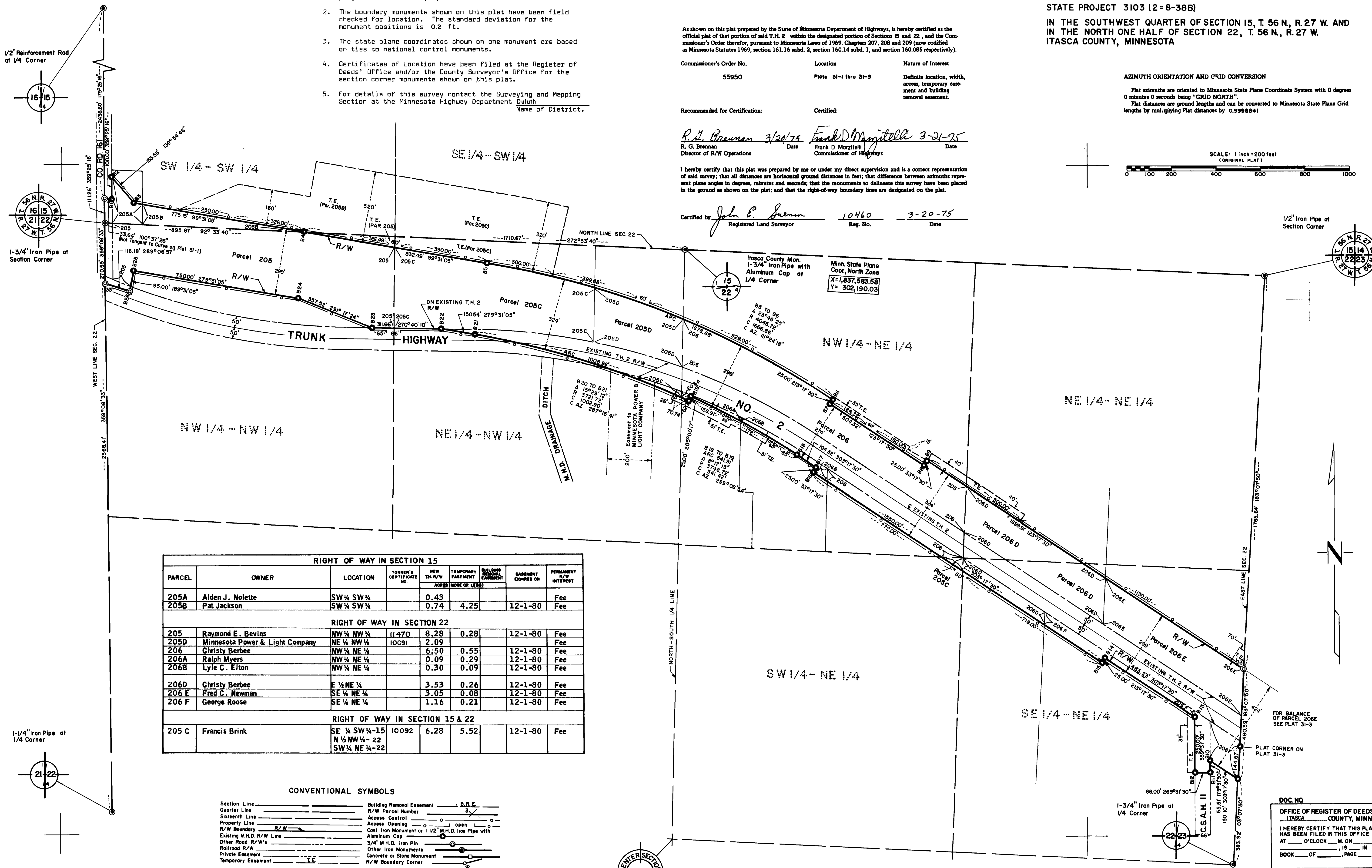
STATE HIGHWAY RIGHT OF WAY PLAT No. 31-2

STATE PROJECT 3103 (2-8-38B)

IN THE SOUTHWEST QUARTER OF SECTION 15, T. 56 N., R. 27 W. AND IN THE NORTH ONE HALF OF SECTION 22, T. 56 N., R. 27 W. ITASCA COUNTY, MINNESOTA

AZIMUTH ORIENTATION AND GRID CONVERSION

Plat azimuths are oriented to Minnesota State Plane Coordinate System with 0 degrees 0 minutes 0 seconds being "GRID NORTH". Plat distances are ground lengths and can be converted to Minnesota State Plane Grid lengths by multiplying Plat distances by 0.9998841



RIGHT OF WAY IN SECTION 15							
PARCEL	OWNER	LOCATION	TORRENS'S CERTIFICATE NO.	NEW T.H. R/W	TEMPORARY EASEMENT	BUILDING REMOVAL EASEMENT	PERMANENT R/W INTEREST
205A	Alden J. Nolette	SW 1/4 SW 1/4		0.43			Fee
205B	Pat Jackson	SW 1/4 SW 1/4		0.74	4.25		Fee
RIGHT OF WAY IN SECTION 22							
205	Raymond E. Bevins	NW 1/4 NW 1/4	11470	8.28	0.28		12-1-80 Fee
205D	Minnesota Power & Light Company	NE 1/4 NW 1/4	10091	2.09			Fee
206	Christy Berbee	NW 1/4 NE 1/4		6.50	0.55		12-1-80 Fee
206A	Ralph Myers	NW 1/4 NE 1/4		0.09	0.29		12-1-80 Fee
206B	Lyle C. Elton	NW 1/4 NE 1/4		0.30	0.09		12-1-80 Fee
206D	Christy Berbee	E 1/4 NE 1/4		3.53	0.26		12-1-80 Fee
206 E	Fred C. Newman	SE 1/4 NE 1/4		3.05	0.08		12-1-80 Fee
206 F	George Roose	SE 1/4 NE 1/4		1.16	0.21		12-1-80 Fee
RIGHT OF WAY IN SECTION 15 & 22							
205 C	Francis Brink	SE 1/4 SW 1/4-15 N 1/4 NW 1/4-22 SW 1/4 NE 1/4-22	10092	6.28	5.52		12-1-80 Fee

CONVENTIONAL SYMBOLS

Section Line	Building Removal Easement	B.R.E.
Quarter Line	R/W Parcel Number	3
Sixteenth Line	Access Control	3
Property Line	Access Opening	o
R/W Boundary	Cast Iron Monument or 1/2" M.H.D. Iron Pipe with Aluminum Cap	o
Existing M.H.D. R/W Line	3/4" M.H.D. Iron Pin	o
Other Road R/W's	Other Iron Monuments	o
Railroad R/W's	Concrete or Stone Monument	o
Private Easement	R/W Boundary Corner	o
Temporary Easement		

DISTANCES SHOWN TO FEET (66, 80 ETC.) ARE EXACT EXTRINSIC VALUES.

DOC NO. _____
 OFFICE OF REGISTER OF DEEDS
 ITASCA COUNTY, MINN.
 I HEREBY CERTIFY THAT THIS PLAT HAS BEEN FILED IN THIS OFFICE AT _____ O'CLOCK _____ M. ON _____ DAY OF _____ 19____ IN BOOK _____ OF _____ PAGE _____